

CERTIFICATE OF LOCATION OF GOVERNMENT CORNER

County of Anoka

State of Minnesota

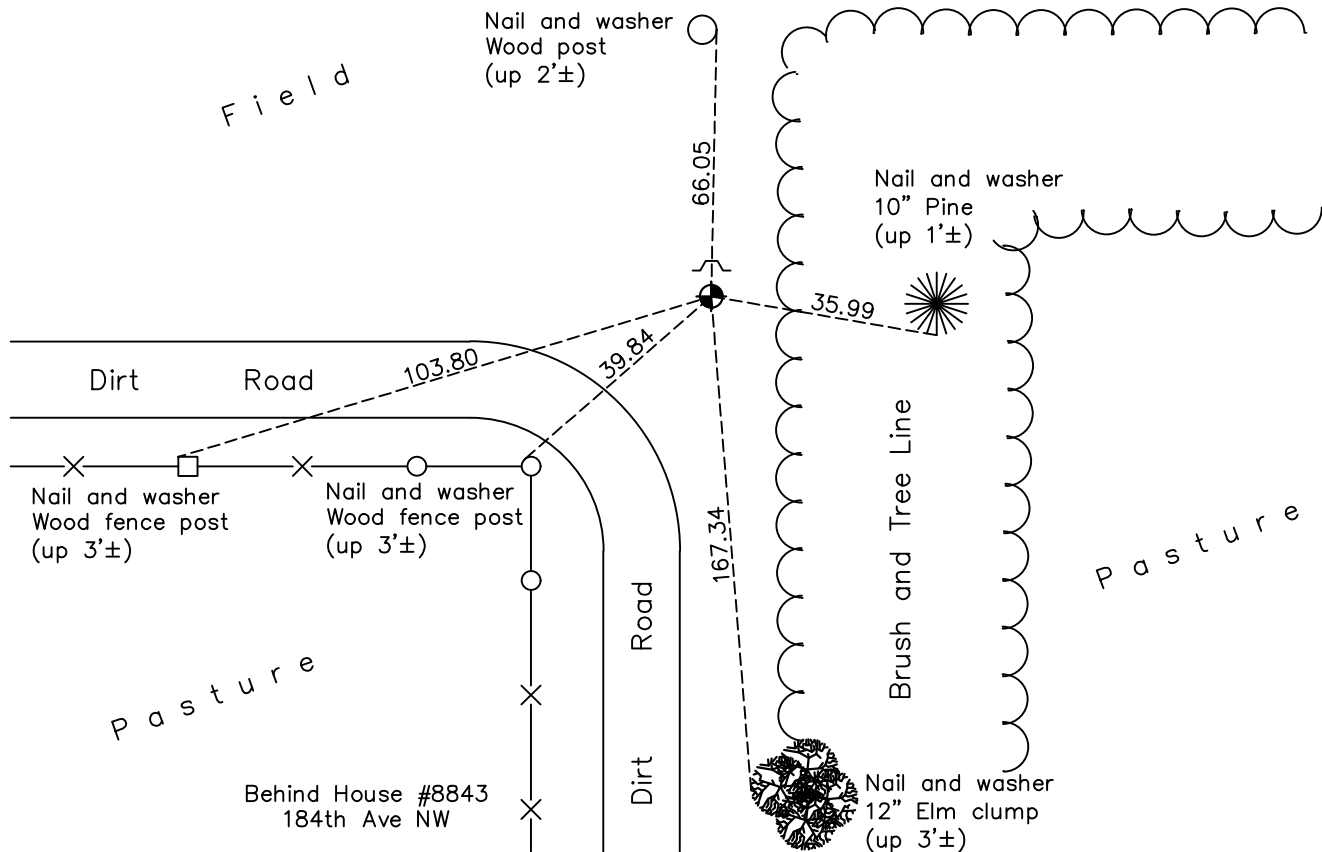
East 1/4 Corner of Sec. 31 Township 33 Range 25

On the 3rd day of July, 1975, the described corner was evidenced by area resurvey

and to perpetuate the location of said corner, at the exact location thereof, a permanent marker was placed consisting of a cast iron monument with a sign and post on the north side

AND on the 9th day of March, 2018, said permanent marker was found down 0.2'± and the ties were updated

Updated reference ties are as shown below.



Revision Date

4/24/18

N.A.D. 1983 Coordinates
(1996 Adjustment)

County Project Coordinates	
Northing	<u>198997.7747</u>
Easting	<u>442485.2465</u>
Date	<u>2/19/03</u>

I hereby certify that this United States public land survey monument record is correct and complete to the best of my knowledge and belief.

David M Zieglmeier Date 6/11/21

David M. Zieglmeier, Anoka County Surveyor

Minnesota License Number 46179

HISTORY OF GOVERNMENT CORNER

Page No. 112

County of Anoka

State of Minnesota

East 1/4 Corner of Sec. 31 Township 33 Range 25

CORNER HISTORY:

May 1855 - This corner was established by James M. Marsh, Deputy Surveyor. Marsh marked the position by "set quarter section post" with two bearing trees marked as accessories.

July 3, 1975 - Set cast iron monument using area resurvey. Established ties to monument. Set sign and post on north side.

August 2, 1976 - Found cast iron monument and updated ties.

July 16, 1979 - Found cast iron monument and updated ties.

August 10, 1982 - Found cast iron monument and updated ties.

July 15, 1985 - Found cast iron monument and updated ties.

August 31, 1988 - Found cast iron monument and updated ties.

June 29, 1994 - Found cast iron monument and updated ties.

February 19, 2003 - Established NAD 1983 (1996 adj.) Anoka County project coordinates by static GPS methods.

November 7, 2013 - Found cast iron monument down 0.2'±. Verified position by VRS GPS methods. Updated ties.

March 9, 2018 - Found cast iron monument down 0.2'±. Verified position by VRS GPS methods. Updated ties.