

CERTIFICATE OF LOCATION OF GOVERNMENT CORNER

County of Anoka

State of Minnesota

Witness Corner of Sec. 32 Township 33 Range 25

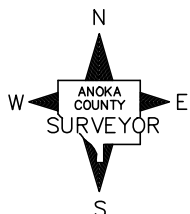
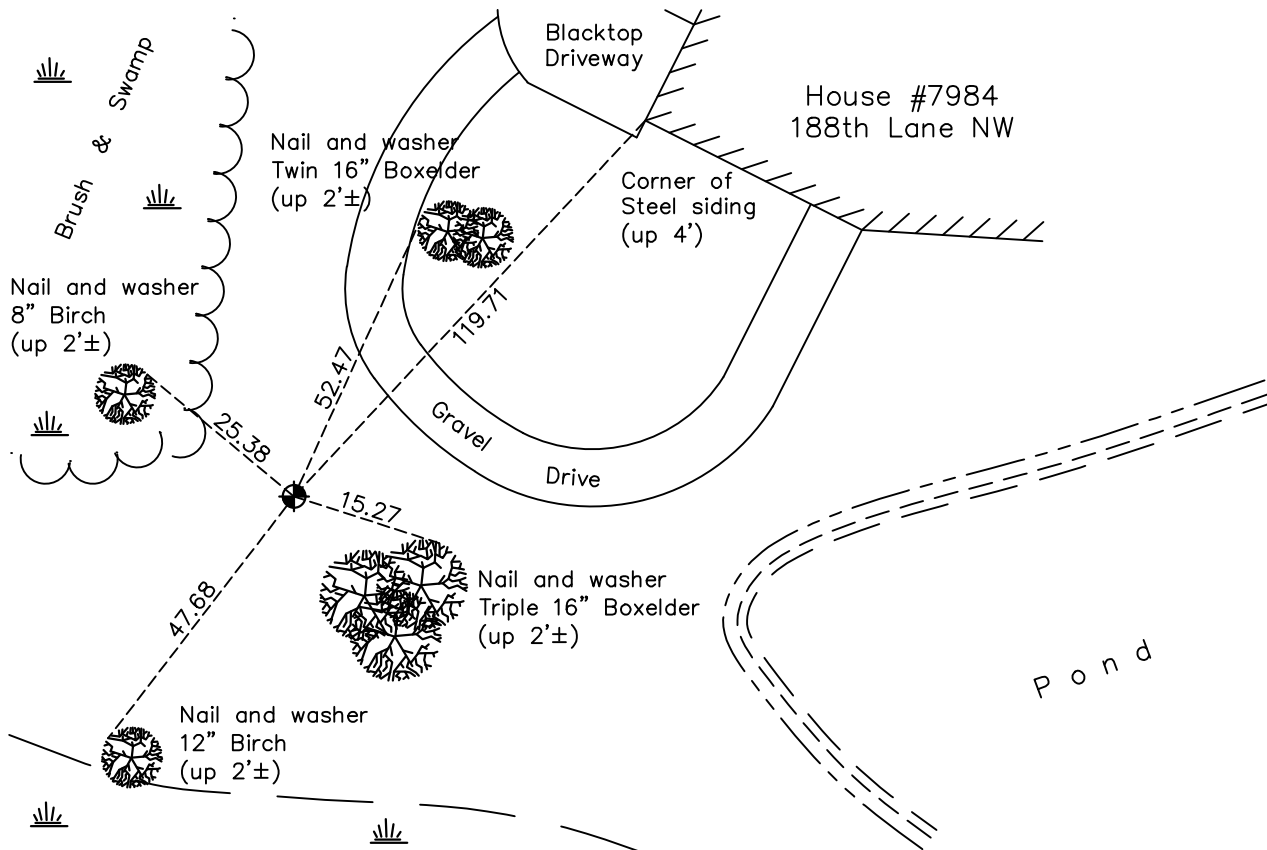
(On east line of NE 1/4)

On the 29th day of August, 1988, the described corner was evidenced by area resurvey

and to perpetuate the location of said corner, at the exact location thereof, a permanent marker was placed consisting of a cast iron monument

AND on the 27th day of March, 2018, said permanent marker was found and the ties were updated

Updated reference ties are as shown below.



Revision Date

4/24/18

N.A.D. 1983 Coordinates
(1996 Adjustment)

County Project Coordinates

Northing 200712.4233

Easting 447704.7917

Date 2/25/03

I hereby certify that this United States public land survey monument record is correct and complete to the best of my knowledge and belief.

David M Zieglmeier Date 6/11/21

David M. Zieglmeier, Anoka County Surveyor

Minnesota License Number 46179

HISTORY OF GOVERNMENT CORNER

Page No. 113

County of Anoka

State of Minnesota

Witness Corner of Sec. 32 Township 33 Range 25
(On east line of NE 1/4)

CORNER HISTORY:

August 29, 1988 - Set cast iron monument flush using area resurvey. Established ties to monument. Set sign and post on the north side.

July 20, 1994 - Found cast iron monument and updated ties.

February 25, 2003 - Found cast iron monument and updated ties. Established NAD 1983 (1996 adj.) Anoka County project coordinates by static GPS methods.

November 4, 2013 - Found cast iron monument broken w/sign and post missing. Checked position of center fin by VRS GPS methods and corner ties. Replaced with a new cast iron monument using static GPS methods. Verified position by VRS GPS methods. Updated ties.

March 27, 2018 - Found cast iron monument. Verified position by VRS GPS methods. Updated ties.