

# CERTIFICATE OF LOCATION OF GOVERNMENT CORNER

County of Anoka

State of Minnesota

## Witness Corner of Sec. 32 Township 33 Range 25

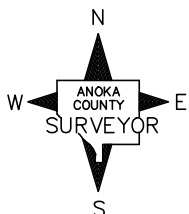
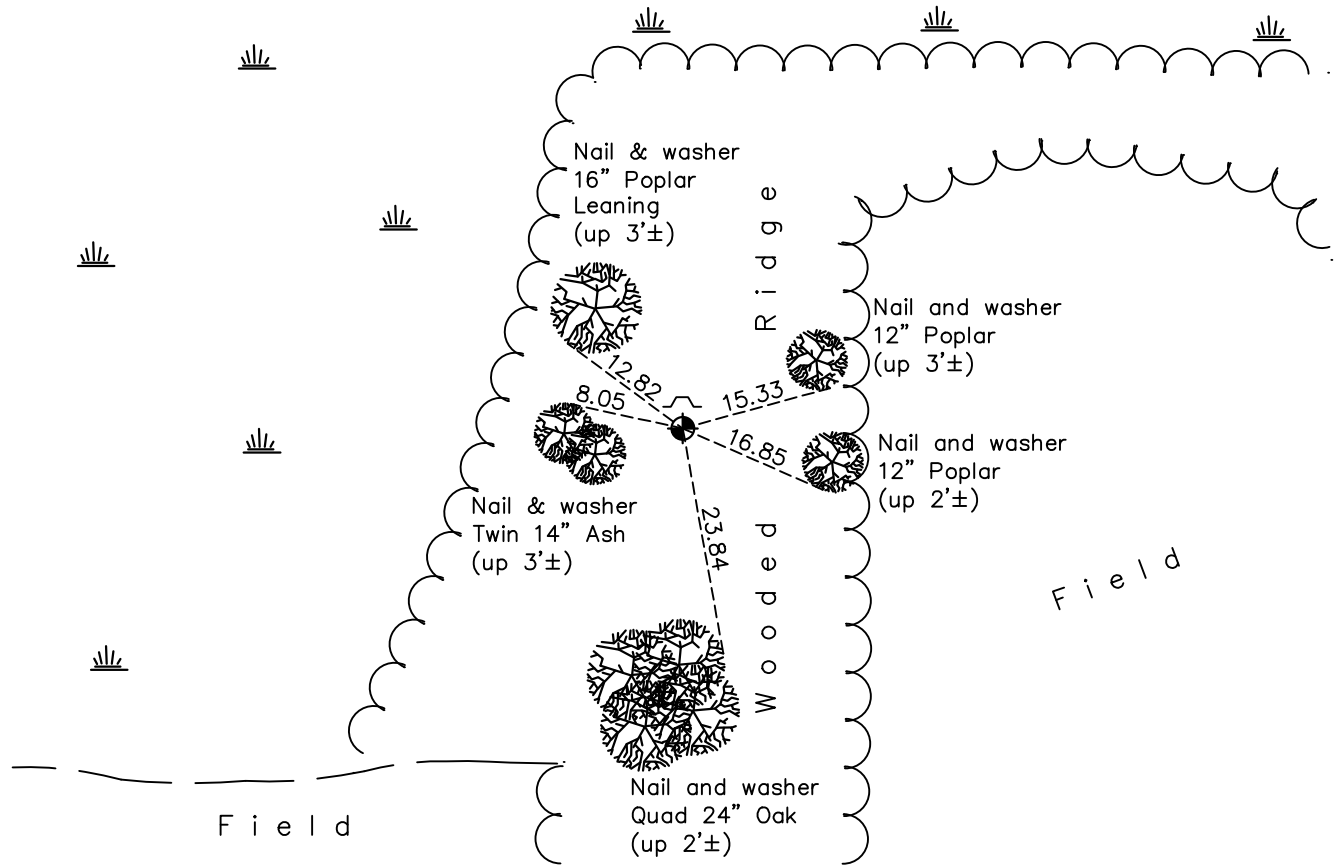
(On east line of SE 1/4)

On the 26th day of August, 1988, the described corner was evidenced by area resurvey

and to perpetuate the location of said corner, at the exact location thereof, a permanent marker was placed consisting of a cast iron monument with a sign and post on the north side

AND on the      day of March, 2018, said permanent marker was found flush and the ties were updated

Updated reference ties are as shown below.



Revision Date

4/24/18

N.A.D. 1983 Coordinates  
(1996 Adjustment)

County Project Coordinates	
Northing	<u>197837.1491</u>
Easting	<u>447721.4521</u>
Date	<u>2/26/03</u>

I hereby certify that this United States public land survey monument record is correct and complete to the best of my knowledge and belief.

*David M. Zieglmeier* Date 6/11/21

David M. Zieglmeier, Anoka County Surveyor

Minnesota License Number 46179

# HISTORY OF GOVERNMENT CORNER

Page No. 113A

County of Anoka

State of Minnesota

Witness Corner of Sec. 32 Township 33 Range 25  
(On east line of SE 1/4)

## **CORNER HISTORY:**

August 26, 1988 - Set cast iron monument flush using area resurvey. Established ties to monument. Set sign and post on the north side.

July 25, 1994 - Found cast iron monument and updated ties.

February 26, 2003 - Found cast iron monument and updated ties. Established NAD 1983 (1996 adj.) Anoka County project coordinates by static GPS methods.

August 22, 2014 - Found cast iron monument and updated ties.

March 2018 - Found cast iron monument flush. Verified position by VRS GPS methods. Updated ties.