

CERTIFICATE OF LOCATION OF GOVERNMENT CORNER

County of Anoka

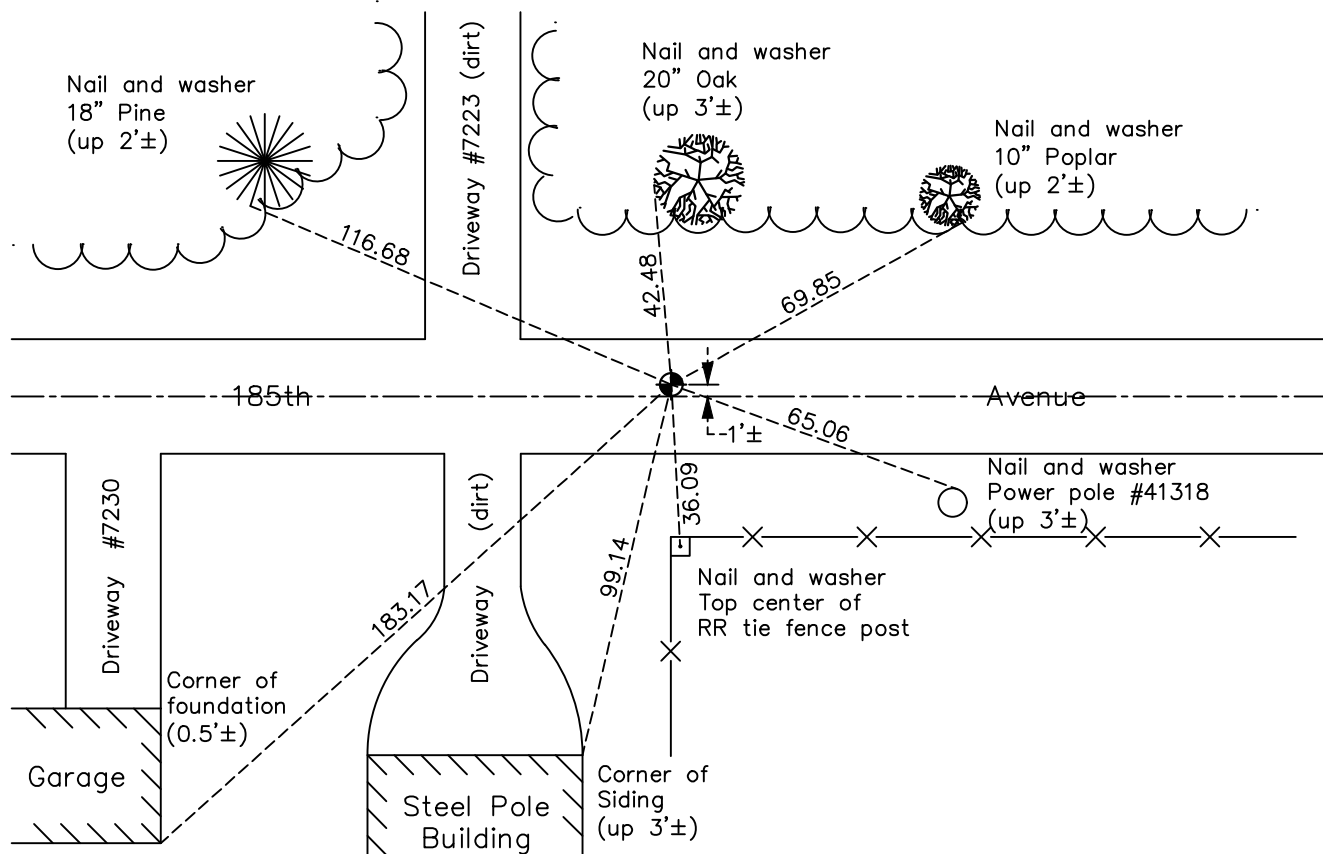
State of Minnesota

East 1/4 Corner of Sec. 33 Township 33 Range 25

On the 29th day of March, 1961, the described corner was evidenced by a Tamarack stake on the NE side of a 2'X2' rock. Monuments were replaced with a 1/2"X18" iron pipe.
 and to perpetuate the location of said corner, at the exact location thereof, a permanent marker was placed consisting of a cast iron monument

AND on the 12th day of March, 2018, said permanent marker was found and the ties
were updated

Updated reference ties are as shown below.



N

S

Revision Date

4/25/18

N.A.D. 1983 Coordinates
(1996 Adjustment)

County Project Coordinates	
Northing	<u>198936.5894</u>
Easting	<u>452960.7775</u>
Date	<u>9/25/02</u>

I hereby certify that this United States public land survey monument record is correct and complete to the best of my knowledge and belief.

David M Zieglsmeier Date 6/11/21

David M. Zieglsmeier, Anoka County Surveyor

Minnesota License Number 46179

HISTORY OF GOVERNMENT CORNER

Page No. 114

County of Anoka

State of Minnesota

East 1/4 Corner of Sec. 33 Township 33 Range 25

CORNER HISTORY:

May 1855 - This corner was established by James M. Marsh, Deputy Surveyor. Marsh marked the position by "set quarter section post" with one bearing tree marked as an accessory.

March 29, 1961 - Found a Tamarack stake on the NE side of a 2' x 2' rock. Replaced tamarack stake with a 1/2" x 18" iron pipe down 1.0'. Established ties to iron pipe.

August 16, 1965 - Found iron pipe and updated ties.

July 25, 1969 - Found iron pipe and rock missing due to road construction. Set cast iron monument down 0.5'± using corner ties. Updated ties.

July 24, 1973 - Found cast iron monument and updated ties.

August 2, 1976 - Found cast iron monument and updated ties.

July 13, 1979 - Found cast iron monument and updated ties.

August 10, 1982 - Found cast iron monument and updated ties.

September 8, 1988 - Found cast iron monument and updated ties.

July 14, 1994 - Reset cast iron monument after construction. Updated ties.

September 25, 2002 - Established NAD 1983 (1996 adj.) Anoka County project coordinates by static GPS methods.

October 10, 2002 - Found cast iron monument and updated ties.

November 13, 2013 - Found cast iron monument. Verified position by VRS GPS methods. Updated ties.

March 12, 2018 - Found cast iron monument. Verified position by VRS GPS methods. Updated ties.