

CERTIFICATE OF LOCATION OF GOVERNMENT CORNER

County of Anoka

State of Minnesota

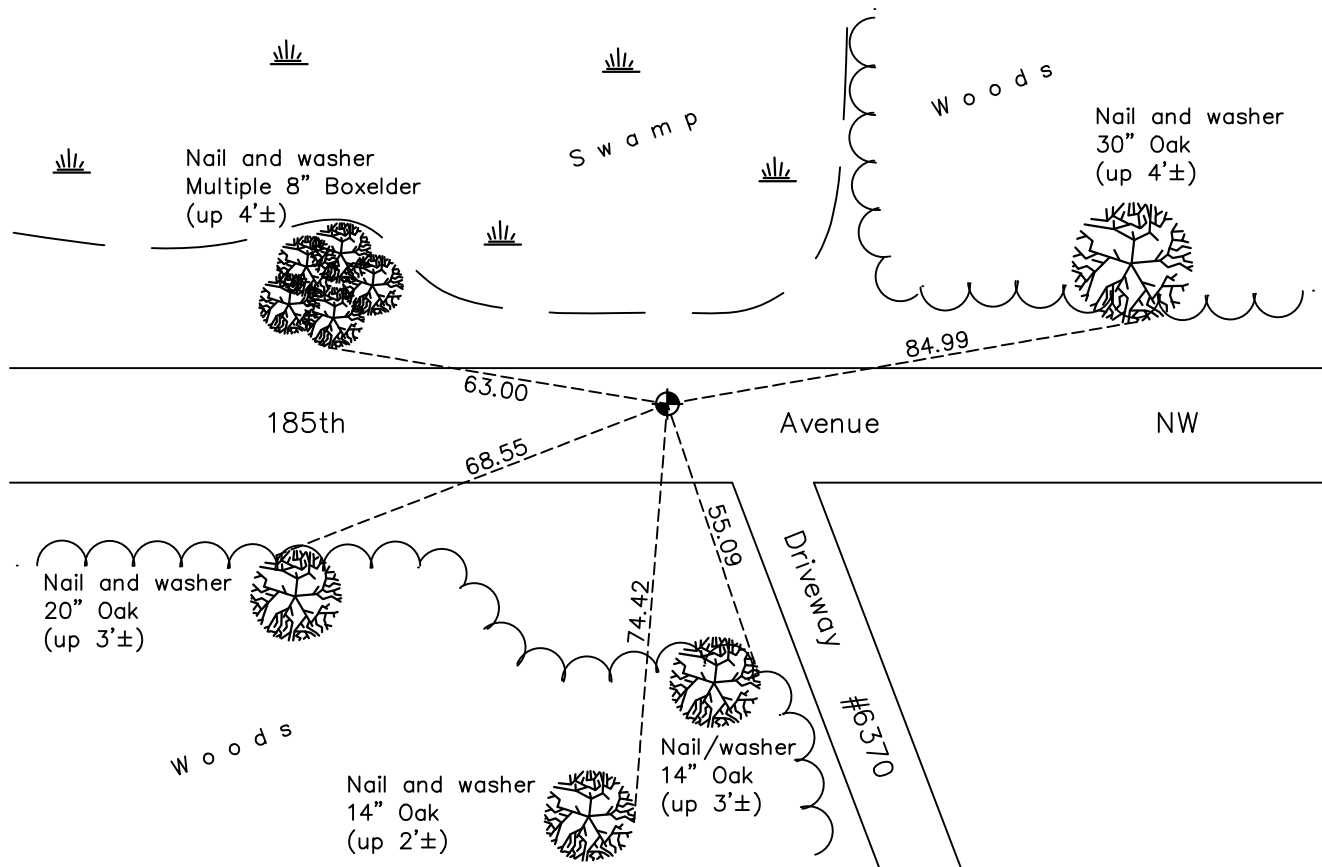
East 1/4 Corner of Sec. 34 Township 33 Range 25

On the 22nd day of July, 1963, the described corner was evidenced by an 8" square monument

and to perpetuate the location of said corner, at the exact location thereof, a permanent marker was placed consisting of a cast iron monument

AND on the 20th day of March, 2018, said permanent marker was found flush and the the ties were updated

Updated reference ties are as shown below.



Revision Date

4/25/18

N.A.D. 1983 Coordinates
(1996 Adjustment)

County Project Coordinates	
Northing	198874.3722
Easting	458203.5152
Date	9/25/02

I hereby certify that this United States public land survey monument record is correct and complete to the best of my knowledge and belief.

David M Zieglsmeier Date 6/11/21

David M. Zieglsmeier, Anoka County Surveyor

Minnesota License Number 46179

HISTORY OF GOVERNMENT CORNER

Page No. 115

County of Anoka

State of Minnesota

East 1/4 Corner of Sec. 34 Township 33 Range 25

CORNER HISTORY:

May 1855 - This corner was established by James M. Marsh, Deputy Surveyor. Marsh marked the position by "set quarter section post" with two bearing trees marked as accessories.

July 22, 1963 - Found 8" x 8" granite monument down 15" and leaning slightly northwest. Straightened up and updated ties. Set 3/4" iron pipe flush with the surface over the center of granite monument.

August 16, 1965 - Found iron pipe and updated ties.

July 24, 1969 - Iron pipe not over center. Set a shortened cast iron monument down 0.5'± over center of granite. Updated ties.

July 24, 1973 - Found cast iron monument and updated ties.

August 2, 1976 - Found cast iron monument and updated ties.

July 13, 1979 - Found cast iron monument and updated ties.

August 10, 1982- Found cast iron monument and updated ties.

July 1, 1985 - Found cast iron monument and updated ties.

September 8, 1988 - Found cast iron monument and updated ties.

July 14, 1994 - Reset cast iron monument after construction. Updated ties.

September 25, 2002 - Established NAD 1983 (1996 adj.) Anoka County project coordinates by static GPS methods.

October 10, 2002 - Found cast iron monument and updated ties.

November 15, 2013 - Found temporary P.K. nail. Cast iron monument missing.

December 2, 2013 - Replaced P.K. nail with cast iron monument. Verified position by VRS GPS methods. Updated ties.

March 20, 2018 - Found cast iron monument flush. Verified position by VRS GPS methods. Updated ties.