

CERTIFICATE OF LOCATION OF GOVERNMENT CORNER

County of Anoka

State of Minnesota

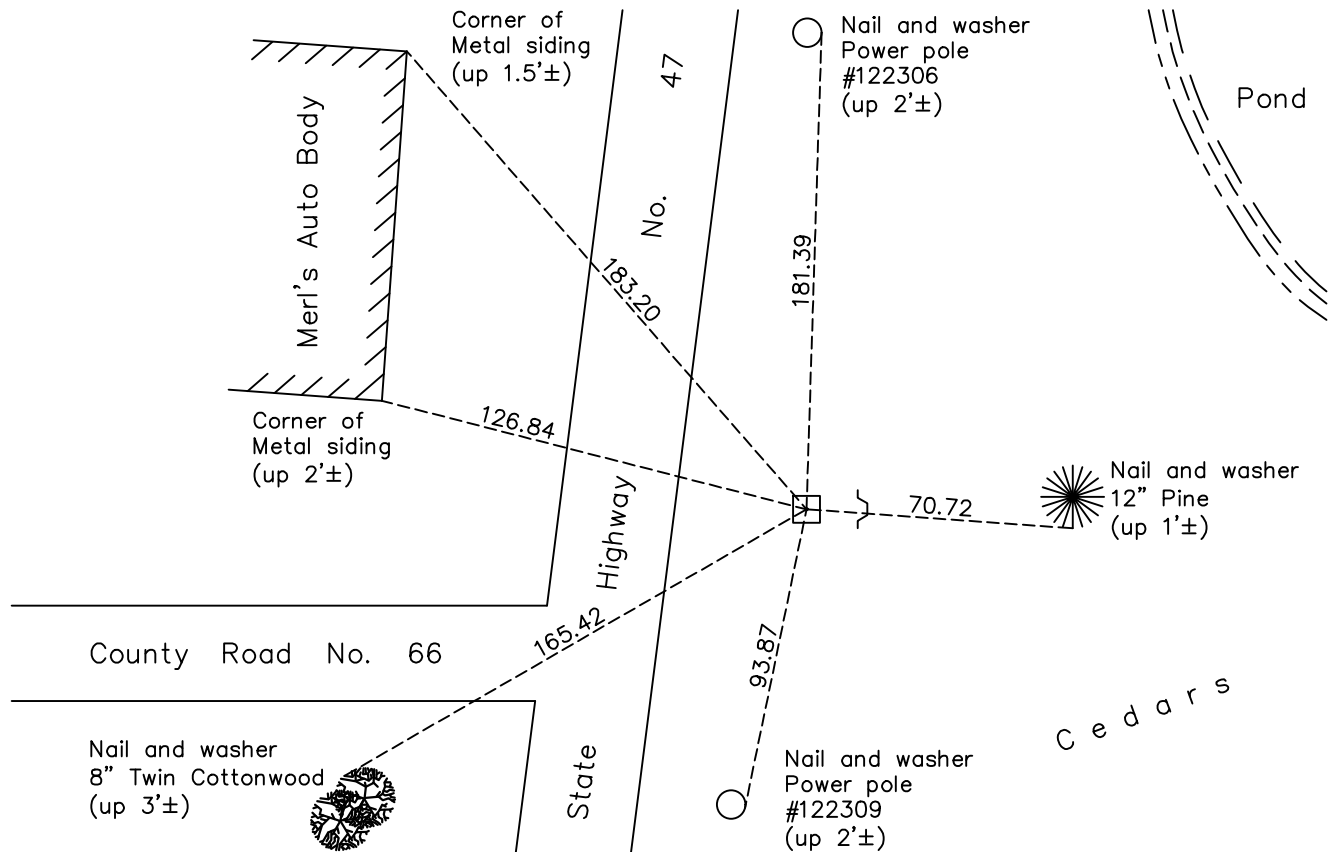
West 1/4 Corner of Sec. 36 Township 33 Range 25

On the 15th day of October, 1963, the described corner was evidenced by a 6"X6" granite monument

and to perpetuate the location of said corner, at the exact location thereof, a permanent marker was placed consisting of the same granite monument with a sign and post on the east side

AND on the 13th day of March, 2018, said permanent marker was found down 0.7'± and the ties were updated

Updated reference ties are as shown below.



Revision Date

4/25/18

N.A.D. 1983 Coordinates
(1996 Adjustment)

County Project Coordinates	
Northing	<u>198835.5031</u>
Easting	<u>463415.8393</u>
Date	<u>10/10/02</u>

I hereby certify that this United States public land survey monument record is correct and complete to the best of my knowledge and belief.

David M. Zieglmeier Date 6/11/21

David M. Zieglmeier, Anoka County Surveyor

Minnesota License Number 46179

HISTORY OF GOVERNMENT CORNER

Page No. 116

County of Anoka

State of Minnesota

West 1/4 Corner of Sec. 36 Township 33 Range 25

CORNER HISTORY:

May 1855 - This corner was established by James M. Marsh, Deputy Surveyor. Marsh marked the position by "set quarter section post" with two bearing trees marked as accessories.

July 29, 1955 - E.A. Westman Found a 4" x 4" stone monument in field and updated ties.

October 15, 1963 - Found 6" x 6" granite monument down 0.5'± in pasture and set to cardinal points. Updated ties.

August 16, 1965 - Found granite monument and updated ties.

July 25, 1969 - Found granite monument w/steel sign post on east side. Updated ties.

July 24, 1973 - Found granite monument and updated ties.

August 2, 1976 - Found granite monument and updated ties.

July 12, 1979 - Found granite monument and updated ties.

July 1, 1985 - Found granite monument and updated ties.

September 2, 1988 - Found granite monument and updated ties.

September 15, 1992 - Found granite monument and updated ties.

July 25, 1994 - Found granite monument and updated ties.

October 10, 2002 - Found granite monument and updated ties. Established NAD 1983 (1996 adj.) Anoka County project coordinates by static GPS methods.

May 17, 2013 - Found granite monument. Verified position by VRS GPS methods. Updated ties.

March 13, 2018 - Found granite monument down 0.7'±. Verified position by VRS GPS methods. Updated ties.