

# CERTIFICATE OF LOCATION OF GOVERNMENT CORNER

County of Anoka

State of Minnesota

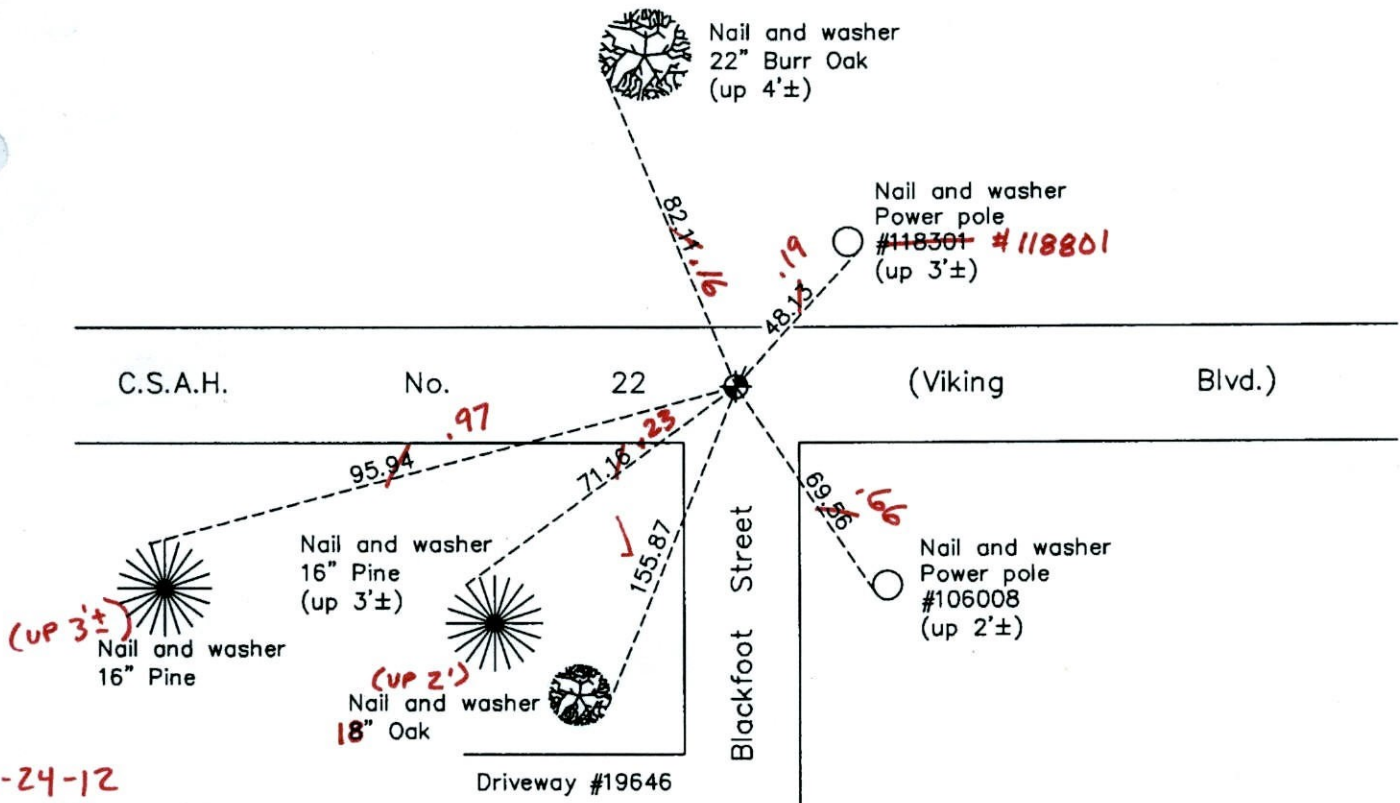
## Northwest Corner of Sec. 29 Township 33 Range 24

On the 13th day of July, 1960, the described corner was evidenced by a concrete monument

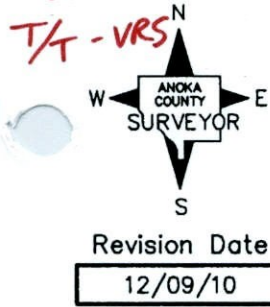
and to perpetuate the location of said corner, at the exact location thereof, a permanent marker was placed consisting of a cast iron monument (1' S. of G)

AND on the 8th day of December, 2010, said permanent marker was found flush with the surface and the ties were updated

Updated reference ties are as shown below.



2-24-12  
BK-SS



N.A.D. 1983 Coordinates  
(1996 Adjustment)

| County Project Coordinates |             |
|----------------------------|-------------|
| Northing                   | 206546.3132 |
| Easting                    | 473966.2814 |
| Date                       | 2/15/01     |

I hereby certify that this United States public land survey monument record is correct and complete to the best of my knowledge and belief.

*Larry D. Hoium* Date 12/09/10

Larry D. Hoium, Anoka County Surveyor

Minnesota License Number 18165

VRS 3D = 0.04

N = 206546.3003

E = 473966.2454



# CERTIFICATE OF LOCATION OF GOVERNMENT CORNER

County of Anoka

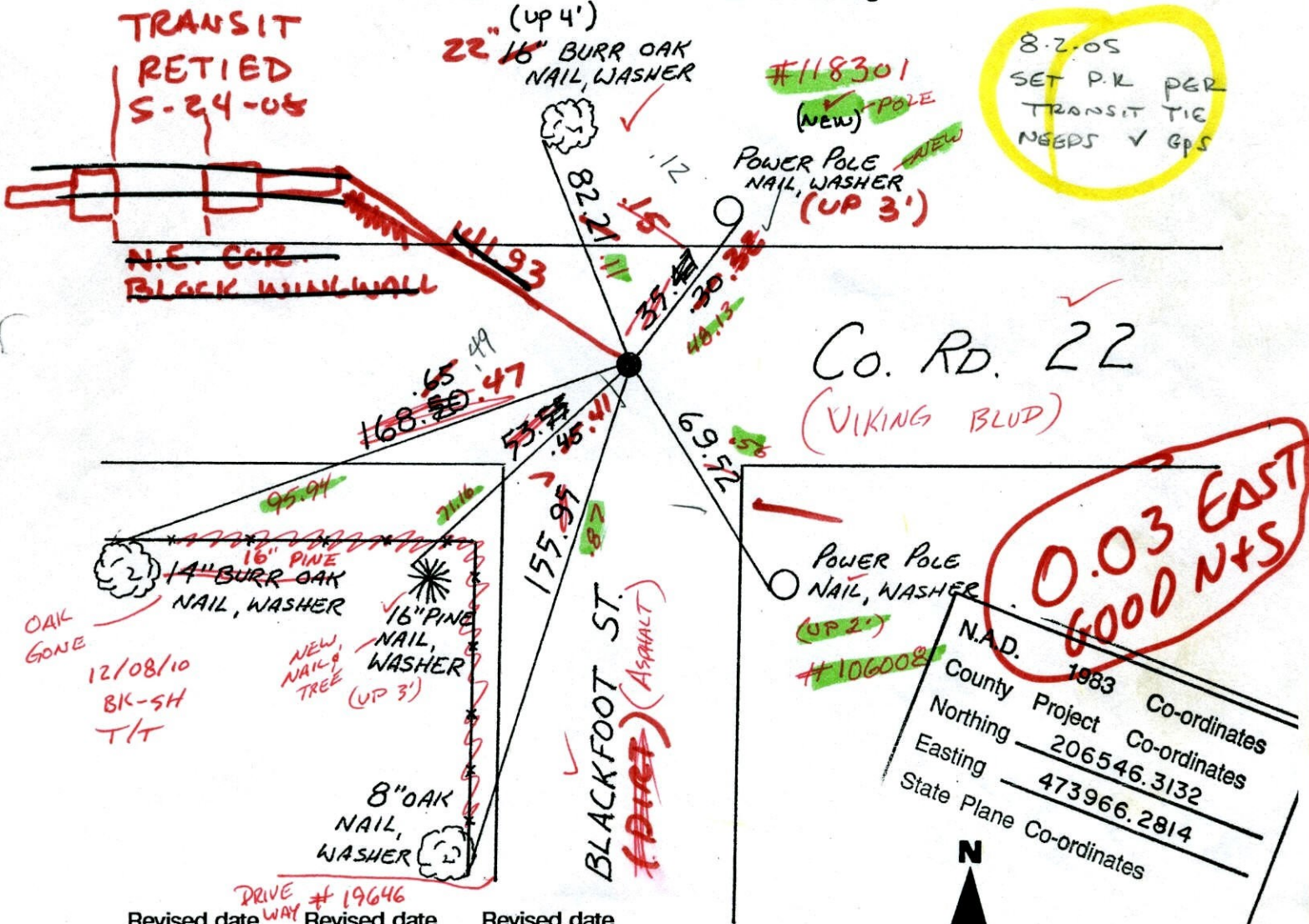
State of Minnesota

NORTHWEST Corner of Sec. 29 Township 33 Range 24

I hereby certify that on the 13 day of JULY, 1960, I found the described corner which was evidenced by CONCRETE MON.

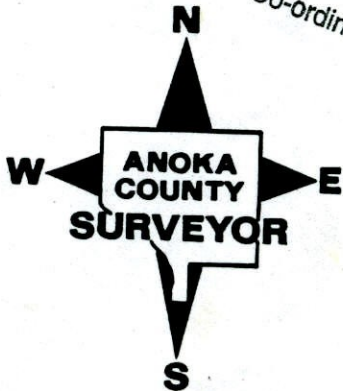
and I further certify that to perpetuate the location of said corner, I did, at the exact location thereof, place a permanent marker consisting of CAST IRON MONUMENT (FLUSH)

which reference or witness monuments are located in the manner following:



|                          |             |              |
|--------------------------|-------------|--------------|
| N.A.D.                   | 1983        | Co-ordinates |
| County Project           |             | Co-ordinates |
| Northing                 | 206546.3132 |              |
| Easting                  | 473966.2814 |              |
| State Plane Co-ordinates |             |              |

| Revised date | Revised date | Revised date |
|--------------|--------------|--------------|
| 12-30-91     |              |              |
| 5-27-97      |              |              |
| 2-15-01      |              |              |
|              |              |              |
|              |              |              |
|              |              |              |
|              |              |              |



DONE  
12/09/10  
LH



TRANSIT TIE 101  
NW COR. SEC. 29 T 33 R 24

RETIRED & REMOVED CAST IRON  
FOR CONSTRUCTION

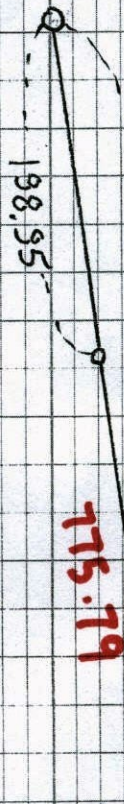
CO. RD. # 22

C.I.M.

5-24-05  
J.S. B.K.



BLACKFOOT ST.



#19671  
DRIVEWAY

974.74

(BLACKTOP)

P.K. NAIL E

195TH LN



# CERTIFICATE OF LOCATION OF GOVERNMENT CORNER

County of Anoka

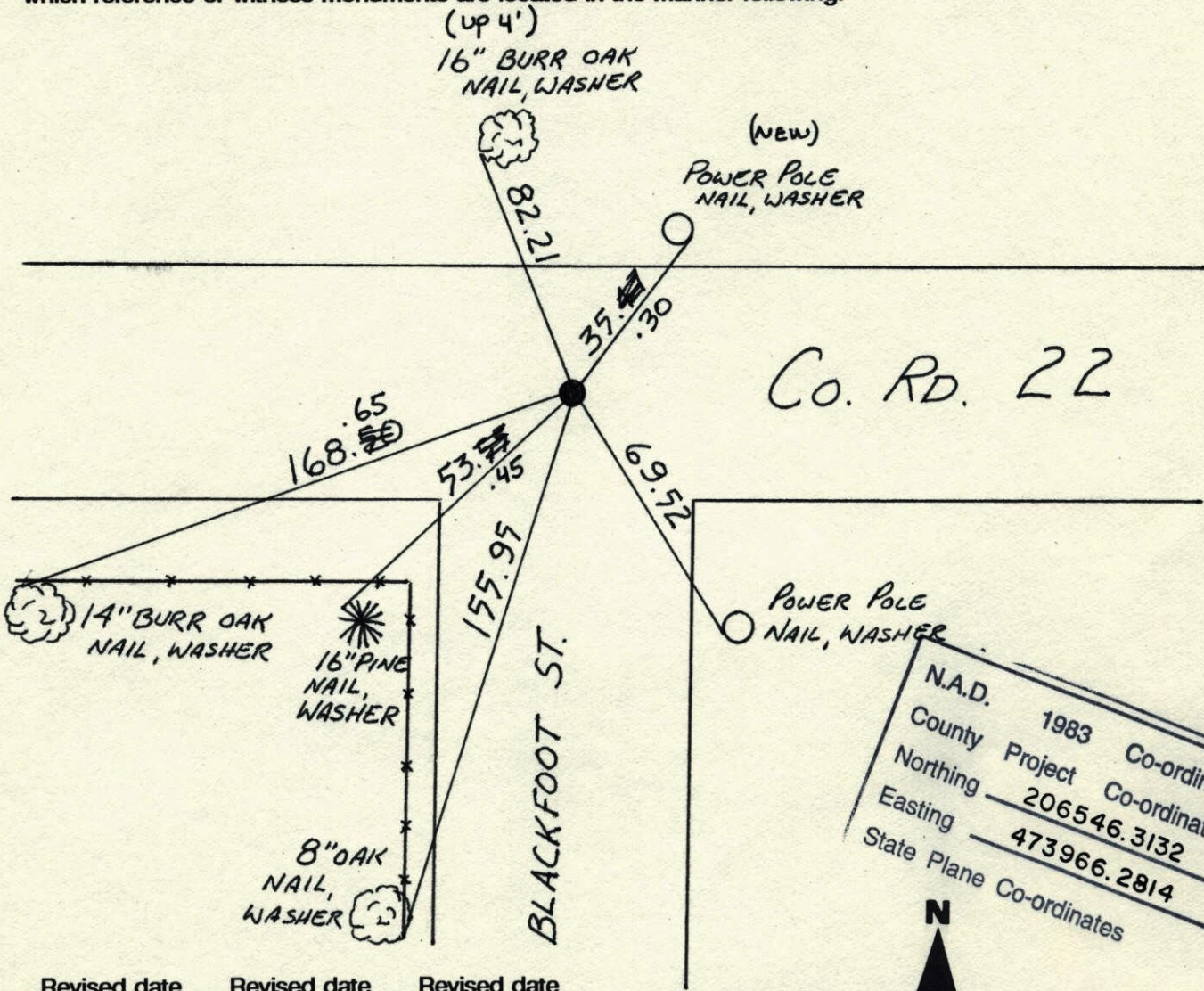
State of Minnesota

NORTHWEST Corner of Sec. 29 Township 33 Range 24

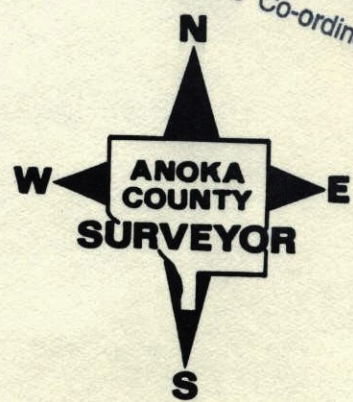
I hereby certify that on the 13 day of JULY, 1960, I found the described corner which was evidenced by CONCRETE MON.

and I further certify that to perpetuate the location of said corner, I did, at the exact location thereof, place a permanent marker consisting of CAST IRON

which reference or witness monuments are located in the manner following:



|                          |             |              |
|--------------------------|-------------|--------------|
| N.A.D.                   | 1983        | Co-ordinates |
| County                   | Project     | Co-ordinates |
| Northing                 | 206546.3132 |              |
| Easting                  | 473966.2814 |              |
| State Plane Co-ordinates |             |              |



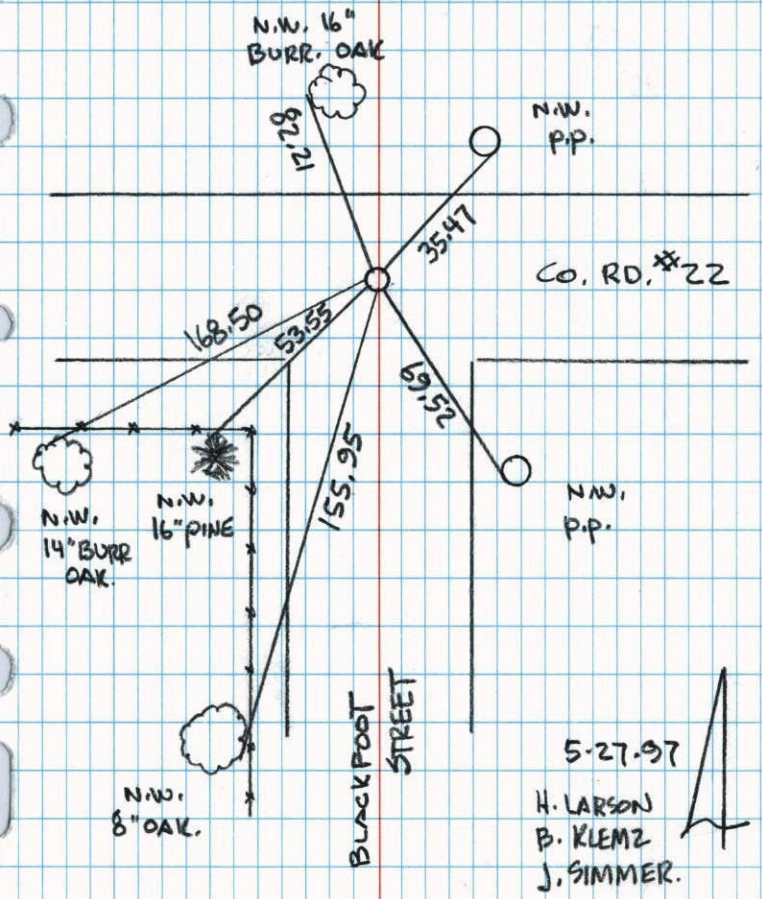
| Revised date | Revised date | Revised date |
|--------------|--------------|--------------|
| 12-30-91     |              |              |
| 5-27-97      |              |              |
| 2-15-01      |              |              |
|              |              |              |
|              |              |              |
|              |              |              |



NORTHWEST COR. SEC 29 T 33 R 24

RETIED CAST IRON MONUMENT

NATIONAL PRINTFAST NO. 446



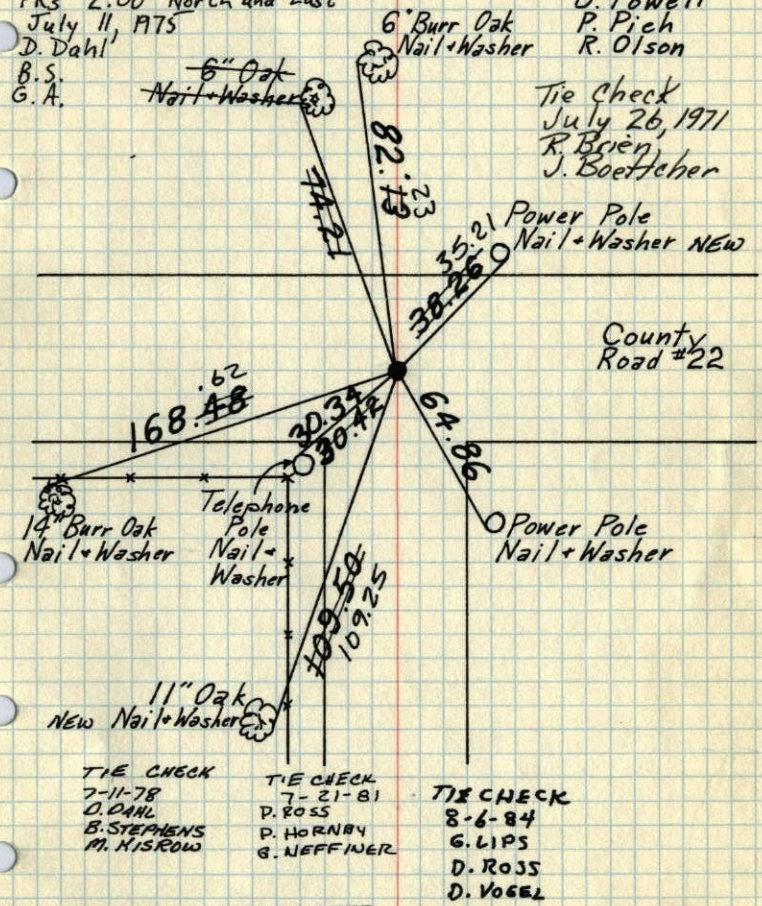
5-27-97  
 H. LARSON  
 B. KLEMZ  
 J. SIMMER.

NW Cor. Sec. 29-T33-R24

Removed Concrete Monument with top broken off, and replaced with Cast Iron monument down 0.5'±.

Raised Cast Iron  
 PKs 2.00' North and East  
 July 11, 1975  
 D. Dahl  
 B.S.  
 G.A.

June 28, 1968  
 D. Powell  
 P. Pich  
 R. Olson



TIE CHECK  
 7-11-78  
 D. DAHL  
 B. STEPHENS  
 W. HISROW

TIE CHECK  
 7-21-81  
 P. ROSS  
 P. HORNBY  
 G. NEFFNER

TIE CHECK  
 8-6-84  
 G. LIPS  
 D. ROSS  
 D. VOGEL

TEMPERATURE CORRECTED  
 AND HORIZONTALLY  
 TAPED MEASUREMENTS

ROLAND W. ANDERSON  
 COUNTY SURVEYOR  
 ANOKA COUNTY, MINNESOTA

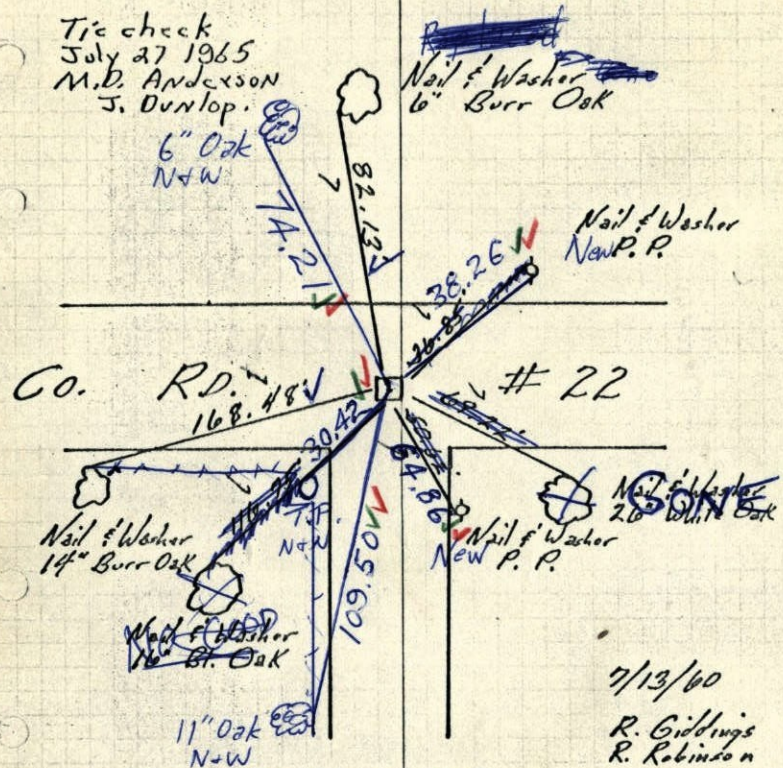


NW Cor. Sec 29 - T33 - R24

Conc. Mon. flush

Top broken off, placed 1/2" iron pipe on No. side flush.

Tie check  
July 27 1965  
M.D. Anderson  
J. Dunlop.



7/13/60  
R. Giddings  
R. Robinson

TEMPERATURE CORRECTED  
AND HORIZONTALLY  
TAPED MEASUREMENTS

Measured 2 remaining  
ties. Removed  
concrete + set  
C.I. Mon. in place.  
Down 0.5'

ROLAND W. ANDERSON  
COUNTY SURVEYOR  
ANOKA COUNTY, MINNESOTA

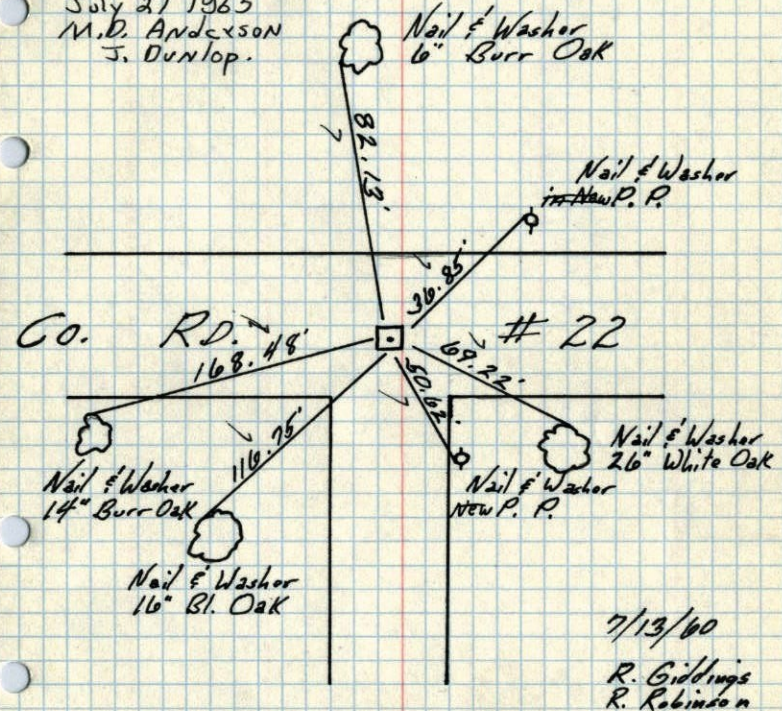
6/28/68  
#7-70  
D. Powell  
P. Pich  
R. Olson

NW Cor. Sec 29 - T33 - R24

Conc. Mon. flush

Top broken off, placed 1/2" iron pipe on No. side flush.

Tie check  
July 27 1965  
M.D. Anderson  
J. Dunlop.



7/13/60  
R. Giddings  
R. Robinson

TEMPERATURE CORRECTED  
AND HORIZONTALLY  
TAPED MEASUREMENTS

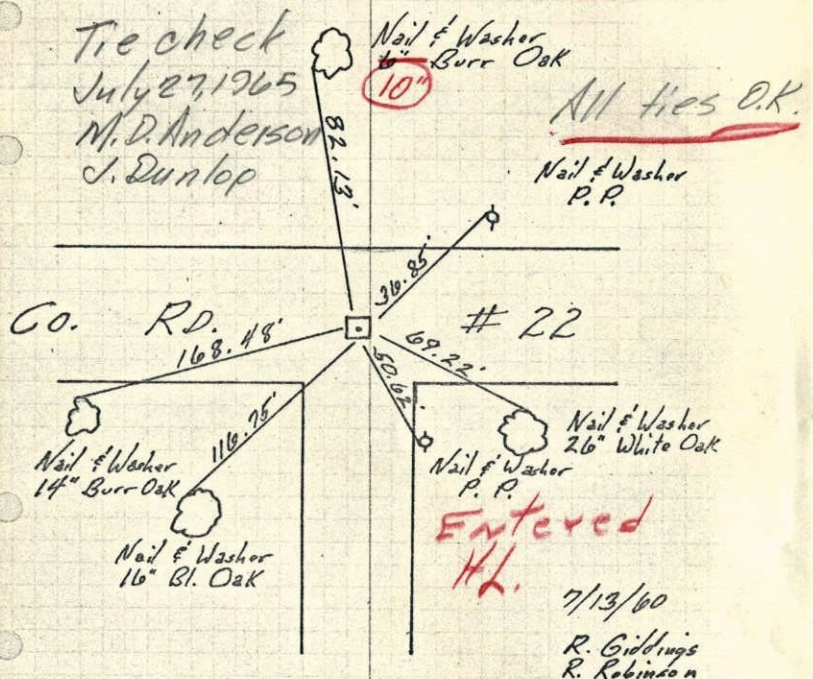
ROLAND W. ANDERSON  
COUNTY SURVEYOR  
ANOKA COUNTY, MINNESOTA



501

NW Cor. Sec 29 - T33 - R 24

Conc. Mon. Flush  
top broken off  
place 1/2" iron pipe  
on N. face flush



TEMPERATURE CORRECTED  
AND HORIZONTALLY  
TAPED MEASUREMENTS

ROLAND W. ANDERSON  
COUNTY SURVEYOR  
ANOKA COUNTY, MINNESOTA

N.W. Corn. of Sec 29 - T33 - R24  
Conc. Mon. Flush

