

CERTIFICATE OF LOCATION OF GOVERNMENT CORNER

County of Anoka

State of Minnesota

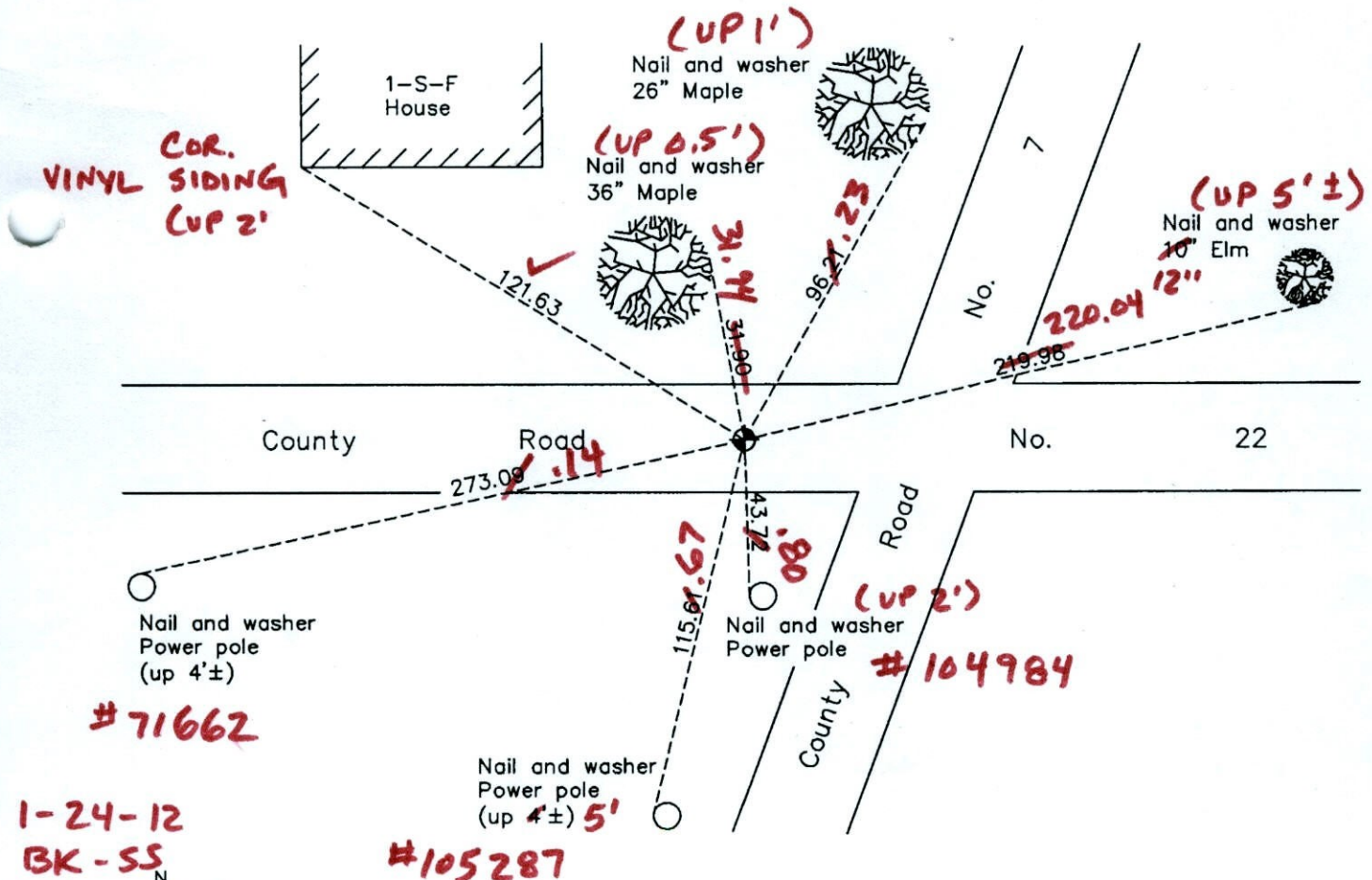
South $\frac{1}{4}$ Corner of Sec. 19 Township 33 Range 24

On the 15th day of November, 1961, the described corner was evidenced by a concrete monument witness to actual corner

and to perpetuate the location of said corner, at the exact location thereof, a permanent marker was placed consisting of a cast iron monument **ON E RD.**

AND on the 8th day of September, 2005, said permanent marker was replaced with a new cast iron monument after construction and the ties were updated

Updated reference ties are as shown below.



1-24-12
BK-SS
T/T - VRS

Revision Date
12/06/10

N.A.D. 1983 Coordinates
(1996 Adjustment)

County Project Coordinates	
Northing	206598.5376
Easting	471344.6564
Date	2/15/01

I hereby certify that this United States public land survey monument record is correct and complete to the best of my knowledge and belief.

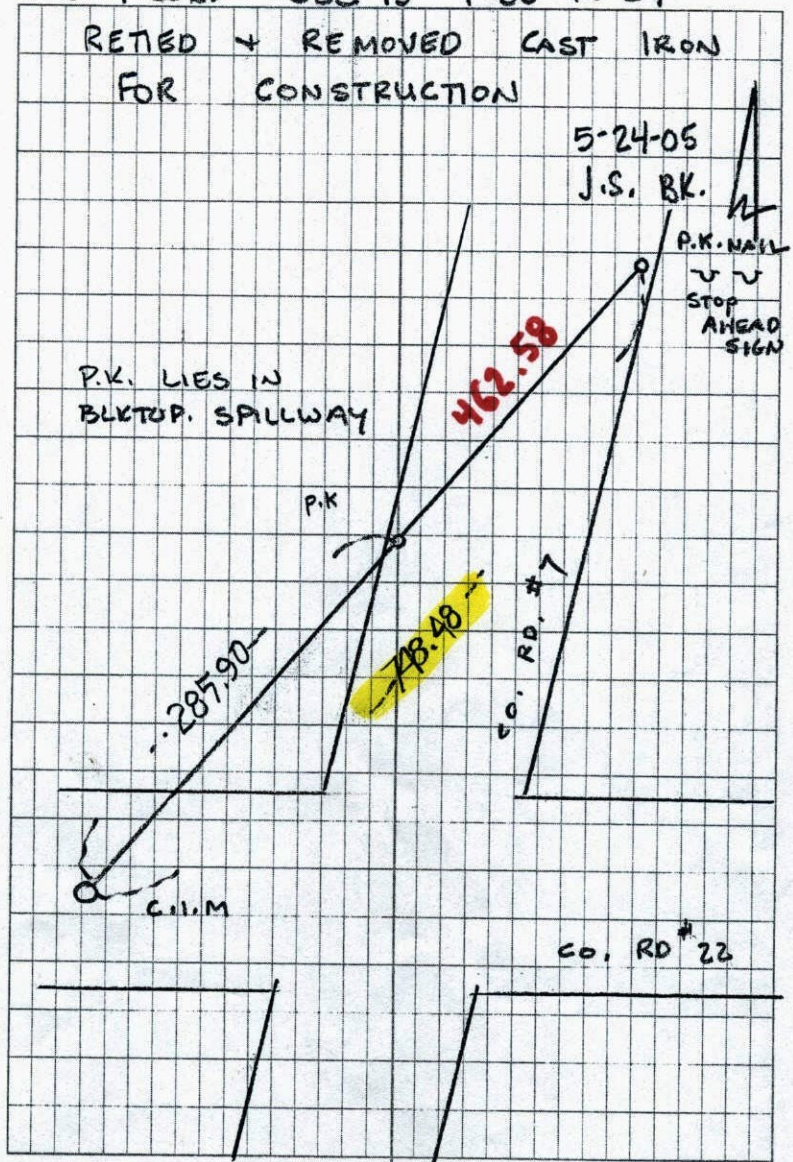
Larry D. Hoium Date 12/06/10

Larry D. Hoium, Anoka County Surveyor
Minnesota License Number 18165

VRS 3D = 0.05 N = 206598.4859 E = 471344.6496

TRANSIT TIE 102
S 1/4 COR. SEC 19 T 33 R 24

RETIRED + REMOVED CAST IRON
FOR CONSTRUCTION



CERTIFICATE OF LOCATION OF GOVERNMENT CORNER

County of Anoka

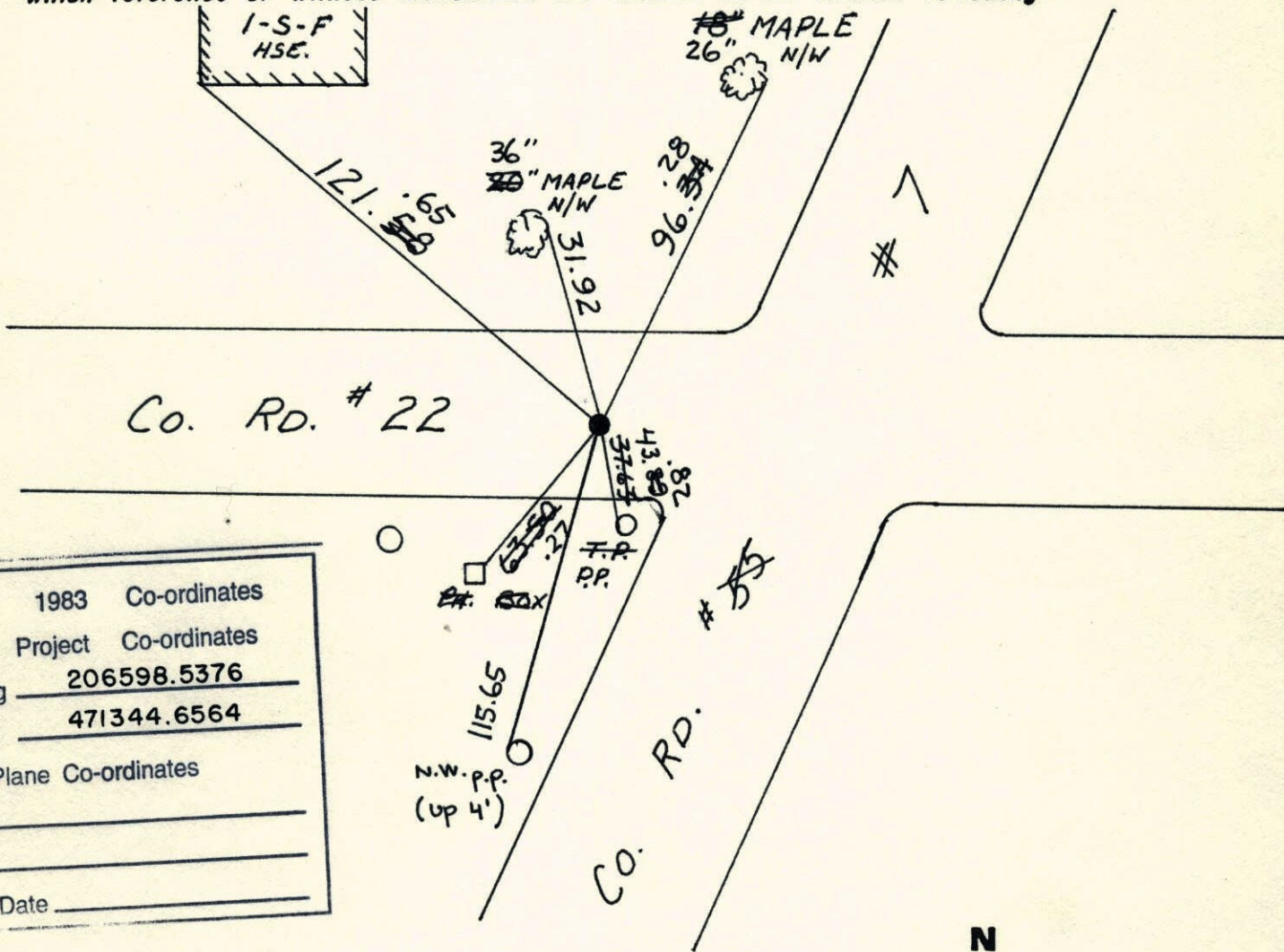
State of Minnesota

SOUTH QTR. Corner of Sec. 19 Township 33 Range 24

I hereby certify that on the 15 day of Nov., 1961, I found the described corner which was evidenced by CONCRETE MON. WITNESS TO ACTUAL

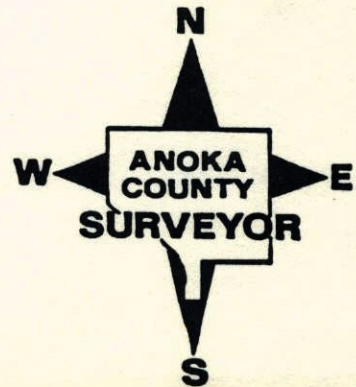
and I further certify that to perpetuate the location of said corner, I did, at the exact location thereof, place a permanent marker consisting of CAST IRON

which reference or witness monuments are located in the manner following:



N.A.D.	1983	Co-ordinates
County	Project	Co-ordinates
Northing	206598.5376	
Easting	471344.6564	
State Plane Co-ordinates		
Y	_____	
X	_____	
Date	_____	

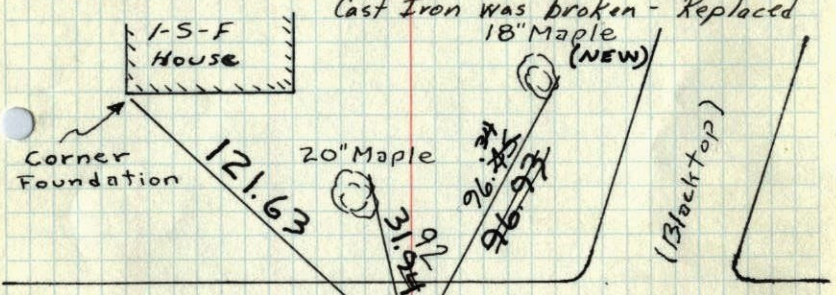
Revised date	Revised date	Revised date
7-27-65	7-16-87	
6-28-68	12-30-91	
8-6-71	5-27-97	
6-29-72	2-15-01	
7-11-75		
7-21-81		
7-11-78		



S 1/4 Cor. Sec. 19, T33, R24

Set Cast Iron monument from ties by this office from Concrete witness cor. to the center of a large maple tree (since removed) which was the 1/4 Corner.

Nails and washers in all tie poles and trees. Cast Iron was broken - Replaced 18" Maple (NEW)



Cast Iron Monument down 0.5'
 July 27, 1965 57' W. of M.D. Anderson & Stripe
 J. Dunlop Co. Rd. #55

Tie Check Mon. Raised
 Aug 6, 1971 Aug. 29, 1972
 R. Brian B. Olson
 J. Boettcher J. Scottcher
 B. Olson R. Brian

TEMPERATURE CORRECTED
 TIE CHECK HORIZONTALLY
 8-6-81 G. LIPS MEASUREMENTS
 D. ROSS
 D. VOGEL

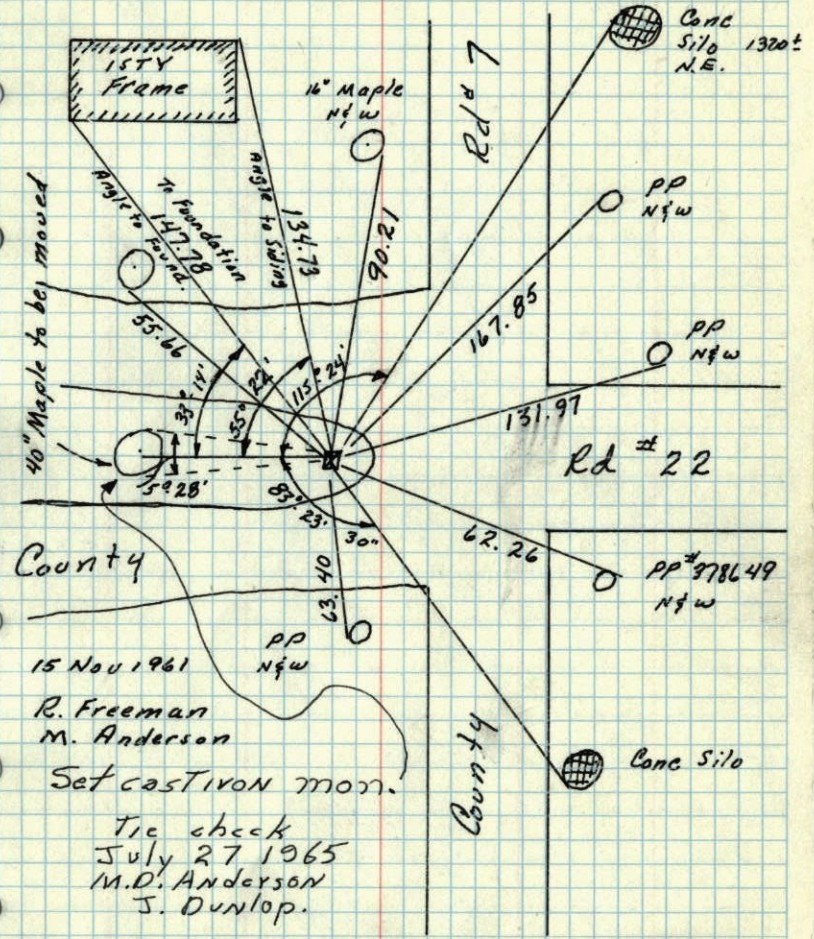
Tie Check July 11, 1975
 D. Dahl
 B.S.
 G.A.

Tie Check June 28, 1968
 D. Powell
 P. Pieh
 R. Olson

TIE CHECK 7-21-81
 P. ROSS
 P. HORNBY
 G. NEFFINGER

ROLAND W. ANDERSON
 COUNTY SURVEYOR
 ANOKA COUNTY, MINNESOTA

S 1/4 Cor. Sec 19-33-24 Oak Grove
 Wit. Conc. Mon. Flush with Iron on N. Face
 Sec Cor is 39.0' W 40" Maple is True Cor.



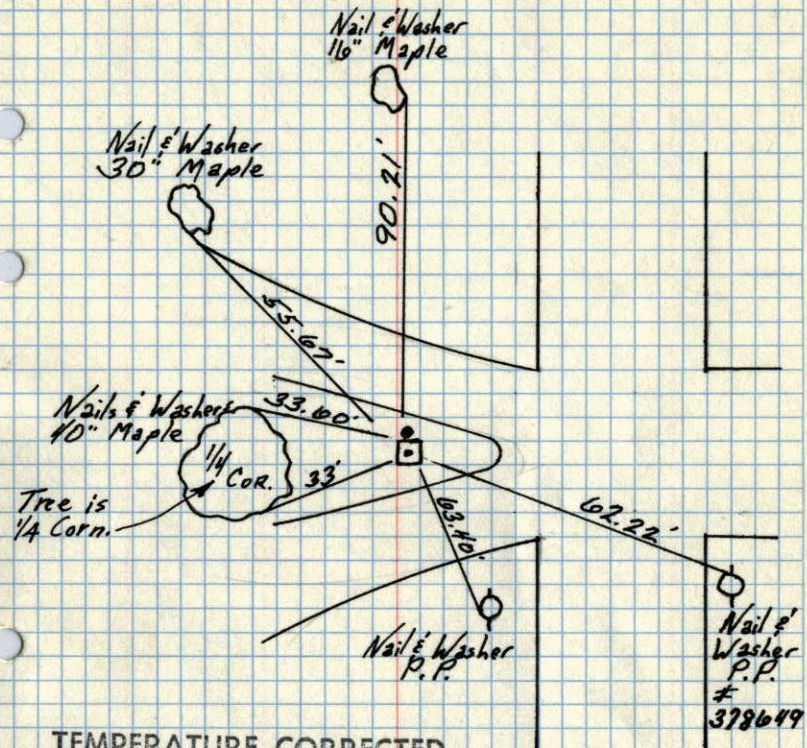
County
 15 Nov 1961
 R. Freeman
 M. Anderson
 Set cast iron mon.

Tie check July 27 1965
 M.D. Anderson
 J. Dunlop.

TEMPERATURE CORRECTED
 AND HORIZONTALLY
 TAPED MEASUREMENTS

ROLAND W. ANDERSON
 COUNTY SURVEYOR
 ANOKA COUNTY, MINNESOTA

S 1/4 Cor. Sec 19 - T33 - R24
 Conc. Mon. Iron on North Side
 For Witness Cor.
 True Corner 33' W. of Conc. Mon.



TEMPERATURE CORRECTED
 AND HORIZONTALLY
 TAPED MEASUREMENTS

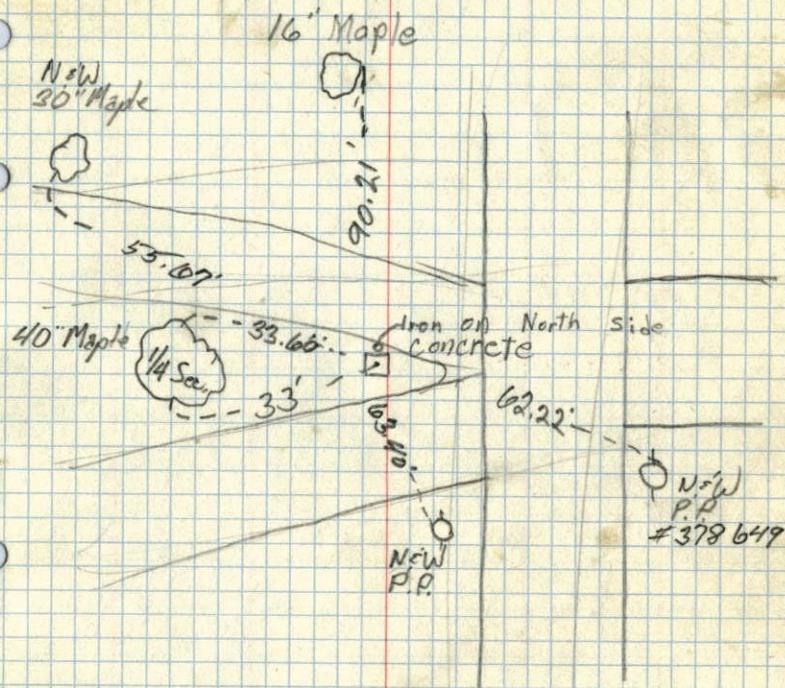
7/13/00

Giddings
 Robinson

ROLAND W. ANDERSON
 COUNTY SURVEYOR
 ANOKA COUNTY, MINNESOTA

S 1/4 Cor. Sec 19 - T33 - R24

Witness Cor. 33' E Conc. Mon.



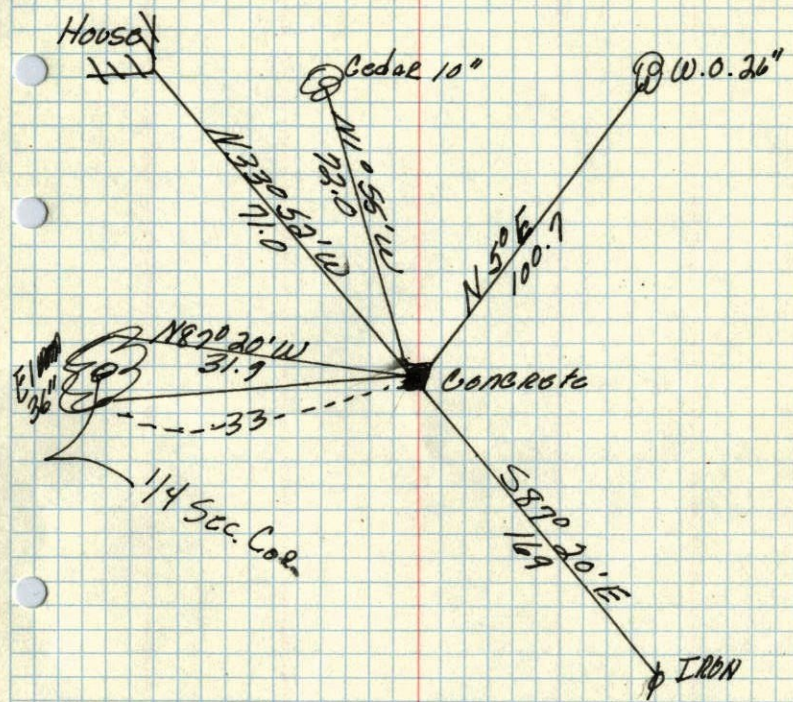
7/13/00

Giddings
 Robinson

~~7/15/00~~

S 1/4 cor. of Sec. 19. T. 33. R. 24 ✓

Witness cor. 33' E., set Cor. Mon.



MAR. 27, 1944
CARTER, JR