

CERTIFICATE OF LOCATION OF GOVERNMENT CORNER

County of Anoka

State of Minnesota

Northwest Corner of Sec. 30 Township 33 Range 24

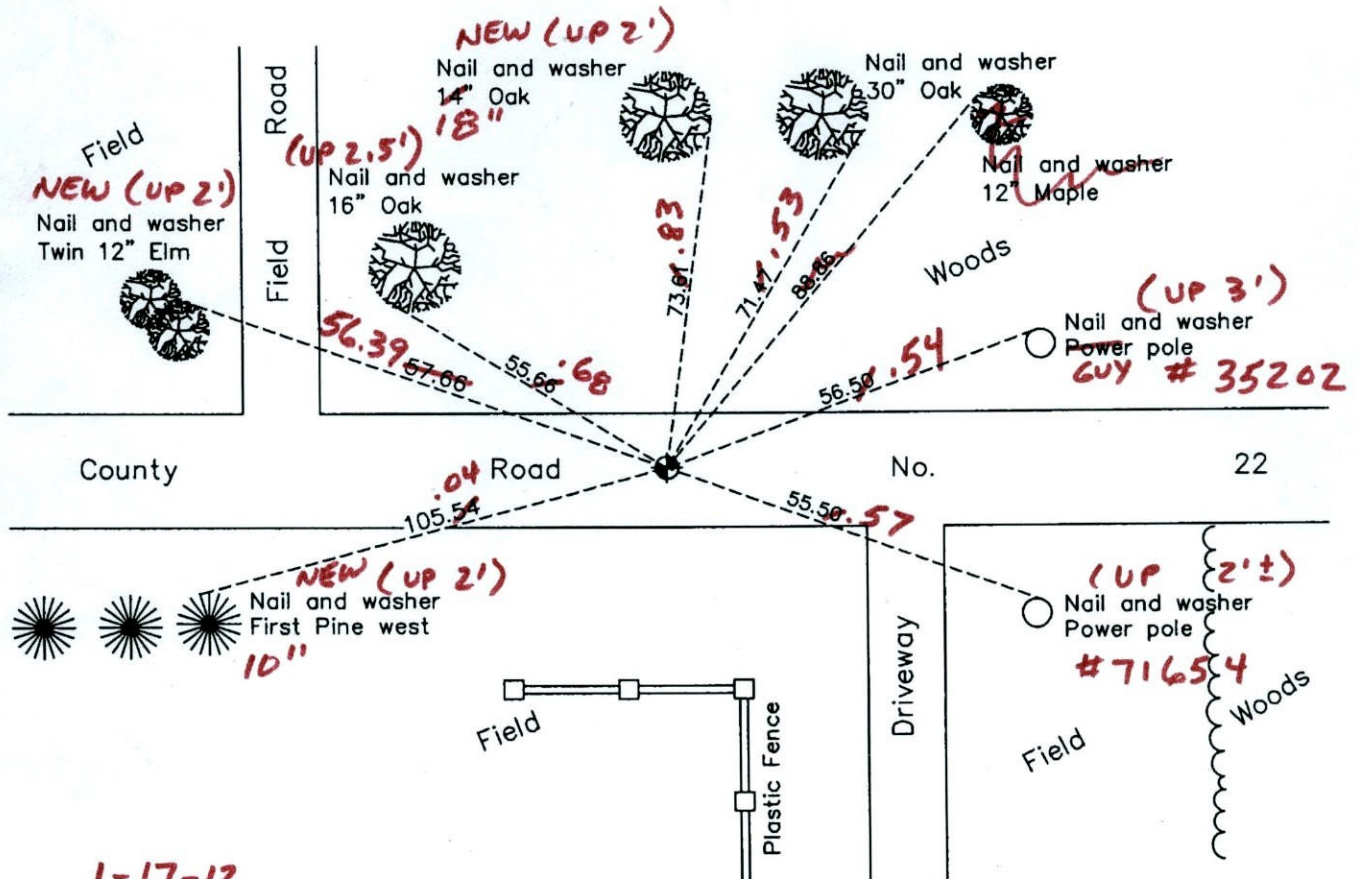
On the 10th day of February, 1960, the described corner was evidenced by a concrete monument

and to perpetuate the location of said corner, at the exact location thereof, a permanent marker was placed consisting of a cast iron monument on top of the concrete monument

(MON. 1'± NORTH OF E)

AND on the 7th day of September, 2005, said permanent marker was replaced with a new cast iron monument after construction and the ties were updated

Updated reference ties are as shown below.



1-17-12
BK-SS
T/T-VRS

N.A.D. 1983 Coordinates
(1996 Adjustment)

County Project Coordinates	
Northing	206656.3005
Easting	468643.9000
Date	2/15/01

I hereby certify that this United States public land survey monument record is correct and complete to the best of my knowledge and belief.

Larry D. Hoium Date 12/03/10
 Larry D. Hoium, Anoka County Surveyor
 Minnesota License Number 18165

VRS 3D = 0.12

N = 206656.3615

E = 468643.8834

CERTIFICATE OF LOCATION OF GOVERNMENT CORNER

County of Anoka

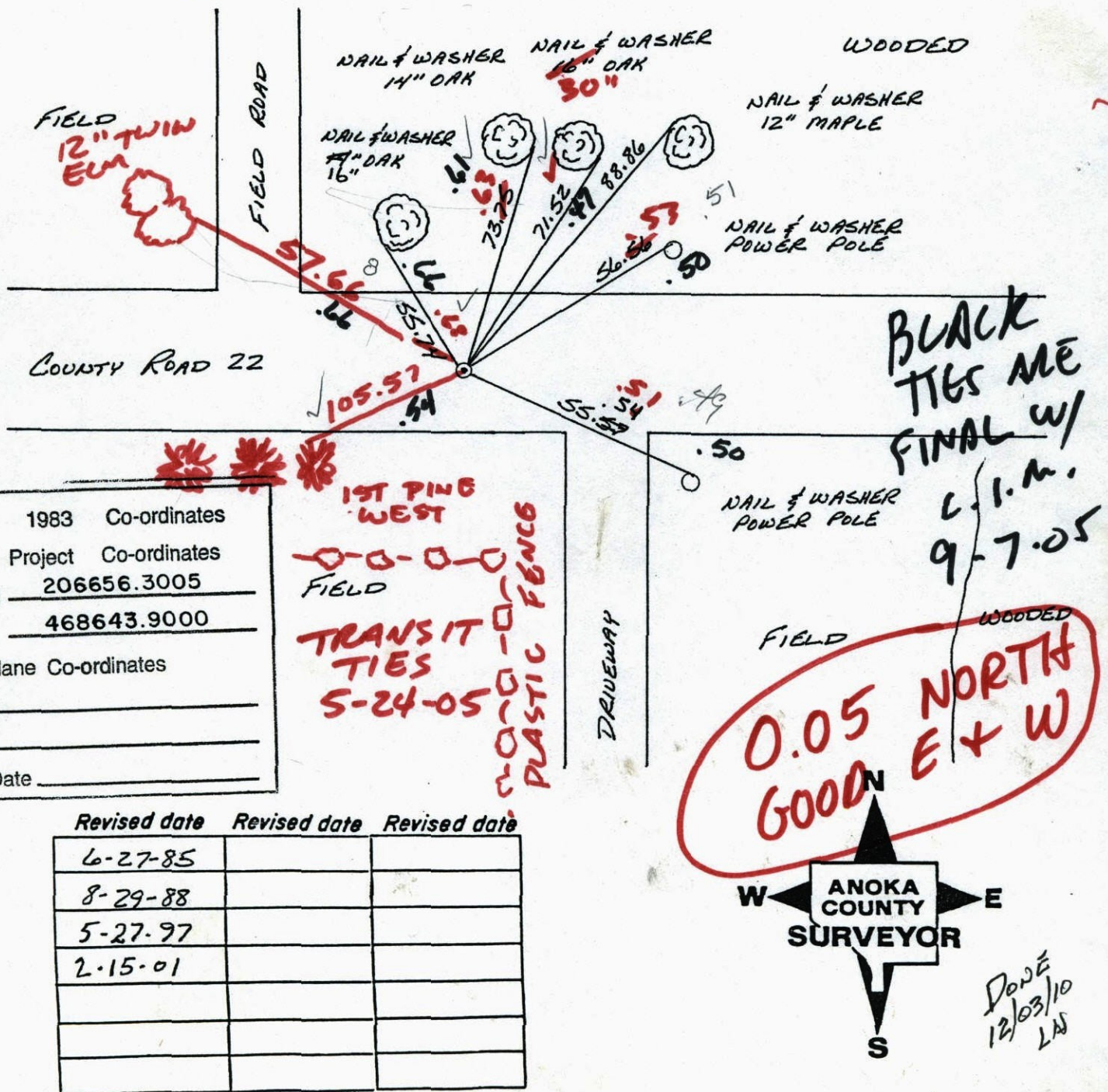
State of Minnesota

NORTHWEST Corner of Sec. 30 Township 33 Range 24

I hereby certify that on the 10 day of FEBRUARY, 1960, I found the described corner which was evidenced by CONCRETE MONUMENT

and I further certify that to perpetuate the location of said corner, I did, at the exact location thereof, place a permanent marker consisting of CAST IRON MONUMENT ON TOP OF THE CONCRETE MONUMENT

which reference or witness monuments are located in the manner following:



N.A.D.	1983	Co-ordinates
County Project	Co-ordinates	
Northing	206656.3005	
Easting	468643.9000	
State Plane Co-ordinates		
Y		
X		
Date		

Revised date	Revised date	Revised date
6-27-85		
8-29-88		
5-27-97		
2-15-01		

Done
12/03/10
LAS

TRANSIT TIE

102A

N.W. COR. SEC 30 T 33 R 24

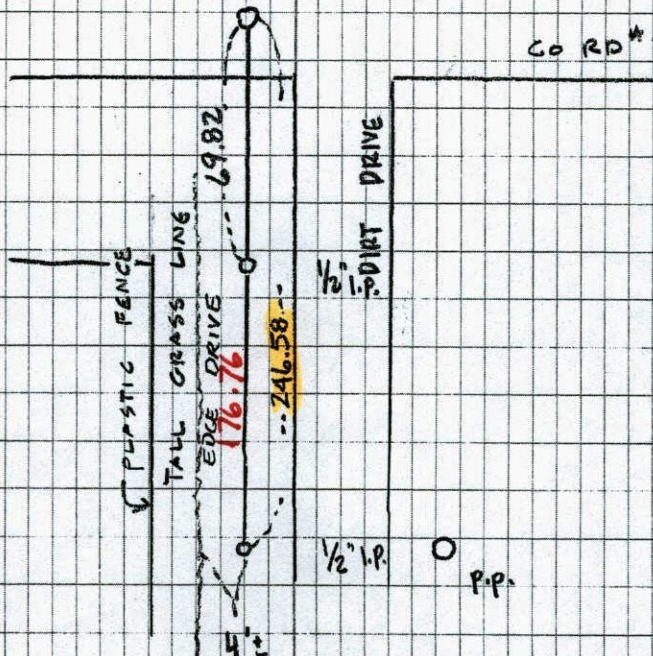
RETIED + REMOVED CAST IRON
FOR CONSTRUCTION

5-24-05

J.S. BK.



Co RD # 22



CERTIFICATE OF LOCATION OF GOVERNMENT CORNER

County of Anoka

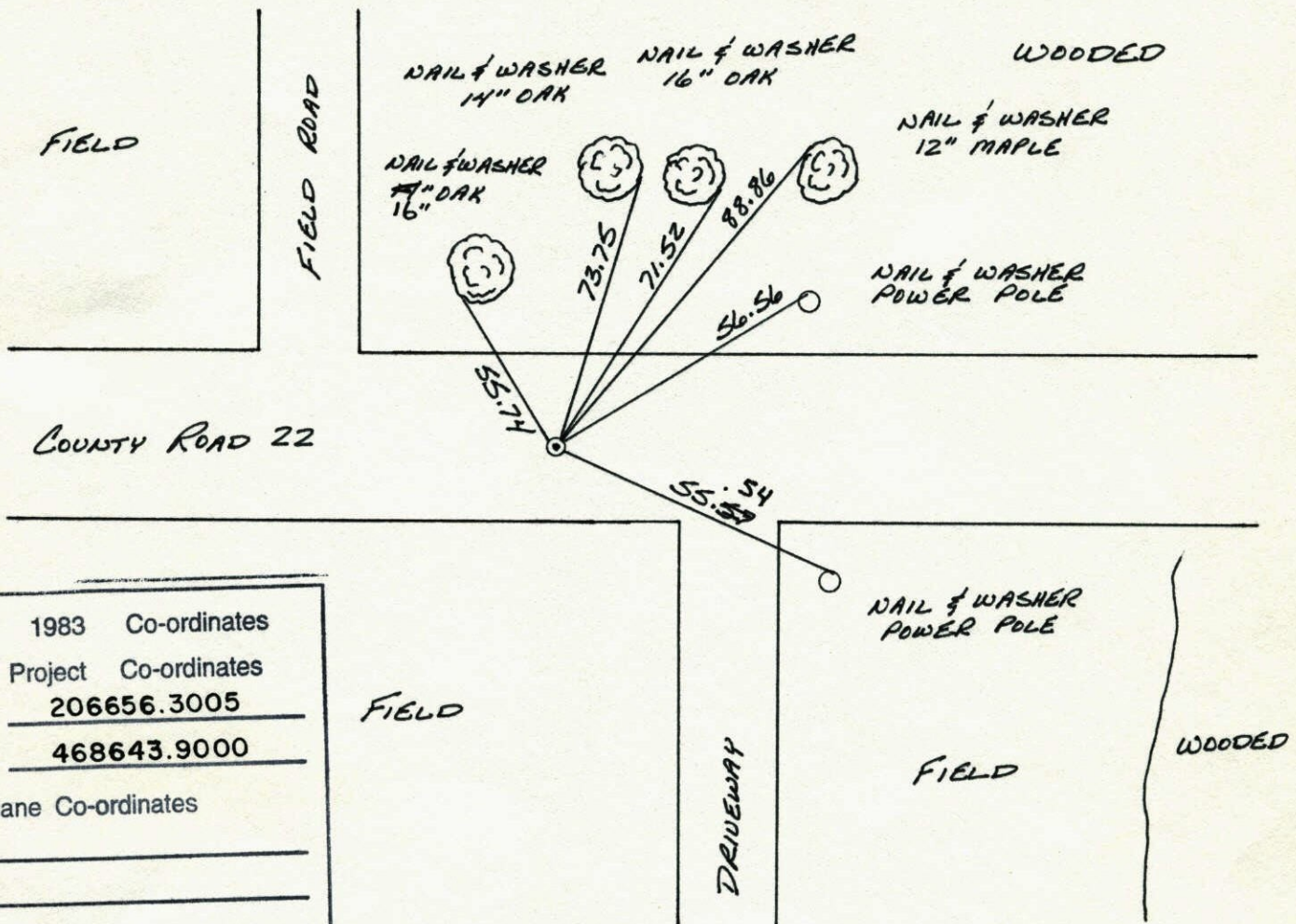
State of Minnesota

NORTHWEST Corner of Sec. 30 Township 33 Range 24

I hereby certify that on the 10 day of FEBRUARY, 1960, I found the described corner which was evidenced by CONCRETE MONUMENT

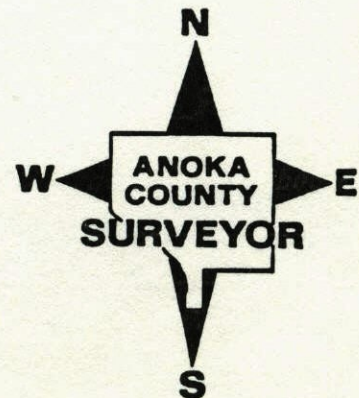
and I further certify that to perpetuate the location of said corner, I did, at the exact location thereof, place a permanent marker consisting of CAST IRON MONUMENT ON TOP OF THE CONCRETE MONUMENT

which reference or witness monuments are located in the manner following:



N.A.D.	1983	Co-ordinates
County Project	Co-ordinates	
Northing	<u>206656.3005</u>	
Easting	<u>468643.9000</u>	
State Plane Co-ordinates		
Y	_____	
X	_____	
Date	_____	

Revised date	Revised date	Revised date
6-27-85		
8-29-88		
5-27-97		
2-15-01		



NW
~~SW~~ Corn. Sec. 19 30

T 33, R24

May 1958

(b)

(Broken Mon.)

■ — Conc. Mon.
Beat Spike

(check with Co. Hwy.
Eng.)