

# CERTIFICATE OF LOCATION OF GOVERNMENT CORNER

County of Anoka

State of Minnesota

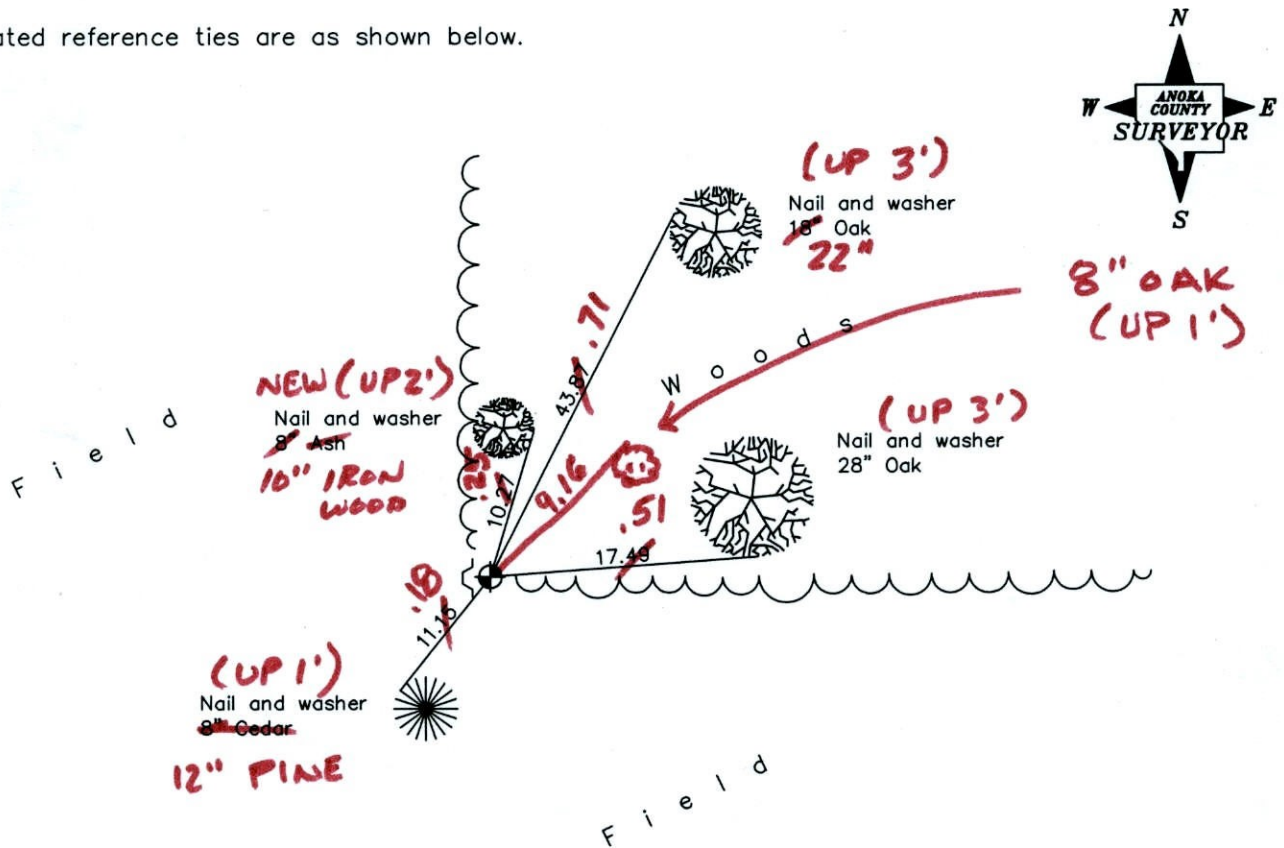
West 1/4 Corner of Sec. 30 Township 33 Range 24

On the 2nd day of October, 1963, the described corner was evidenced by a concrete monument

and to perpetuate the location of said corner, at the exact location thereof, a permanent marker was placed consisting of a cast iron monument with a sign and post on the west side

AND on the \_\_\_ day of \_\_\_\_\_, \_\_\_\_\_, said permanent marker was \_\_\_\_\_

Updated reference ties are as shown below.



**1-24-12  
BK-55  
TAPED**

Revised date
7/06/89
7/07/97
3/12/02

N.A.D. 1983 Coordinates (1996 Adjustment)	
County Project Coordinates	
Northing	<u>204022.8445</u>
Easting	<u>468655.0028</u>
Date	<u>3/12/02</u>

I hereby certify that this United States public land survey monument record is correct and complete to the best of my knowledge and belief.

\_\_\_\_\_, Anoka County Surveyor

Minnesota License Number \_\_\_\_\_



# CERTIFICATE OF LOCATION OF GOVERNMENT CORNER

County of Anoka

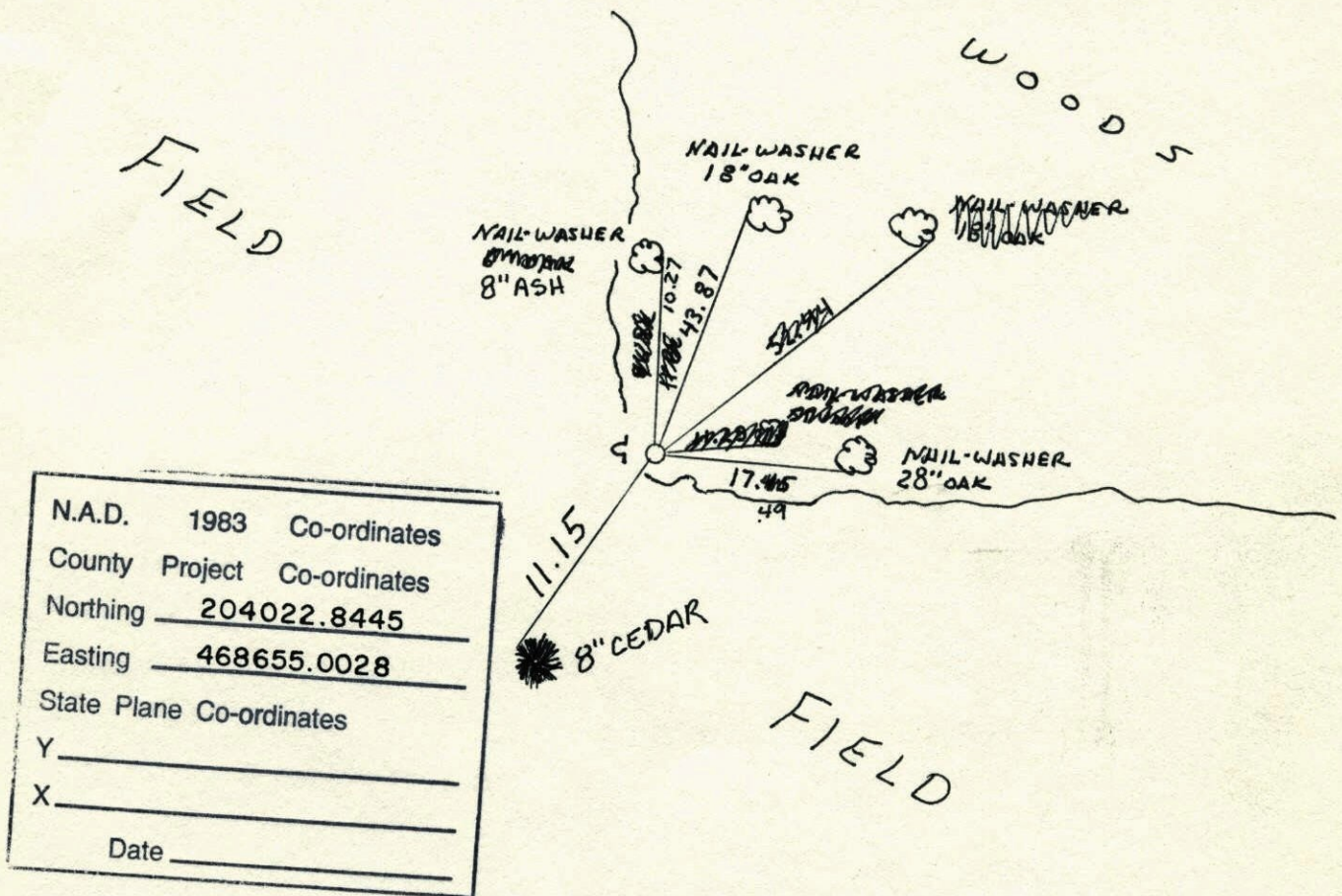
State of Minnesota

WEST QUARTER Corner of Sec. 30 Township 33 Range 24

I hereby certify that on the 2 day of OCT., 1963, I found the described corner which was evidenced by CONCRETE MONUMENT

and I further certify that to perpetuate the location of said corner, I did, at the exact location thereof, place a permanent marker consisting of CAST IRON MONUMENT SIGN AND POST ON WEST SIDE

which reference or witness monuments are located in the manner following:



N.A.D.	1983	Co-ordinates
County	Project	Co-ordinates
Northing	204022.8445	
Easting	468655.0028	
State Plane Co-ordinates		
Y	_____	
X	_____	
Date	_____	

Revised date	Revised date	Revised date
8-17-65	7-7-97	
8-14-73	3-12-02	
7-28-76		
7-25-79		
8-9-82		
7-3-85		
7-6-89		

