

CERTIFICATE OF LOCATION OF GOVERNMENT CORNER

County of Anoka

State of Minnesota

West 1/4 Corner of Sec. 27 Township 33 Range 24

On the 14th day of September, 1967, the described corner was evidenced by area resurvey

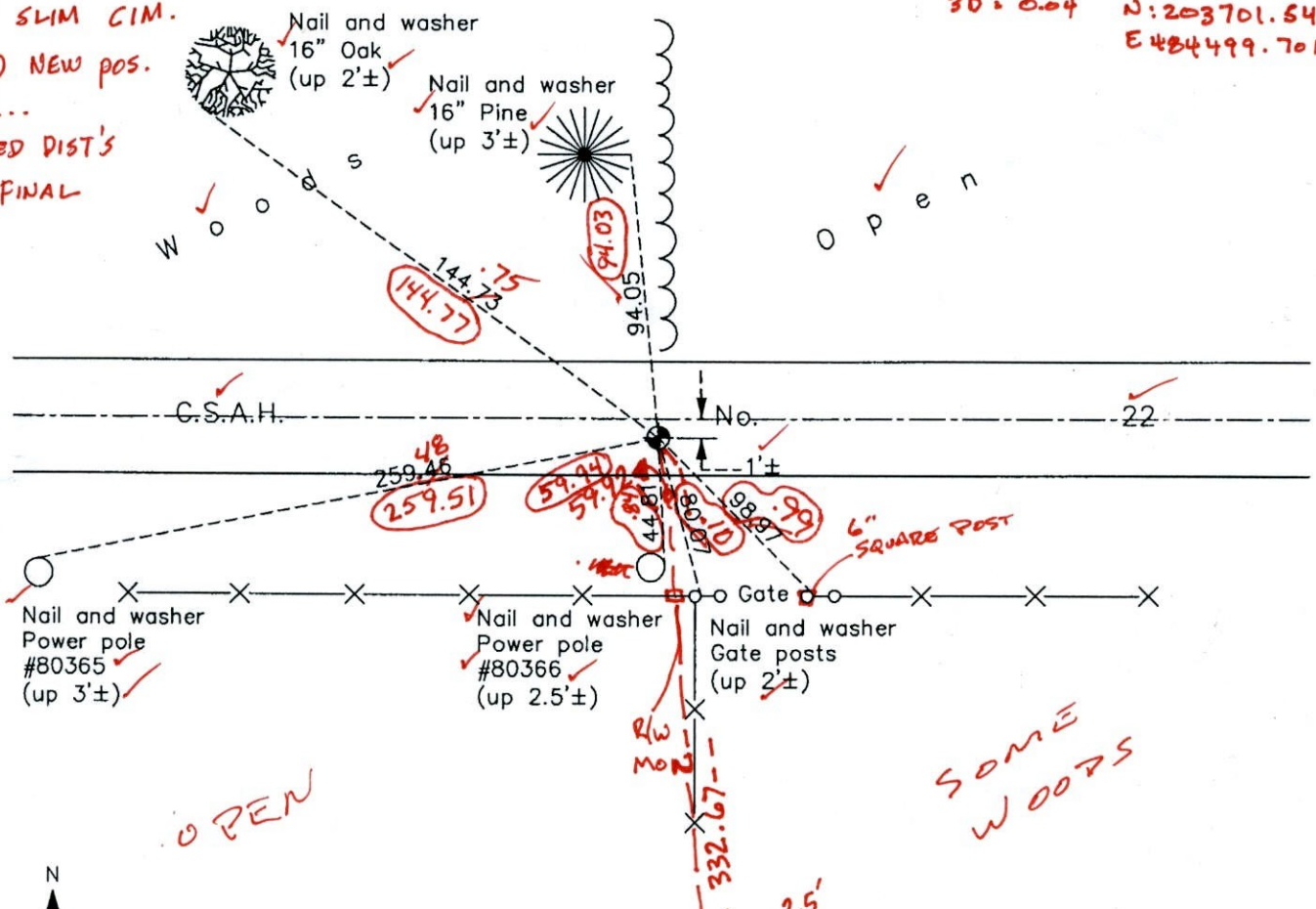
and to perpetuate the location of said corner, at the exact location thereof, a permanent marker was placed consisting of a cast iron monument

AND on the 2nd day of March, 2012, said permanent marker was found and the ties were updated

Updated reference ties are as shown below.

11-18-13 JS SH
SET SLIM CIM.
RETIRED NEW POS.
SET...
CIRCLED DIST'S
ARE FINAL

B-24-13 JS SH
PULLED CIM FOR CONST.
VRS COORD'S BEFORE REMOVAL
30 = 0.04 N: 203701.5417
E 484499.7017



N
W ANOKA COUNTY SURVEYOR E
S

Revision Date
9/21/12

N.A.D. 1983 Coordinates
(1996 Adjustment)

County Project Coordinates	
Northing	203701.5934
Easting	484499.7497
Date	2/27/01

I hereby certify that this United States public land survey monument record is correct and complete to the best of my knowledge and belief.

Larry D. Hoium Date 9/21/12
Larry D. Hoium, Anoka County Surveyor
Minnesota License Number 18165

16" OAK

CERTIFICATE OF LOCATION OF GOVERNMENT CORNER

County of Anoka

State of Minnesota

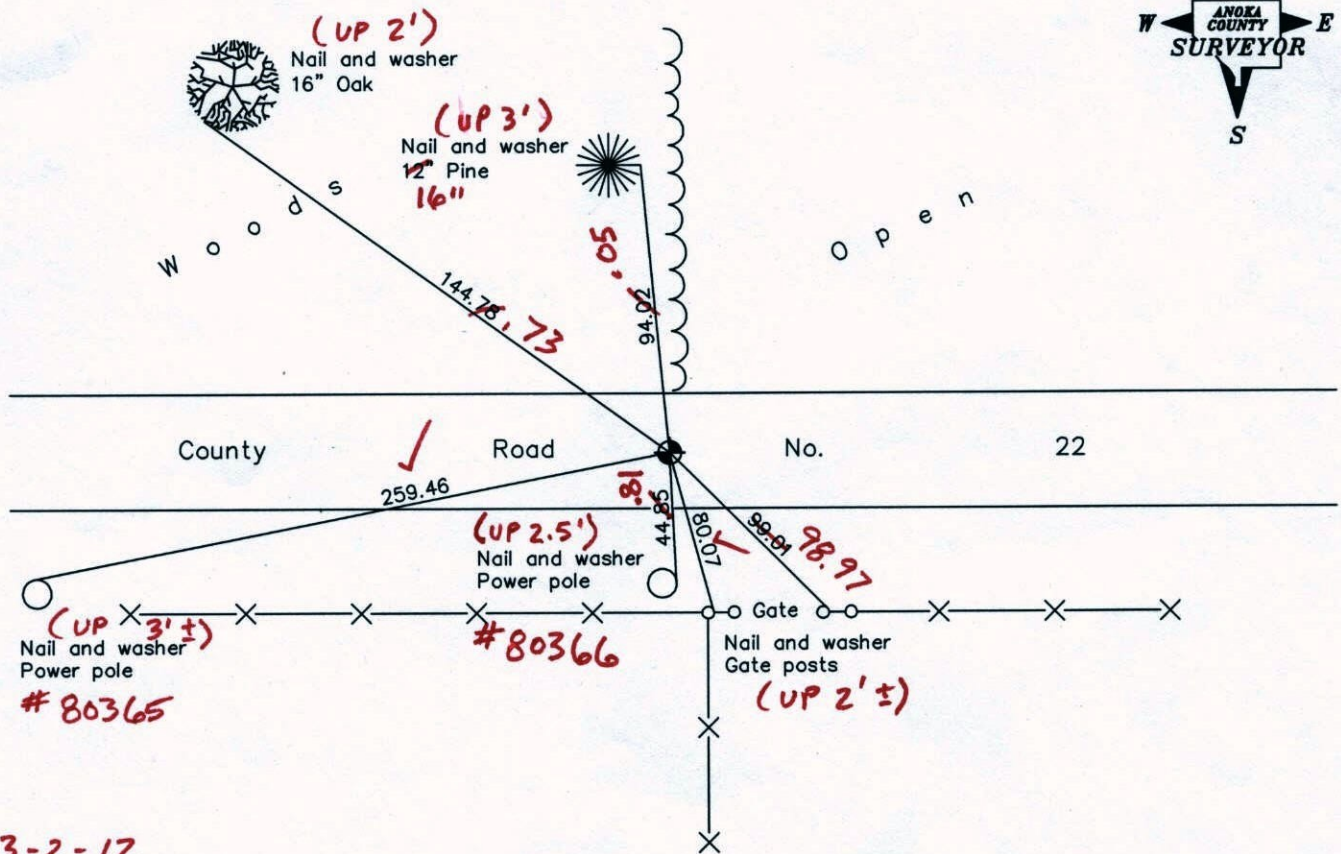
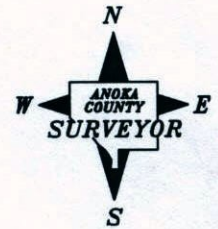
West 1/4 Corner of Sec. 27 Township 33 Range 24

On the 14th day of September, 1967, the described corner was evidenced by area resurvey

and to perpetuate the location of said corner, at the exact location thereof, a permanent marker was placed consisting of a cast iron monument (MON. 1' SOUTH OF E)

AND on the ___ day of _____, _____, said permanent marker was _____

Updated reference ties are as shown below.



3-2-12
BK-55
T/T-URS
Revised date

1/28/92
6/13/97
2/27/01

N.A.D. 1983 Coordinates (1996 Adjustment)	
County Project Coordinates	
Northing	<u>203701.5934</u>
Easting	<u>484499.7497</u>
Date	<u>2/27/01</u>

I hereby certify that this United States public land survey monument record is correct and complete to the best of my knowledge and belief.

_____ Date _____

_____, Anoka County Surveyor

Minnesota License Number _____

VRS 3D = 0.04

N = 203701.5550

E = 484499.7297

CERTIFICATE OF LOCATION OF GOVERNMENT CORNER

County of Anoka

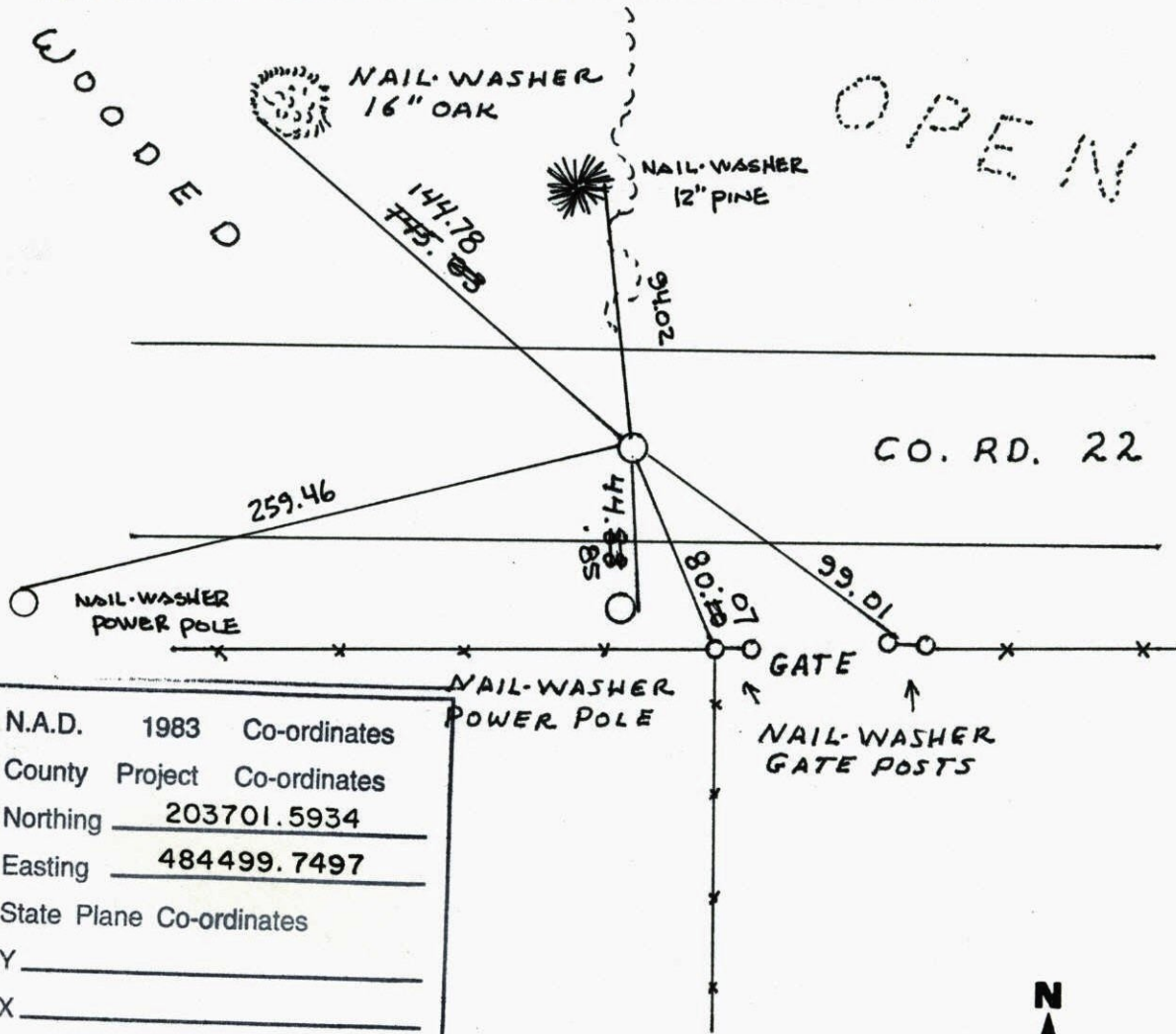
State of Minnesota

WEST 1/4 Corner of Sec. 27 Township 33 Range 24

I hereby certify that on the 14 day of SEPT, 1967, I found the described corner which was evidenced by AREA SURVEY

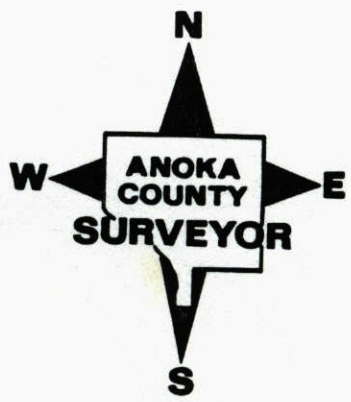
and I further certify that to perpetuate the location of said corner, I did, at the exact location thereof, place a permanent marker consisting of CAST IRON MONUMENT

which reference or witness monuments are located in the manner following:



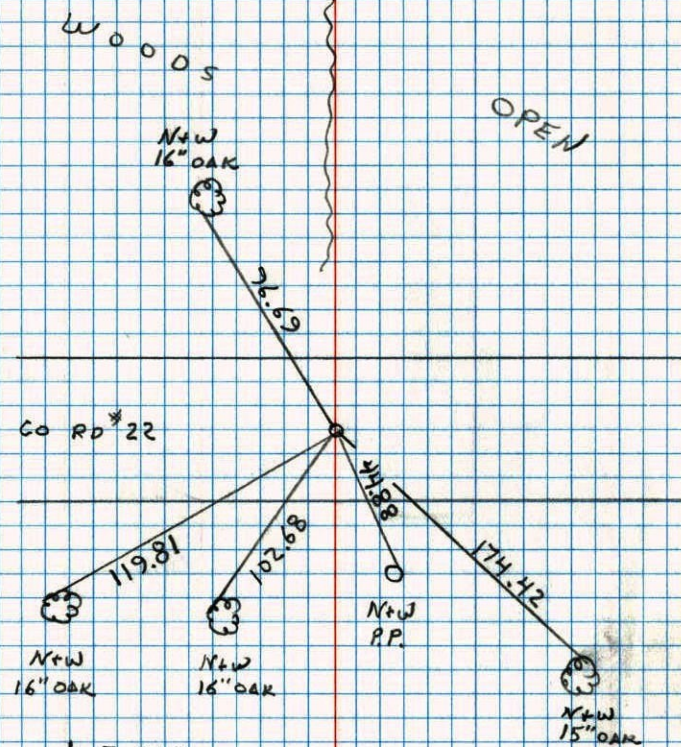
N.A.D.	1983	Co-ordinates
County	Project	Co-ordinates
Northing		<u>203701.5934</u>
Easting		<u>484499.7497</u>
State Plane Co-ordinates		
Y _____		
X _____		

Date	Revised date	Revised date	Revised date
	8-24-90		
	1-28-92		
	6-13-97		
	2-27-01		



WEST 1/4 COR. SEC. 27 T33 R24

RETIED AFTER SETTING CAST IRON
C.I. FLUSH 1' SOUTH OF E.

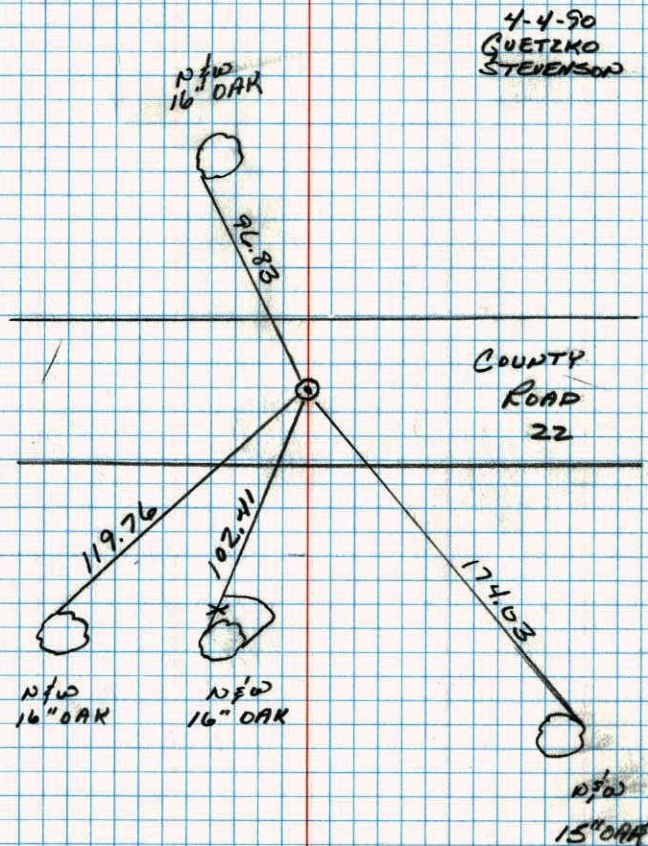


8-24-90
N. LARSON
B. KLENZ
MAZ
DK

RESET
6-5-90

WEST 1/4 CORNER SEC 27 T33 R24

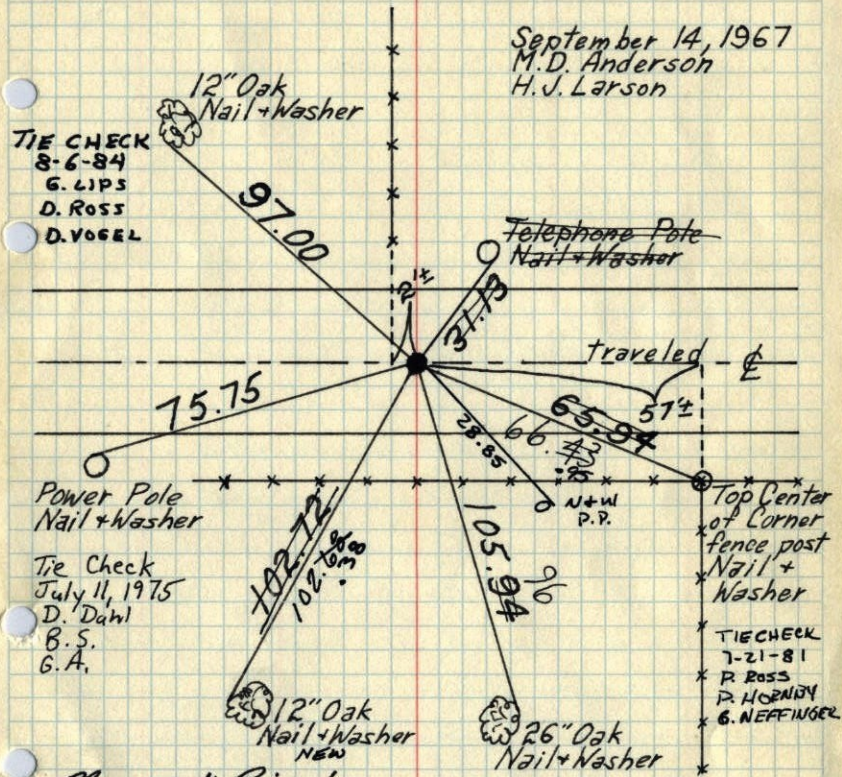
TIED AND REMOVED CAST IRON FOR
CONSTRUCTION



4-4-90
QUETZKO
STEVENS

W 1/4 Cor. Sec. 27-T33-R24

Set Cast Iron Monument flush in blacktop from area resurvey



Monument Raised August 29, 1972

B. Olson
J. Boettcher
R. Brien

TIE CHECK 7-11-78
D. DAHL
B. STEPHENS
M. KISROW

Tie Check July 26, 1971
R. Brien
J. Boettcher
B. Olson

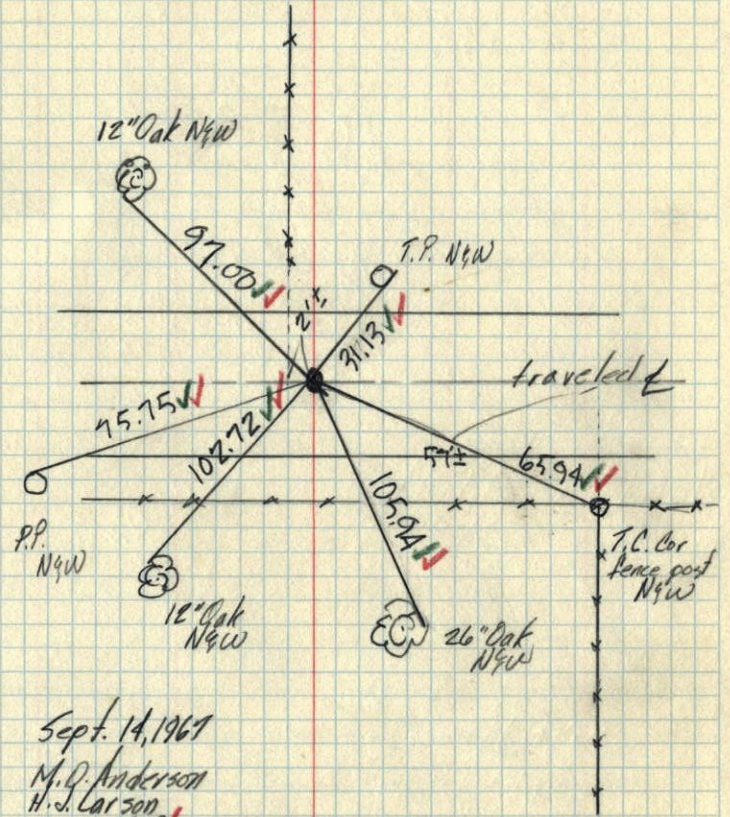
Tie Check July 3, 1968
H. Larson
R. Olson
P. Pieh

TEMPERATURE CORRECTED AND HORIZONTALLY TAPED MEASUREMENTS

ROLAND W. ANDERSON
COUNTY SURVEYOR
ANOKA COUNTY, MINNESOTA

West 1/4 Cor. Sec. 27-T33-R24

Set Cast Iron Monument from area resurvey set C.I. flush in Blacktop



Sept. 14, 1967

M.D. Anderson
H.J. Larson
temp. 72°
tape #51