

# CERTIFICATE OF LOCATION OF GOVERNMENT CORNER

County of Anoka

State of Minnesota

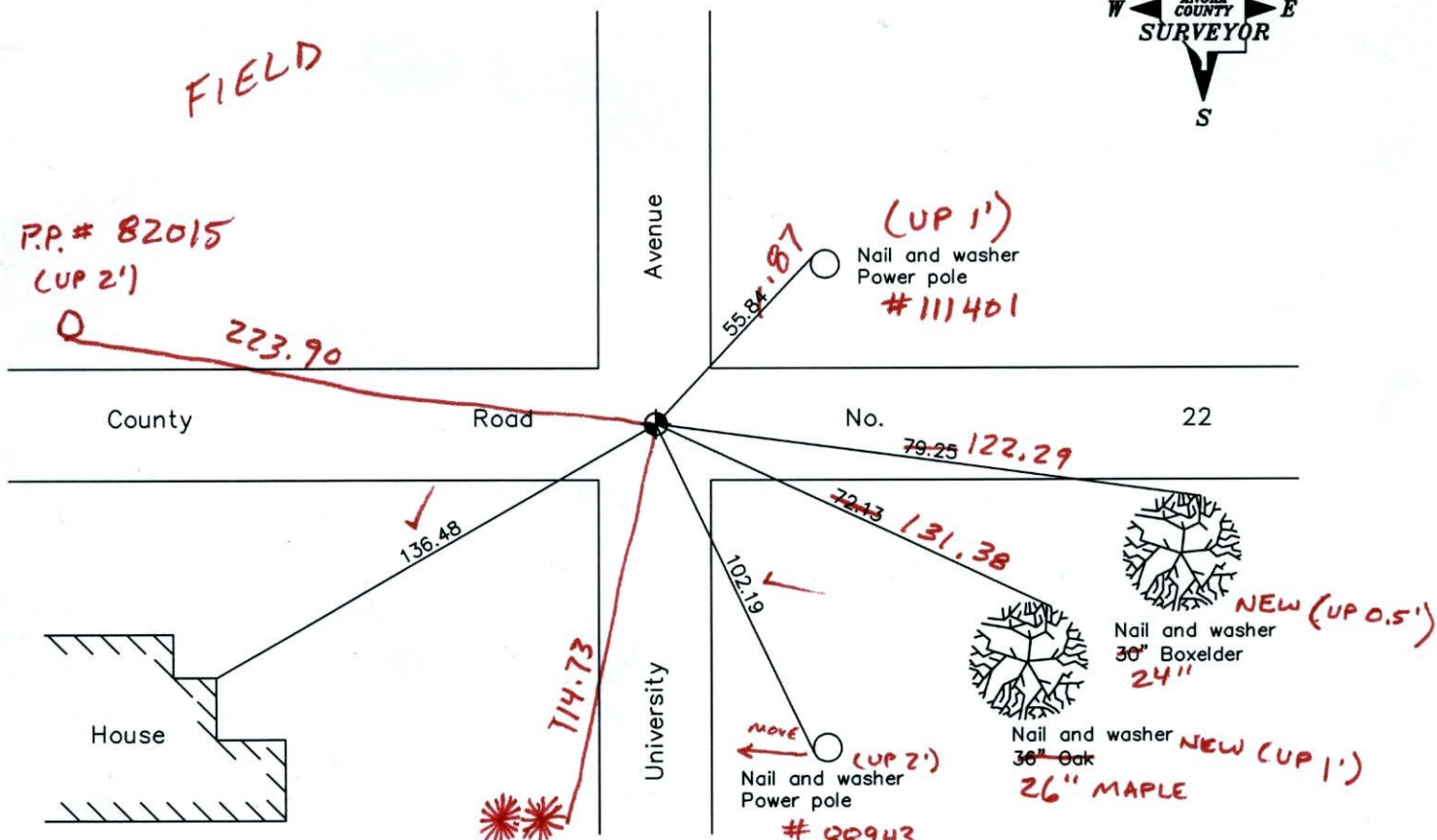
East  $\frac{1}{4}$  Corner of Sec. 25 Township 33 Range 24

On the 15th day of July, 1960, the described corner was evidenced by a 2" iron pipe

and to perpetuate the location of said corner, at the exact location thereof, a permanent marker was placed consisting of a cast iron monument (2'± N. OF E)

AND on the \_\_\_ day of \_\_\_\_\_, \_\_\_\_\_, said permanent marker was \_\_\_\_\_

Updated reference ties are as shown below.



2-10-12  
BK-SS  
T/T-VRS

Revised date

6/29/92
6/04/97
6/20/00

12" TWIN PINE  
(UP 2')

N.A.D. 1983 Coordinates  
(1996 Adjustment)

County Project Coordinates

Northing	<u>203798.5864</u>
Easting	<u>500248.8681</u>
Date	<u>6/11/01</u>

I hereby certify that this United States public land survey monument record is correct and complete to the best of my knowledge and belief.

\_\_\_\_\_  
\_\_\_\_\_, Anoka County Surveyor  
Minnesota License Number \_\_\_\_\_

VRS 3D = 0.04

N = 203798, 5010

E = 500248.8666



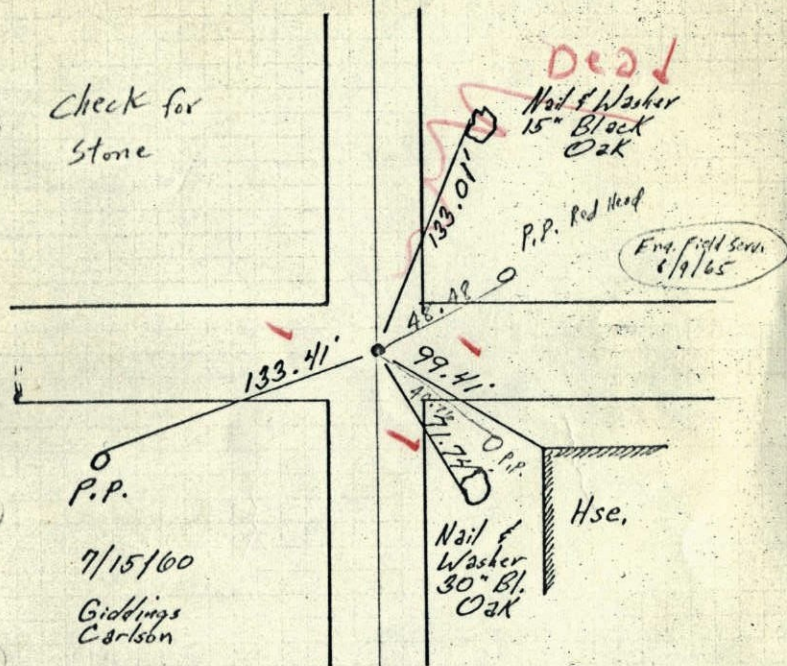






54

E 1/4 Cor. Sec 25 - T33 - R24  
2" Iron Pipe  
down 1.0ft.



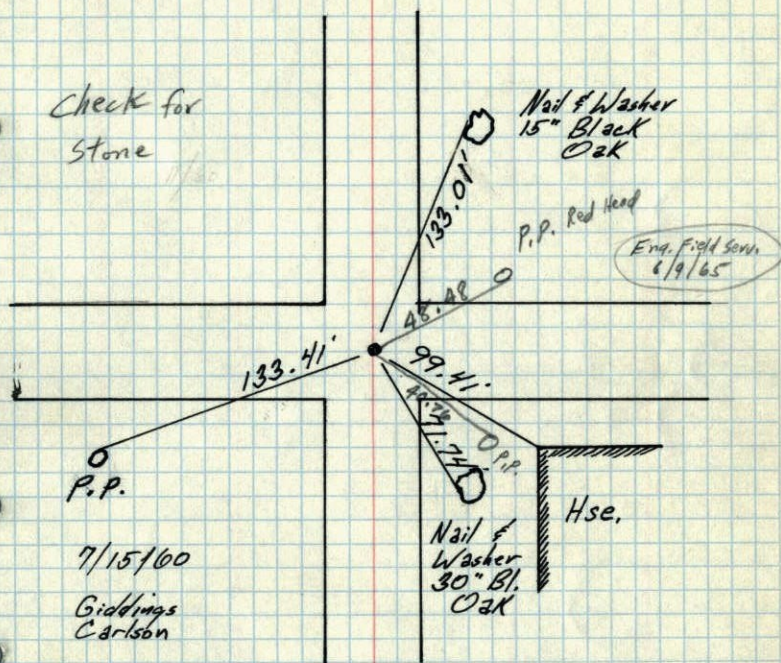
Set C.I.  
+ Took New  
Ties July 2, 1968  
H. Larson  
R. Olson  
P. Pich

TEMPERATURE CORRECTED  
AND HORIZONTALLY  
TAPED MEASUREMENTS

ROLAND W. ANDERSON  
COUNTY SURVEYOR  
ANOKA COUNTY, MINNESOTA

54

E 1/4 Cor. Sec 25 - T33 - R24  
2" Iron Pipe  
down 1.0ft.



TEMPERATURE CORRECTED  
AND HORIZONTALLY  
TAPED MEASUREMENTS

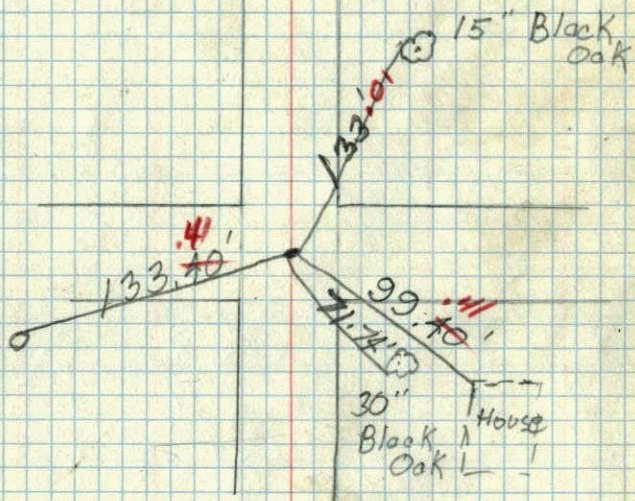
ROLAND W. ANDERSON  
COUNTY SURVEYOR  
ANOKA COUNTY, MINNESOTA



E $\frac{1}{4}$  Corn Sec. 25, T.33, R.2A.

(Oak Grove)

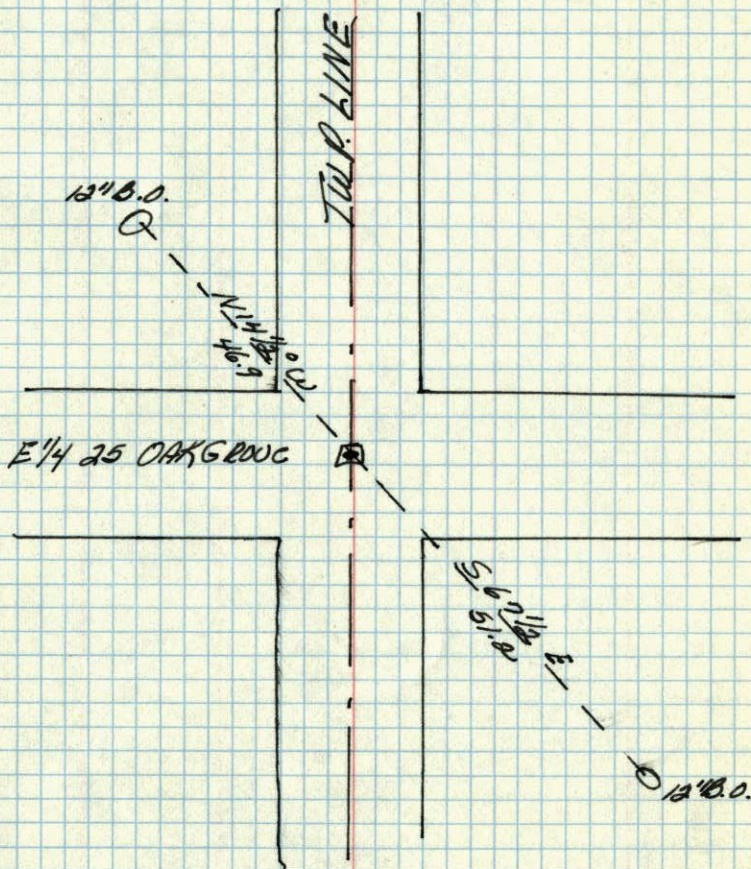
2" Iron pipe 1' below surface



9/20/60

Temp 82°  
July 15, 1960  
Giddings  
Carlson

E $\frac{1}{4}$  corner of Sec. 25 Oak Grove



ANAKO Co. Hwy. Dept.