

CERTIFICATE OF LOCATION OF GOVERNMENT CORNER

County of Anoka

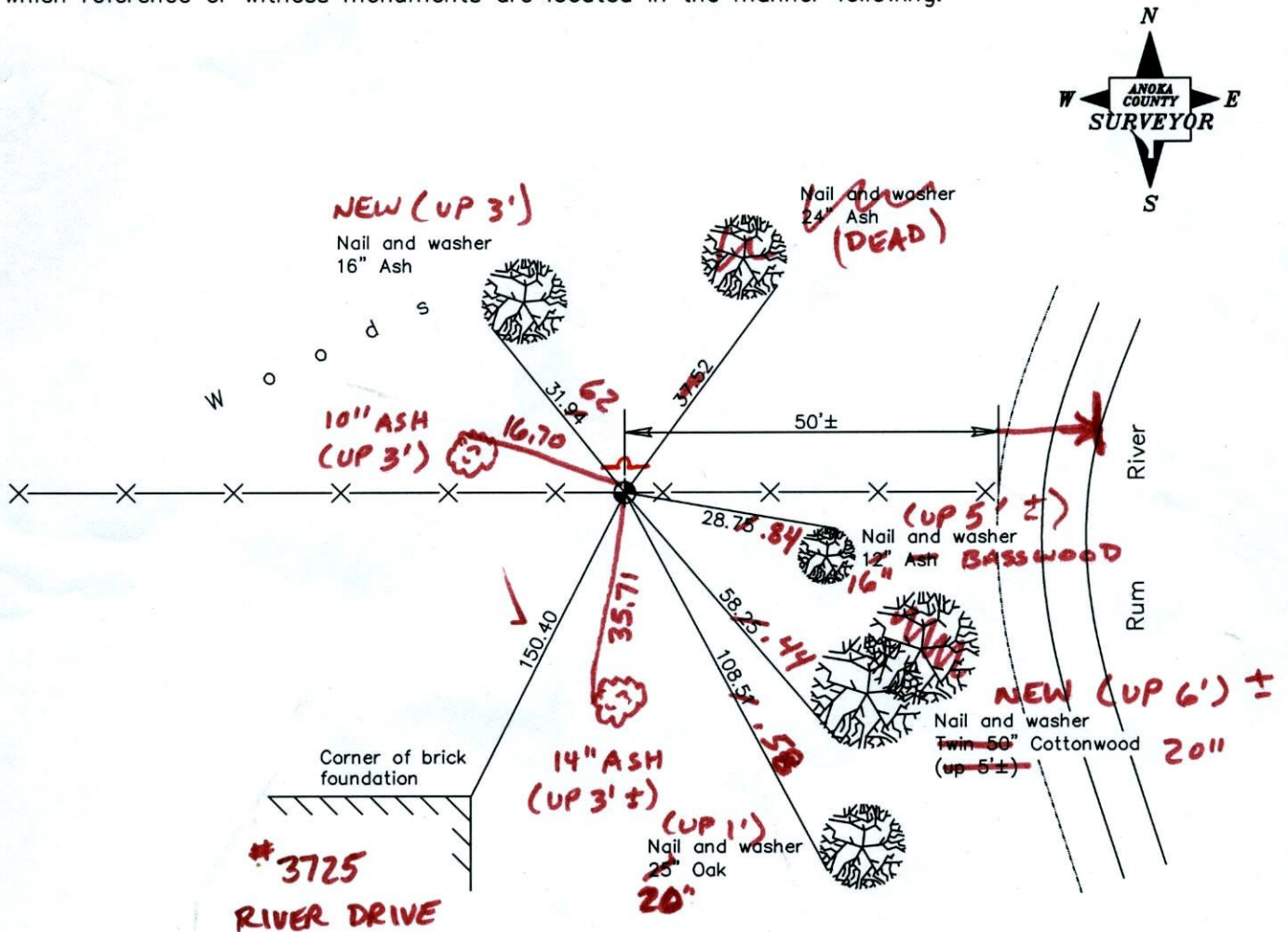
State of Minnesota

Meander Corner of Sec. 5 Township 33 Range 24
 (on north line of section west of Rum River)

I hereby certify that on the 23rd day of May, 1961, I found the described corner which was evidenced by a 2" iron pipe

and I further certify that to perpetuate the location of said corner, I did, at the exact location thereof, place a permanent marker consisting of a cast iron monument (DOWN 0.2'±)
(COULD USE SIGN & POST) SIGN & POST ADDED FACING SOUTH (4/2/12)

which reference or witness monuments are located in the manner following:



Revised date

7/10/92
6/25/97
4/26/01

1-18-12
 BK-SS
 TAPED

N.A.D. 1983 Coordinates
 (1996 adjustment)

County Project Coordinates	
Northing	227462.1126
Easting	476581.2748

Date 4/26/01

CERTIFICATE OF LOCATION OF GOVERNMENT CORNER

County of Anoka State of Minnesota

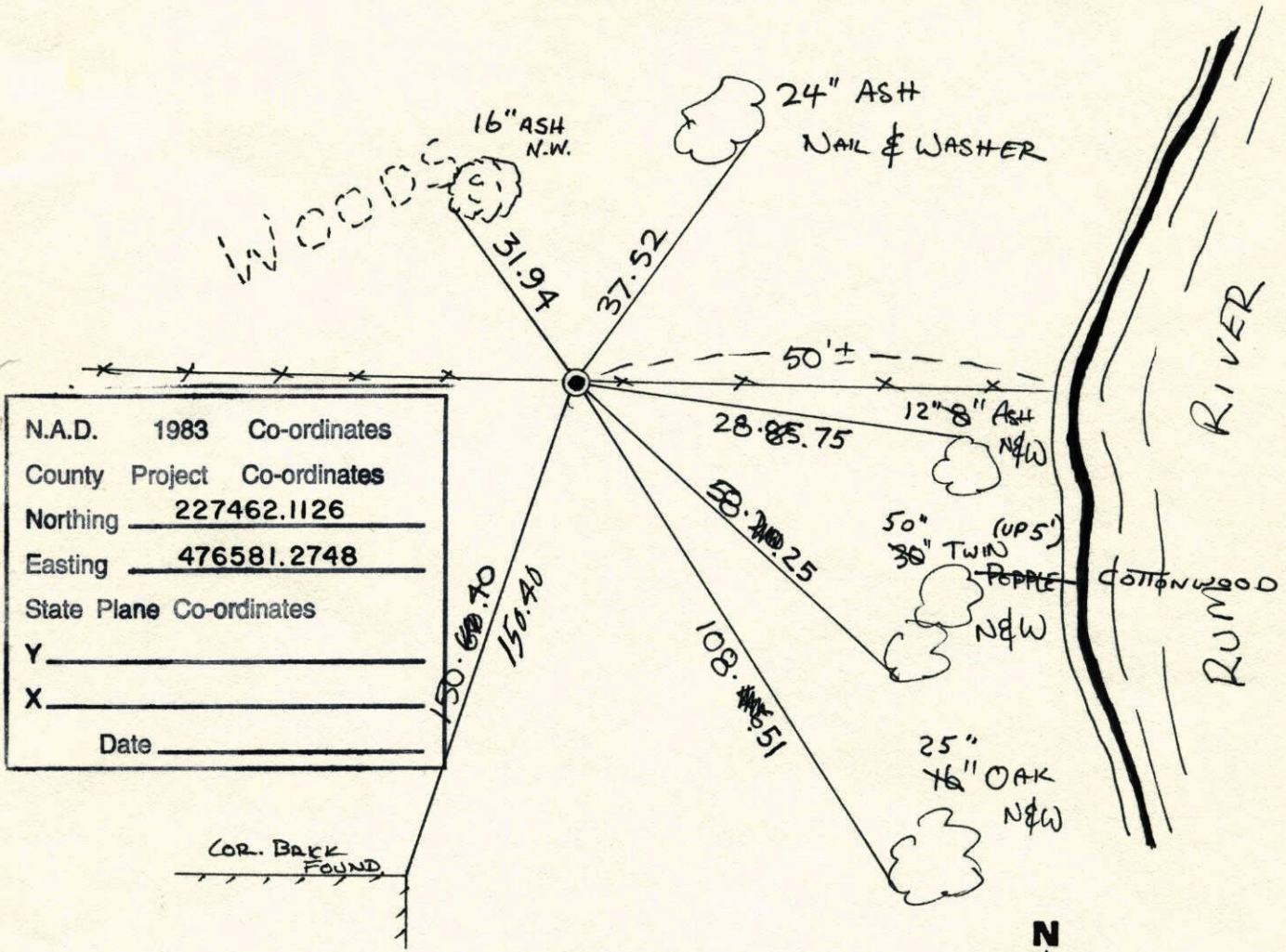
MEANDER
ON NTH LINE ON WEST
SIDE OF RUM RIVER

Corner of Sec. 5 Township 33 Range 24

I hereby certify that on the 23 day of MAY, 1961, I found the described corner which was evidenced by 2" IRON PIPE

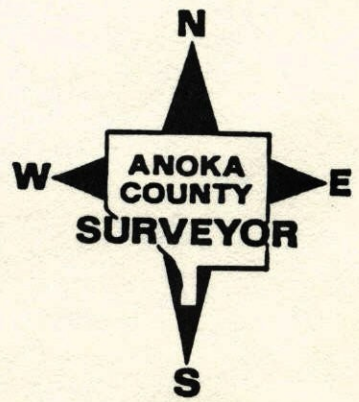
and I further certify that to perpetuate the location of said corner, I did, at the exact location thereof, place a permanent marker consisting of CAST IRON MONUMENT

which reference or witness monuments are located in the manner following:



N.A.D.	1983	Co-ordinates
County	Project	Co-ordinates
Northing		<u>227462.1126</u>
Easting		<u>476581.2748</u>
State Plane Co-ordinates		
Y		_____
X		_____
Date _____		

Revised date	Revised date	Revised date
8-14-84		
7-10-92		
6-25-97		
4-26-01		



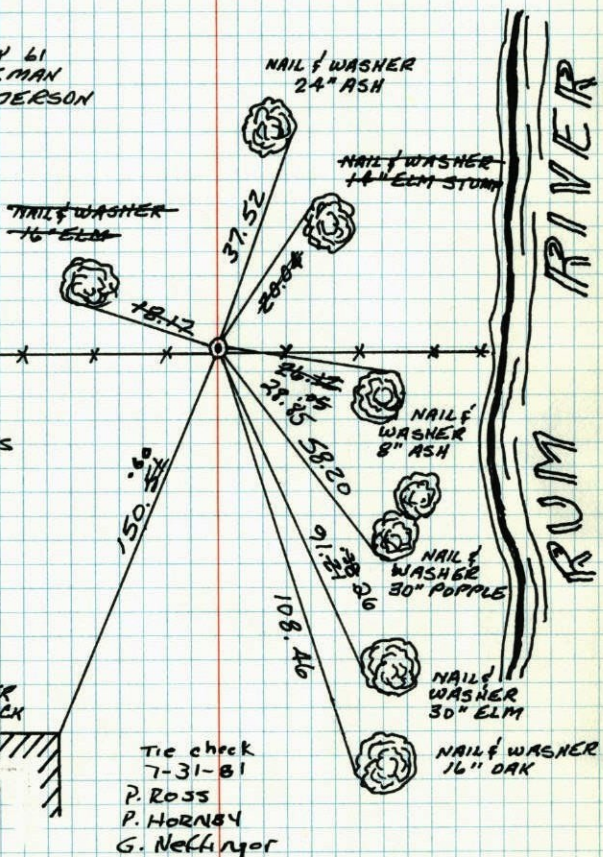
MEANDER ON NORTH LINE OF
SECTION 5-T33-R24

ON WEST SIDE OF RUM RIVER

CAST IRON MONUMENT SET IN PLACE OF FOUND
2" IRON PIPE (TIES BY H. A. CARTWRIGHT)



23 MAY 61
R. FREEMAN
M. D. ANDERSON



TIE CHECK
7-17-78
D. DAHL
B. STEPHENS

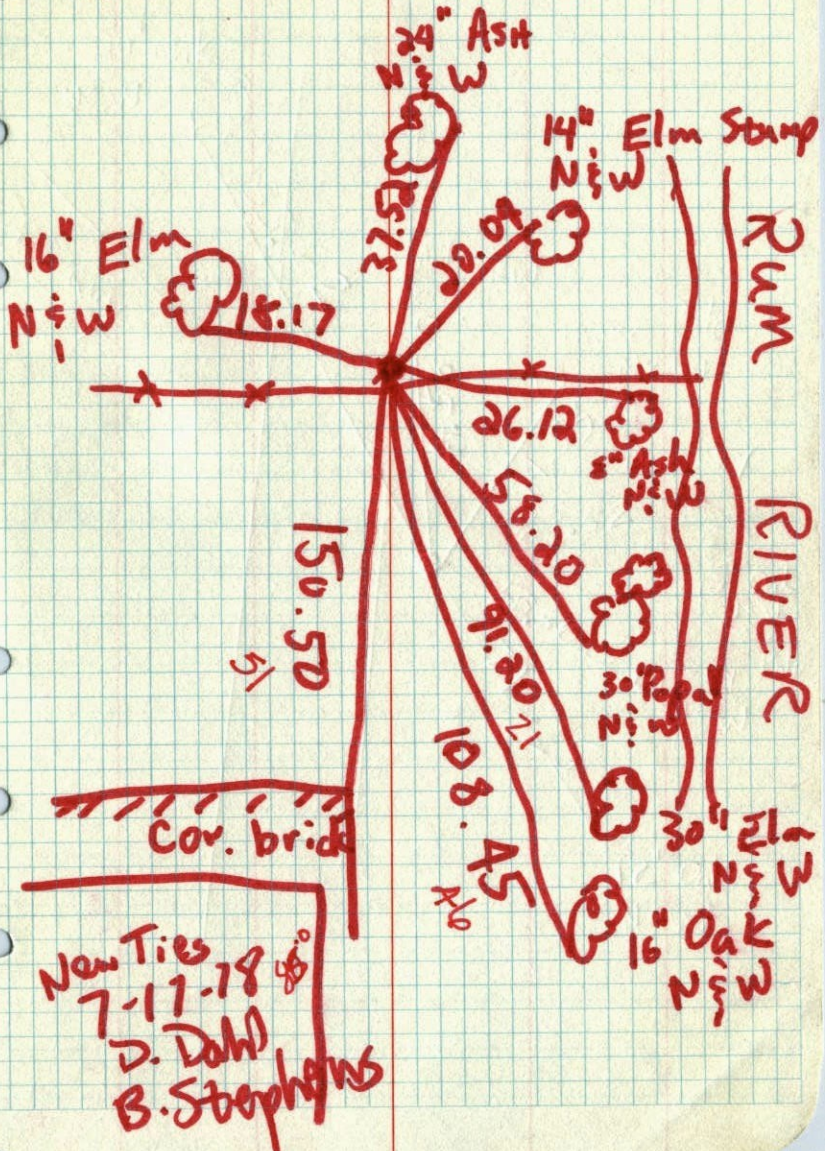
Tie check
8-14-84
G. Lips
D. Ross
D. Vogel
#9 82°
CORNER
BRICK

Tie check
7-31-81
P. ROSS
P. HORNBY
G. Neckinger

TEMPERATURE CORRECTED
AND HORIZONTALLY
TAPED MEASUREMENTS

ROLAND W. ANDERSON
COUNTY SURVEYOR
ANOKA COUNTY, MINNESOTA

M.C. on N Line Sec 5
W. side of Rum



New Ties
7-17-78
D. Dahl
B. Stephens

W.C.
M.C. ON N. LINE SEC. 5-33-24

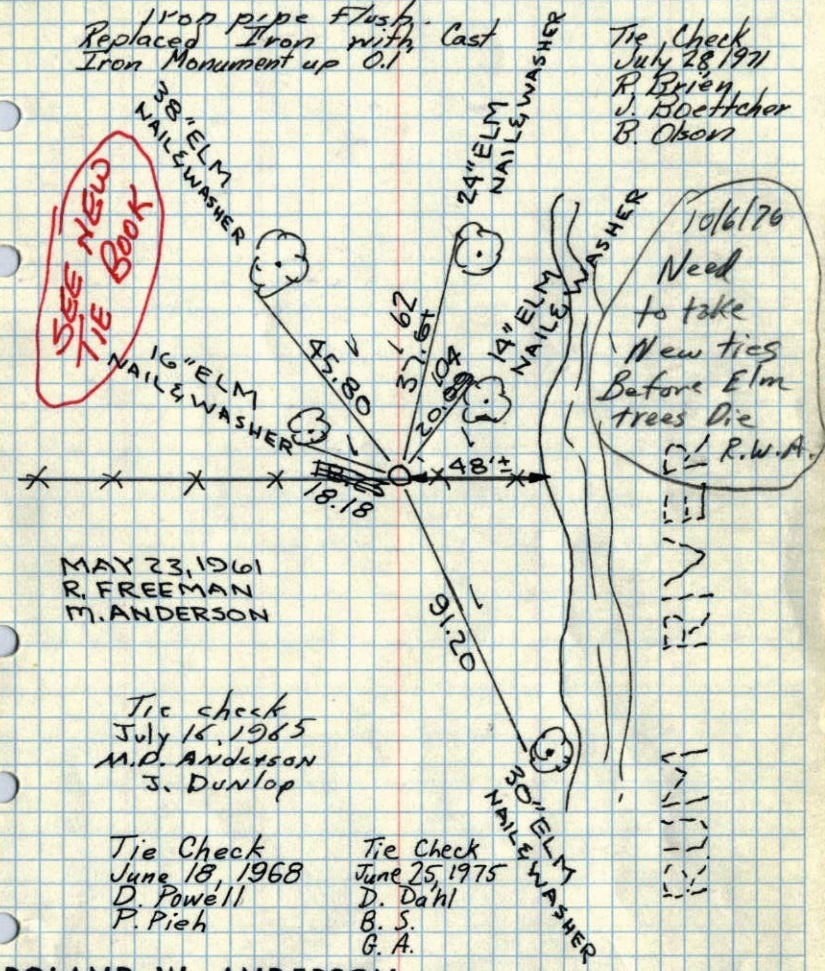
ON W. SIDE OF RUM RIVER

TIES FIT 2" IRON (TIES BY H.A. CARTWRIGHT)

Iron pipe flush
Replaced Iron with Cast
Iron Monument up 0.1

Tie Check
July 28, 1971
R. Brien
J. Boettcher
B. Olson

SEE NEW
TIE BOOK



10/6/76
Need
to take
New ties
Before Elm
trees die
R.W.A.

MAY 23, 1961
R. FREEMAN
M. ANDERSON

Tie check
July 16, 1965
M.D. Anderson
J. Dunlop

Tie Check
June 18, 1968
D. Powell
P. Pieh

Tie Check
June 25, 1975
D. Dahl
B. S.
G. A.

ROLAND W. ANDERSON
COUNTY SURVEYOR
ANOKA COUNTY, MINNESOTA

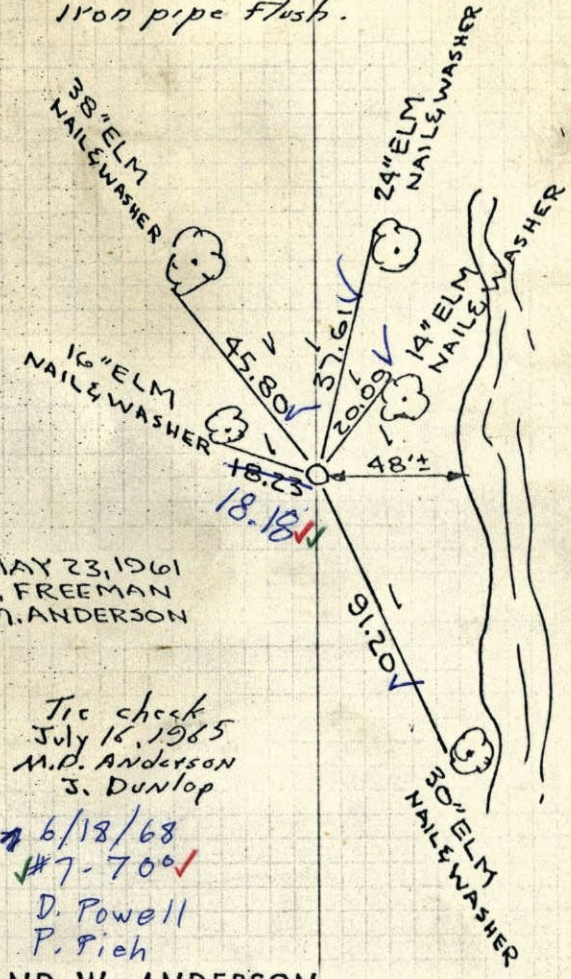
**TEMPERATURE CORRECTED
AND HORIZONTALLY
TAPED MEASUREMENTS**

M.C. ON N. LINE SEC. 5-33-24

ON W. SIDE OF RUM RIVER

TIES FIT 2" IRON (TIES BY H.A. CARTWRIGHT)

Iron pipe flush.



MAY 23, 1961
R. FREEMAN
M. ANDERSON

Tie check
July 16, 1965
M.D. Anderson
J. Dunlop

6/18/68
#7-700
D. Powell
P. Pieh

ROLAND W. ANDERSON
COUNTY SURVEYOR
ANOKA COUNTY, MINNESOTA

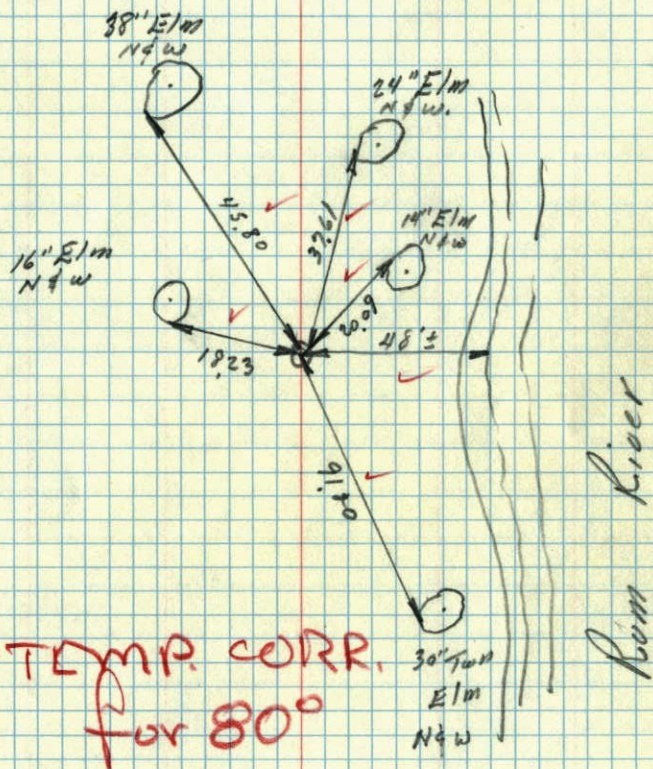
**TEMPERATURE CORRECTED
AND HORIZONTALLY
TAPED MEASUREMENTS**

23 May 1961
Freeman Anderson
+80

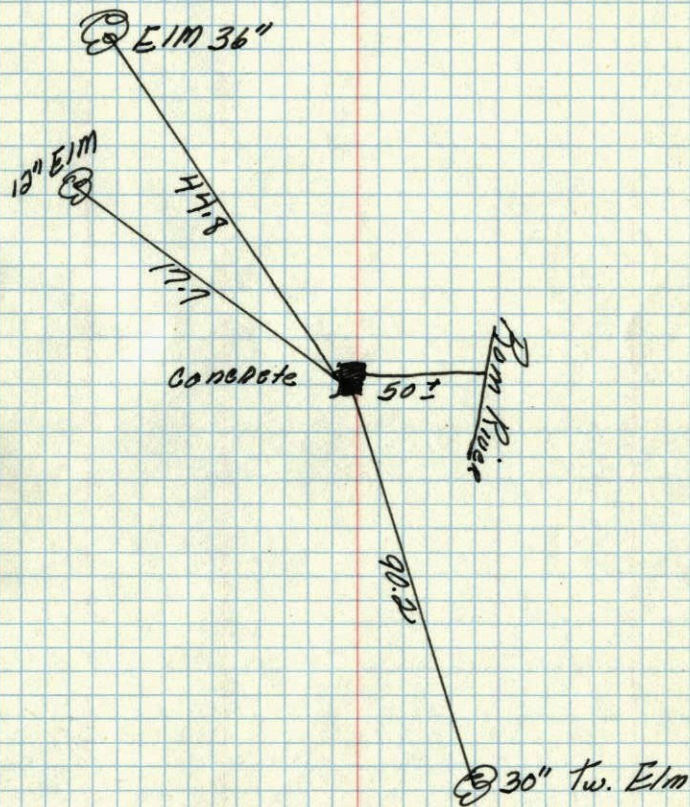
M.C. on N. Line Sec 5-33-24

Oak Grove: w Side River

Found 2" iron instead Conc Mon as
said By H. H. Cartwright. Don't
Believe Conc Mon was Ever set.
Ties fit good.



M.C. cor. on N. line Sec. 5+33 R24
Concrete Mon.



Sept. 30, 1946
Cartwright