

CERTIFICATE OF LOCATION OF GOVERNMENT CORNER

County of Anoka State of Minnesota

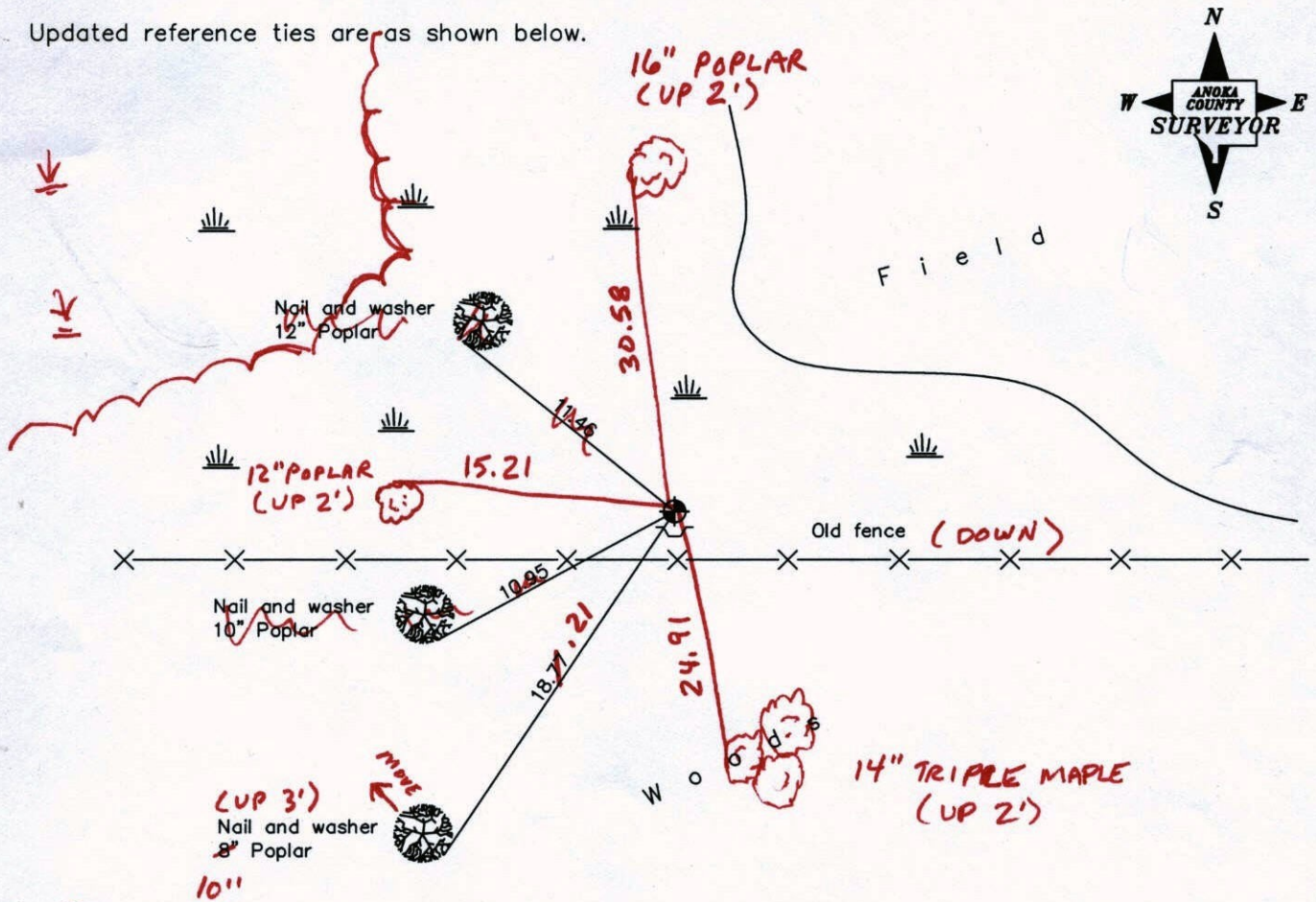
Witness Corner of Sec. 26 Township 33 Range 24
 (on the south line of SE1/4)

On the 19th day of May, 1976, the described corner was evidenced by area resurvey

and to perpetuate the location of said corner, at the exact location thereof, a permanent marker was placed consisting of a cast iron monument with a sign and post on the south side

AND on the ___ day of _____, _____, said permanent marker was _____

Updated reference ties are as shown below.



2-16-12
BK=55
TAPED

Revised date
8/17/84
7/31/87
7/08/97

N.A.D. 1983 Coordinates (1996 Adjustment)	
County Project Coordinates	
Northing	<u>201110.9990</u>
Easting	<u>493236.7001</u>
Date	<u>3/07/02</u>

I hereby certify that this United States public land survey monument record is correct and complete to the best of my knowledge and belief.

_____ Date _____
 _____, Anoka County Surveyor
 Minnesota License Number _____

CERTIFICATE OF LOCATION OF GOVERNMENT CORNER

County of Anoka

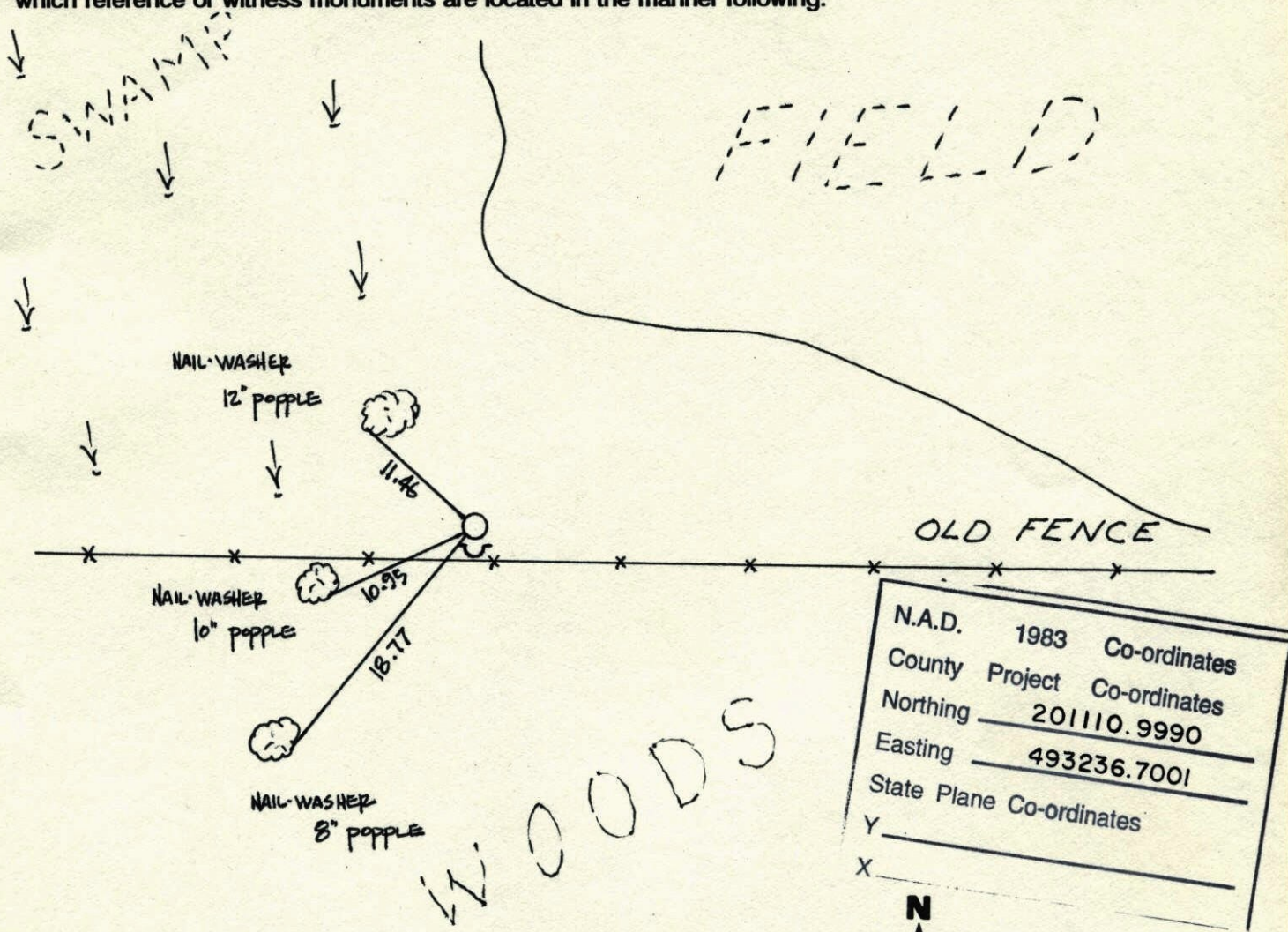
State of Minnesota

WITNESS ON
SOUTH LINE OF Corner of Sec. 26 Township 33 Range 24
THE S.E. QTR.

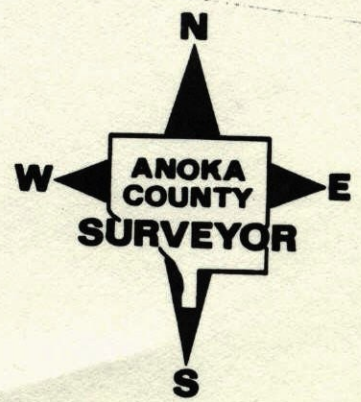
I hereby certify that on the 19TH day of MAY, 19 76, I found the described corner which was evidenced by AREA RESURVEY

and I further certify that to perpetuate the location of said corner, I did, at the exact location thereof, place a permanent marker consisting of CAST IRON MONUMENT
SIGN & POST ON SOUTH SIDE

which reference or witness monuments are located in the manner following:



Revised date	Revised date	Revised date
8-4-78		
7-28-81		
8-17-84		
7-31-87		
7-8-97		

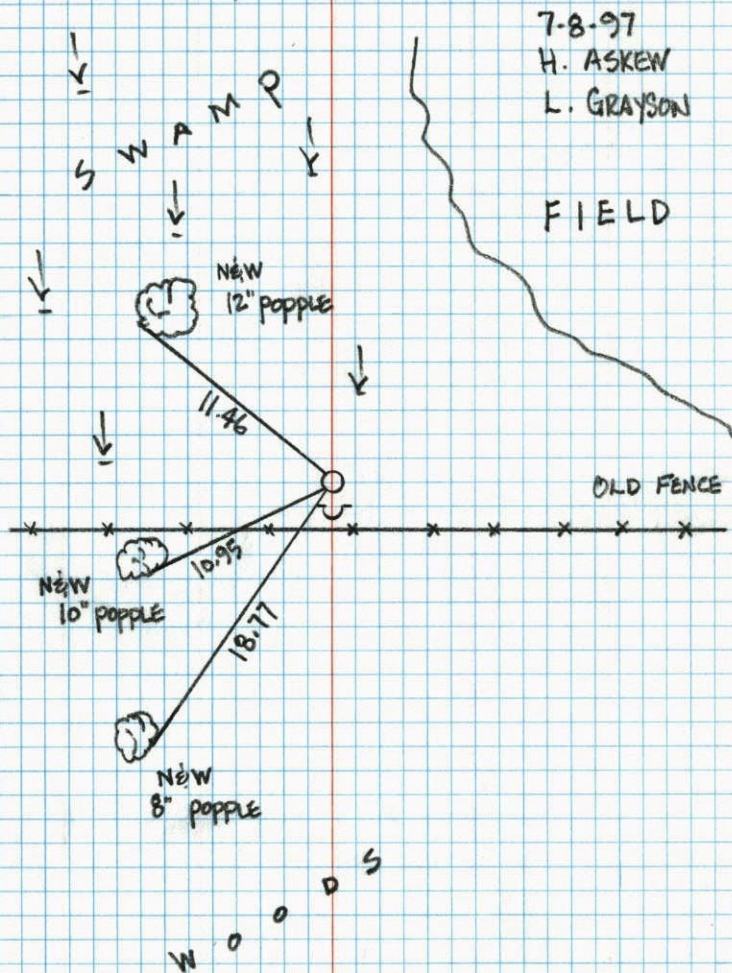


113A

WITNESS ON S. LINE OF S.E. QTR. SEC 26 T33 R24

RETIED CAST IRON MONUMENT

SIGN & POST S. SIDE

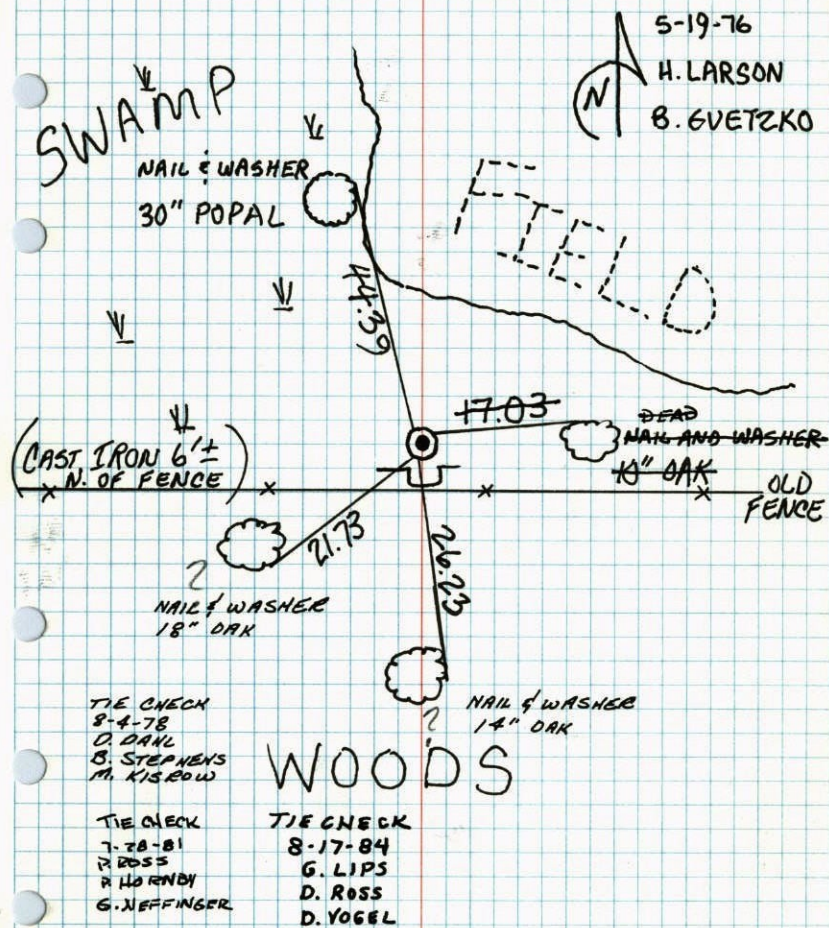


113A

W.C. ON S. LINE OF SE¹/₄ SEC 26 T33 R24

SET CAST IRON MONUMENT FROM AREA RESURVEY.

CAST IRON FLUSH, SIGN AND POST ON SO. SIDE.



TEMPERATURE CORRECTED ROLAND W. ANDERSON
AND HORIZONTALLY COUNTY SURVEYOR
TAPED MEASUREMENTS ANOKA COUNTY, MINNESOTA

W.C. on S. line of SE 1/4 Sec. 26 T33 R24

Set cast iron monument from area

resurvey. c.i. flush sign & post on S. side.

5-19-76
70°
M. Larson
B. Guetzko

