

CERTIFICATE OF LOCATION OF GOVERNMENT CORNER

County of Anoka

State of Minnesota

South 1/4 Corner of Sec. 29 Township 33 Range 24

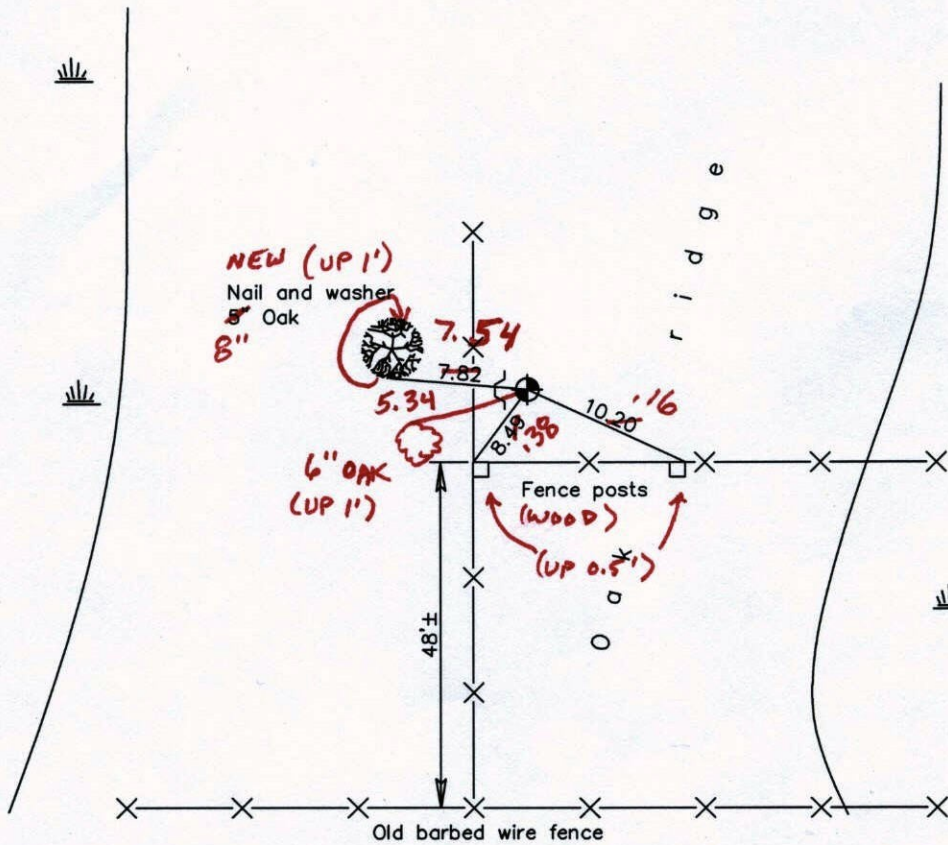
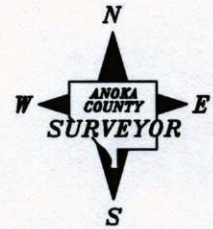
On the 10th day of November, 1965, the described corner was evidenced by a 1" iron pipe from N.C. Hoium ties

and to perpetuate the location of said corner, at the exact location thereof, a permanent marker was placed consisting of a cast iron monument with a sign and post on the west side

COULD USE NEW SIGN (ADDED 3-30-12)

AND on the ___ day of _____, _____, said permanent marker was _____

Updated reference ties are as shown below.



*2-24-12
BK-55
TAPED*

Revised date
5/03/93
7/08/97
3/12/02

N.A.D. 1983 Coordinates (1996 Adjustment)	
County Project Coordinates	
Northing	<u>201227.2077</u>
Easting	<u>476619.0236</u>
Date	<u>3/12/02</u>

I hereby certify that this United States public land survey monument record is correct and complete to the best of my knowledge and belief.

_____, Anoka County Surveyor

Minnesota License Number _____

CERTIFICATE OF LOCATION OF GOVERNMENT CORNER

County of Anoka

State of Minnesota

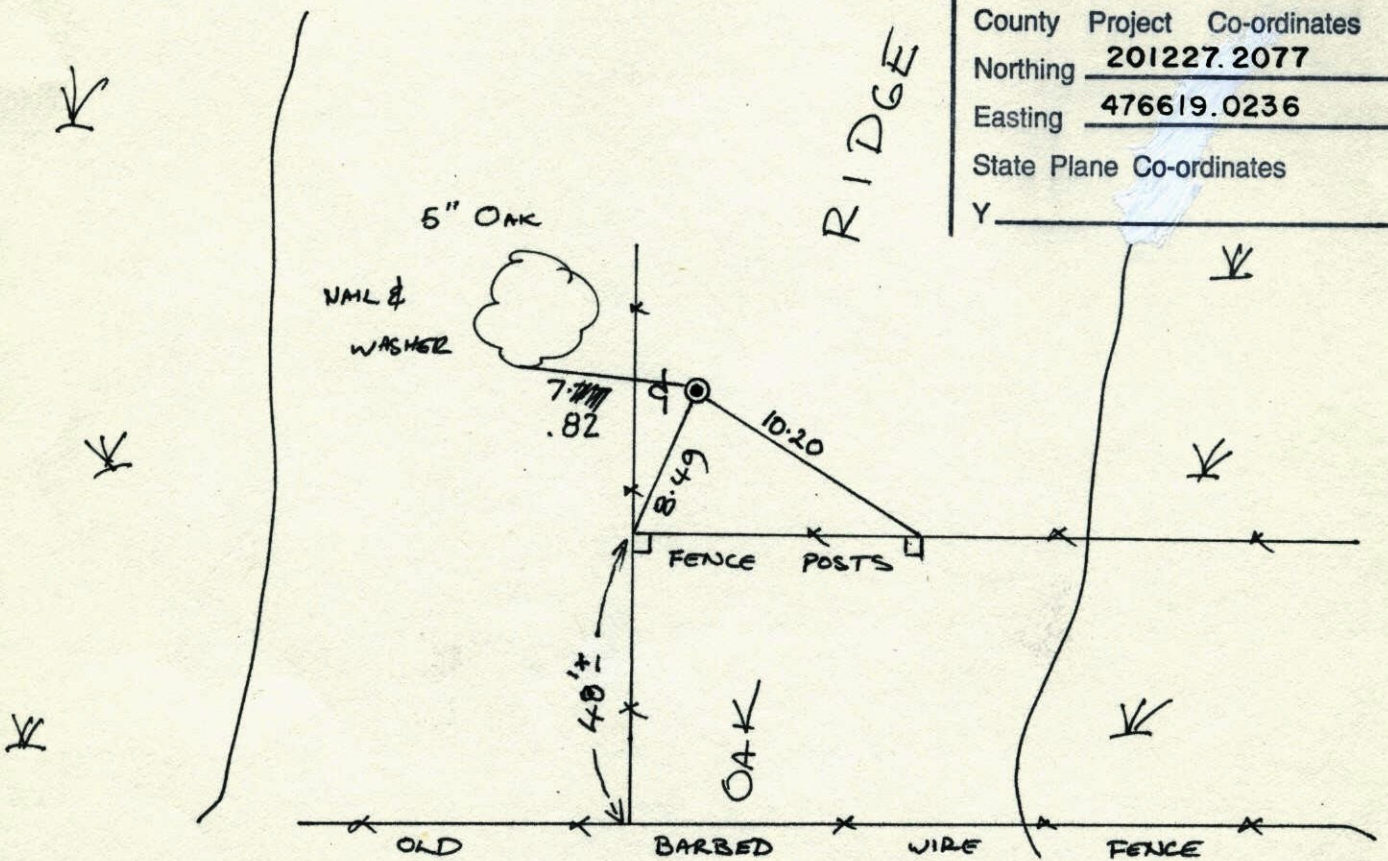
SOUTH QUARTER Corner of Sec. 29 Township 33 Range 24

I hereby certify that on the 10 day of NOVEMBER, 19⁶⁵, I found the described corner which was evidenced by 1" IRON PIPE FROM N.C. HOIUM TIES.

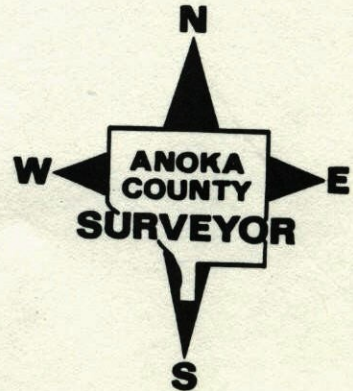
and I further certify that to perpetuate the location of said corner, I did, at the exact location thereof, place a permanent marker consisting of CAST IRON MONUMENT WITH SIGN & POST ON WEST SIDE.

which reference or witness monuments are located in the manner following:

N.A.D.	1983	Co-ordinates
County	Project	Co-ordinates
Northing	<u>201227.2077</u>	
Easting	<u>476619.0236</u>	
State Plane Co-ordinates		
Y _____		



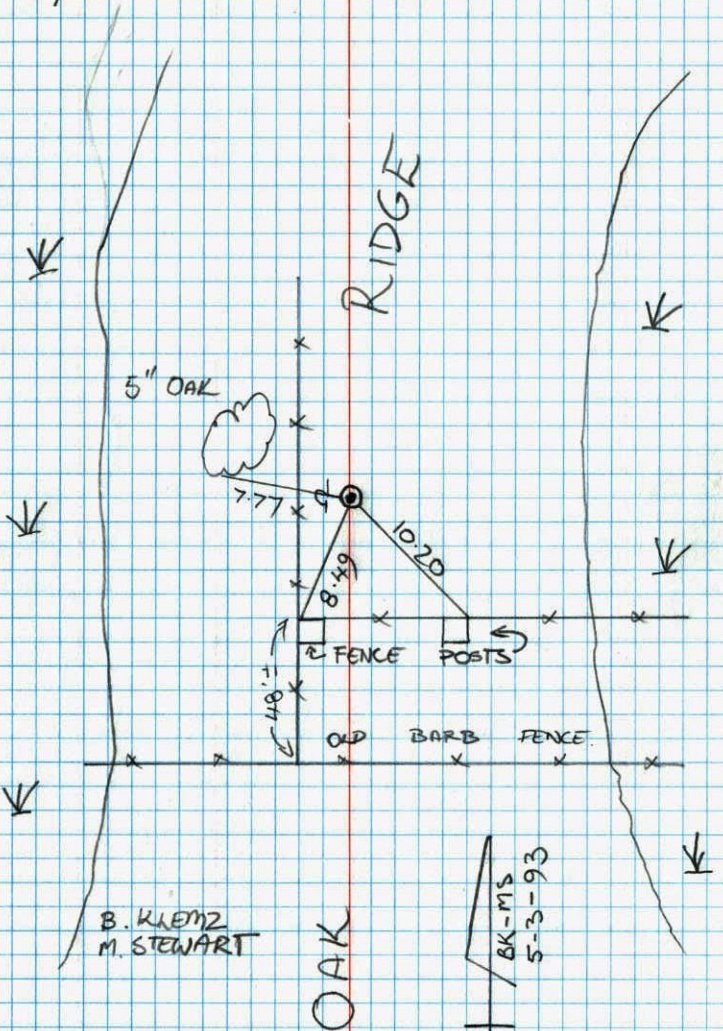
Revised date	Revised date	Revised date
8-3-81		
5-3-93		
7-8-97		
3-12-02		



REITE

S 1/4 Sec 29 T33R24

CAST IRON MONUMENT
W/ SIGN & POST

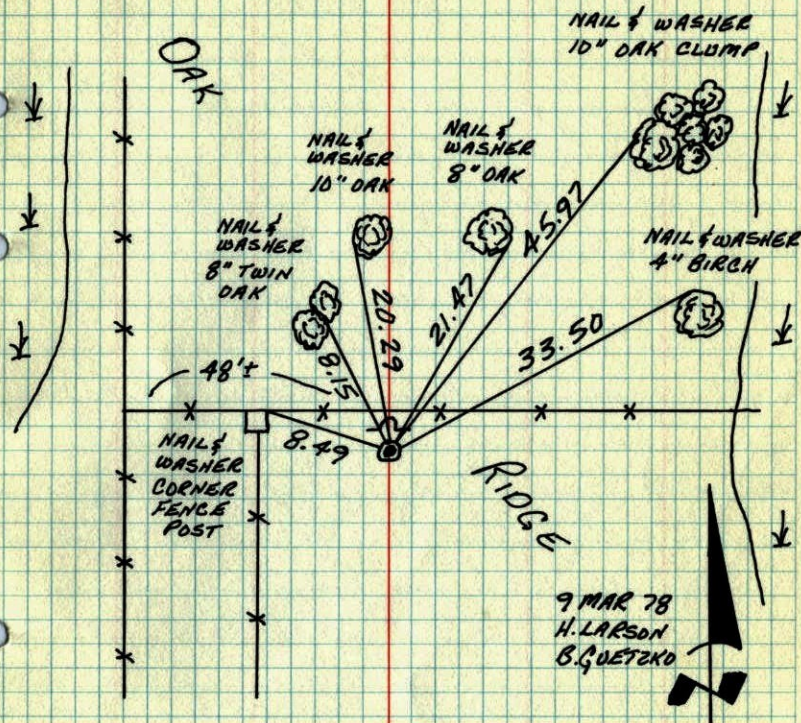


B. KLEMP
M. STEWART

BK-MS
5-3-93

S 1/4 COR. SECTION 29-T33-R24

RESET CAST IRON MONUMENT ACCORDING TO
SURVEY BY N.C. HOIUM, OCT. 1966. CAST IRON
FLUSH WITH SIGN AND POST ON NORTH SIDE.



9 MAR 78
H. LARSON
B. GUETZKO

TIE CHECK
8-3-81
P. ROSS
P. HORNBY
G. NEFFINGER

TEMPERATURE CORRECTED
AND HORIZONTALLY
TAPED MEASUREMENTS

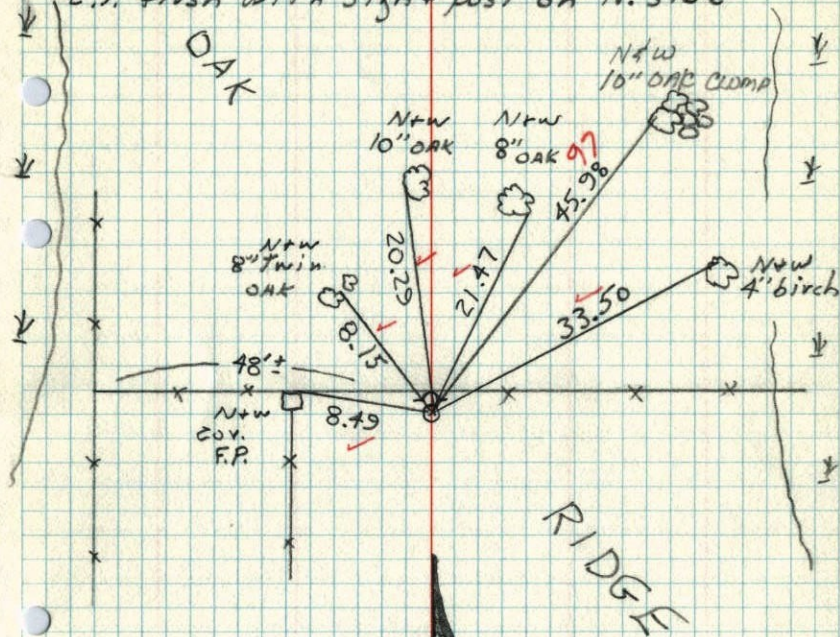
ROLAND W. ANDERSON
COUNTY SURVEYOR
ANOKA COUNTY, MINNESOTA

5/4 Cor. Section 29 T33 R24

Reset cast iron monument according

to survey by M.C. Holm Oct 1966.

C.I. flush with sign + post on N. side

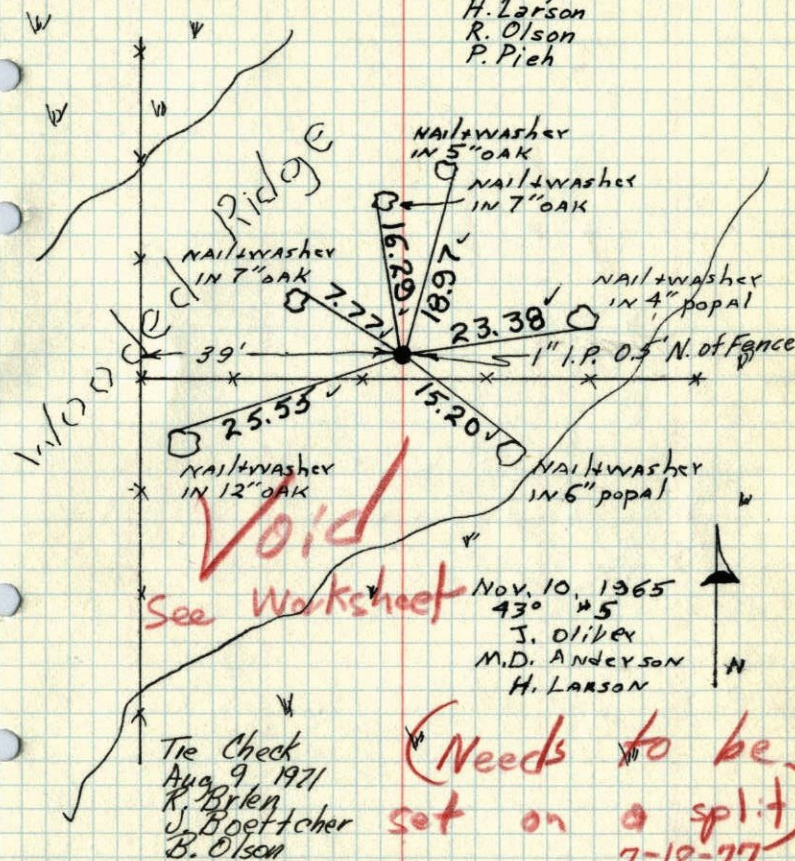


3-9-78
#8 32°
H. Larson
B. Guetzko

5/4 Cor. Sec. 29 T33 R24

Found 1" Iron pipe from N.C. Holm's
Ties. retied. Flush. Replaced with Cast
Iron Monument flush. July 3, 1968

H. Larson
R. Olson
P. Pieh



Void
See Worksheet

Nov. 10, 1965
43° 45'
J. Oliver
M.D. Anderson
H. Larson

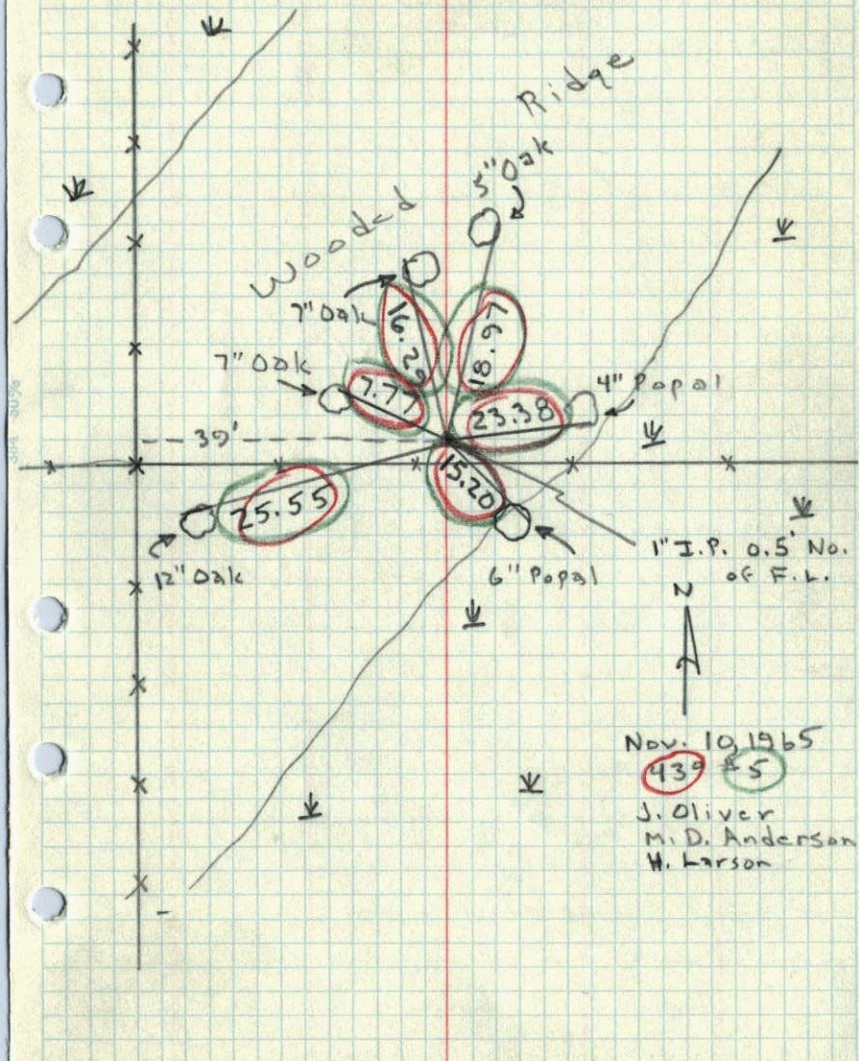
(Needs to be
set on a split)
7-18-77

Tie Check
Aug 9, 1971
K. Brylen
J. Boettcher
B. Olson

TEMPERATURE CORRECTED ROLAND W. ANDERSON
AND HORIZONTALLY COUNTY SURVEYOR
TAPED MEASUREMENTS ANOKA COUNTY, MINNESOTA

5/4 Cor. Sec. 29, T33, R24

Found 1" Iron Pipe from N.C. Hoiums
ties. Nails and washers in all tie trees.

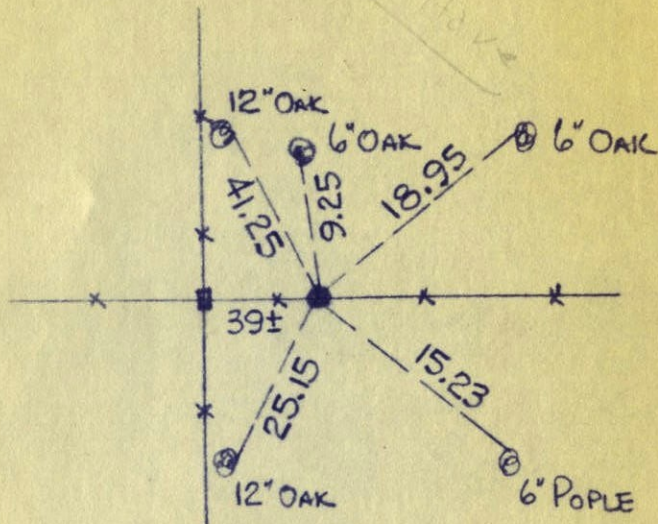


5/4 CORNER OF SECTION 29
TOWNSHIP 33, RANGE 24

1" I.P.

11/29/63

138/4



N. C. HOIUM
AND ASSOCIATES, INC.
LAND SURVEYORS

ANOKA, MINNESOTA