

CERTIFICATE OF LOCATION OF GOVERNMENT CORNER

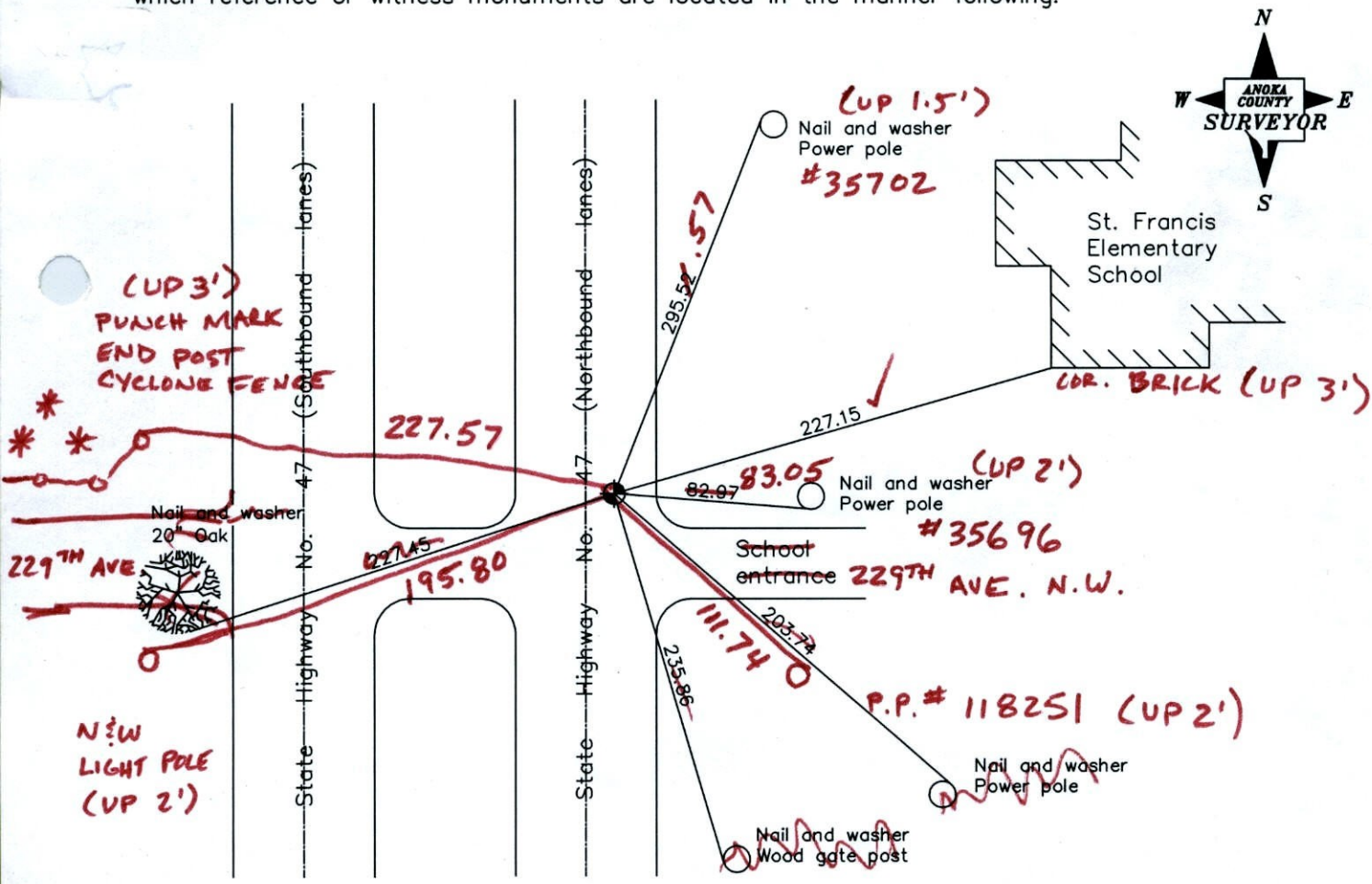
County of Anoka State of Minnesota

Northwest Corner of Sec. 5 Township 33 Range 24

I hereby certify that on the 4th day of September, 1962, I found the described corner which was evidenced by a concrete monument

and I further certify that to perpetuate the location of said corner, I did, at the exact location thereof, place a permanent marker consisting of a cast iron monument NO CAP - REPLACED
MON. TOP FLUSH W/ ROAD

which reference or witness monuments are located in the manner following:



Revised date

7/06/92
6/11/97
3/23/01

1-12-12
BK-SS
T/T - VRS

N.A.D. 1983 Coordinates
(1996 adjustment)

County Project Coordinates	
Northing	227450.4220
Easting	474041.2947

Date 3/23/01

VRS 30 = 0.06 N = 227450.374 E = 474041.219

CERTIFICATE OF LOCATION OF GOVERNMENT CORNER

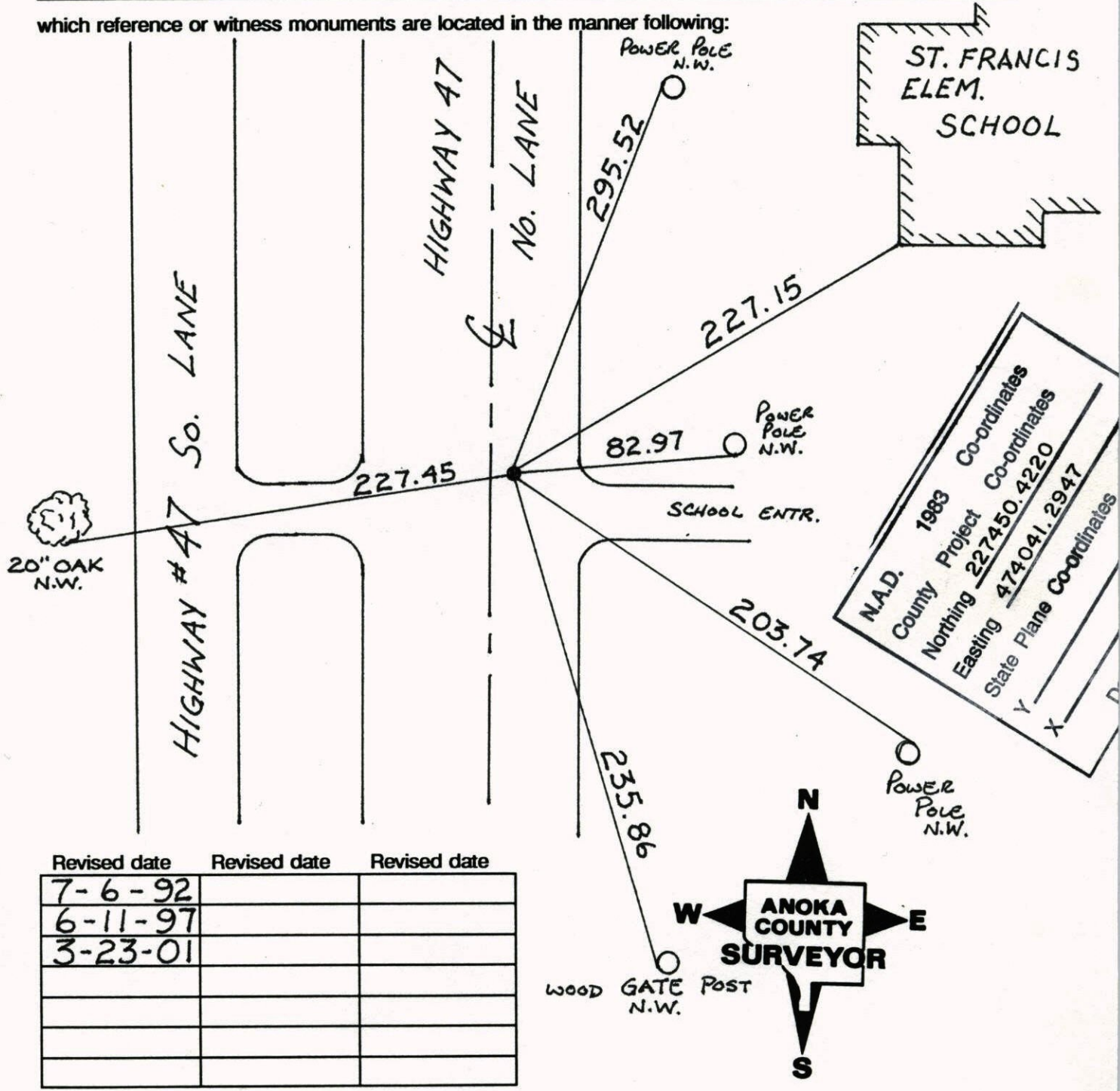
County of Anoka State of Minnesota

NORTHWEST Corner of Sec. 5 Township 33 Range 24

I hereby certify that on the 4 day of SEPT., 1962, I found the described corner which was evidenced by CONCRETE MON.

and I further certify that to perpetuate the location of said corner, I did, at the exact location thereof, place a permanent marker consisting of CAST IRON MON.

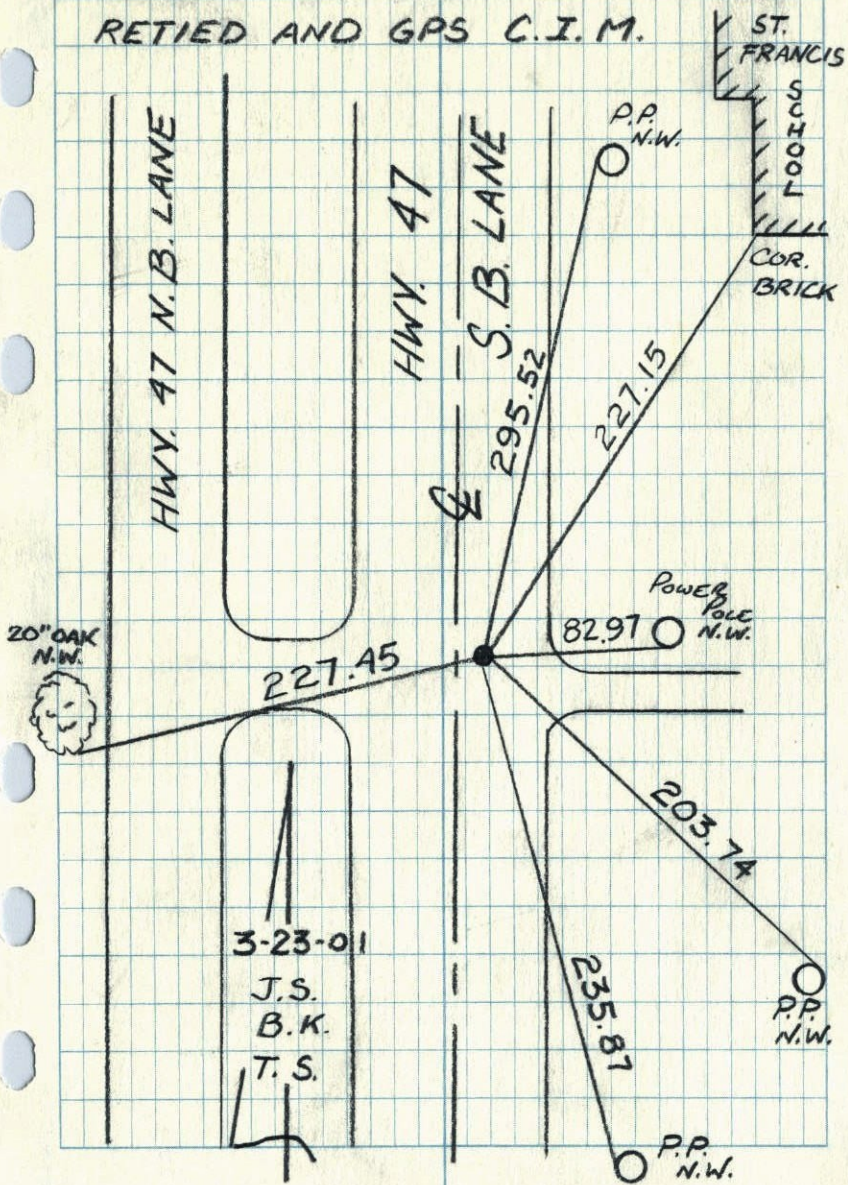
which reference or witness monuments are located in the manner following:



Revised date	Revised date	Revised date
7-6-92		
6-11-97		
3-23-01		

NORTHWEST COR. SEC. 5 T33 R24

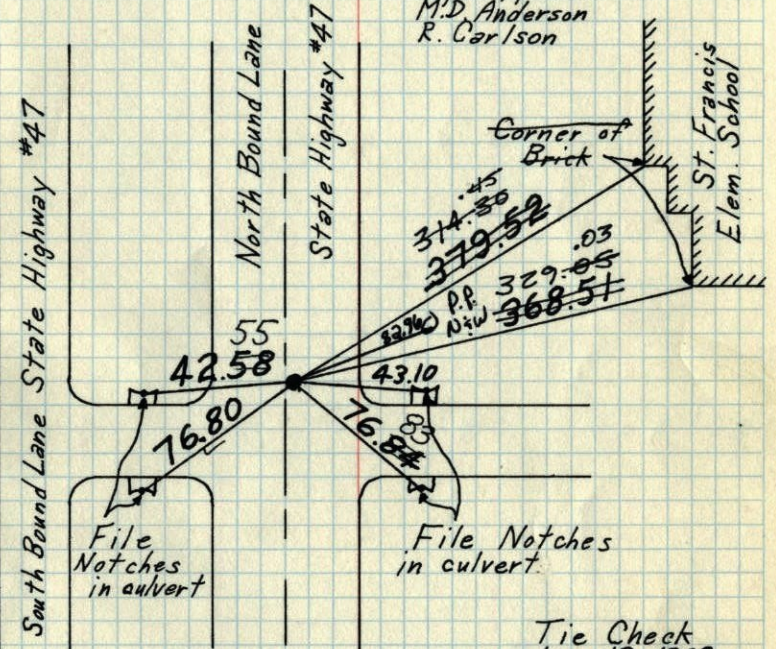
RETIED AND GPS C.I.M.



NW Cor. Sec. 5-T33-R24

Cast Iron Monument flush with black top
 3' East of centerline of North bound lane.
 Nail + Washers 3.06' North and 3.00' East.

Sept. 4, 1962
 M.D. Anderson
 R. Carlson



Tie Check
 June 25, 1975
 D. Dahl
 B. S.
 G. A.

TIE CHECK
 6-26-78
 O. DANL
 M. HISSLOW
 B. STEPHENS

Tie Check
 8-3-84
 O. ROSS #200
 G. UPS 8yd
 O. VOSEL

TIE CHECK
 7-15-81
 P. ROSS
 P. HORNBY
 G. NEFFINGER.

Tie Check
 June 19, 1968
 D. Powell
 P. Pish
 R. Olson

Tie Check
 July 29, 1971
 R. Brien
 J. Boettcher
 B. Olson

TEMPERATURE CORRECTED
 AND HORIZONTALLY
 TAPED MEASUREMENTS

ROLAND W. ANDERSON
 COUNTY SURVEYOR
 ANOKA COUNTY, MINNESOTA

NW Cor. Sec. 5 - T33 - R24

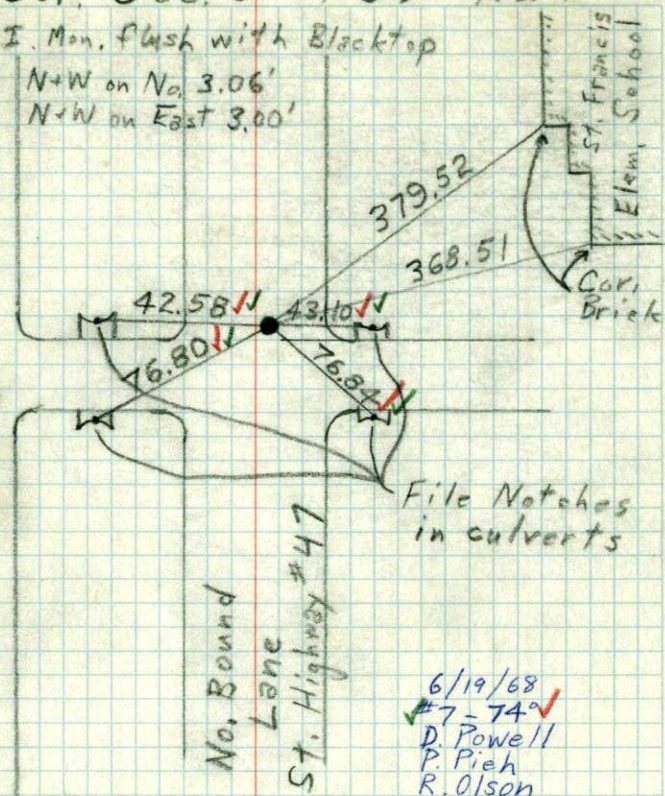
C.I. Mon. flush with Blacktop

N+W on No. 3.06'
N+W on East 3.00'

So. Bound Lane State Highway #47

No. Bound Lane

St. Highway #47



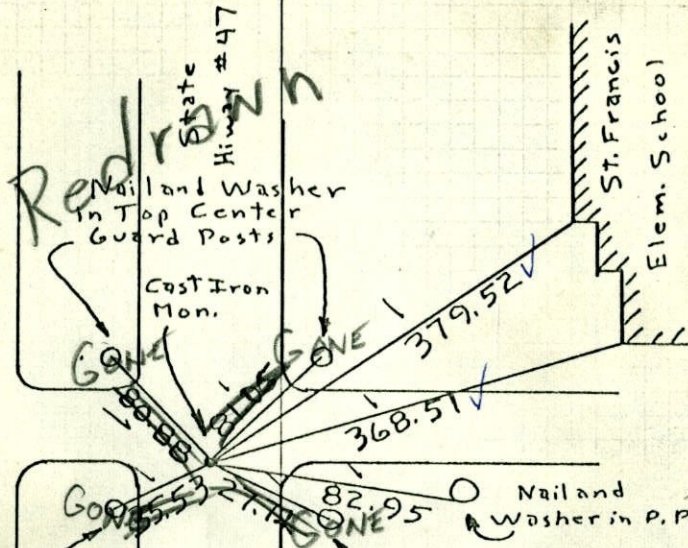
File Notches
in culverts

6/19/68
#7-74°
D. Powell
P. Pieh
R. Olson

NW Cor. Sec. 5, T 33, R 24

Set Cast Iron Monument Flush with BlackTop,
3' E. of E of North Bound Lane.

So. Bound Lane State Highway #47



Redrawn

Nail and Washer
in Top Center
Guard Posts

Cast Iron
Mon.

Nail and Washer
in P.P.



4 Sept. 62

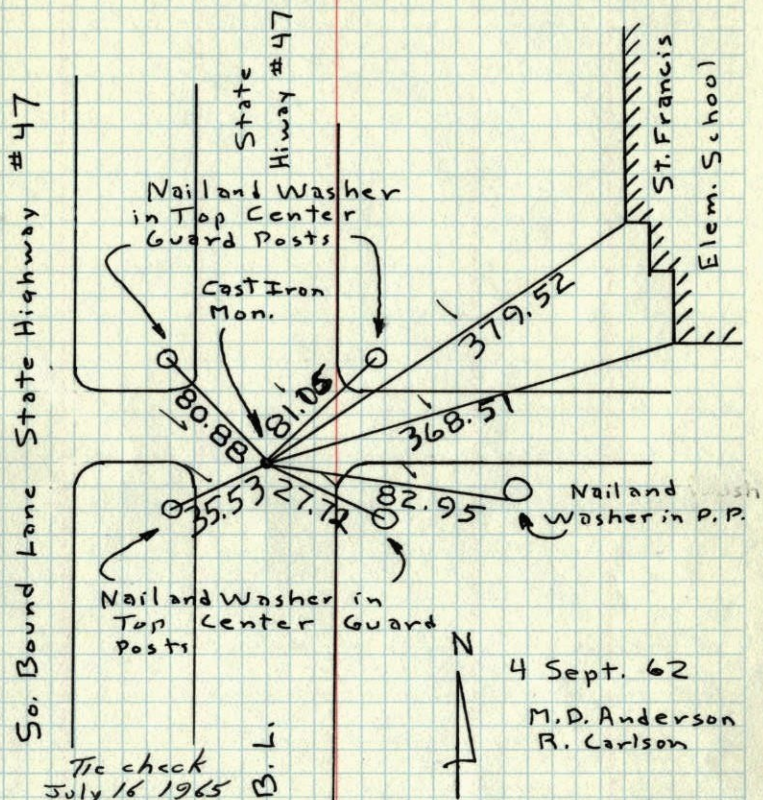
M. D. Anderson
R. Carlson

ROLAND W. ANDERSON
COUNTY SURVEYOR
ANOKA COUNTY, MINNESOTA

TEMPERATURE CORRECTED
AND HORIZONTALLY
TAPED MEASUREMENTS

NW Cor. Sec. 5, T 33, R 24

Set Cast Iron Monument Flush with BlackTop,
3' E. of E of North Bound Lane.



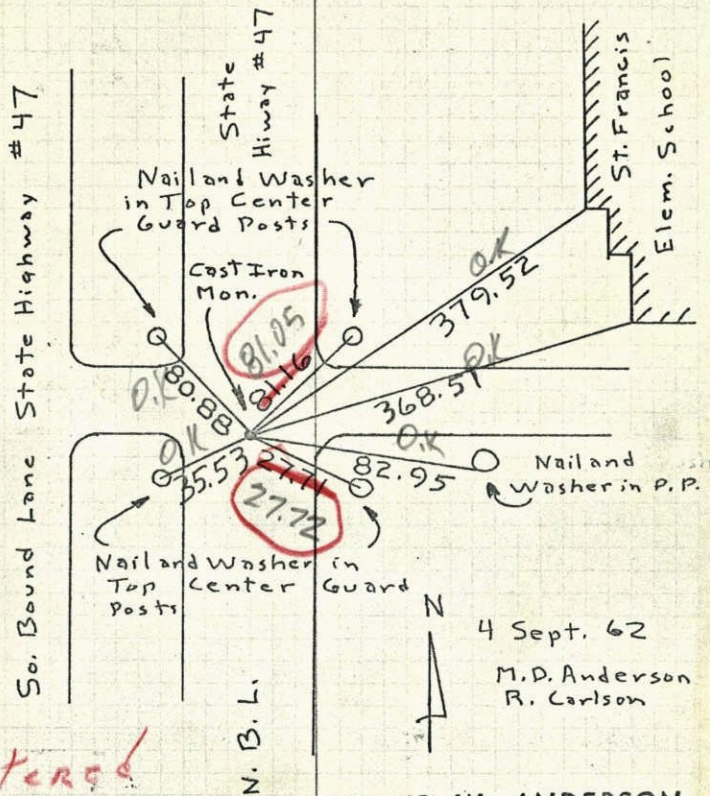
ROLAND W. ANDERSON
COUNTY SURVEYOR
ANOKA COUNTY, MINNESOTA

TEMPERATURE CORRECTED
AND HORIZONTALLY
TAPED MEASUREMENTS

Tie check
July 16, 1965
M.D. Anderson
J. Dunlop

NW Cor. Sec. 5, T 33, R 24

Set Cast Iron Monument Flush with BlackTop,
3' E. of E of North Bound Lane.



ROLAND W. ANDERSON
COUNTY SURVEYOR
ANOKA COUNTY, MINNESOTA

TEMPERATURE CORRECTED
AND HORIZONTALLY
TAPED MEASUREMENTS

Tie check
July 16, 1965
temp 80° M.D. Anderson
Tape #5 J. Dunlop

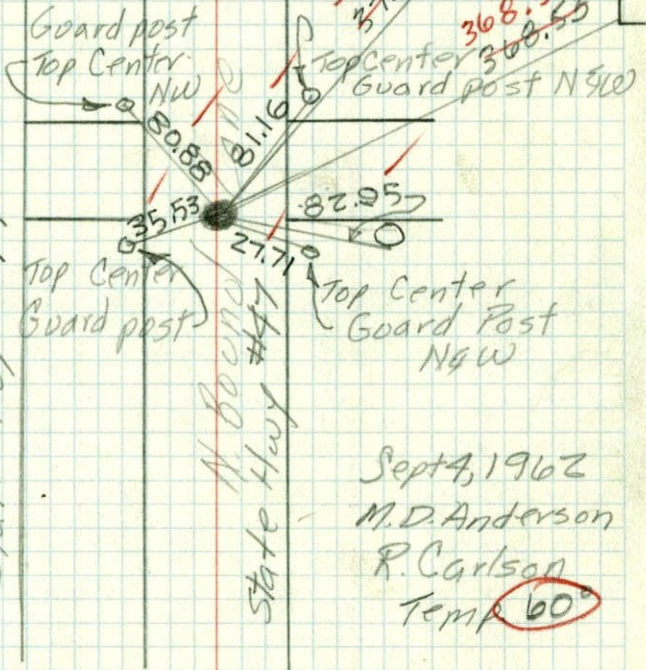
N.W. Cor. Sec. 5-33-24

Cast Iron Monument
flush With Black Top.
Monument 3' E. of E of N. Bl.

St. Frances
Elem. School

N

5 Bound Lane
State Hwy #47

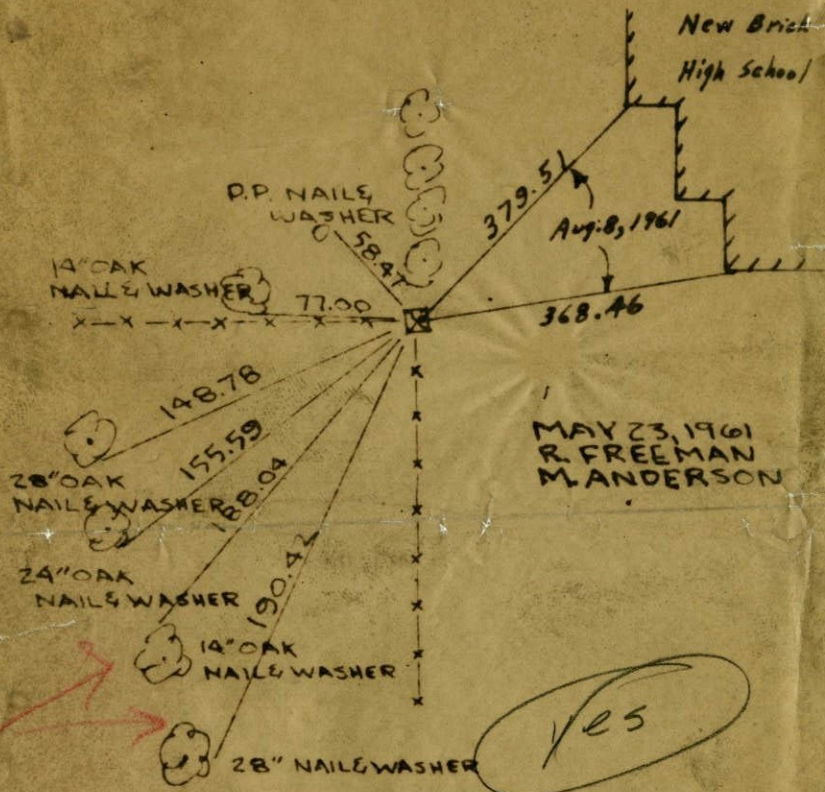


Sept 4, 1962
M.D. Anderson
R. Carlson
Temp 60°

N.W. COR. SEC. 5-33-24

6"x6" GRANITE MONUMENT

New Brick
High School



MAY 23, 1961
R. FREEMAN
M. ANDERSON

Did you check for
possible tree ties remaining?

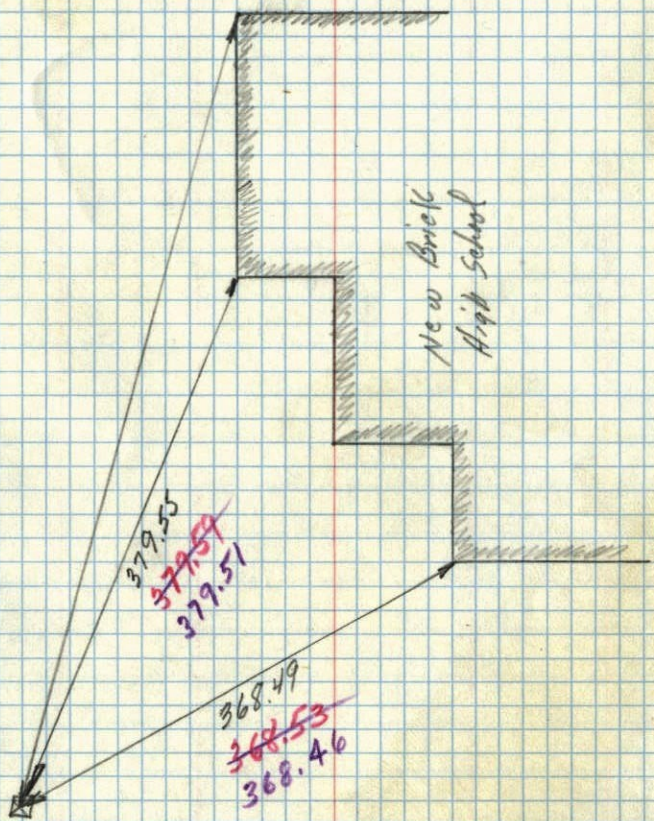
Yes

ROLAND W. ANDERSON
COUNTY SURVEYOR
ANOKA COUNTY, MINNESOTA
M.A.

TEMPERATURE CORRECTED
AND HORIZONTALLY
TAPED MEASUREMENTS

8 Aug. 1961
Freeman Anderson
+85°

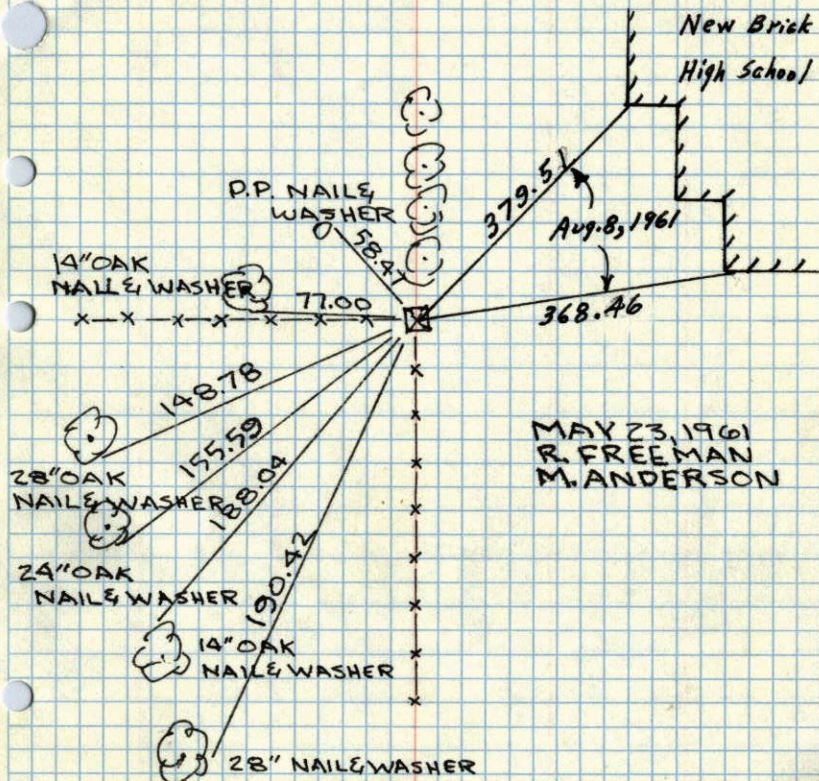
NW of Sec 5-33-24 Oak Grove



Note The tape we used on these meas.
is 0.02 per 100 Short

N.W. COR. SEC. 5-33-24

6" x 6" GRANITE MONUMENT

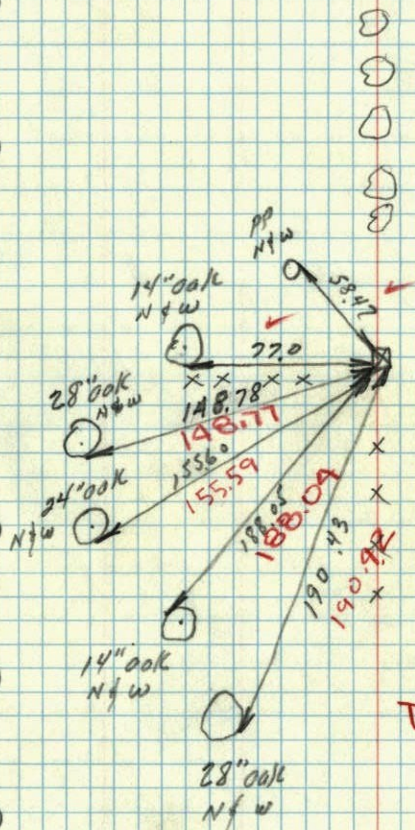


ROLAND W. ANDERSON
COUNTY SURVEYOR
ANOKA COUNTY, MINNESOTA
M.A.

TEMPERATURE CORRECTED
AND HORIZONTALLY
TAPED MEASUREMENTS

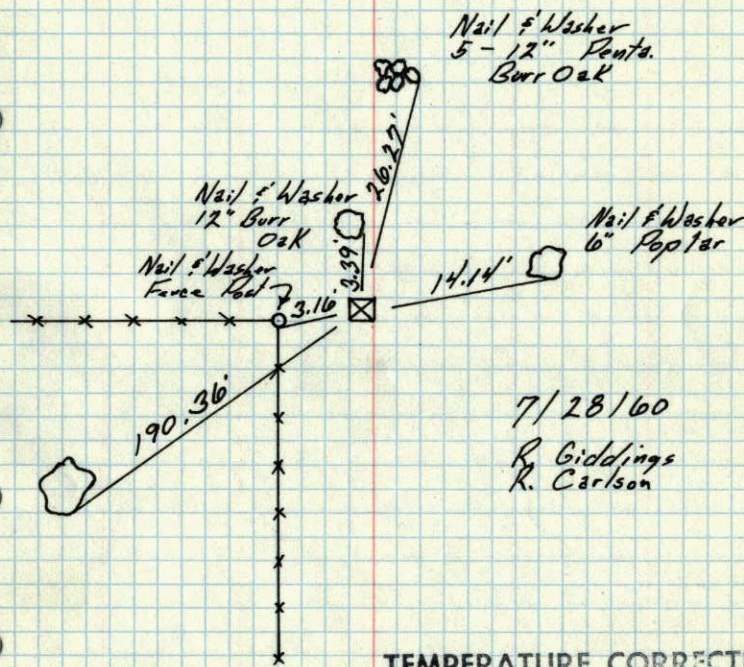
23 May 1961
 Freeman Anderson
 +80°

NW Cor Sec 5-33-24 Oak Grove
 6" x 8" Granite Mon. See old Ties



TEMP. CORR.
 for 80°

NW Cor. Sec 5 - T 33 - R 24
 6" x 8" Granite
 down 0.6'

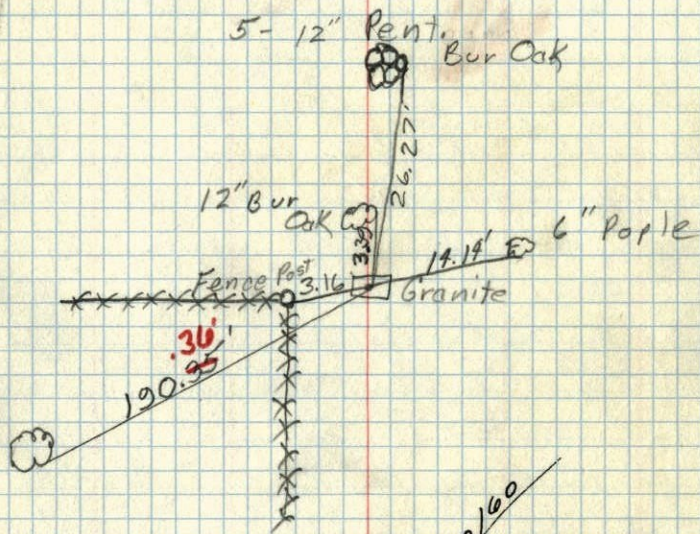


7/28/60
 R. Giddings
 R. Carlson

TEMPERATURE CORRECTED
 AND HORIZONTALLY
 TAPED MEASUREMENTS

ROLAND W. ANDERSON
 COUNTY SURVEYOR
 ANOKA COUNTY, MINNESOTA

N.W. Corn. Sec. 5 T.33, R. 24
 (Oak Grove)
 6" X 8" Granite .6' down



TC

July 28, 1960

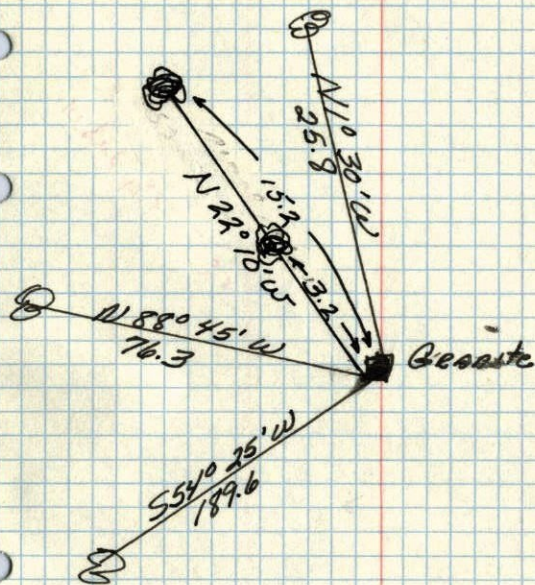
Temp 80°

R. Giddings

R. Carlson

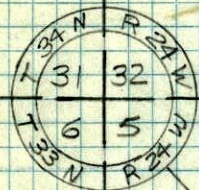
NW cor. of Sec. 5 T.33 R.24 ✓

Granite .8 down



Sept. 30, 1946
 Gaetneright

NW 5-33-24



S.E.P. IN
2" x 2" Hub

128.37'

S.P. 5

82.85'

S.E.P. IN
P.P. # 3

Did Reset C.H.
Dead file

112.94'

S.E.P. IN
2" x 2" Hub

SEC. COR. IN N.B.L., T.H. 47, @ ST. FRANCIS

TIES BY MISS. HIGHWAY DEPT.

L.A. MADOLE, RESIDENT ENGINEER