

CERTIFICATE OF LOCATION OF GOVERNMENT CORNER

County of Anoka

State of Minnesota

West 1/4 Corner of Sec. 31 Township 33 Range 24

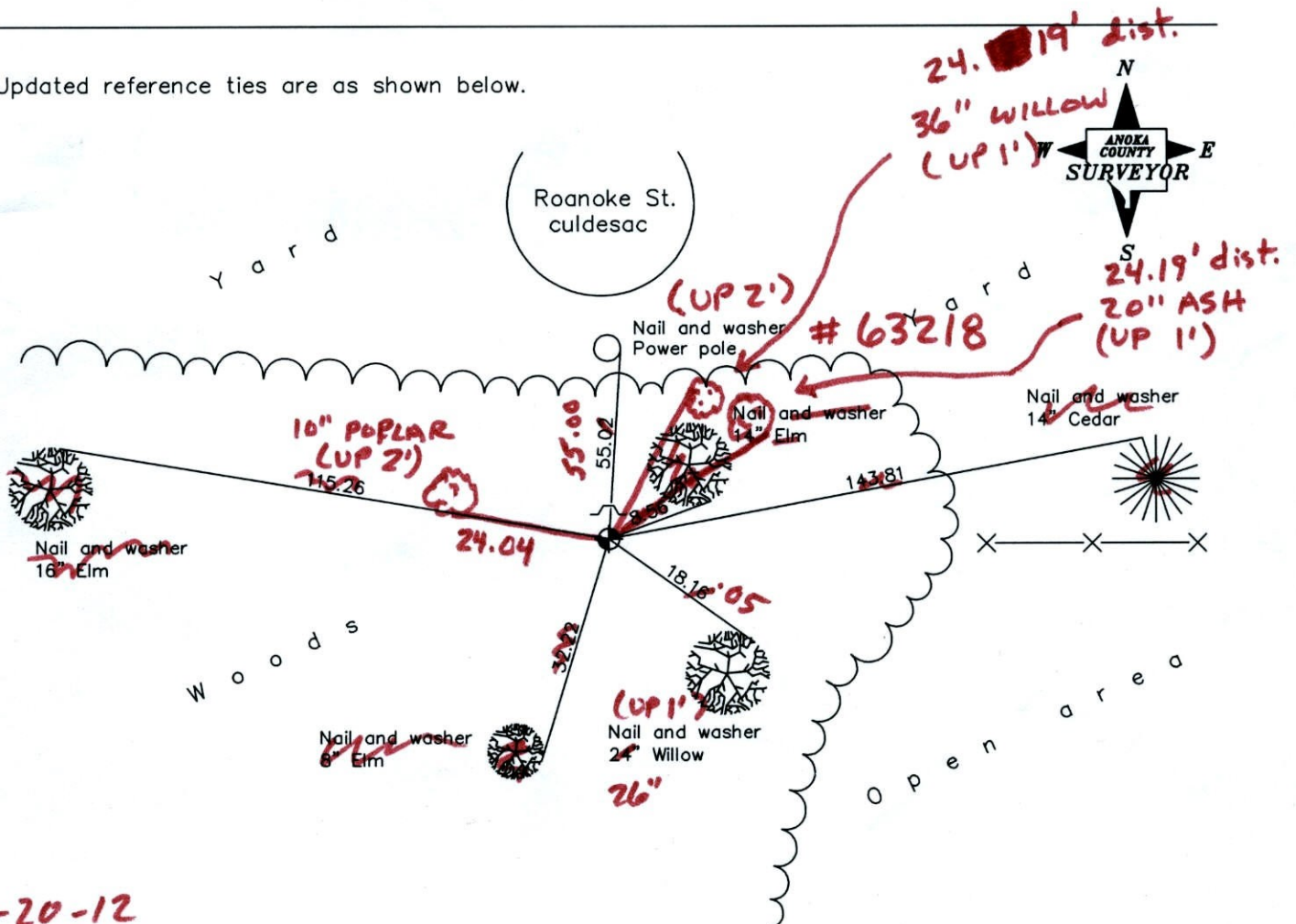
On the 13th day of December, 1965, the described corner was evidenced by area resurvey

and to perpetuate the location of said corner, at the exact location thereof, a permanent marker was placed consisting of a cast iron monument with a sign and post on the north side

(FALLEN TREES OVER SIGN & MON.)

AND on the ___ day of _____, _____, said permanent marker was _____

Updated reference ties are as shown below.



**1-20-12
BK-SS
TAPED**

Revised date

7/03/85
8/29/88
5/27/97

N.A.D. 1983 Coordinates
(1996 Adjustment)

County Project Coordinates

Northing	198769.9087
Easting	468654.6967
Date	11/07/01

I hereby certify that this United States public land survey monument record is correct and complete to the best of my knowledge and belief.

Date _____
_____, Anoka County Surveyor
Minnesota License Number _____

CERTIFICATE OF LOCATION OF GOVERNMENT CORNER

County of Anoka

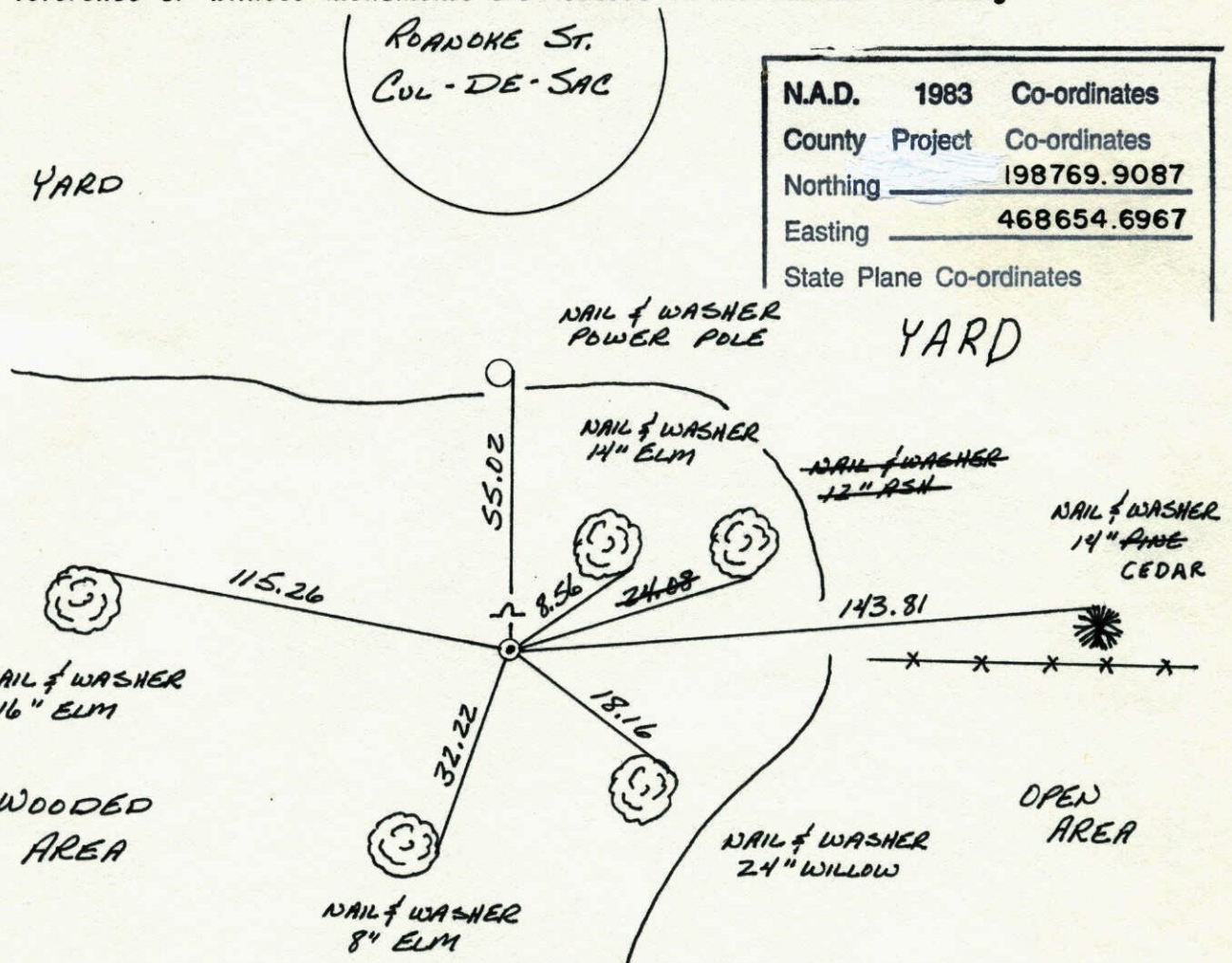
State of Minnesota

WEST 1/4 Corner of Sec. 31 Township 33 Range 24

I hereby certify that on the 13 day of DECEMBER, 1965, I found the described corner which was evidenced by AREA RESURVEY

and I further certify that to perpetuate the location of said corner, I did, at the exact location thereof, place a permanent marker consisting of CAST IRON MONUMENT WITH SIGN AND POST ON THE NORTH SIDE

which reference or witness monuments are located in the manner following:



N.A.D.	1983	Co-ordinates
County	Project	Co-ordinates
Northing	198769.9087	
Easting	468654.6967	
State Plane Co-ordinates		

Revised date	Revised date	Revised date
7-3-85		
8-29-88		
5-27-97		

