

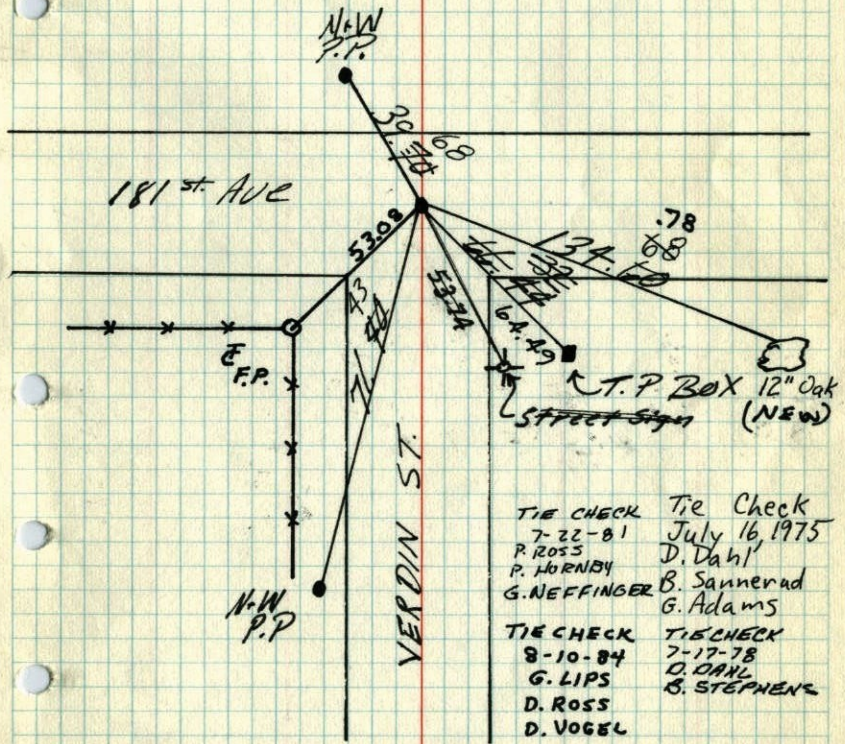
SE Corn. Sec. 33 - T33-R24

Granite Mon. down 1.3'
I.P. on N. Side

Placed Cast Iron Mon. Flush on
Top of Granite PK's 2.0' N+E

RAISED C.T.
7-26-77

July 3 1968
H. Larson
R. Olson
P. Pich



TIE CHECK	Tie Check
7-22-81	July 16, 1975
P. ROSS	D. Dahl
P. HORNBY	B. Sannerud
G. NEFFINGER	G. Adams
TIE CHECK	TIE CHECK
8-10-84	7-17-78
G. LIPS	D. OAKL
D. ROSS	B. STEPHENS
D. VOGEL	

TEMPERATURE CORRECTED
AND HORIZONTALLY
TAPED MEASUREMENTS.

ROLAND W. ANDERSON
COUNTY SURVEYOR
ANOKA COUNTY, MINNESOTA