

CERTIFICATE OF LOCATION OF GOVERNMENT CORNER

County of Anoka

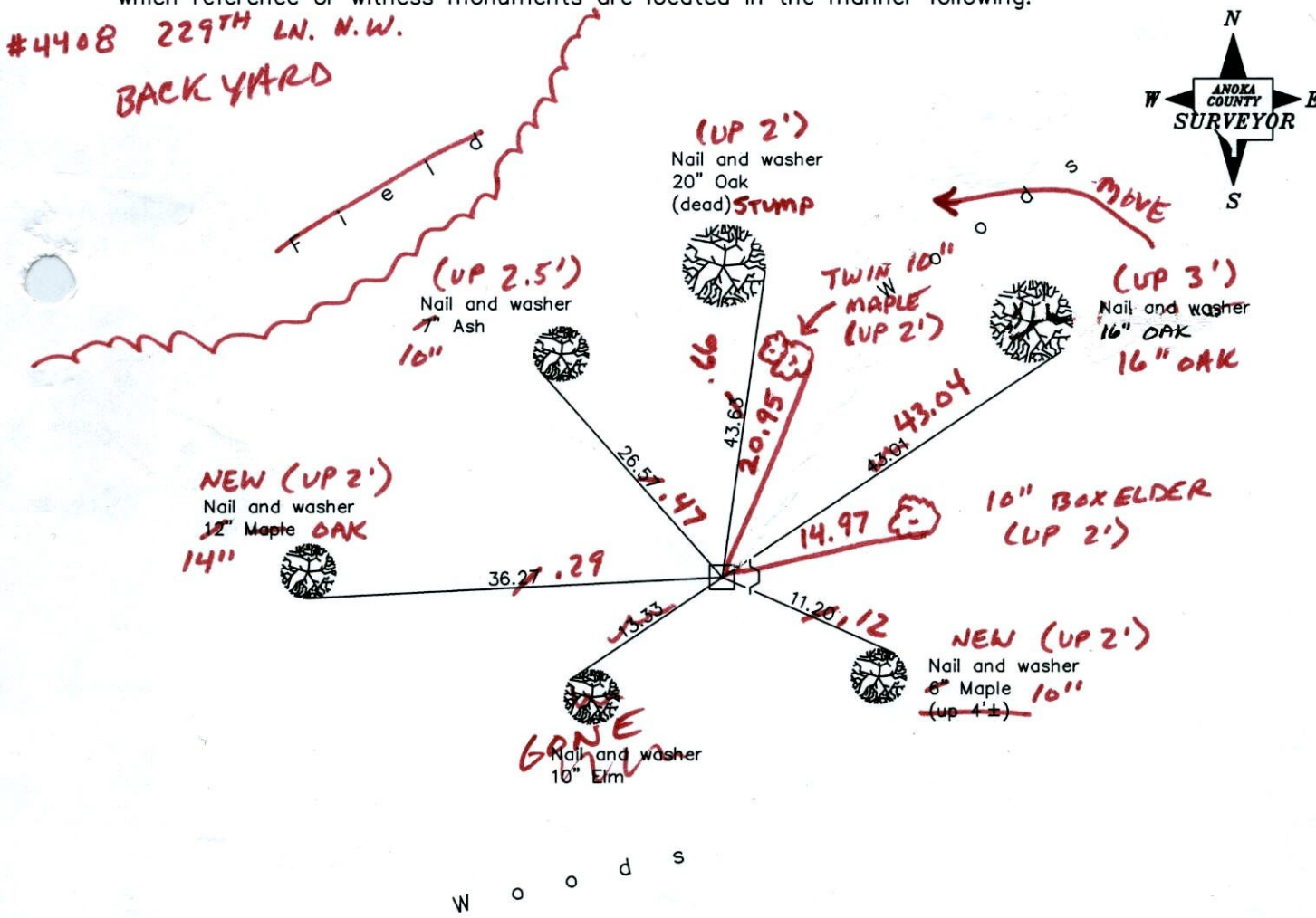
State of Minnesota

North 1/4 Corner of Sec. 6 Township 33 Range 24

I hereby certify that on the 2nd day of September, 1965, I found the described corner which was evidenced by a granite monument

and I further certify that to perpetuate the location of said corner, I did, at the exact location thereof, place a permanent marker consisting of the granite monument with a sign and post on the east side **(UP 0.3' ±)**

which reference or witness monuments are located in the manner following:



Revised date

6/27/97
5/08/01

1-13-12
BK-55
TAPED

N.A.D. 1983 Coordinates
(1996 adjustment)

County Project Coordinates
Northing <u>227457.8225</u>
Easting <u>471400.3506</u>

Date 5/08/01

CERTIFICATE OF LOCATION OF GOVERNMENT CORNER

County of Anoka

State of Minnesota

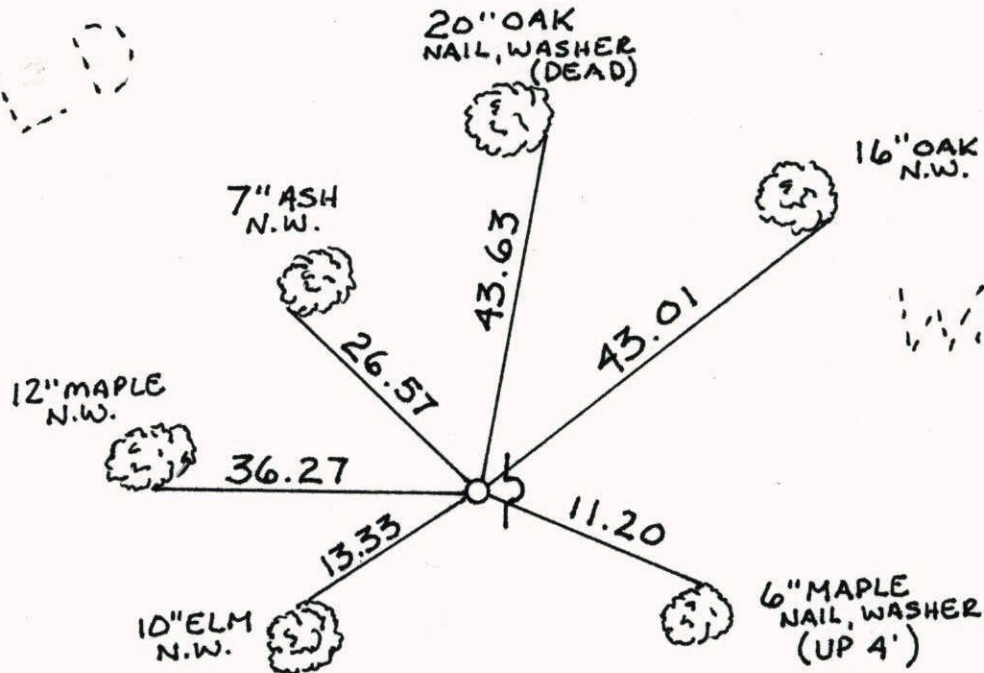
NORTH 1/4 Corner of Sec. 6 Township 33 Range 24

I hereby certify that on the 2 day of SEPT., 1965, I found the described corner which was evidenced by GRANITE

and I further certify that to perpetuate the location of said corner, I did, at the exact location thereof, place a permanent marker consisting of GRANITE, SIGN AND POST ON EAST SIDE

which reference or witness monuments are located in the manner following:

FIELD

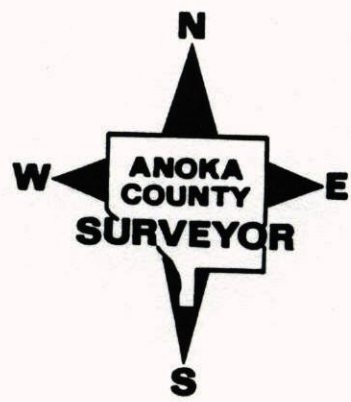


WOODS

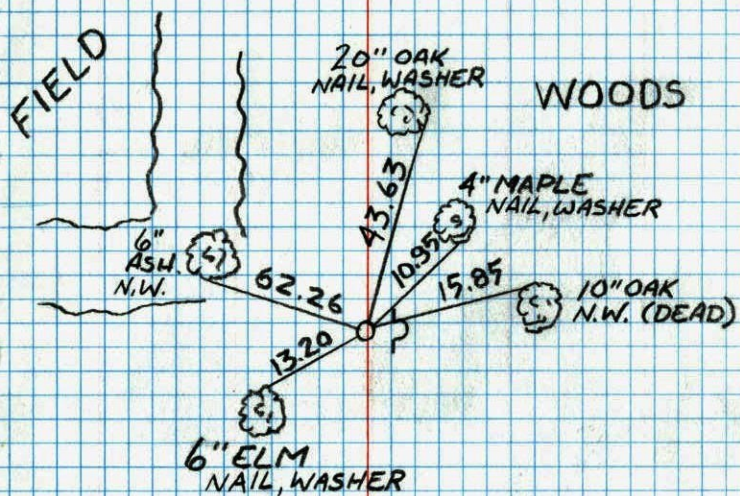
WOODS

N.A.D.	1983	Co-ordinates
County	Project	Co-ordinates
Northing	227457.8225	
Easting	471400.3506	
State Plane	Co-ordinates	
Y		

Revised date	Revised date	Revised date
6-27-97		
5-8-01		



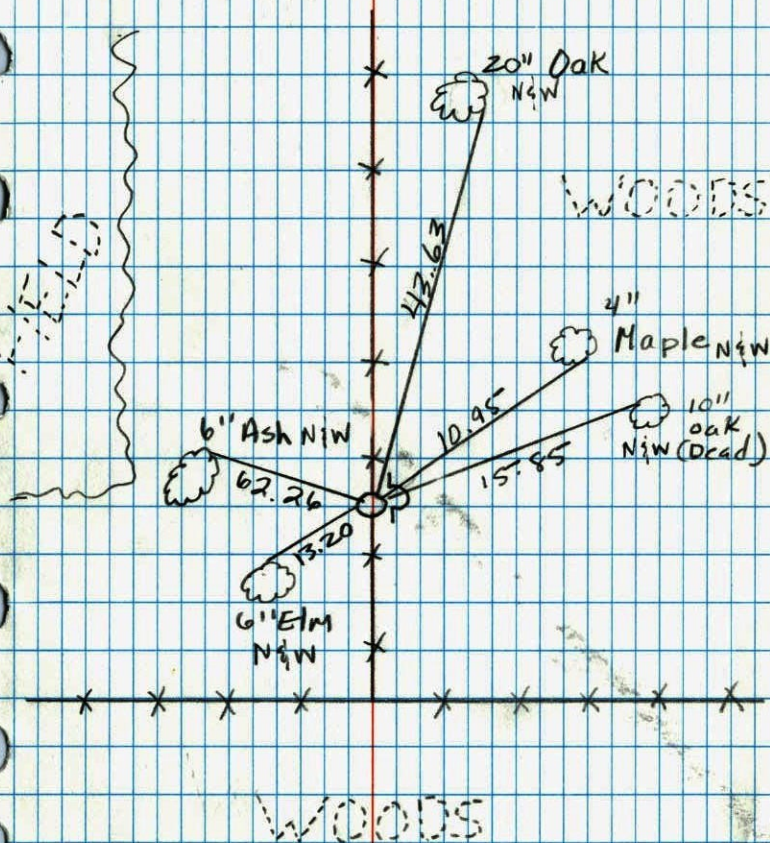
NORTH 1/4 S.6 T33 R.24
 GRANITE, SIGN AND POST
 ON EAST SIDE



WOODS

6-27-97
 H. ASKEW
 L. GRAYSON

North Quarter Corner Sec. 6 T33 R24
 Relied Granite & put in sign &
 post on East Side p. 12A



6-27-97
 H. ASKEW
 L. GRAYSON

4