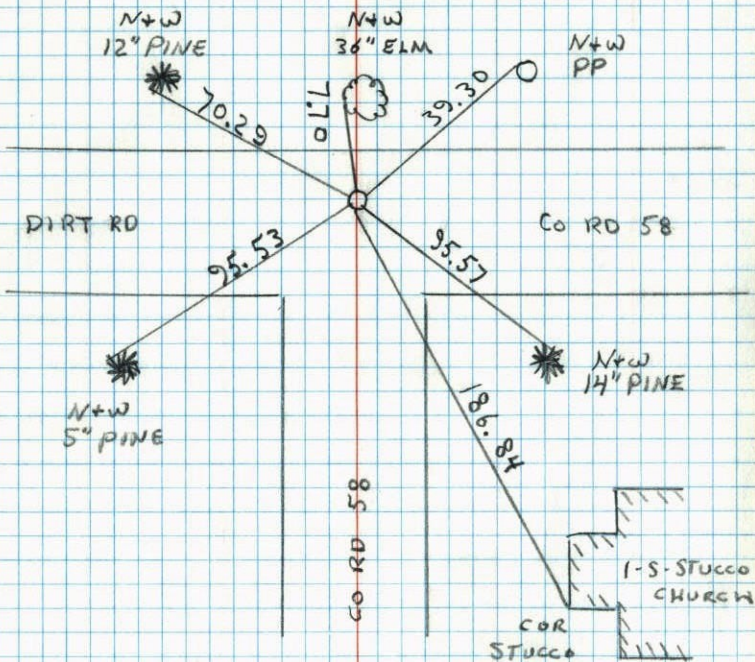


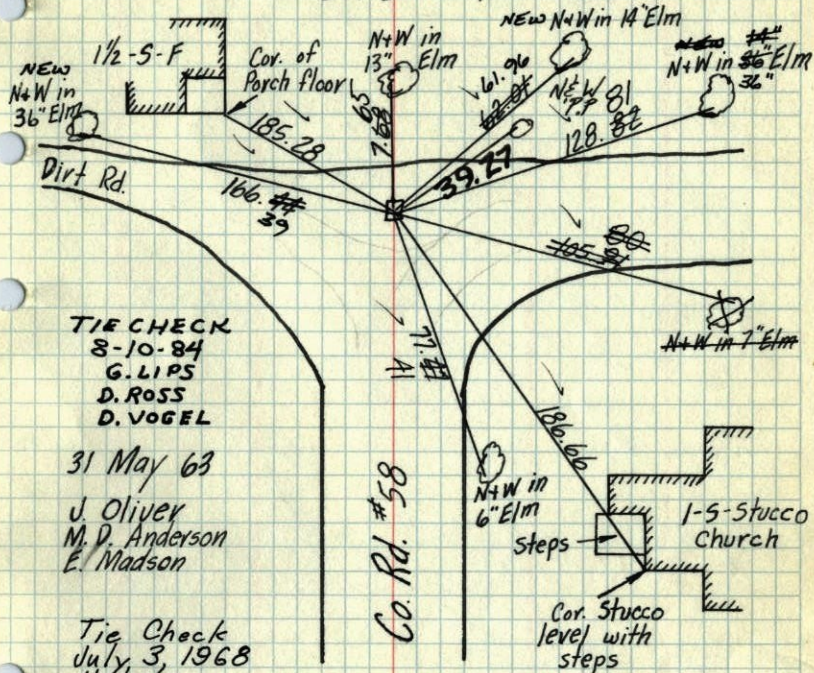
S 1/4 COR. SECTION 32 T33 R24

SET PART OF A CAST IRON IN CONCRETE
ON TOP OF GRANITE RETIED

11-22-93
W. LARSON
B. KLEINZ
W. STEWART



S 1/4 Cor. Sec. 32, T. 33, R. 24

Found 8" Sq. Granite Mon. down 8' from A.C.H.D. ties.
Set I.P. on North side

TIE CHECK
8-10-84
G. LIPS
D. ROSS
D. VOGEL

31 May 63

J. Oliver
M. D. Anderson
E. Madson

Tie Check
July 3, 1968
H. Larson
R. Olson
P. Pieh

TEMPERATURE CORRECTED
AND HORIZONTALLY
TAPED MEASUREMENTS

TIE CHECK
7-22-81
P. ROSS
P. HOFFMANN
G. NEFFINGER

Tie Check
July 15, 1975
D. Dahl
B. S.
G. A.

TIE CHECK
7-17-78
D. DAHL
B. STEPHENS

Tie check
July 28, 1965
M. D. Anderson
J. Dunlop

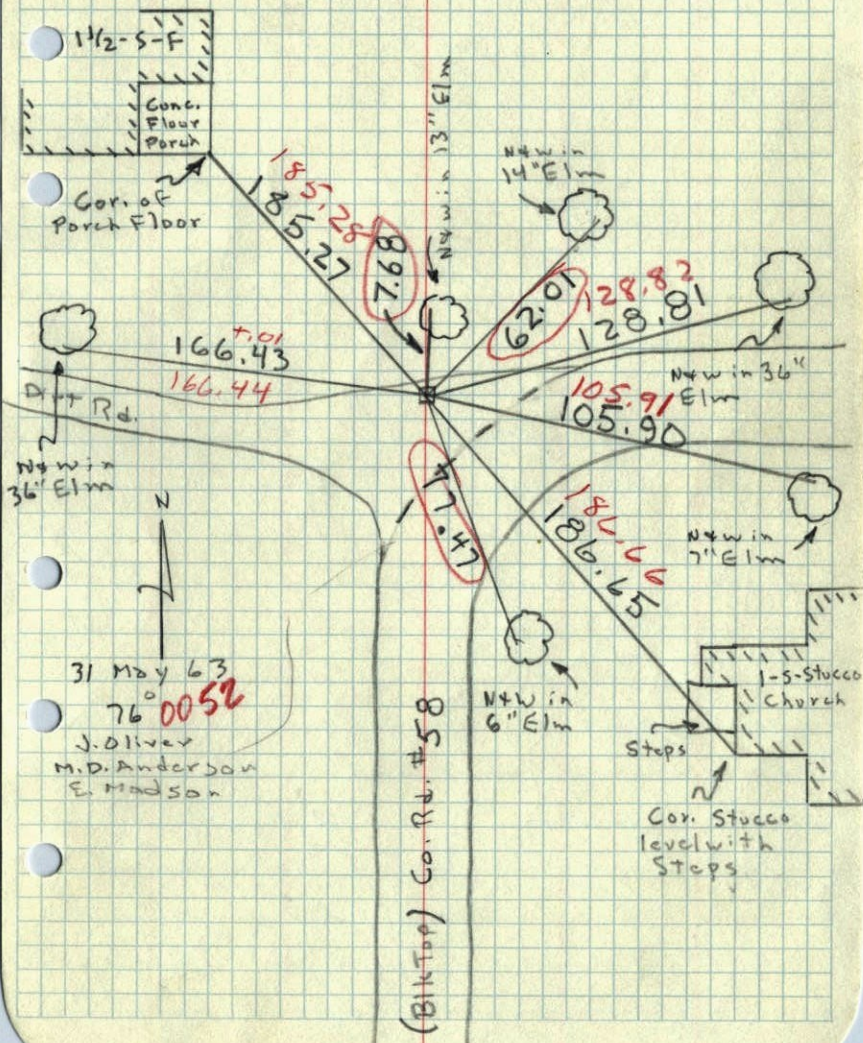
Tie Check
July 26, 1971
R. Brien
J. Baettcher
B. Olson

ROLAND W. ANDERSON
COUNTY SURVEYOR
ANOKA COUNTY, MINNESOTA

So. 1/4 Cor. Sec. 32, T33, R24

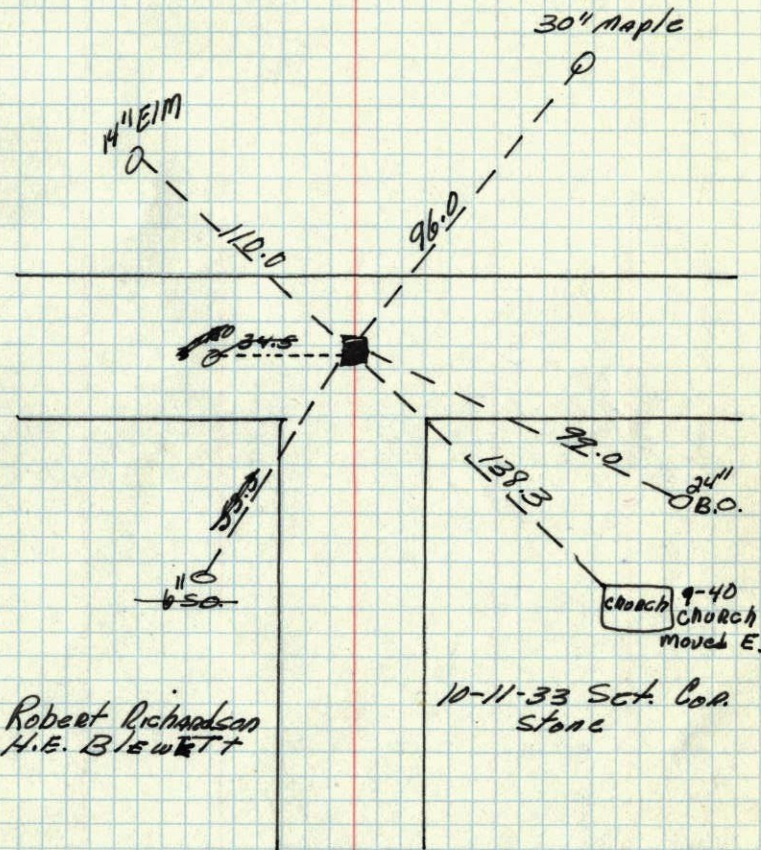
Found 8" Sq. Granite Mon. down 1' From

A.C.H.D. Ties. Set I.P. on North Side



S 1/4 corner of Sec. 32 + 33 R24

Nail set by J.E. Hill + Sgs. Corp. Removed + Stone set in place + retied.



Robert Richardson
H.E. BLEWETT

Anakia Co Hwy Dept

Oct. 11 - 1933

H. E. Blewett
Robt. Richardson
Set Stone.

Nail left by J. E. H.
Removed and Stone
Set.

