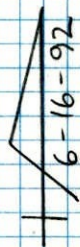
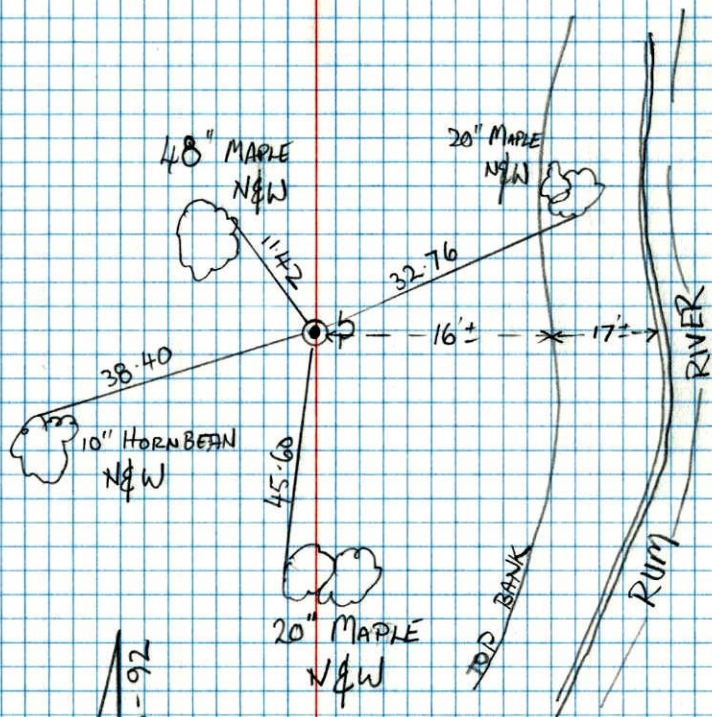


RETRIE

W.C. ON S. LINE Sec. 31 T33 R24

CAST IRON MONUMENT

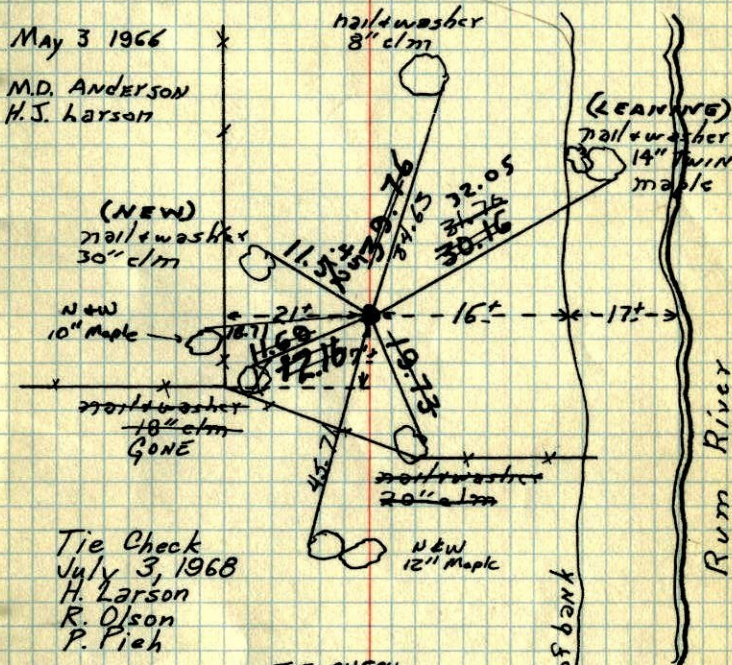
WITH SIGN & POST ON EAST SIDE



T. ZIMMERMAN
J. ANDERSON
H. LARSON

W.C. on S. Line Sec. 31 T33 R24

set on bank of Rum River from resurvey
on west side of river. C.I. mon. Flush.



May 3 1966
M.D. ANDERSON
H.J. Larson

(NEW)
nailwasher
30\"/>

new
10\"/>

nailwasher
18\"/>

Tie Check
July 3, 1968
H. Larson
R. Olson
P. Pieh

Tie Check
Aug 3, 1971
R. Drien
J. Boettcher
B. Olson

TIE CHECK
7-14-78
O. DANL
M. KISROW

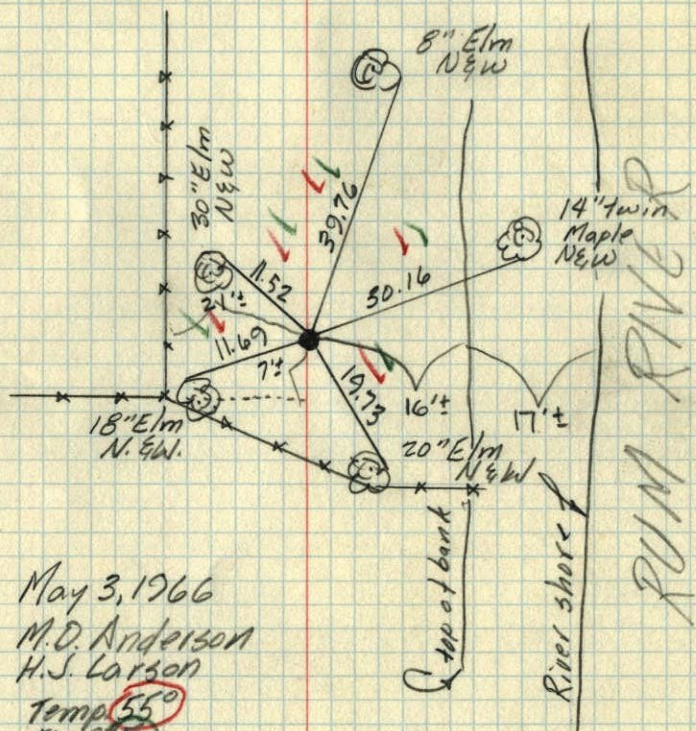
TIE CHECK
7-29-81
P. ROSS
R. HORNBY
G. NEFFINGER

TIE CHECK
8-20-84
G. LIPS
D. ROSS
D. VOGEL

TEMPERATURE CORRECTED
AND HORIZONTALLY
TAPED MEASUREMENTS

ROLAND W. ANDERSON
COUNTY SURVEYOR
ANOKA COUNTY, MINNESOTA

W.C. on S. line Sec. 31-T33-R24
 set on Bank of Rum River from resurvey
 West Side Rum River
 Cast Iron Monument Flush



May 3, 1966
 M.D. Anderson
 H.J. Larson
 Temp. 55°
 Tap 25

TEMPERATURE CORRECTED
 AND HORIZONTALLY
 TAPED MEASUREMENTS

ROLAND W. ANDERSON
 COUNTY SURVEYOR
 ANOKA COUNTY, MINNESOTA