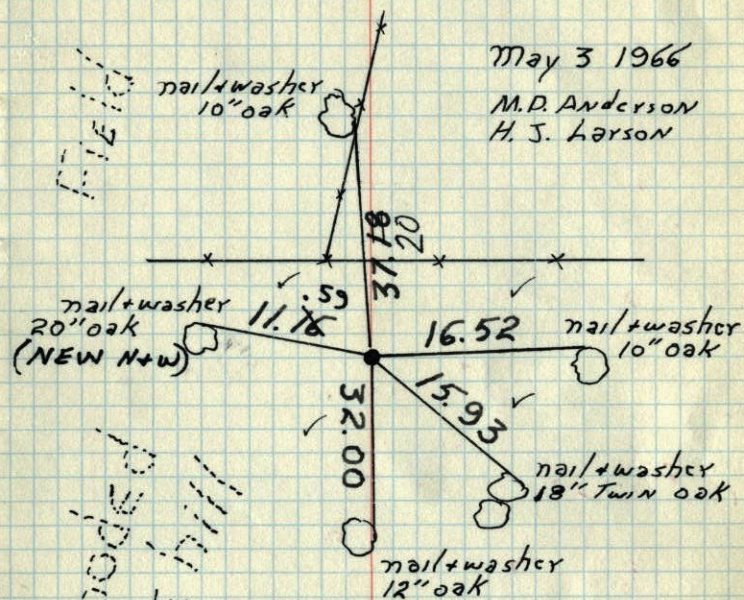


W.C. on South line. Sec. 31 T33 R24

Set on top of RIVER bluff from resurvey
west side of Rum River. C.I. mon. flush.



WOODED SIDE HILL

| | | |
|--|---|---|
| TIE CHECK 8-20-84 G. LIPS D. ROSS D. VOGEL | Tie Check July 16, 1975 D. Dahl B. Sannerud G. Adams | Tie Check July 3, 1968 H. Larson R. Olson P. Pieh |
| TIE CHECK 7-14-78 D. DAHL M. KISROW | Tie Check Aug. 3, 1971 R. Brien J. Boettcher B. Olson | |

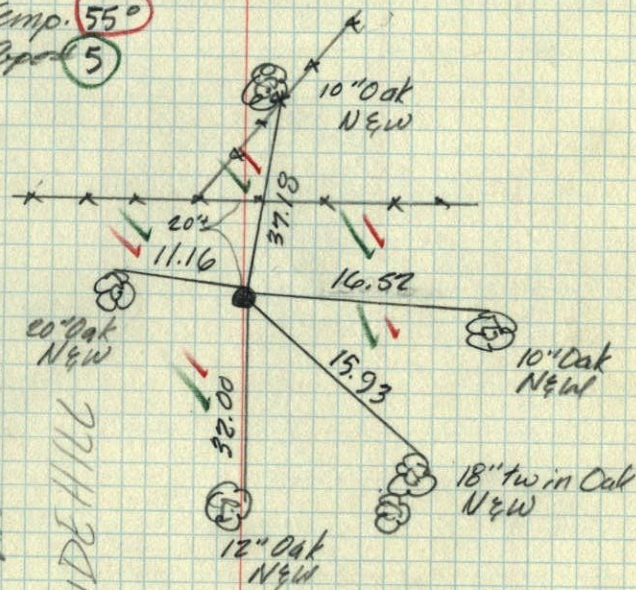
TEMPERATURE CORRECTED
AND HORIZONTALLY
TAPED MEASUREMENTS

ROLAND W. ANDERSON
COUNTY SURVEYOR
ANOKA COUNTY, MINNESOTA

W.C. on S. line Sec. 31-T33R24

Set on top of River bluff from Resurvey
West side Rum River
Cast Iron Monument flush

May 3, 1966
M.D. Anderson
H. J. Larson
Temp. 55°
Paper 5



TEMPERATURE CORRECTED
AND HORIZONTALLY
TAPED MEASUREMENTS

ROLAND W. ANDERSON
COUNTY SURVEYOR
ANOKA COUNTY, MINNESOTA