

CERTIFICATE OF LOCATION OF GOVERNMENT CORNER

County of Anoka

State of Minnesota

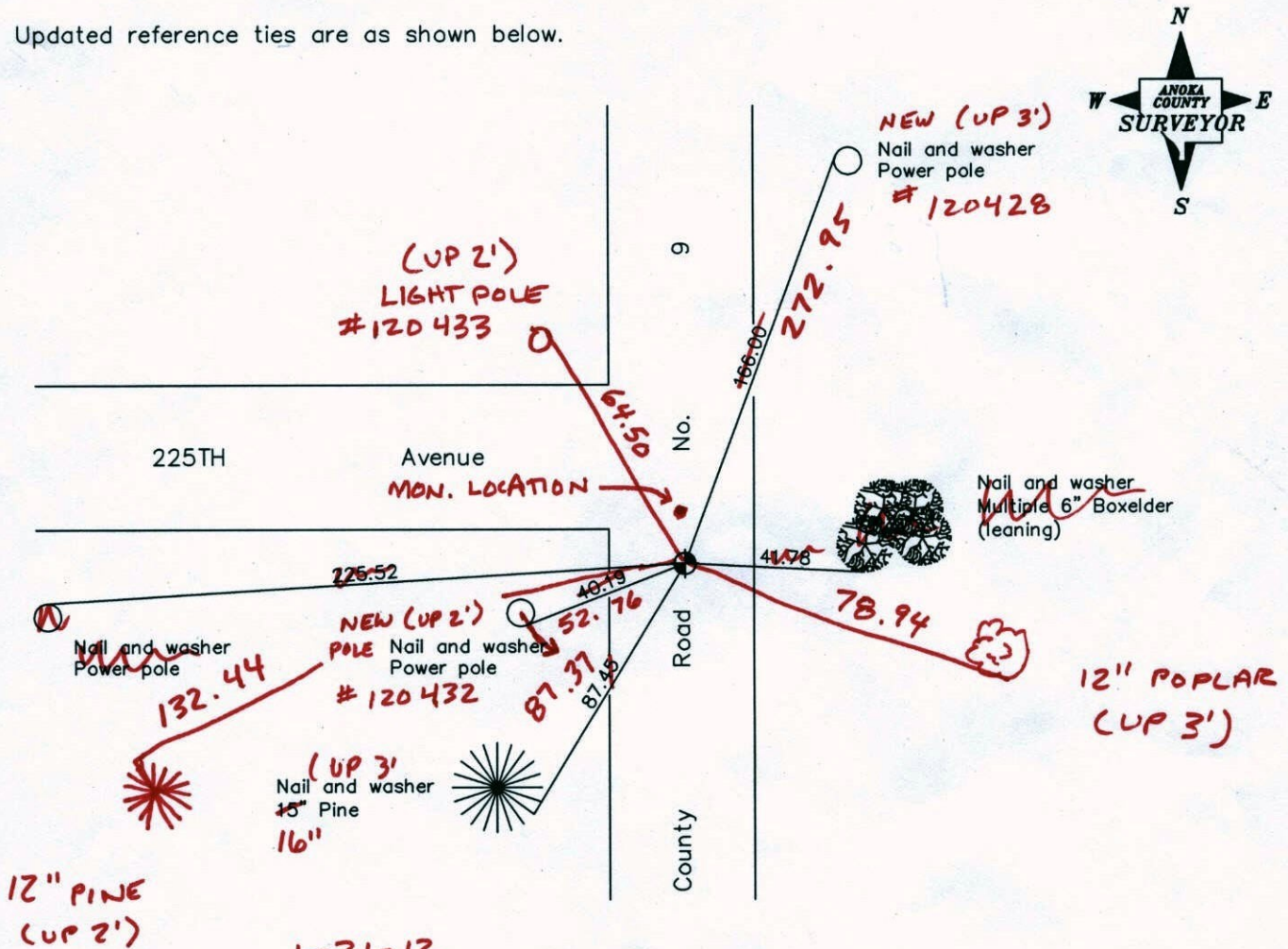
East 1/4 Corner of Sec. 5 Township 33 Range 24

On the 4th day of June, 1965, the described corner was evidenced by _____

and to perpetuate the location of said corner, at the exact location thereof, a permanent marker was placed consisting of a cast iron monument (2' ± E. of E) (DOWN 0.2' ±)

AND on the ___ day of _____, _____, said permanent marker was _____

Updated reference ties are as shown below.



12" PINE (UP 2')

(UP 3') Nail and washer 15" Pine 16"

1-31-12 BK-SS T/T-VRS

Revised date
7/06/92
6/03/97
4/24/01

N.A.D. 1983 Coordinates (1996 Adjustment)	
County Project Coordinates	
Northing	224905.1946
Easting	479235.4401
Date	4/24/01

I hereby certify that this United States public land survey monument record is correct and complete to the best of my knowledge and belief.

_____, Anoka County Surveyor

Minnesota License Number _____

VRS 3D = 0.06

N = 224905.1547

E = 479235.3473

CERTIFICATE OF LOCATION OF GOVERNMENT CORNER

County of Anoka

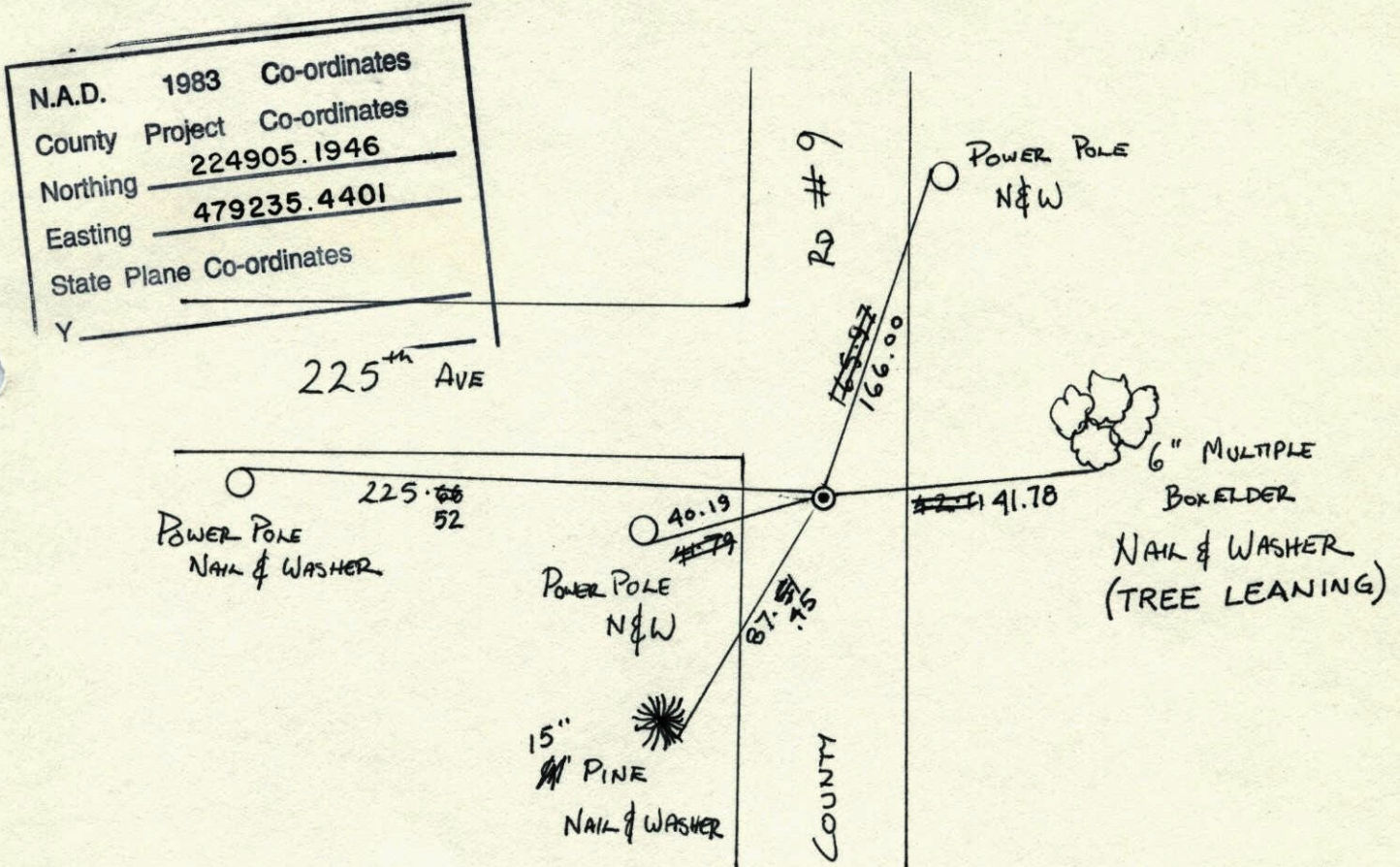
State of Minnesota

EAST 1/4 Corner of Sec. 5 Township 33 Range 24

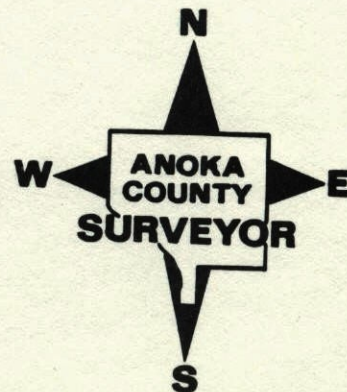
I hereby certify that on the 4th day of JUNE, 19 65, I found the described corner which was evidenced by _____

and I further certify that to perpetuate the location of said corner, I did, at the exact location thereof, place a permanent marker consisting of CAST IRON MONUMENT

which reference or witness monuments are located in the manner following:

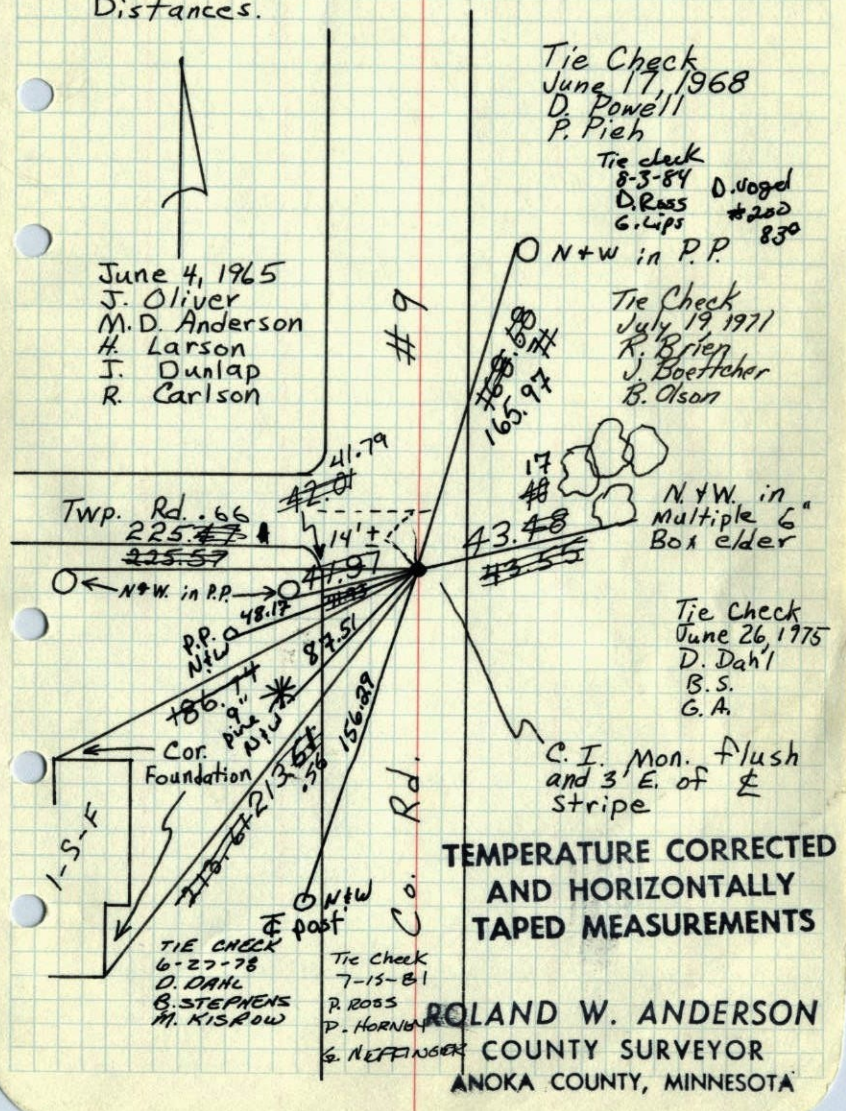


Revised date	Revised date	Revised date
7-21-87		
7-6-92		
6-3-97		
4-24-01		



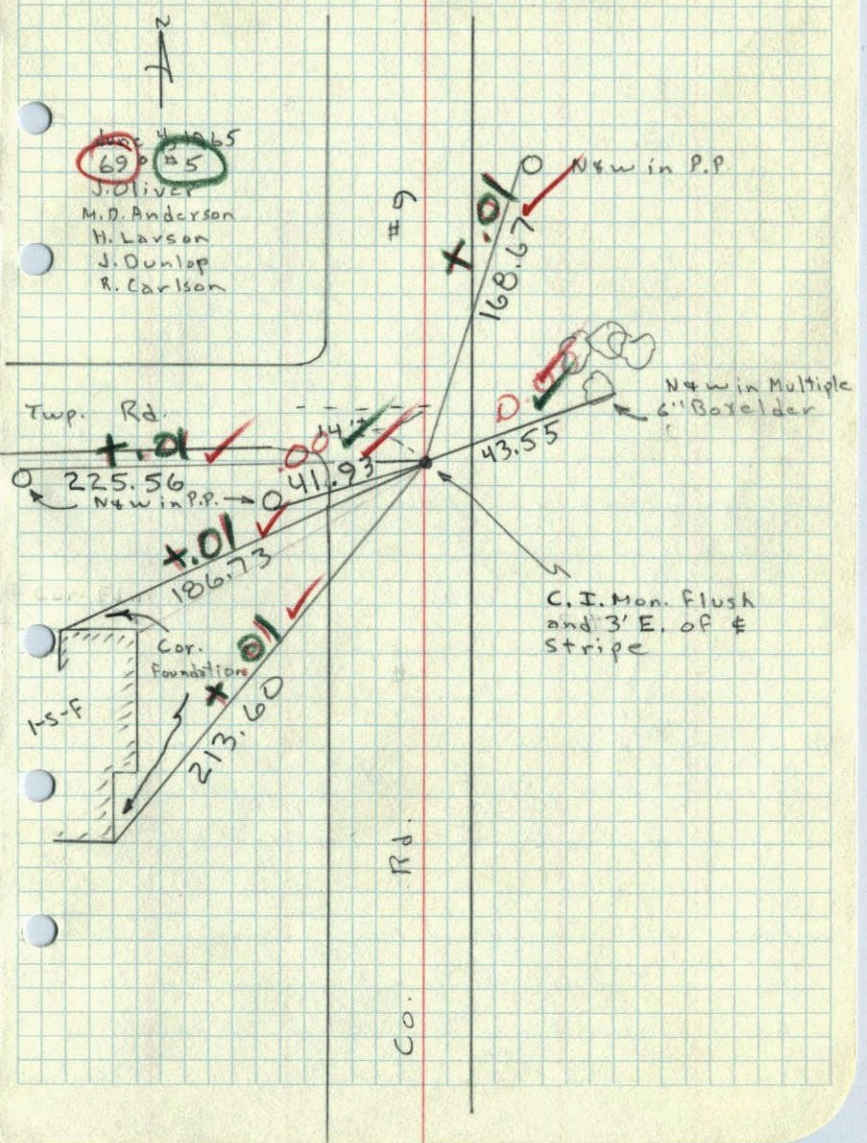
E 1/4 Cor. Sec. 5, T33, R24

Set Cast Iron Monument on line between Section Corners at proration of Govt. Distances.



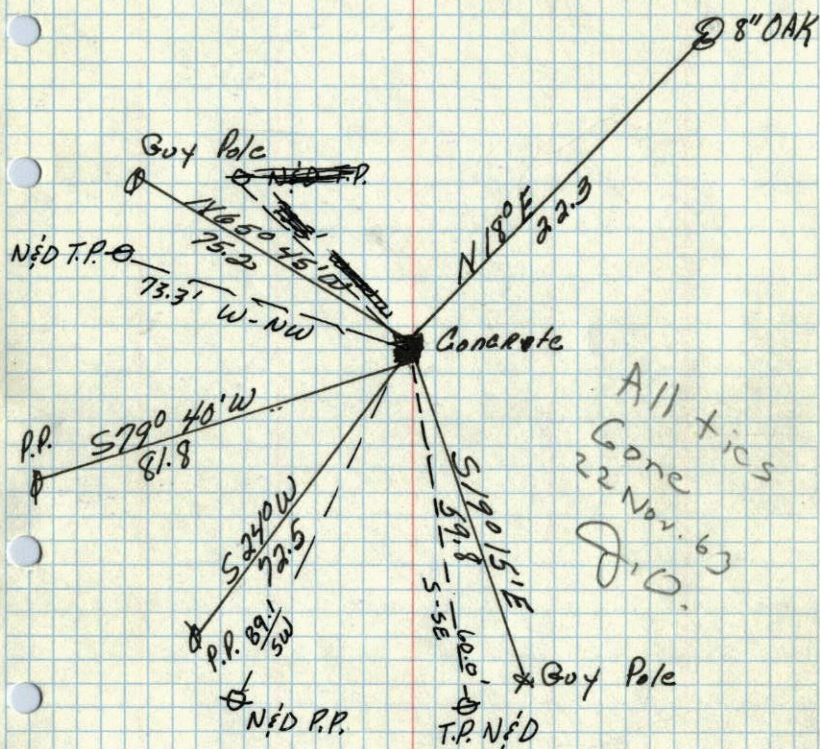
E 1/4 Cor. Sec. 5, T33, R24

Set Cast Iron Monument on line between Section Corners at proration of Govt. Dist's.



E 1/4 cor. of Sec. 5 T. 33 R. 24
 Cone. Mon.

Retied
 V.V.



Sept. 30, 1946
 Cartwright

E 1/4 sec. 5 T. 33 R. 24

