

# CERTIFICATE OF LOCATION OF GOVERNMENT CORNER

County of Anoka

State of Minnesota

West 1/4 Corner of Sec. 3 Township 33 Range 24

On the 8th day of December, 1970, the described corner was evidenced by area resurvey

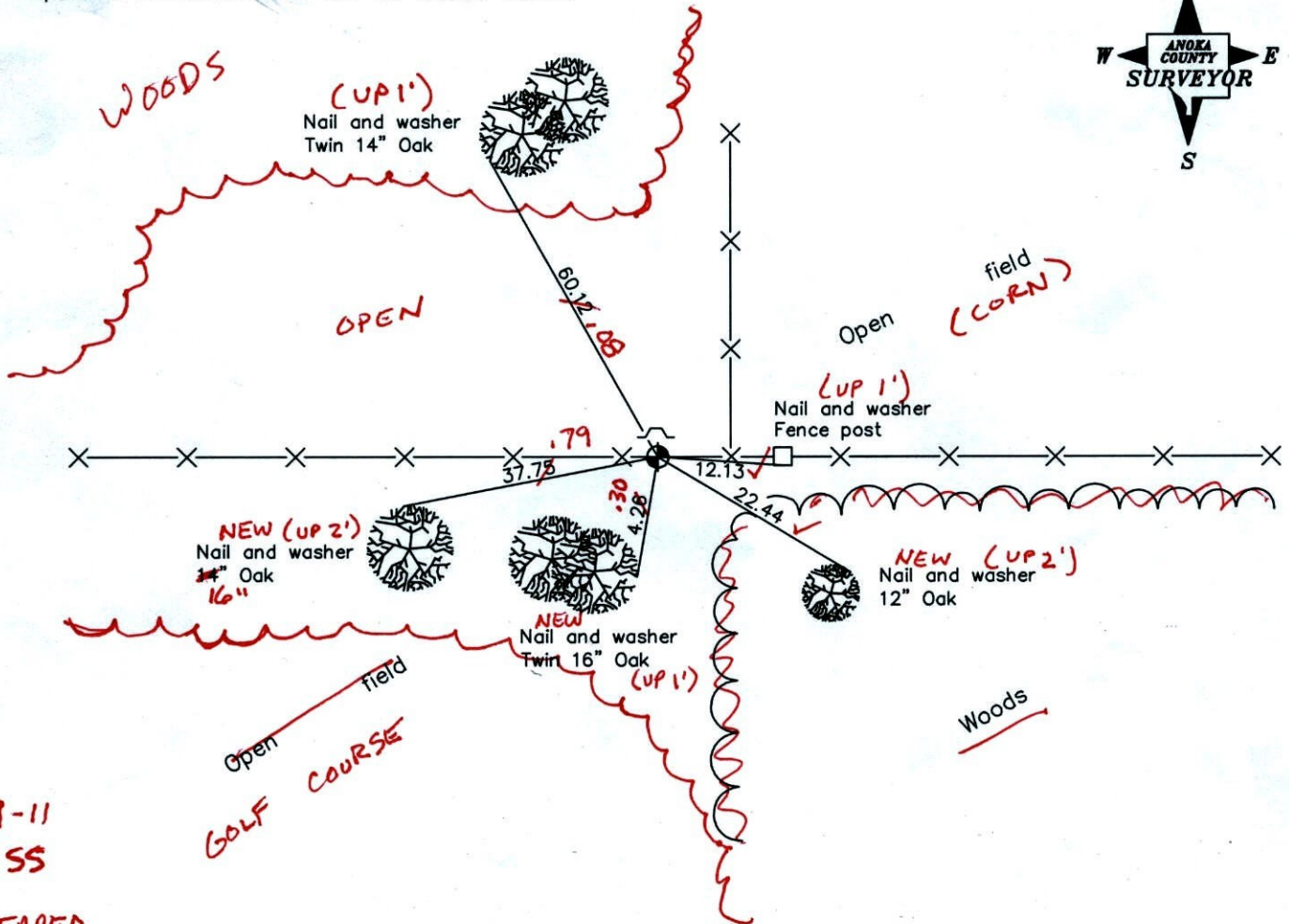
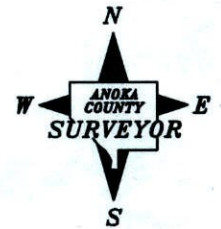
and to perpetuate the location of said corner, at the exact location thereof, a permanent marker was placed consisting of a cast iron monument with a sign and post on the north side

↑  
NEEDS NEW SIGN

REPLACED SIGN (3/30/12)

AND on the \_\_\_ day of \_\_\_\_\_, \_\_\_\_\_, said permanent marker was \_\_\_\_\_

Updated reference ties are as shown below.



9-9-11  
BK-SS  
TAPED

Revised date
6/12/97
4/24/01

N.A.D. 1983 Coordinates (1996 Adjustment)	
County Project Coordinates	
Northing	<u>224838.9643</u>
Easting	<u>484490.3176</u>
Date	<u>4/24/01</u>

I hereby certify that this United States public land survey monument record is correct and complete to the best of my knowledge and belief.

\_\_\_\_\_  
Date \_\_\_\_\_  
\_\_\_\_\_, Anoka County Surveyor

Minnesota License Number \_\_\_\_\_

# CERTIFICATE OF LOCATION OF GOVERNMENT CORNER

County of Anoka

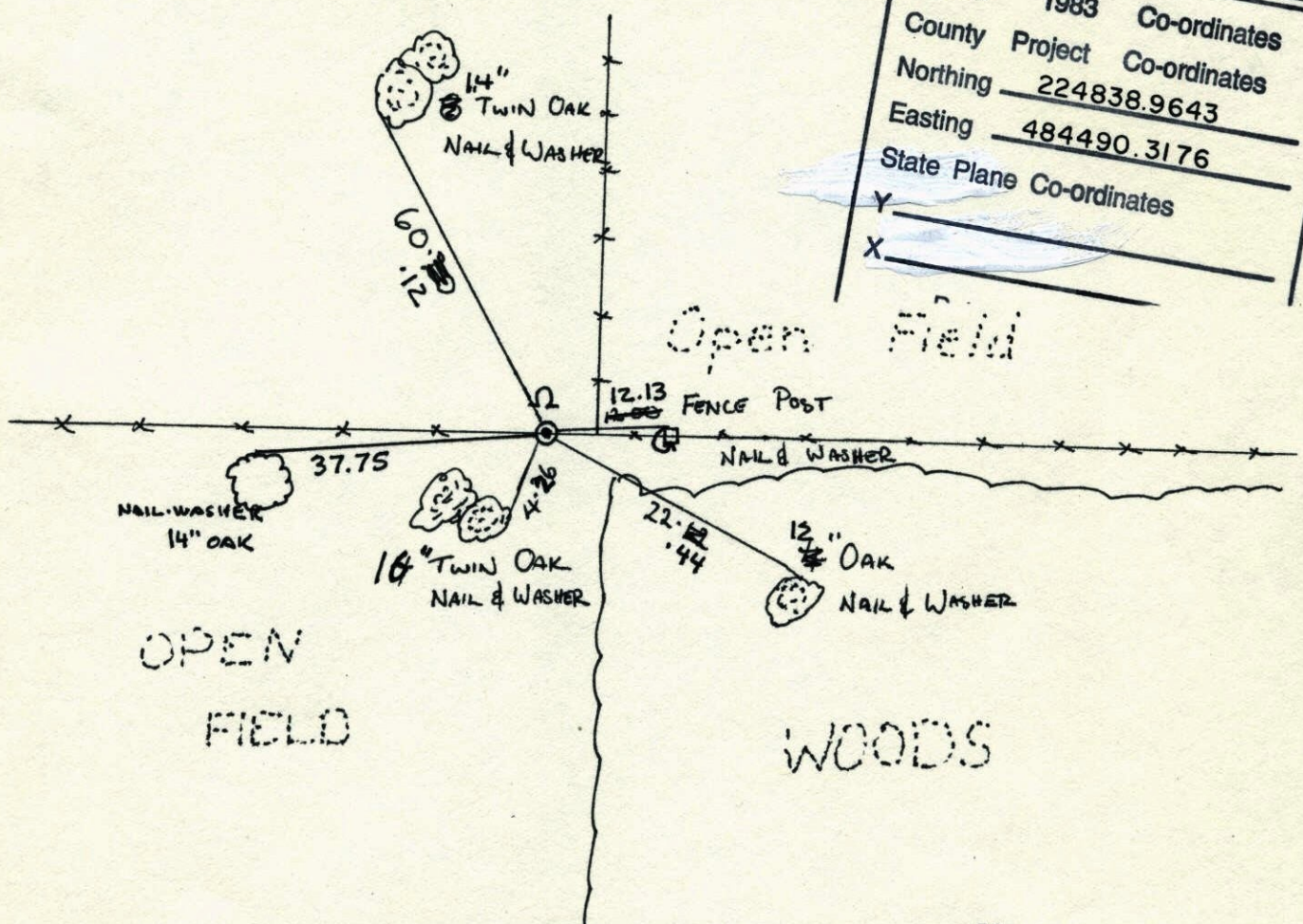
State of Minnesota

WEST 1/4 Corner of Sec. 3 Township 33 Range 24

I hereby certify that on the 8<sup>th</sup> day of DECEMBER, 1970, I found the described corner which was evidenced by AREA RESURVEY

and I further certify that to perpetuate the location of said corner, I did, at the exact location thereof, place a permanent marker consisting of CAST IRON MONUMENT SIGN & POST ON  
NORTH SIDE OF MONUMENT

which reference or witness monuments are located in the manner following:



N.A.D. 1983 Co-ordinates  
 County Project Co-ordinates  
 Northing 224838.9643  
 Easting 484490.3176  
 State Plane Co-ordinates  
 Y \_\_\_\_\_  
 X \_\_\_\_\_

Revised date	Revised date	Revised date
6-12-97		
4-24-01		

