

CERTIFICATE OF LOCATION OF GOVERNMENT CORNER

County of Anoka

State of Minnesota

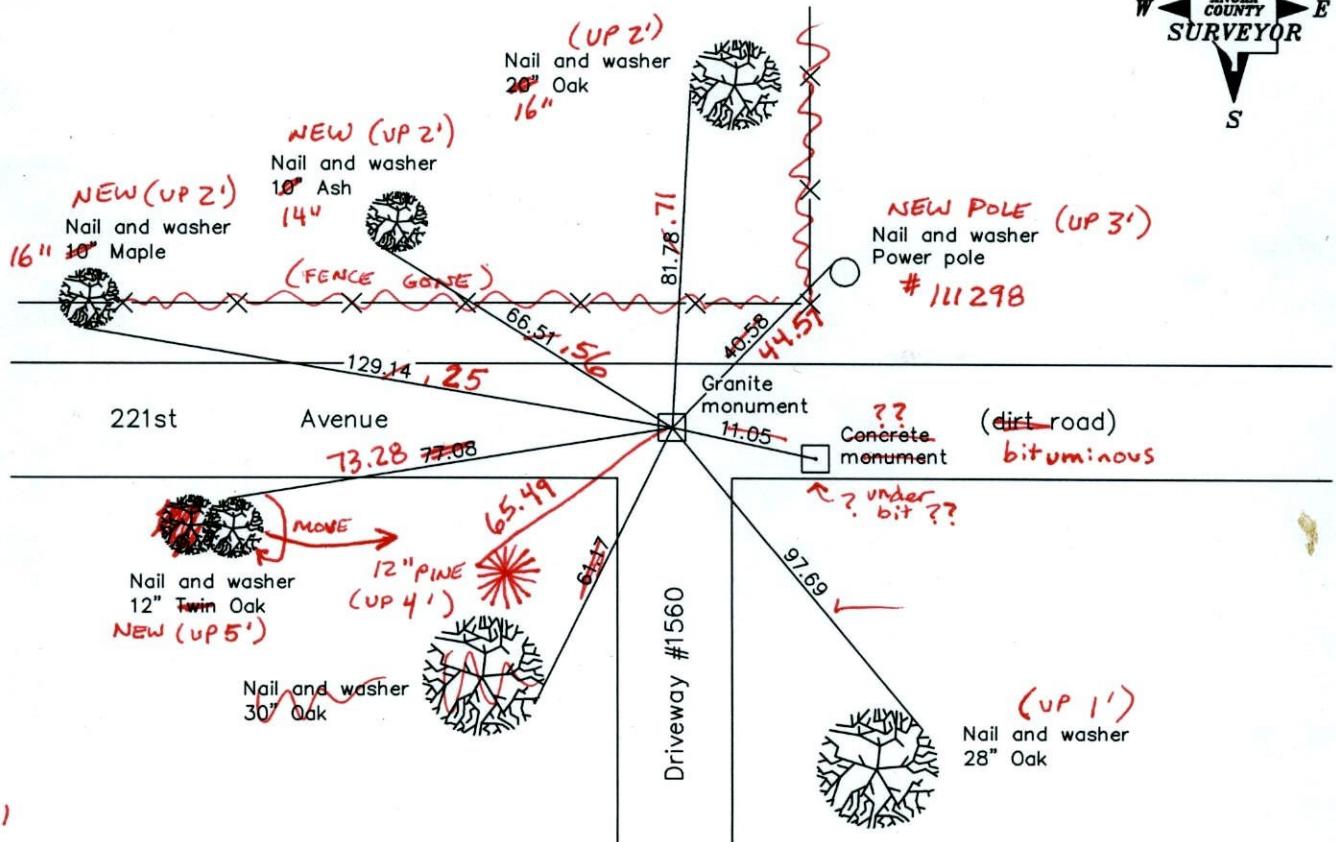
Northeast Corner of Sec. 10 Township 33 Range 24

On the 5th day of March, 1962, the described corner was evidenced by a granite monument

and to perpetuate the location of said corner, at the exact location thereof, a permanent marker was placed consisting of the above described granite monument - CAST IRON - MONUMENT

AND on the ___ day of _____, _____, said permanent marker was _____

Updated reference ties are as shown below.



9-7-11
BK - SS
T/A - VRS

Revised date

7/01/92
6/02/97
4/01/02

N.A.D. 1983 Coordinates
(1996 Adjustment)

County Project Coordinates	
Northing	<u>222184.4639</u>
Easting	<u>489705.3260</u>
Date	<u>4/20/01</u>

I hereby certify that this United States public land survey monument record is correct and complete to the best of my knowledge and belief.

Date _____
_____, Anoka County Surveyor
Minnesota License Number _____

VRS 3D = 0.06

N = 222184.470

E = 489705.319

CERTIFICATE OF LOCATION OF GOVERNMENT CORNER

County of Anoka

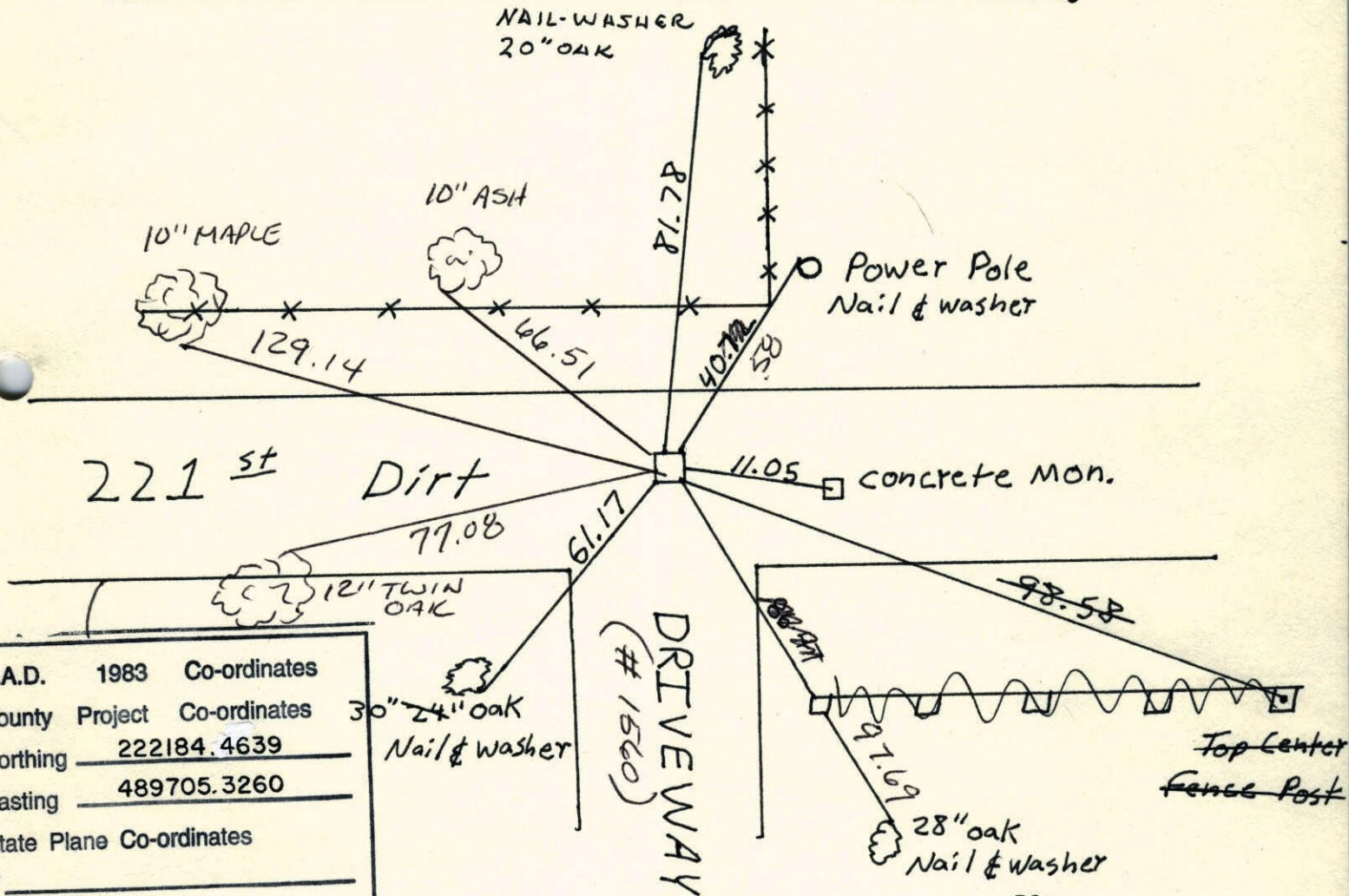
State of Minnesota

NORTHEAST Corner of Sec. 10 Township 33 Range 24

I hereby certify that on the 5th day of MARCH, 1962, I found the described corner which was evidenced by GRANITE & CONCRETE MON.

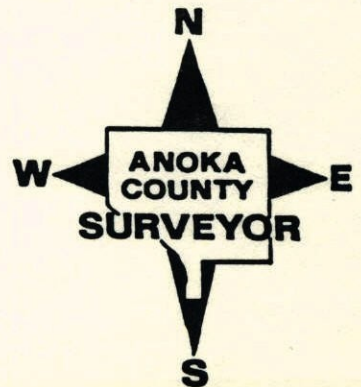
and I further certify that to perpetuate the location of said corner, I did, at the exact location thereof, place a permanent marker consisting of SAME

which reference or witness monuments are located in the manner following:



N.A.D.	1983	Co-ordinates
County Project	Co-ordinates	
Northing	<u>222184.4639</u>	
Easting	<u>489705.3260</u>	
State Plane	Co-ordinates	
Y		
X		

Revised date	Revised date	Revised date
<u>6-12-68</u>	<u>6-2-97</u>	
<u>7-20-71</u>	<u>4-1-02</u>	
<u>6-27-78</u>		
<u>7-23-81</u>		
<u>8-8-84</u>		
<u>7-16-87</u>		
<u>7-1-92</u>		



DRIVEWAY

CERTIFICATE OF LOCATION OF GOVERNMENT CORNER

County of Anoka

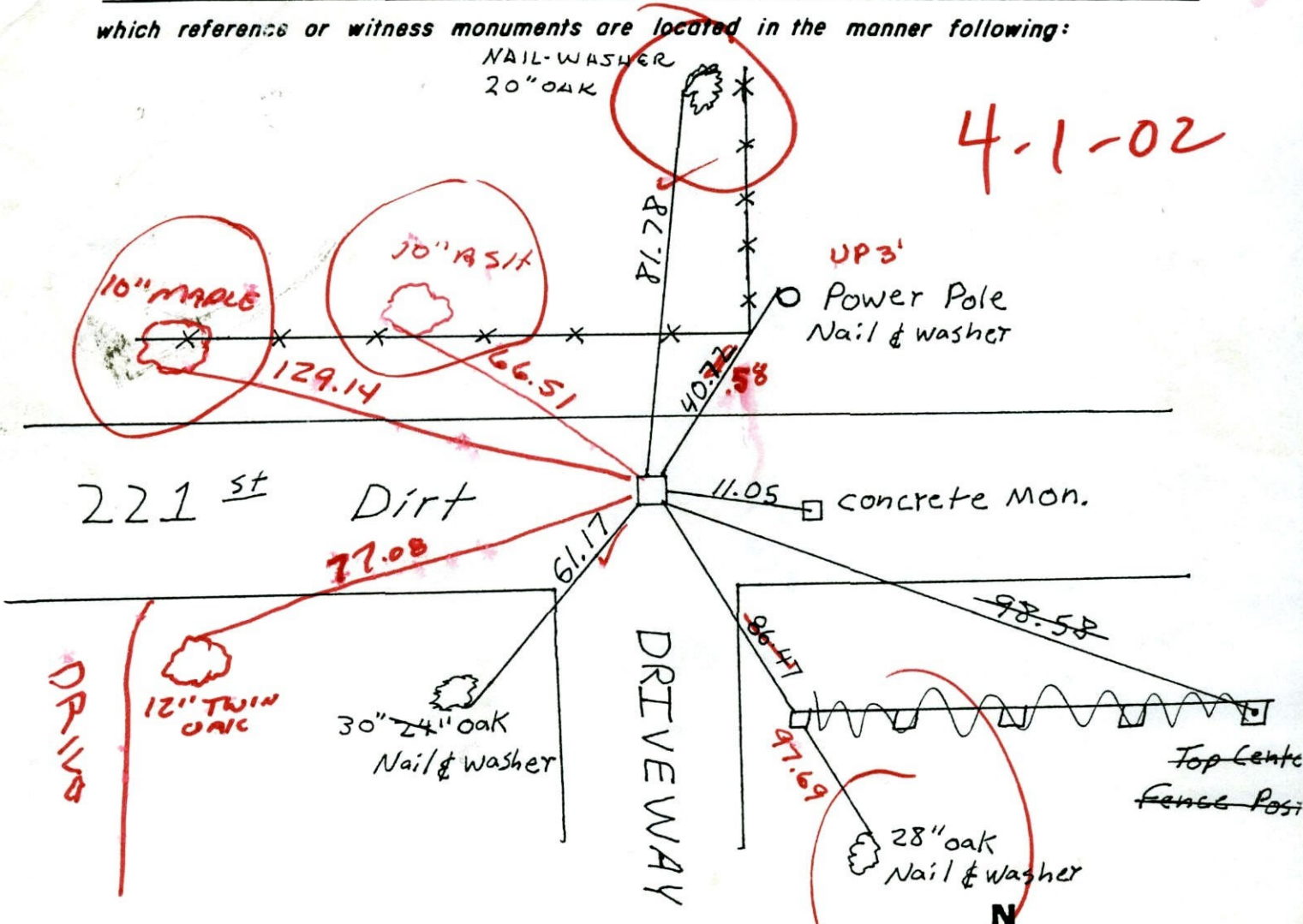
State of Minnesota

NORTHEAST Corner of Sec. 10 Township 33 Range 24

I hereby certify that on the 5th day of MARCH, 1962, I found the described corner which was evidenced by GRANITE & CONCRETE MON.

and I further certify that to perpetuate the location of said corner, I did, at the exact location thereof, place a permanent marker consisting of SAME

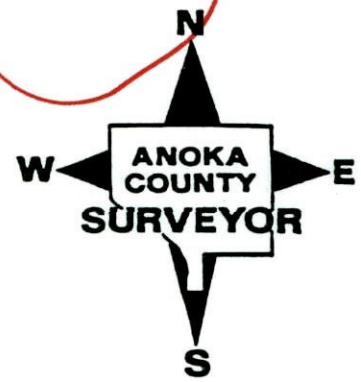
which reference or witness monuments are located in the manner following:



4-1-02

#1560

Revised date	Revised date	Revised date
6-12-68	6-2-97	
7-20-71		
6-27-78		
7-23-81		
8-8-84		
7-16-87		
7-1-92		



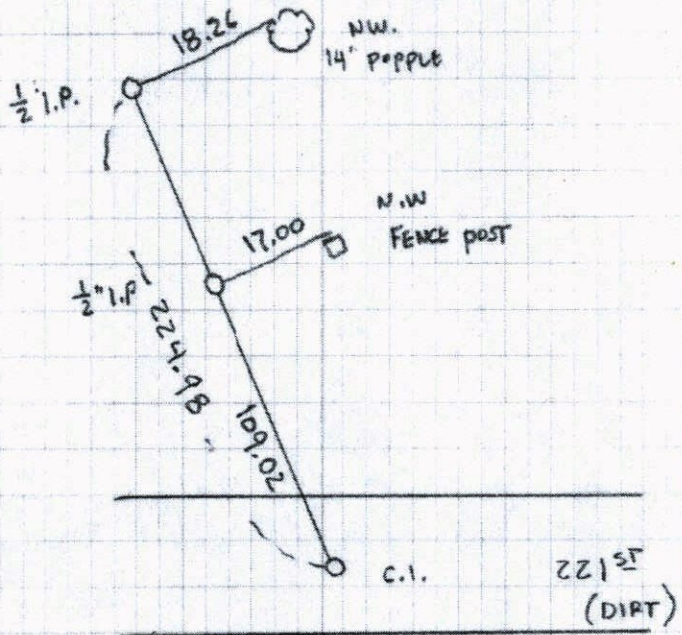
TRANSIT TIE

25

NE COR SEC 10 T 33 R 24

RETIED GRANITE MON.

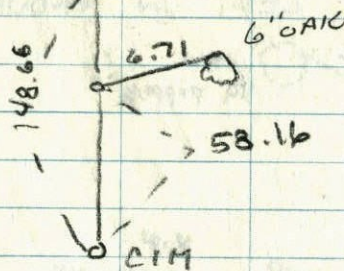
DOWN 2' LEFT IN GROUND.



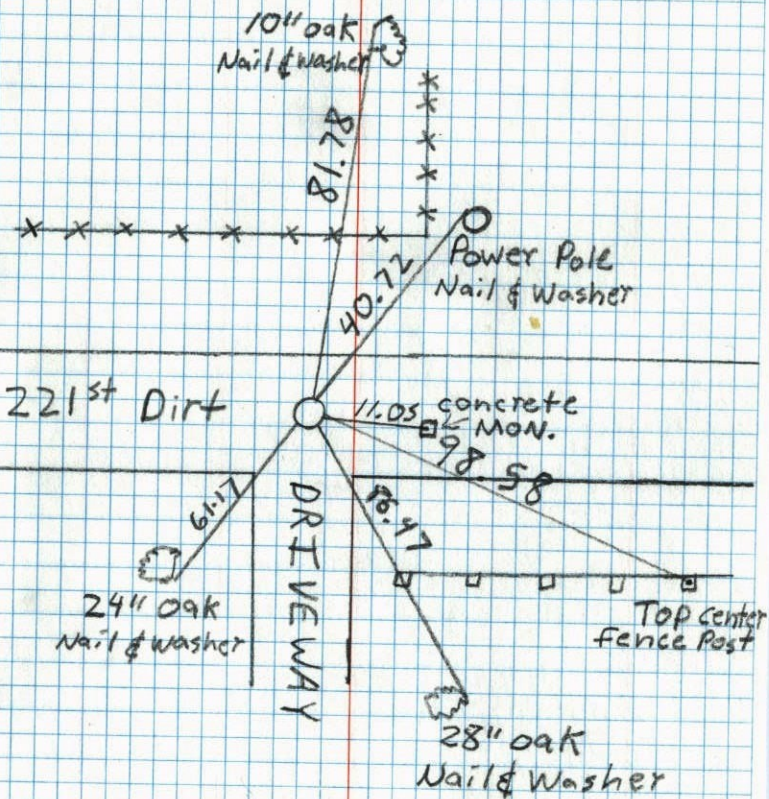
4-1-02
J. SIMMER
B. KLEMMZ



10" ELM 3RD MON



N.E. 1/4 S.10 T33 R24
 RETIED GRANITE MON.



7-1-92
 Jayme A.
 Tony Z.
 Harold L.

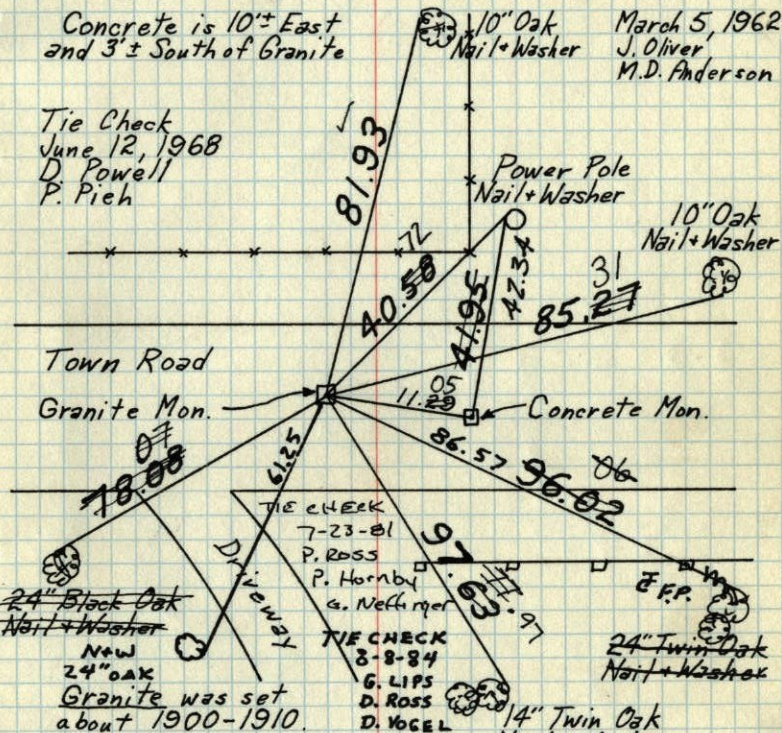
NE Cor. Sec. 10-T33-R24

Granite Monument with top broken off,
 down 1'± with bridge spike set on top. Also
 4" Square Concrete Monument with top broken
 off, flush. Concrete has been moved slightly.

Concrete is 10'± East
 and 3'± South of Granite

March 5, 1962
 J. Oliver
 M.D. Anderson

Tie Check
 June 12, 1968
 D. Powell
 P. Pich



Concrete was set by
 Cartwright about 1943-1948.
 Tie Check
 June 26, 1975
 D. Dan'l
 B.S. O.A.

Tie Check
 July 20, 1971
 R. Brick
 J. Boettcher
 B. Olson

TIE CHECK
 6-27-78
 D. DANL
 B. STEPHENS
 M. KISREW

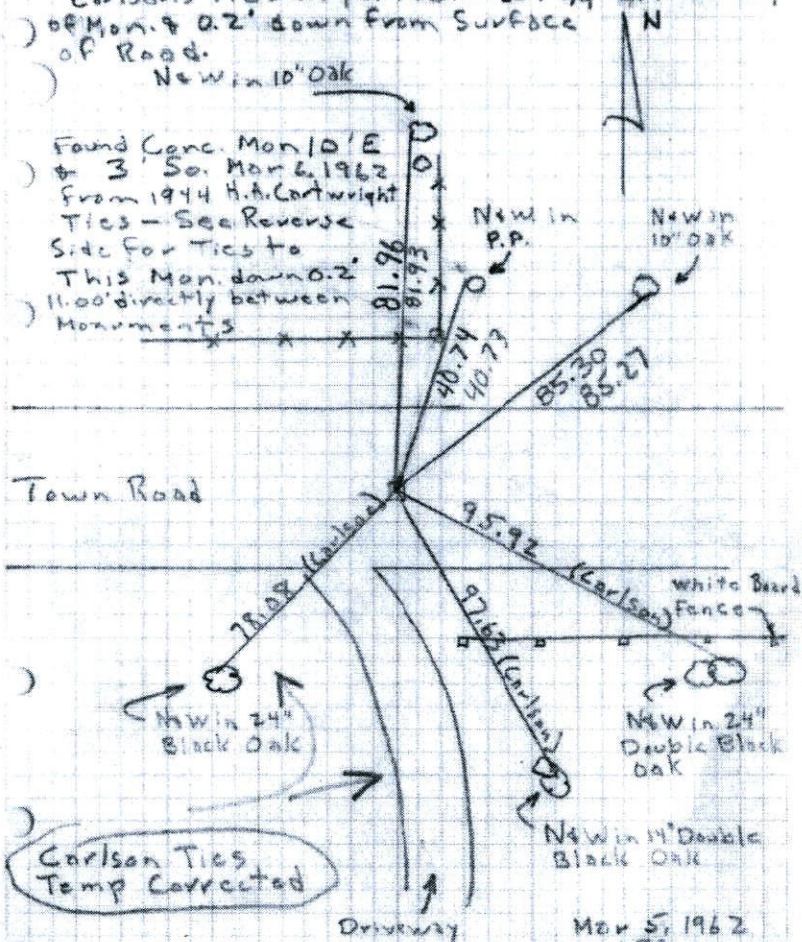
TEMPERATURE CORRECTED
 AND HORIZONTALLY
 TAPED MEASUREMENTS

ROLAND W. ANDERSON
 COUNTY SURVEYOR
 ANOKA COUNTY, MINNESOTA

19
NE Cor. Sec 10, T 33, R 24

Found Gran. Mon. with Top broken off down 2'.
Carlson's Tics - hit perfect - set 3/4" I.P. on Top
of Mon. & 0.2' down from Surface of Road.

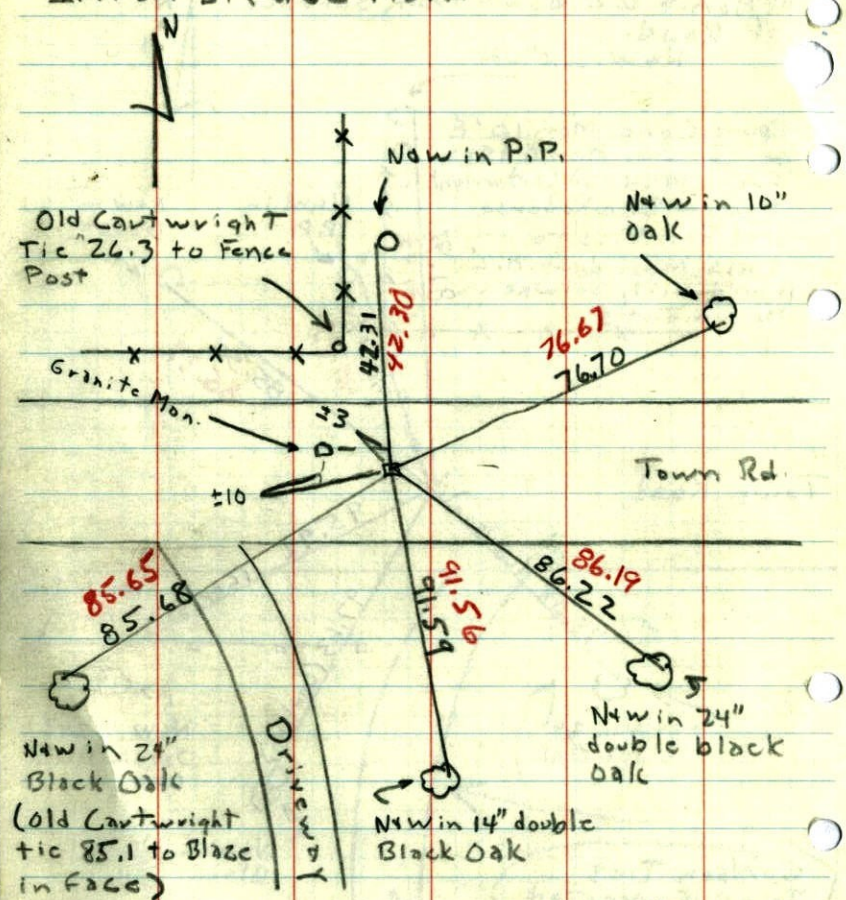
New in 10" Oak
Found Conc. Mon. 10' E
& 3' So. Mar 6, 1962
From 1944 H.A. Cartwright
Tics - See Reverse
Side for Tics to
This Mon. down 0.2'
11.00' directly between
Monuments



Carlson Tics
Temp Corrected

Mar 5, 1962
15°
J. Oliver
J. Zoeller
K. Christenson
L. Hansen

Tics For Conc. Mon. (Top Broken off)
~~Set 3/4" I.P. on No. Face.~~
I.P. on E. Face Mon.



(11.00' Meas directly
between Monuments)

6 Mar 62
15°
J. Oliver
M.D. Anderson
J. Zoeller
L. Hansen

Position of concrete with respect to ties.

NE Cor. Sec. 10-T33-R24

