

CERTIFICATE OF LOCATION OF GOVERNMENT CORNER

County of Anoka

State of Minnesota

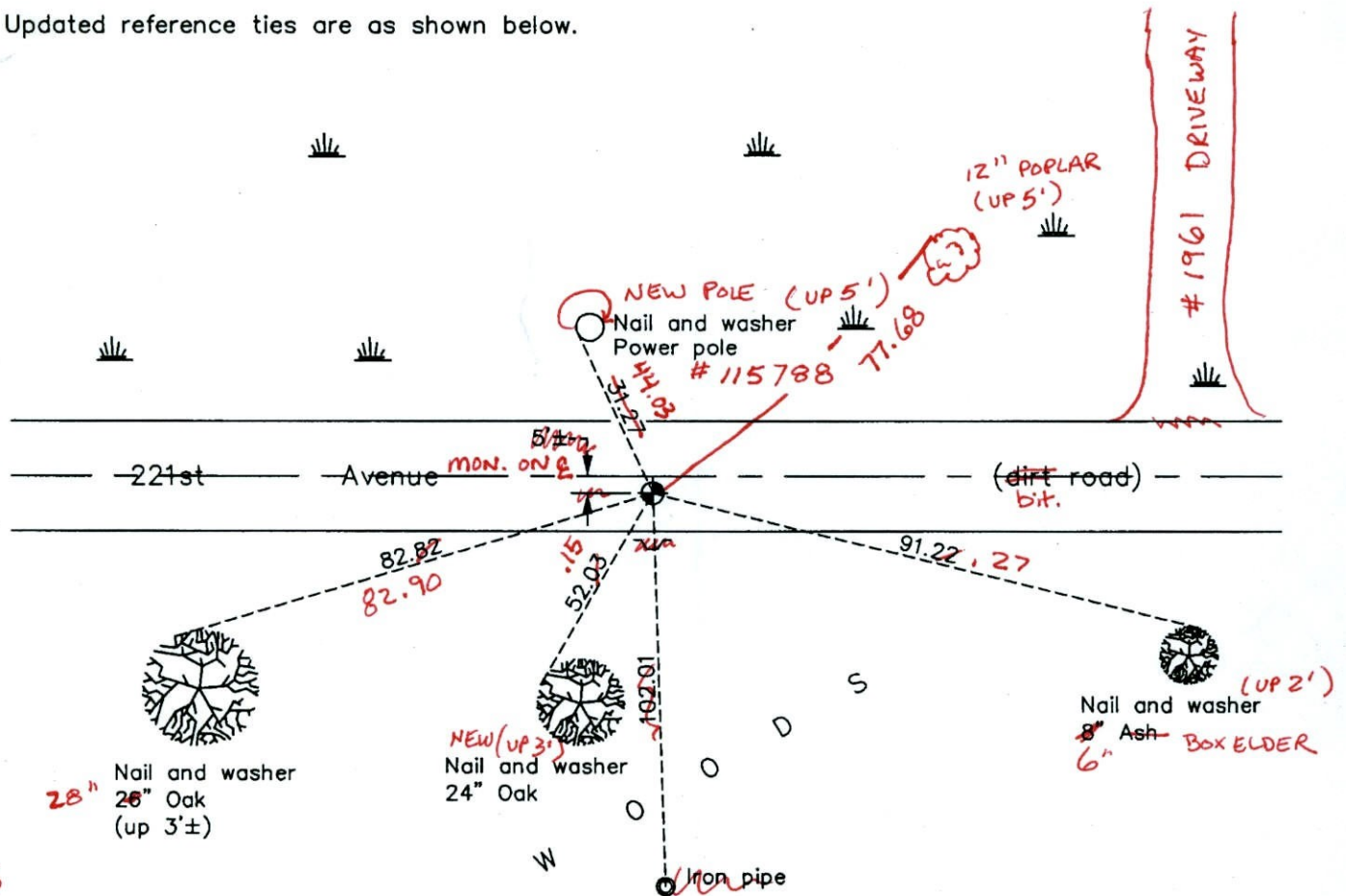
North 1/4 Corner of Sec. 10 Township 33 Range 24

On the 26th day of November, 1963, the described corner was evidenced by a concrete monument

and to perpetuate the location of said corner, at the exact location thereof, a permanent marker was placed consisting of a cast iron monument with a sign and post on south side of road (on center line) ↗ no sign & post

AND on the 12th day of August, 2003, said permanent marker was replaced with a new cast iron monument and the ties were updated

Updated reference ties are as shown below.



9-7-11
BK-SS
T/T - VRS

N
W ANOKA COUNTY SURVEYOR E
S

Revision Date
12/06/10

N.A.D. 1983 Coordinates
(1996 Adjustment)

County Project Coordinates	
Northing	222183.8263
Easting	487086.8167
Date	4/20/01

I hereby certify that this United States public land survey monument record is correct and complete to the best of my knowledge and belief.

Larry D. Hoium Date 12/06/10

Larry D. Hoium, Anoka County Surveyor
Minnesota License Number 18165

VRS 3D = 0.07 N = 222183.839 E = 487086.804

CERTIFICATE OF LOCATION OF GOVERNMENT CORNER

County of Anoka

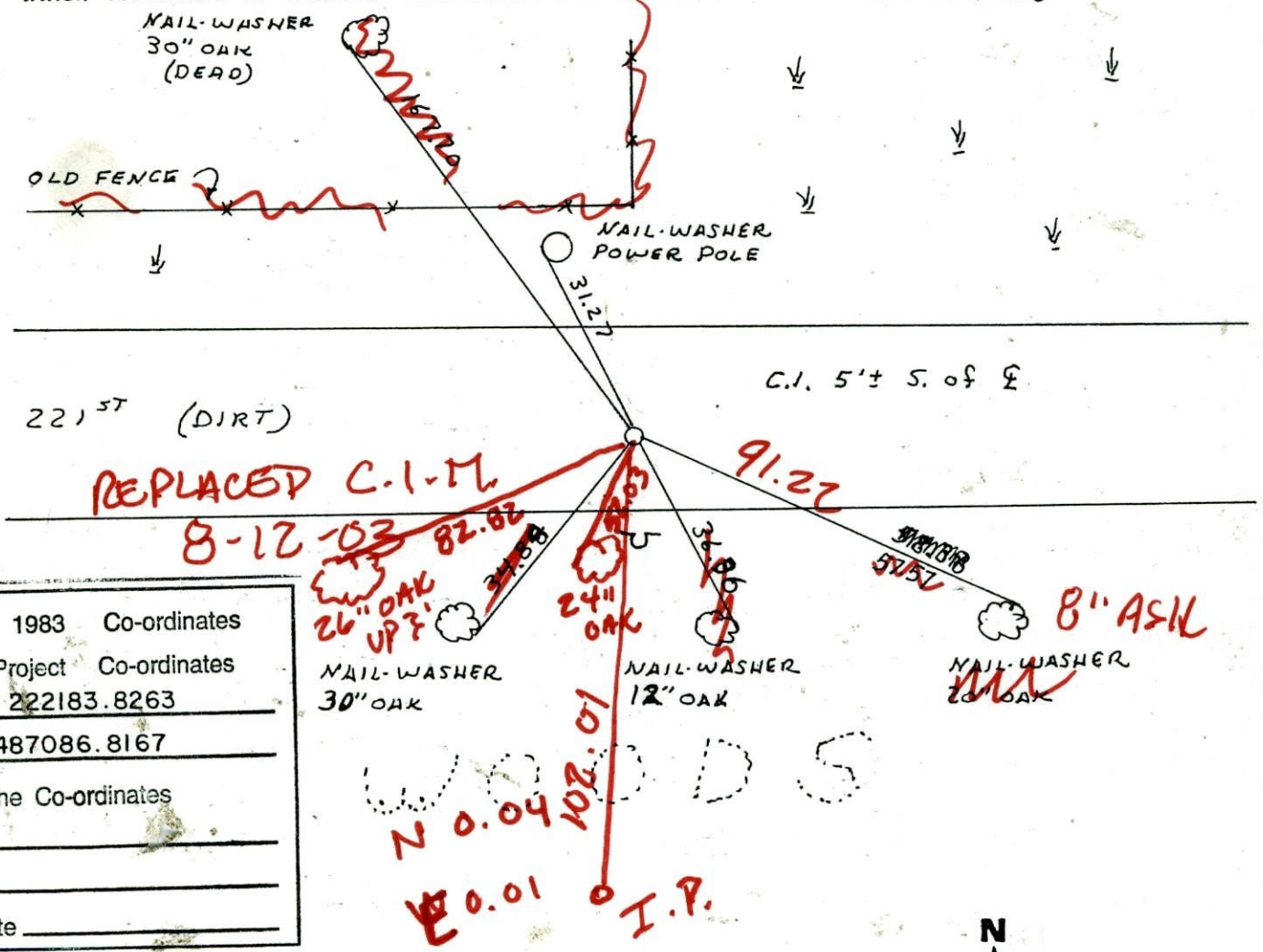
State of Minnesota

NORTH 1/4 Corner of Sec. 10 Township 33 Range 24

I hereby certify that on the 26TH day of NOV., 1963, I found the described corner which was evidenced by CONCRETE MONUMENT

and I further certify that to perpetuate the location of said corner, I did, at the exact location thereof, place a permanent marker consisting of CAST IRON MONUMENT SIGN AND POST ON SOUTH SIDE OF ROAD

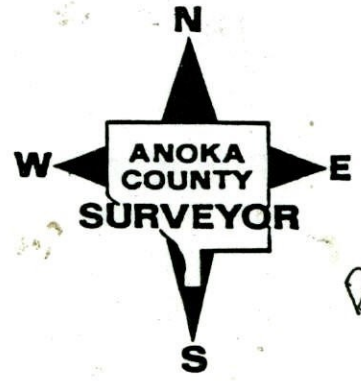
which reference or witness monuments are located in the manner following:



N.A.D.	1983	Co-ordinates
County	Project	Co-ordinates
Northing	<u>222183.8263</u>	
Easting	<u>487086.8167</u>	
State Plane Co-ordinates		
Y	_____	
X	_____	
Date	_____	

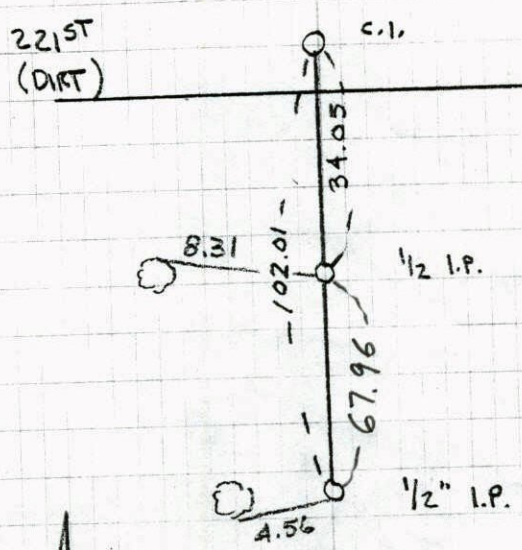
Revised date	Revised date	Revised date
6-27-78		
7-15-81		
8-8-84		
7-1-92		
6-3-97		

REPLACED (BROKEN)



Dove
12/26/10
LH

TRANSIT TIE 26
 N¹/₄ COR SEC 10 T33 R24
 TIED & PULLED C.I.M.
 FOR ROAD CONST



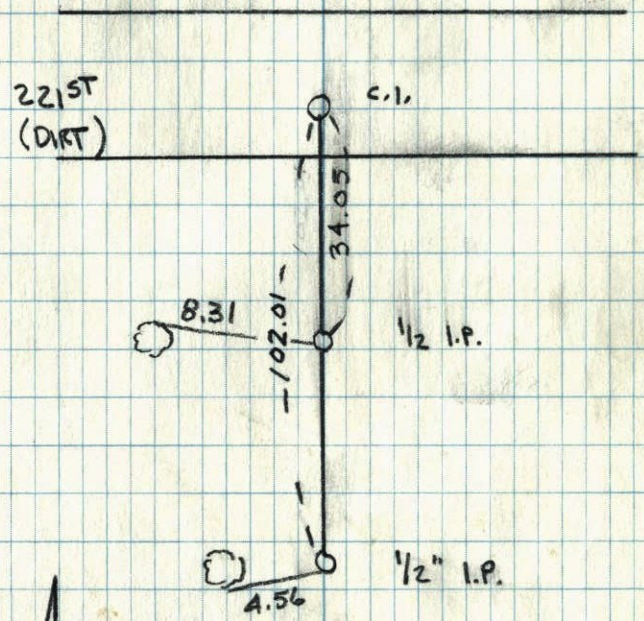
4-1-02
 J. SIMMER
 B. KLEMM

91.91
 + 102.01
 34.05

 67.96

TRANSIT TIE 26
N¹/₄ COR SEC 10 T33 R24

TIED & PULLED C.I.M.
FOR ROAD CONST



4-1-02
J. SIMMER
B. KLENZ

CERTIFICATE OF LOCATION OF GOVERNMENT CORNER

County of Anoka

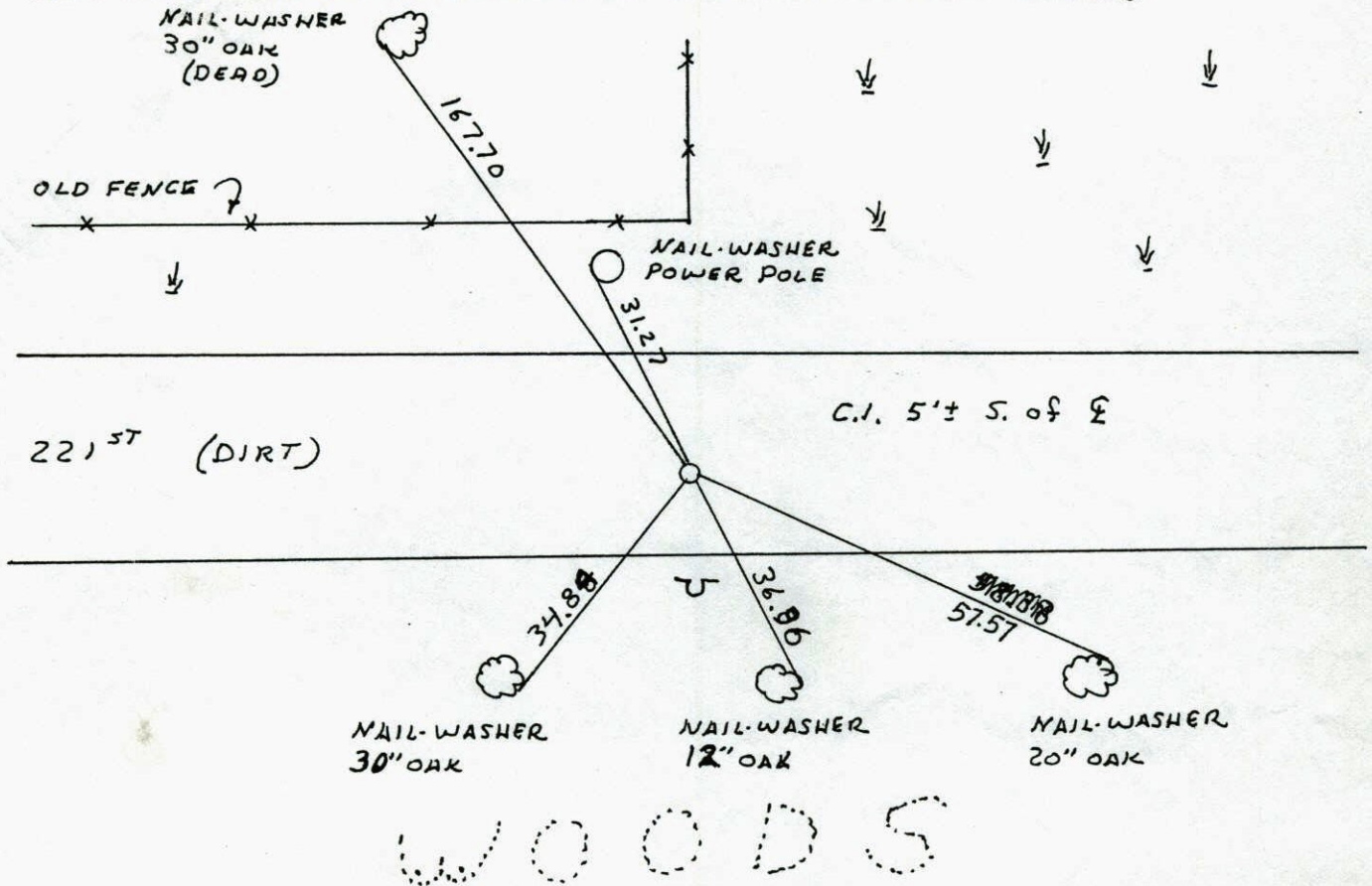
State of Minnesota

NORTH 1/4 Corner of Sec. 10 Township 33 Range 24

I hereby certify that on the 26TH day of NOV., 1963, I found the described corner which was evidenced by CONCRETE MONUMENT

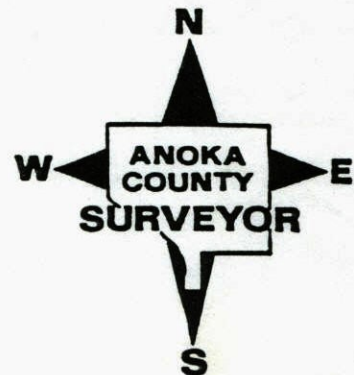
and I further certify that to perpetuate the location of said corner, I did, at the exact location thereof, place a permanent marker consisting of CAST IRON MONUMENT SIGN AND POST ON SOUTH SIDE OF ROAD

which reference or witness monuments are located in the manner following:



Revised date	Revised date	Revised date
6-27-78		
7-15-81		
8-8-84		
7-1-92		
6-3-97		

REPLACED
(BROKEN)



CERTIFICATE OF LOCATION OF GOVERNMENT CORNER

County of Anoka

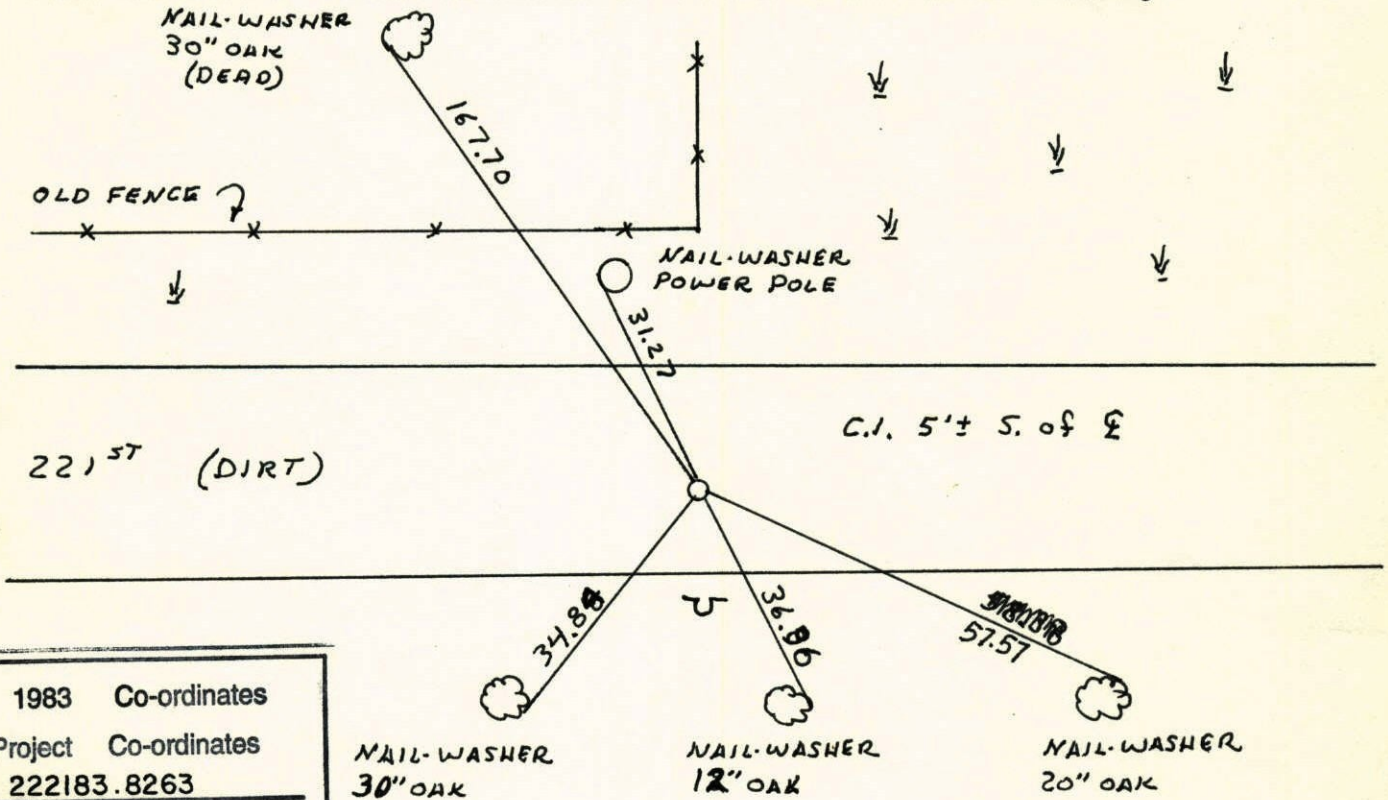
State of Minnesota

NORTH 1/4 Corner of Sec. 10 Township 33 Range 24

I hereby certify that on the 26TH day of NOV., 1963, I found the described corner which was evidenced by CONCRETE MONUMENT

and I further certify that to perpetuate the location of said corner, I did, at the exact location thereof, place a permanent marker consisting of CAST IRON MONUMENT SIGN AND POST ON SOUTH SIDE OF ROAD

which reference or witness monuments are located in the manner following:

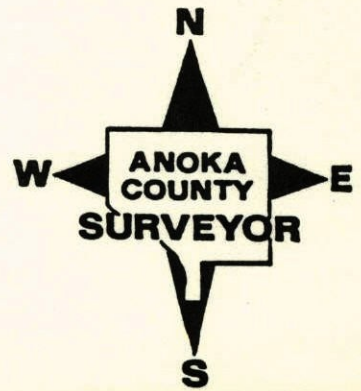


WOODS

N.A.D.	1983	Co-ordinates
County	Project	Co-ordinates
Northing	<u>222183.8263</u>	
Easting	<u>487086.8167</u>	
State Plane	Co-ordinates	
Y	_____	
X	_____	
Date	_____	

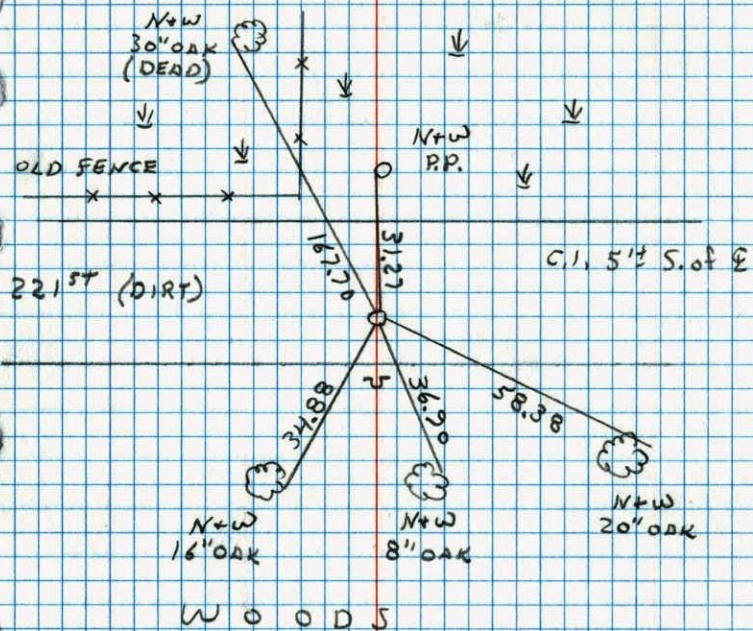
Revised date	Revised date	Revised date
6-27-78		
7-15-81		
8-8-84		
7-1-92		
6-3-97		

REPLACED (BROKEN)



N 1/4 CORNER SEC. 10 T33 R24

RETIRED CAST IRON MONUMENT
SIGN AND POST ON S. SIDE OF ROAD



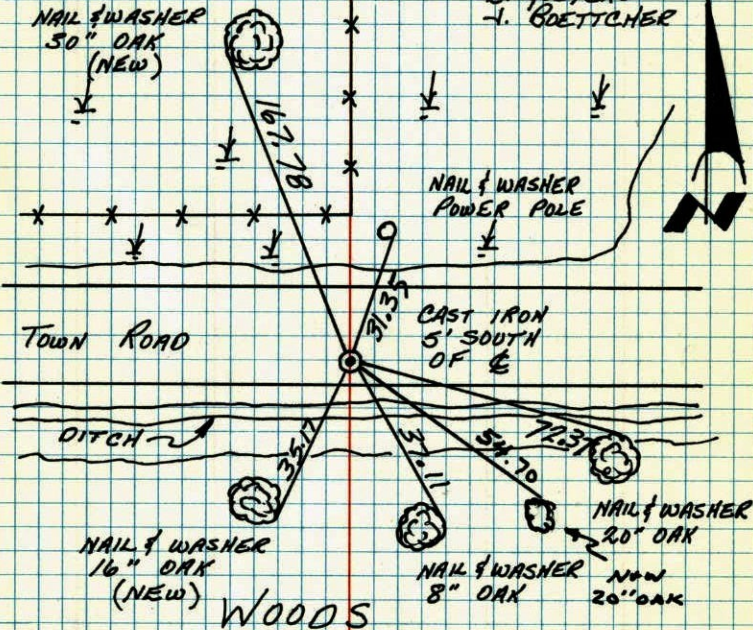
7-1-92
H. LARSON
T. ZIMMERSON
J. ANDERSON

N 1/4 CORNER, SECTION 10, T33, R24

FOUND 4" SQUARE CONCRETE MONUMENT (DOWN 0.1')

1/2" IRON PIPE ON NORTH FACE. 26 NOV 63
J. OLIVER
M. D. ANDERSON
E. MADSON

FOUND CAST IRON MONUMENT SET IN PLACE
OF CONCRETE 26 AUG 77 H. LARSON
B. GUETZKO
J. GOETZNER



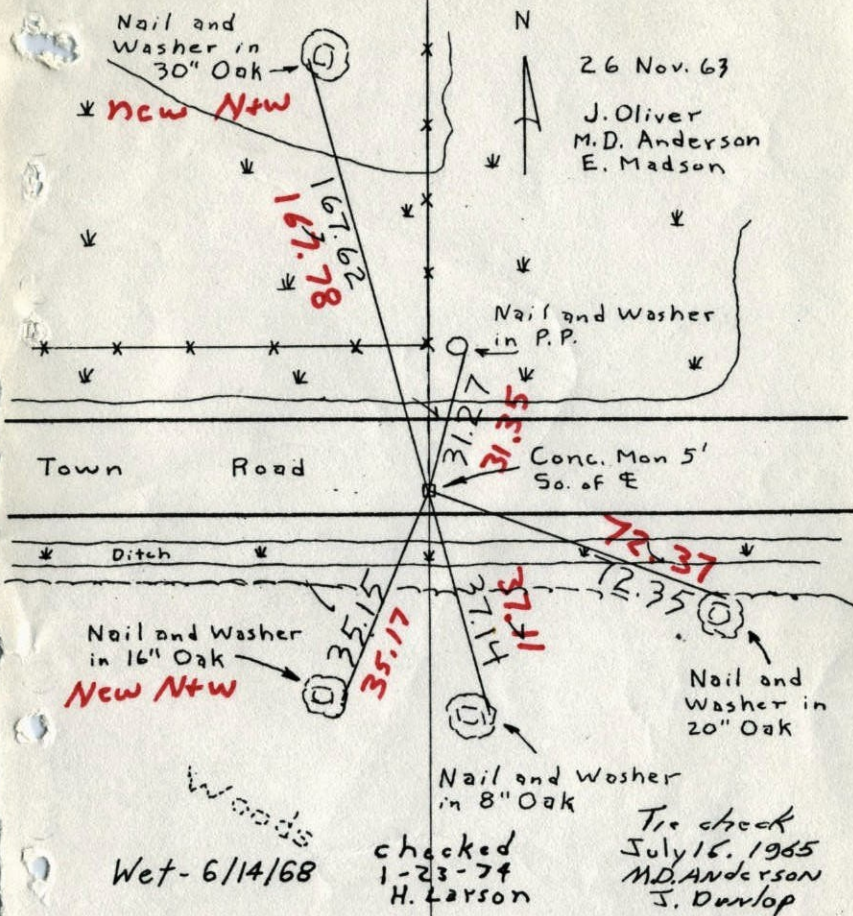
TIE CHECK
6-27-78
D. ORNL
B. STEPHENS
M. KISROW

TIE CHECK
7-15-81
P. ROSS
P. HORNBY
G. Neffinger

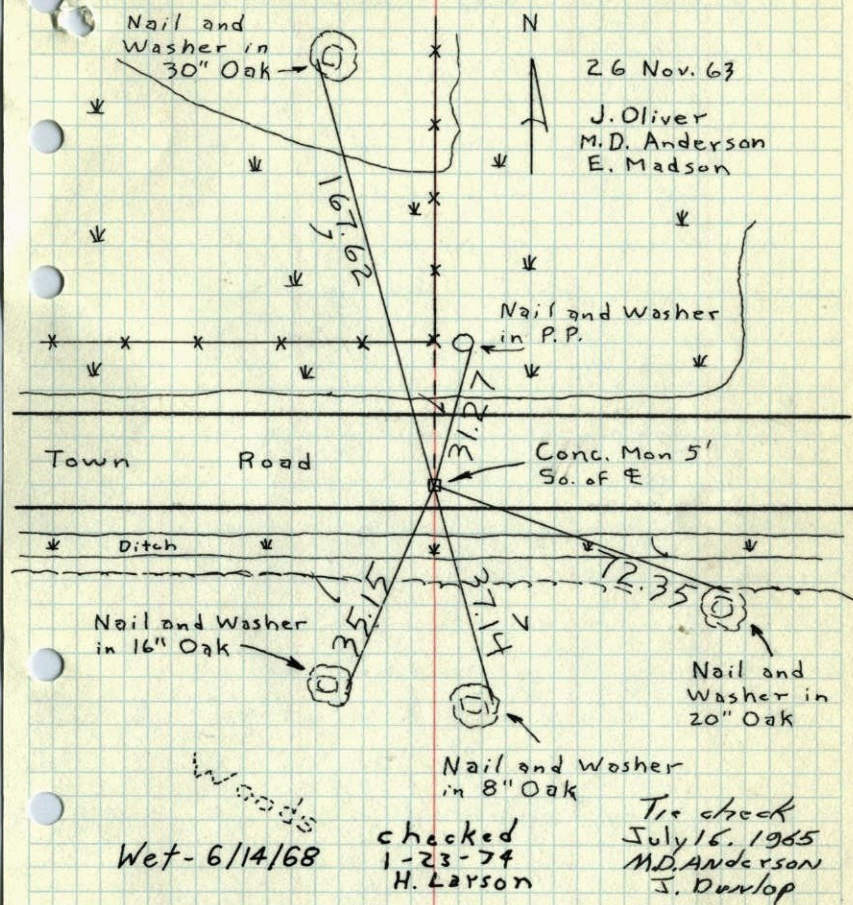
TIE CHECK
8-8-84
G. LIPS
D. ROSS
D. VOGEL

TEMPERATURE CORRECTED ROLAND W. ANDERSON
AND HORIZONTALLY COUNTY SURVEYOR
TAPED MEASUREMENTS 'ANOKA COUNTY, MINNESOTA'

N 1/4 Cor. Sec. 10, T33, R24

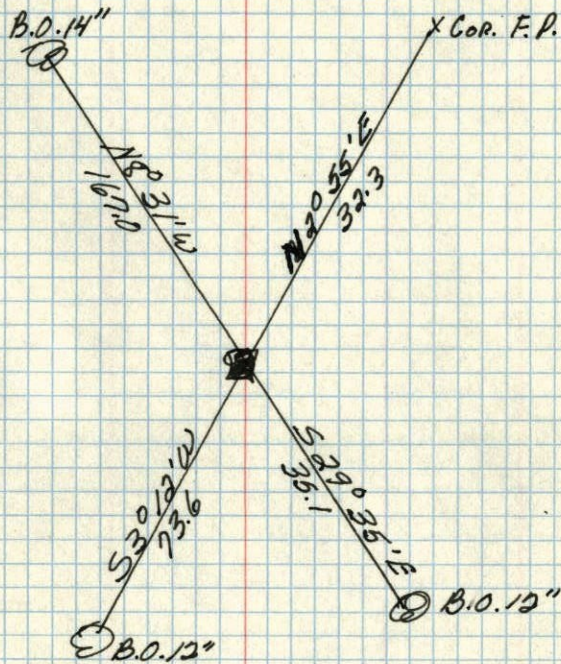
Found 4" Sq. Concrete Monument (down 0.1').
1/4" iron pipe on north face.TEMPERATURE CORRECTED
AND HORIZONTALLY
TAPED MEASUREMENTSFound cast iron set in place
of Conc.8-26-77 H. Larson
B. Guetzko
J. BoettcherROLAND W. ANDERSON
COUNTY SURVEYOR
ANOKA COUNTY, MINNESOTA

N 1/4 Cor. Sec. 10, T33, R24

Found 4" Sq. Concrete Monument (down 0.1').
1/4" iron pipe on north face.TEMPERATURE CORRECTED
AND HORIZONTALLY
TAPED MEASUREMENTSROLAND W. ANDERSON
COUNTY SURVEYOR
ANOKA COUNTY, MINNESOTA

N¹/₄ Cor. of Sec. 10 T33 R24
Conc. Mon.

10 ✓



Retied
26 Nov. 63
J.O.

Dec. 20, 1944
Cartwright