

# CERTIFICATE OF LOCATION OF GOVERNMENT CORNER

County of Anoka

State of Minnesota

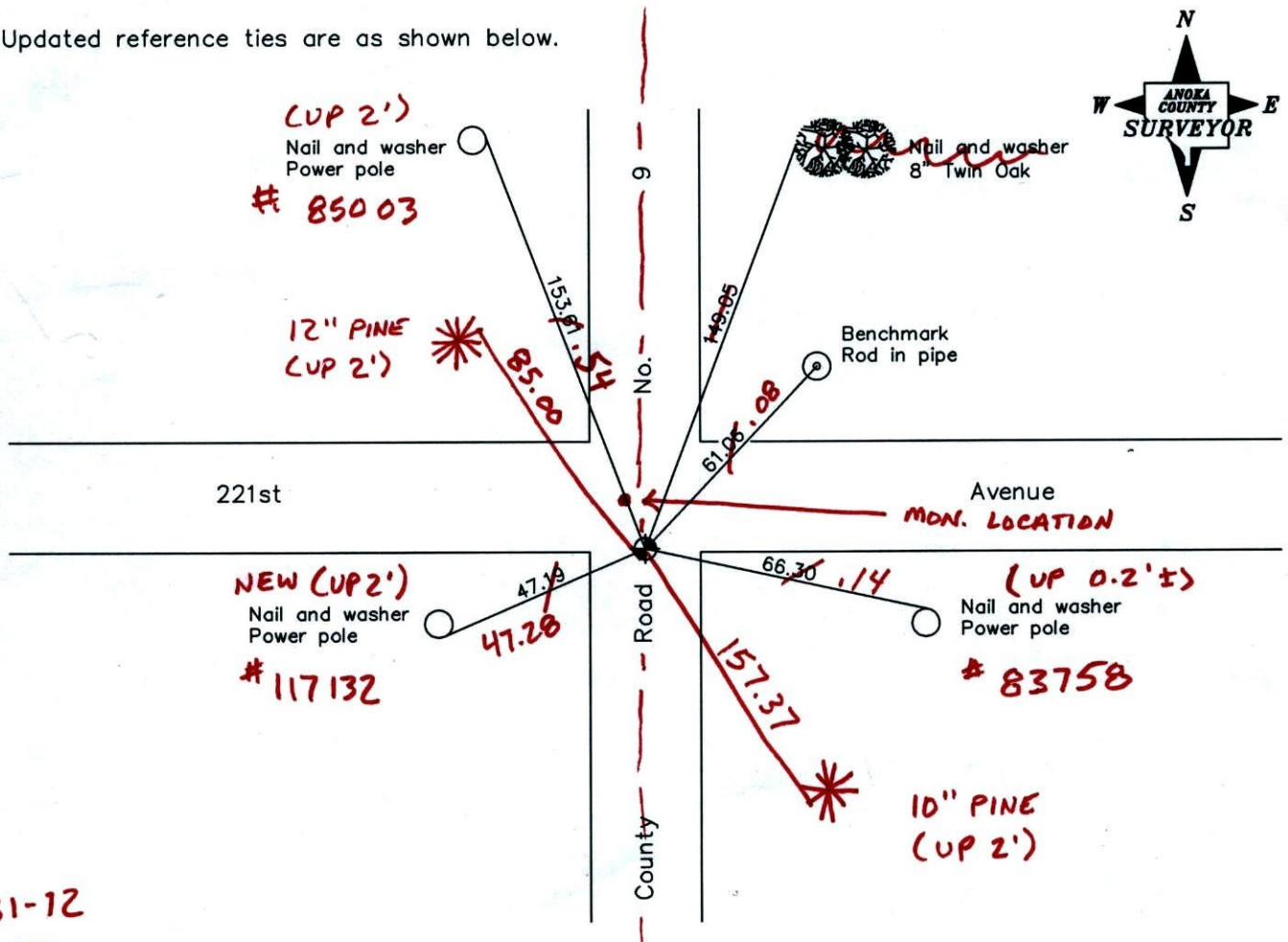
Northwest Corner of Sec. 9 Township 33 Range 24

On the 8th day of May, 1963, the described corner was evidenced by a granite monument

and to perpetuate the location of said corner, at the exact location thereof, a permanent marker was placed consisting of a cast iron monument (8' ± W. OF E)

AND on the \_\_\_ day of \_\_\_\_\_, \_\_\_\_\_, said permanent marker was \_\_\_\_\_

Updated reference ties are as shown below.



1-31-12  
BK-SS  
T/T-VRS

Revised date
6/29/92
6/04/97
4/24/01

N.A.D. 1983 Coordinates (1996 Adjustment)	
County Project Coordinates	
Northing	<u>222258.3616</u>
Easting	<u>479185.4642</u>
Date	<u>4/24/01</u>

I hereby certify that this United States public land survey monument record is correct and complete to the best of my knowledge and belief.

\_\_\_\_\_, Date \_\_\_\_\_  
\_\_\_\_\_, Anoka County Surveyor

Minnesota License Number \_\_\_\_\_

VRS 30 = 0.10      N = 222258.3038      E = 479185.4418

# CERTIFICATE OF LOCATION OF GOVERNMENT CORNER

County of Anoka

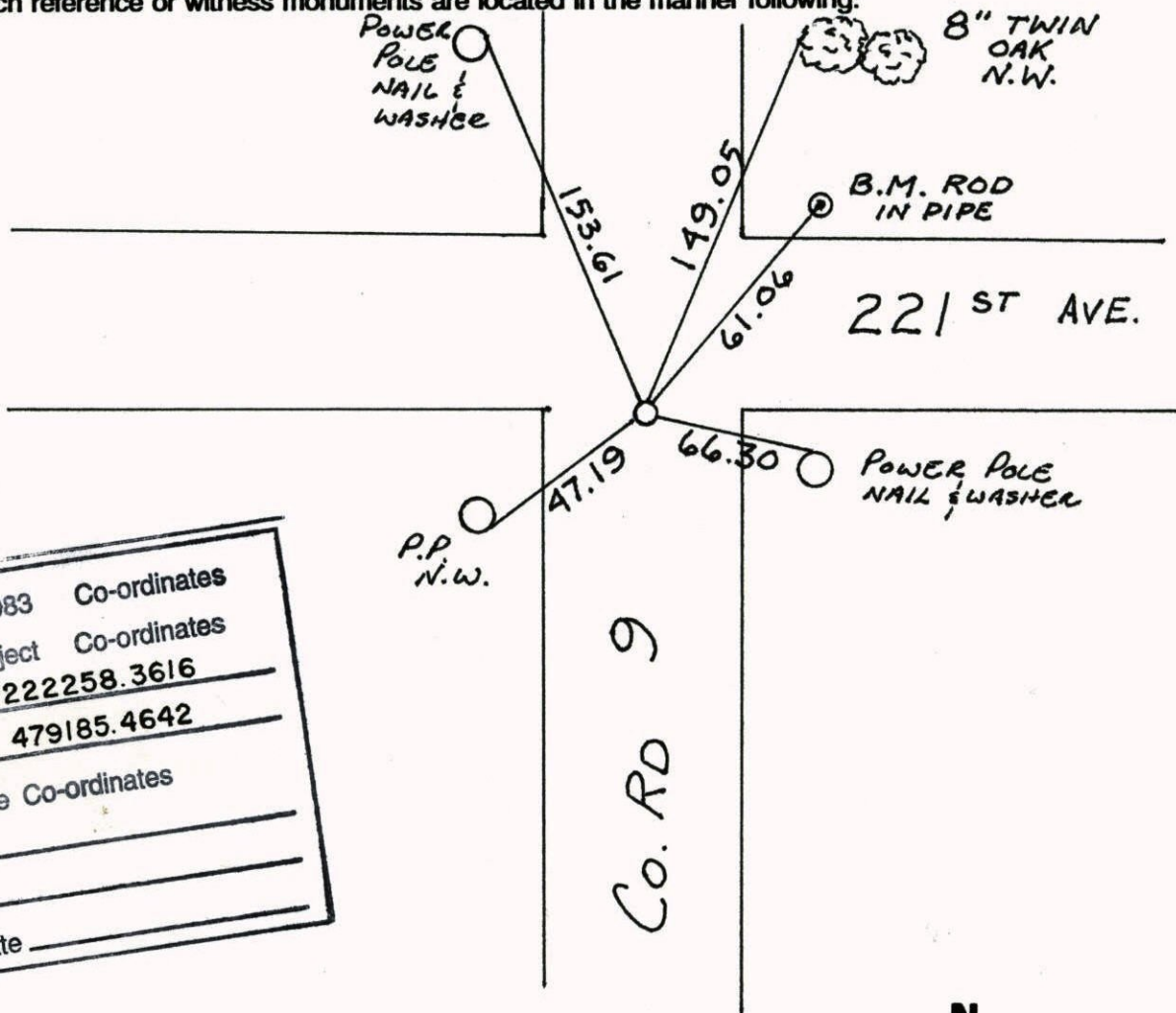
State of Minnesota

NORTHWEST Corner of Sec. 9 Township 33 Range 24

I hereby certify that on the 8<sup>TH</sup> day of MAY, 19 63, I found the described corner which was evidenced by GRANITE MON.

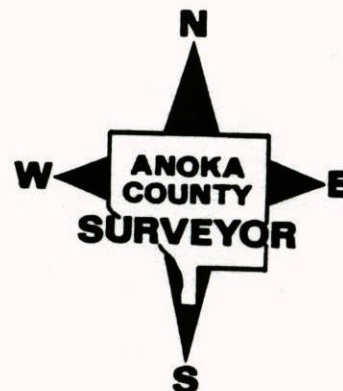
and I further certify that to perpetuate the location of said corner, I did, at the exact location thereof, place a permanent marker consisting of C.I.M.

which reference or witness monuments are located in the manner following:



N.A.D.	1983	Co-ordinates
County	Project	Co-ordinates
Northing	222258.3616	
Easting	479185.4642	
State Plane Co-ordinates		
Y	_____	
X	_____	
Date	_____	

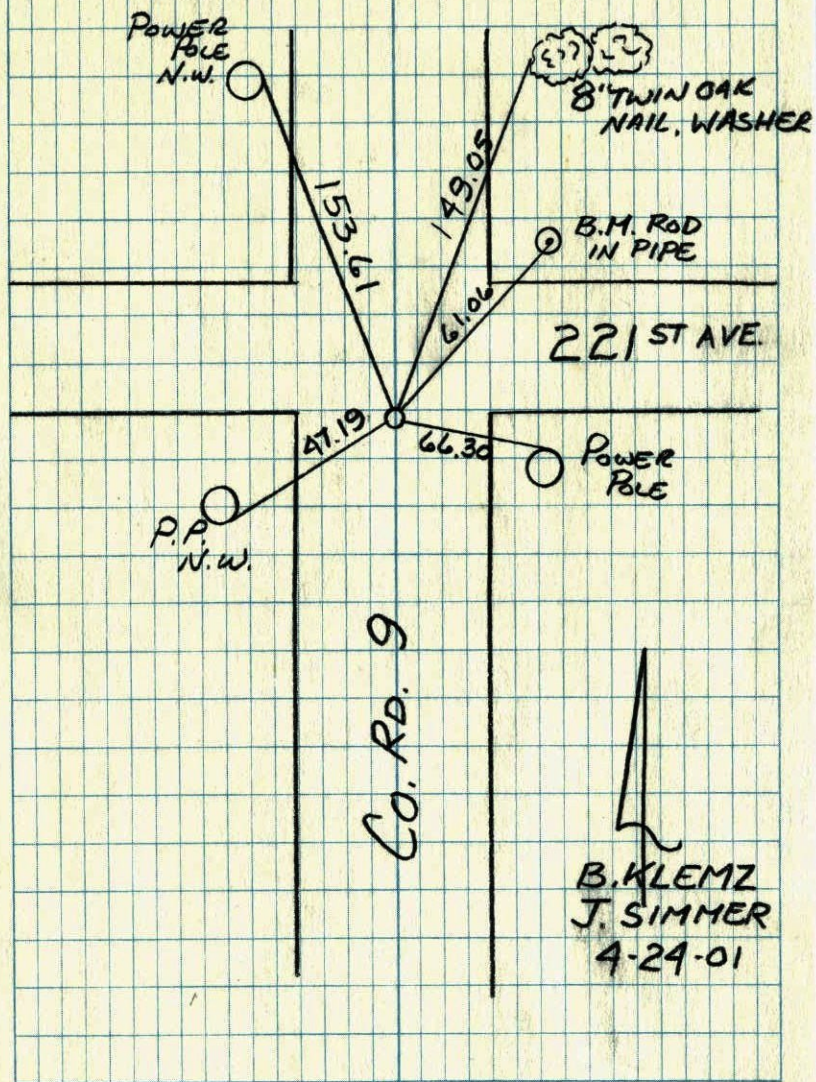
Revised date	Revised date	Revised date
6-29-92		
6-4-97		
4-24-01		





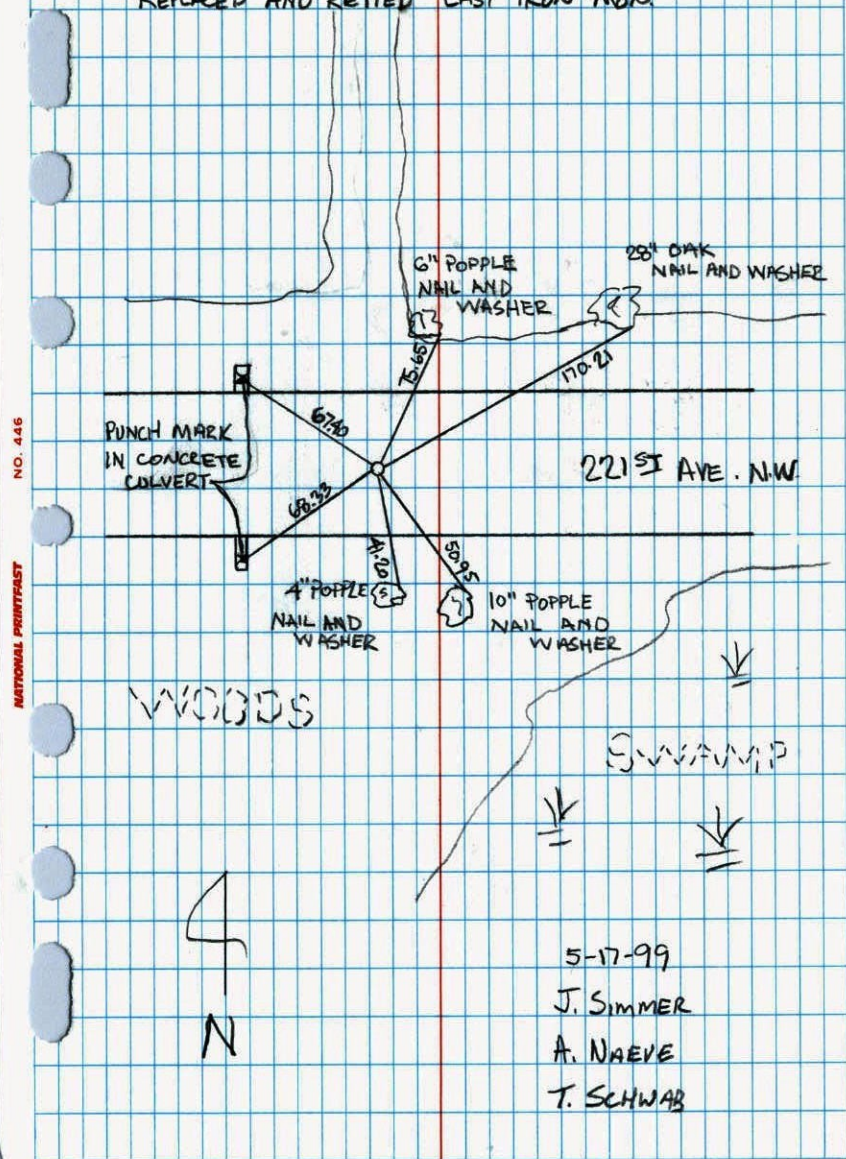
N.W. COR. SEC. 9 T33 R24

## GPS AND RETIED C.I.M.



NORTHWEST COR. SEC. 10, T. 33, R. 24

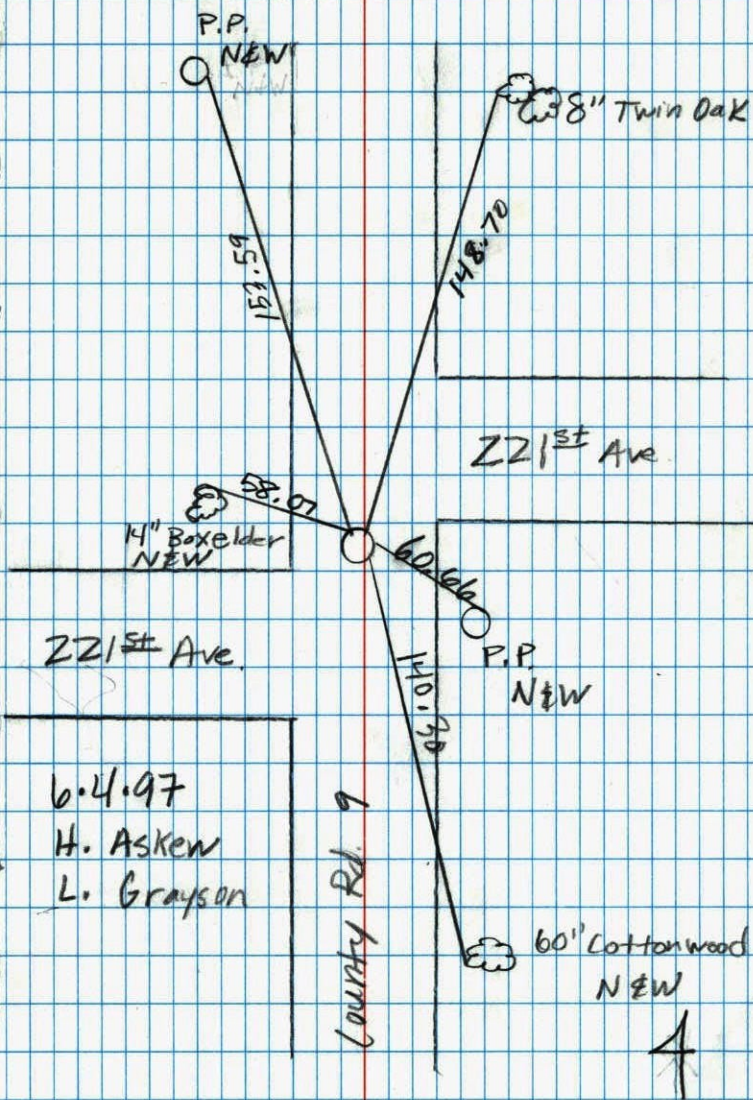
## REPLACED AND RETIED CAST IRON MON.





Northwest Corner Sec. 9 T33 R24 pg 29

Retired Cast Iron



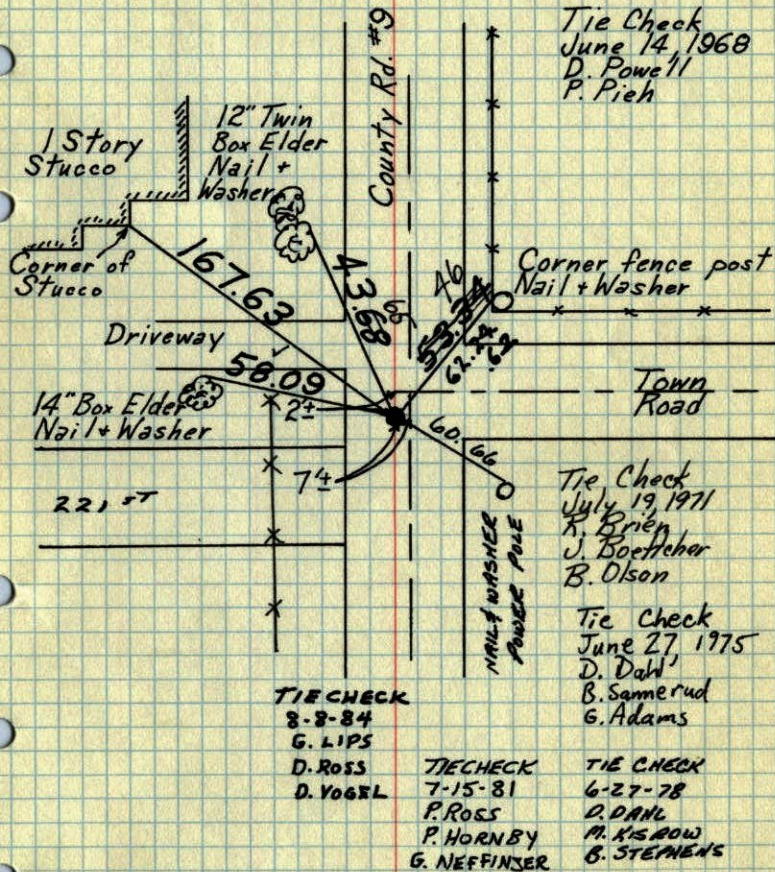
6.4.97  
H. Askew  
L. Grayson



NATIONAL INSTRUMENTS NO. 446

NW Cor. Sec. 9-T33-R24

Cast Iron Monument set May 8, 1963  
J. Oliver  
Monument 4.98' East of M. Anderson  
removed granite.



Tie Check  
June 14, 1968  
D. Powell  
P. Pieh

Tie Check  
July 19, 1971  
K. Brien  
J. Boettcher  
B. Olson

Tie Check  
June 27, 1975  
D. Dahl  
B. Samerud  
G. Adams

TIE CHECK  
8-8-84  
G. LIPS  
D. ROSS  
D. VOGL

TIE CHECK  
7-15-81  
P. ROSS  
P. HORNBY  
G. NEFFINER

TIE CHECK  
6-27-78  
D. DAHL  
M. KISROW  
B. STEPHENS

TEMPERATURE CORRECTED  
AND HORIZONTALLY  
TAPED MEASUREMENTS

ROLAND W. ANDERSON  
COUNTY SURVEYOR  
ANOKA COUNTY, MINNESOTA





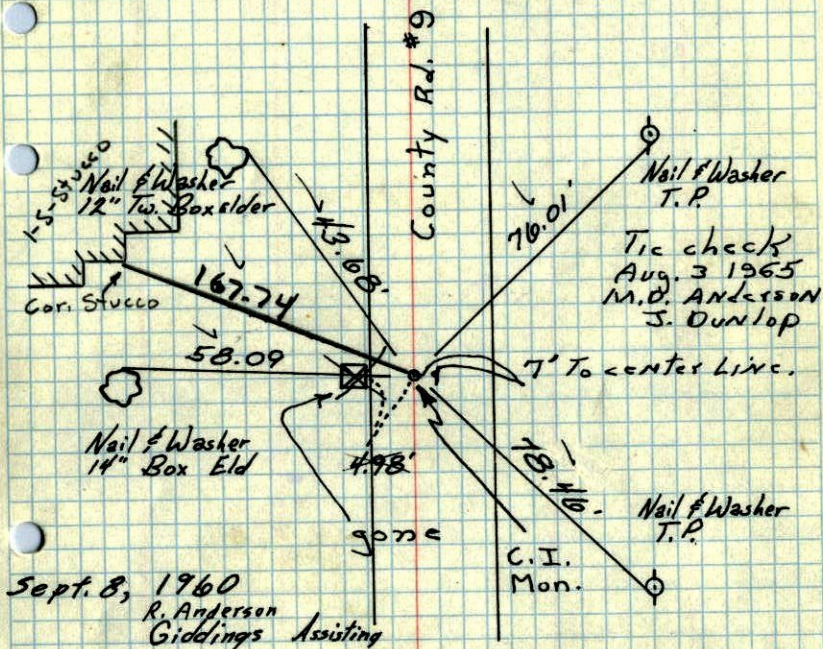


NW Cor. Sec 9 - T33 - R24

Iron Pipe

flush with part.

Replaced I.P. with Cast Iron Monument  
and removed Granite 8 May 63 - Oliver - Anderson

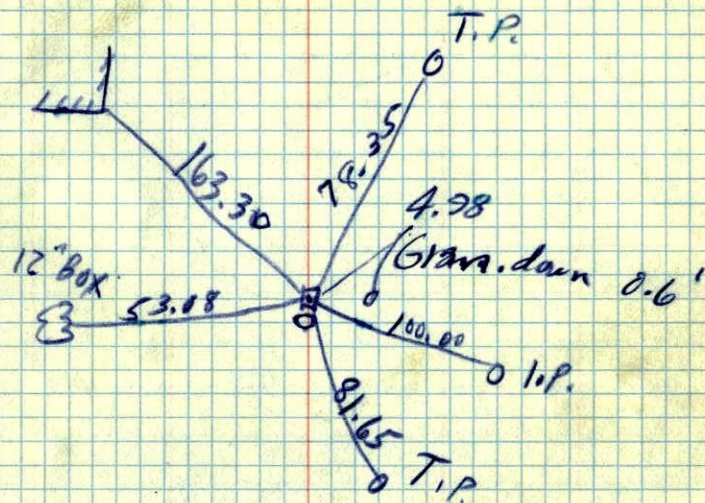


TEMPERATURE CORRECTED  
AND HORIZONTALLY  
TAPED MEASUREMENTS

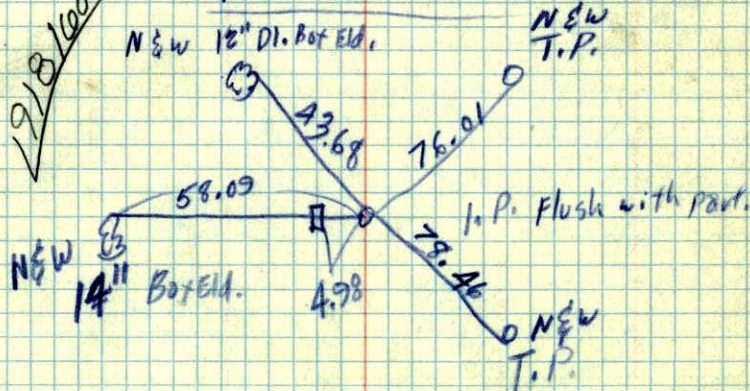
ROLAND W. ANDERSON  
COUNTY SURVEYOR  
ANOKA COUNTY, MINNESOTA

NW Corn. Sec. 9, T33, R24

Ties to old Granite

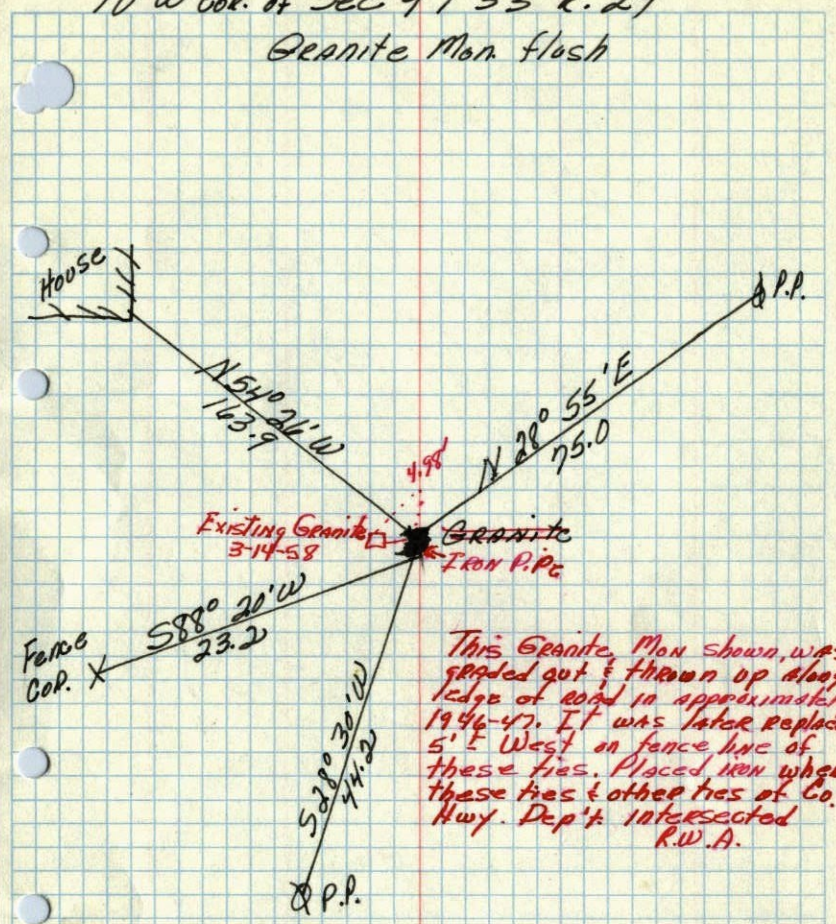


Ties to I.P.





N W cor. of Sec 9 T 33 R. 24  
Granite Man. flash



This Granite Man shown, was  
graded out & thrown up along  
edge of road in approximately  
1946-47. It was later replaced  
5' E West on fence line of  
these ties. Placed here where  
these ties & other ties of Co.  
Hwy. Dep't. intersected  
R.W.A.

Dec. 20, 1944  
Cartwright