

# CERTIFICATE OF LOCATION OF GOVERNMENT CORNER

County of Anoka

State of Minnesota

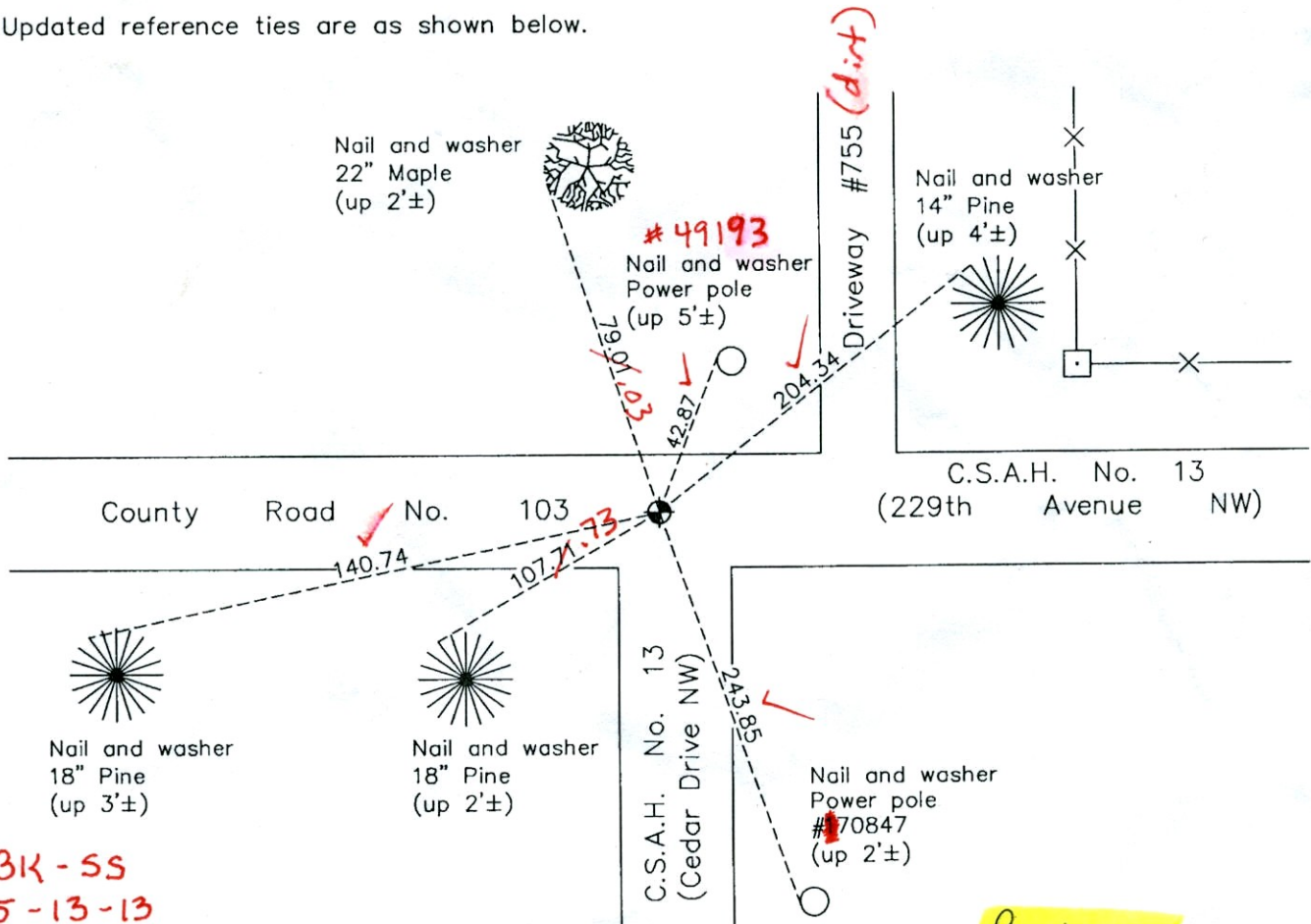
## Northeast Corner of Sec. 2 Township 33 Range 24

On the 22nd day of November, 1963, the described corner was evidenced by area resurvey

and to perpetuate the location of said corner, at the exact location thereof, a permanent marker was placed consisting of a cast iron monument

AND on the 30th day of August, 2011, said permanent marker was found missing.  
Set new cast iron monument and updated ties on March 26, 2012.

Updated reference ties are as shown below.



BK-SS  
 5-13-13  
 VRS-T/T



Revision Date

4/05/12

N.A.D. 1983 Coordinates  
 (1996 Adjustment)

County Project Coordinates	
Northing	227426.9598
Easting	495071.2506
Date	2/21/01

I hereby certify that this United States public land survey monument record is correct and complete to the best of my knowledge and belief.

*Larry D. Hoium* Date 4/05/12  
 Larry D. Hoium, Anoka County Surveyor  
 Minnesota License Number 18165

VRS 3DQ=0.09

N=227426.9154

E=495071.2917

# CERTIFICATE OF LOCATION OF GOVERNMENT CORNER

County of Anoka                      State of Minnesota

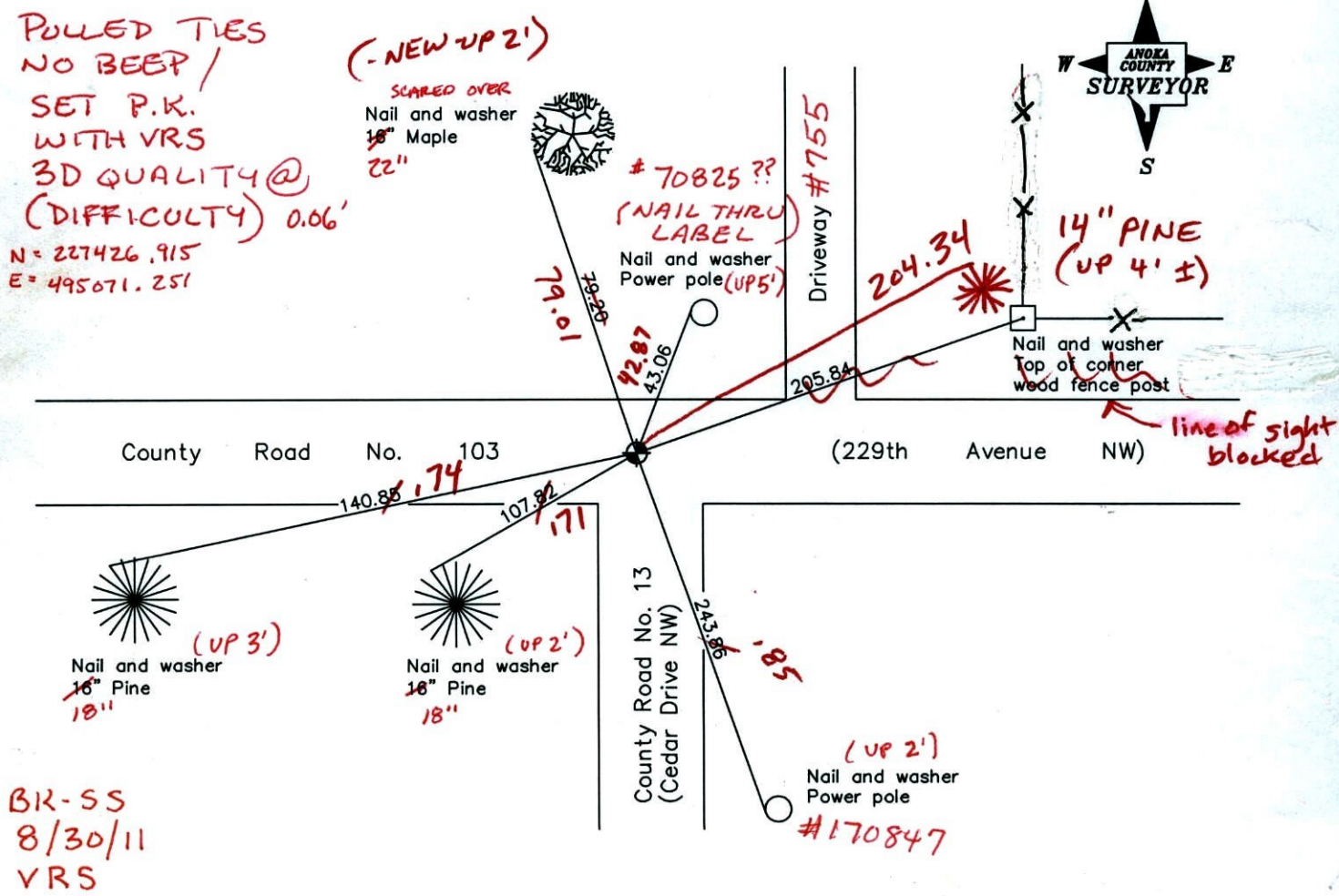
Northeast Corner of Sec. 2 Township 33 Range 24

I hereby certify that on the 22nd day of November, 1963, I found the described corner which was evidenced by \_\_\_\_\_

and I further certify that to perpetuate the location of said corner, I did, at the exact location thereof, place a permanent marker consisting of a cast iron monument **GONE (8-30-11)**

**MON. RESET & RETIED BK-SS 3-26-12**

which reference or witness monuments are located in the manner following:



Revised date

7/17/92
5/30/97
2/21/01

N.A.D. 1983 Coordinates  
(1996 adjustment)

County Project Coordinates
Northing <u>227426.9598</u>
Easting <u>495071.2506</u>

N - 0.01  
E - 0.01

Date 2/21/01

# CERTIFICATE OF LOCATION OF GOVERNMENT CORNER

County of Anoka

State of Minnesota

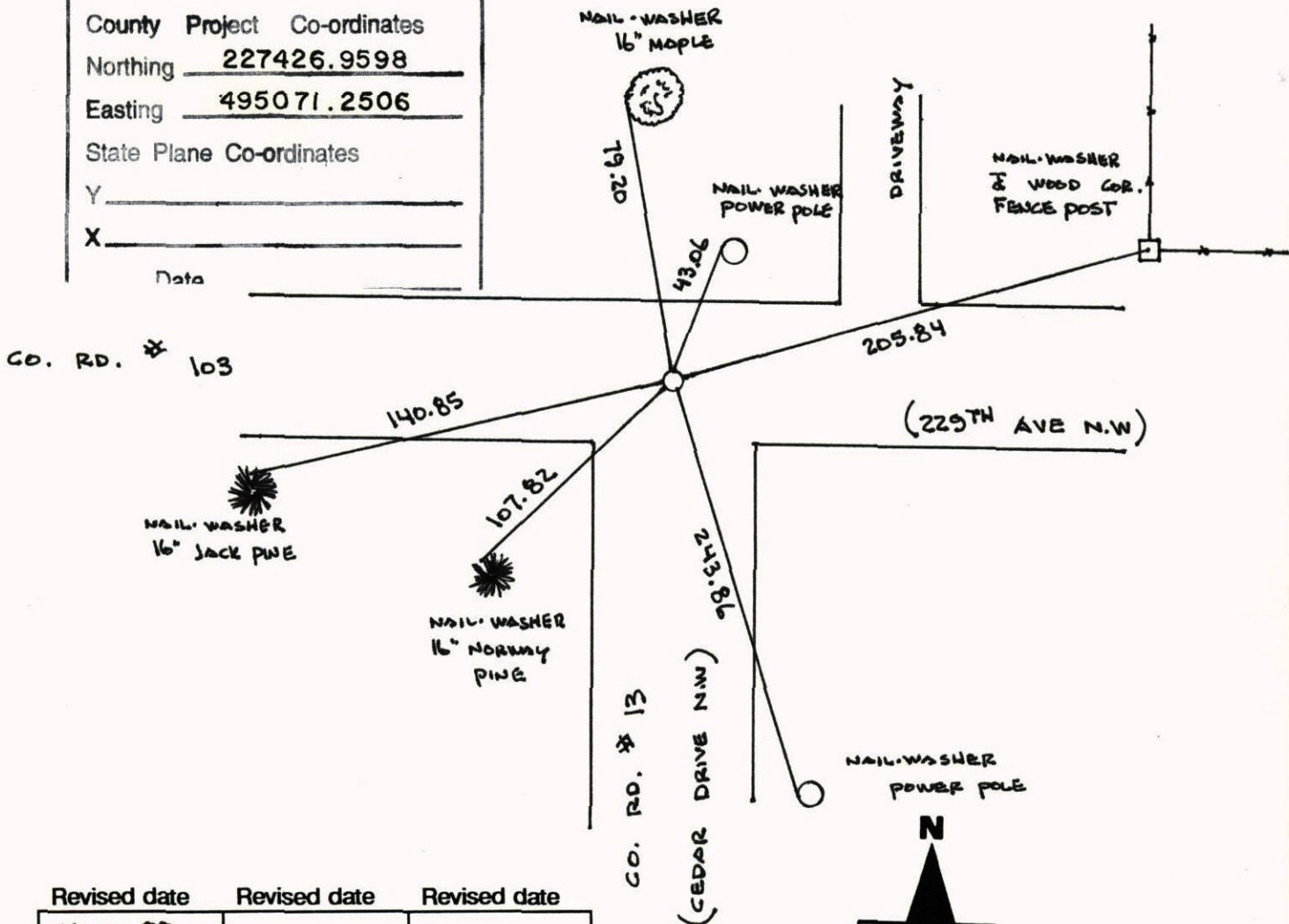
NORTHEAST Corner of Sec. 2 Township 33 Range 24

I hereby certify that on the 22<sup>ND</sup> day of NOVEMBER, 1963, I found the described corner which was evidenced by \_\_\_\_\_

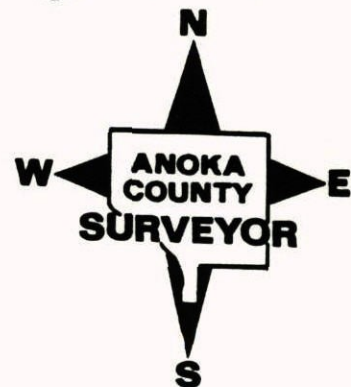
and I further certify that to perpetuate the location of said corner, I did, at the exact location thereof, place a permanent marker consisting of CAST IRON MONUMENT

which reference or witness monuments are located in the manner following:

N.A.D.	1983	Co-ordinates
County	Project	Co-ordinates
Northing	<u>227426.9598</u>	
Easting	<u>495071.2506</u>	
State Plane Co-ordinates		
Y	_____	
X	_____	
Date _____		

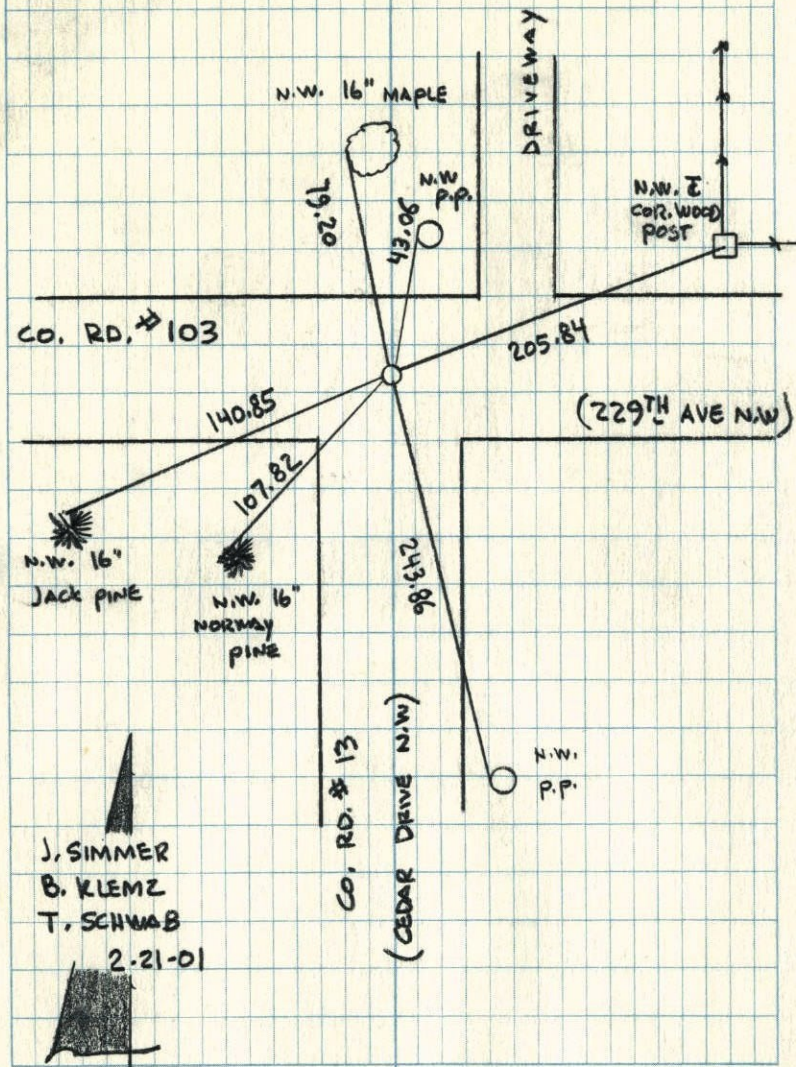


Revised date	Revised date	Revised date
7-31-87		
7-17-92		
5-30-97		
2-21-01		



NORTHEAST COR. SEC. 2 T 33 R 24

GPS & RETIED CAST IRON MON.



J. SIMMER  
B. KLEMEZ  
T. SCHWAB  
2-21-01

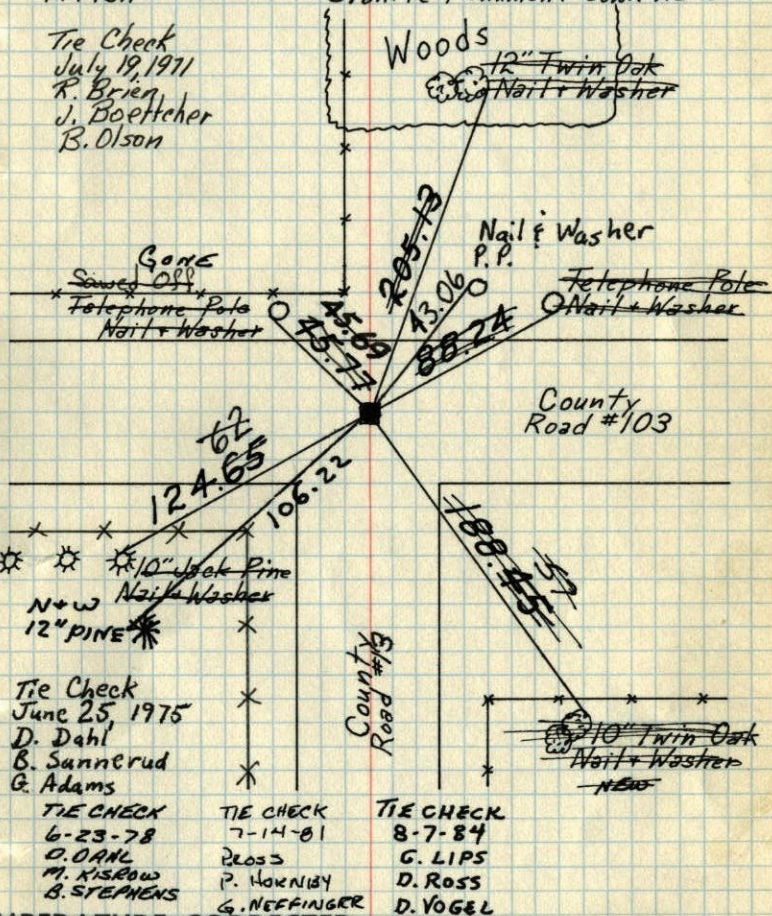
NE Cor. Sec. 2 - T33 - R24

Set Cast Iron Monument in place over granite monument. Cast Iron flush with roadway.

June 12, 1968  
D. Powell  
P. Pieh

PK's 2.00' North + East  
Granite Monument down 1.5'±

Tie Check  
July 19, 1971  
K. Brien  
J. Boettcher  
B. Olson



Tie Check  
June 25, 1975  
D. Dahl  
B. Sannerud  
G. Adams

TIE CHECK  
6-23-78  
O. OAKL  
M. KISLOW  
B. STEPHENS

TIE CHECK  
7-14-81  
ROSS  
P. HORNBY  
G. NEFFINGER

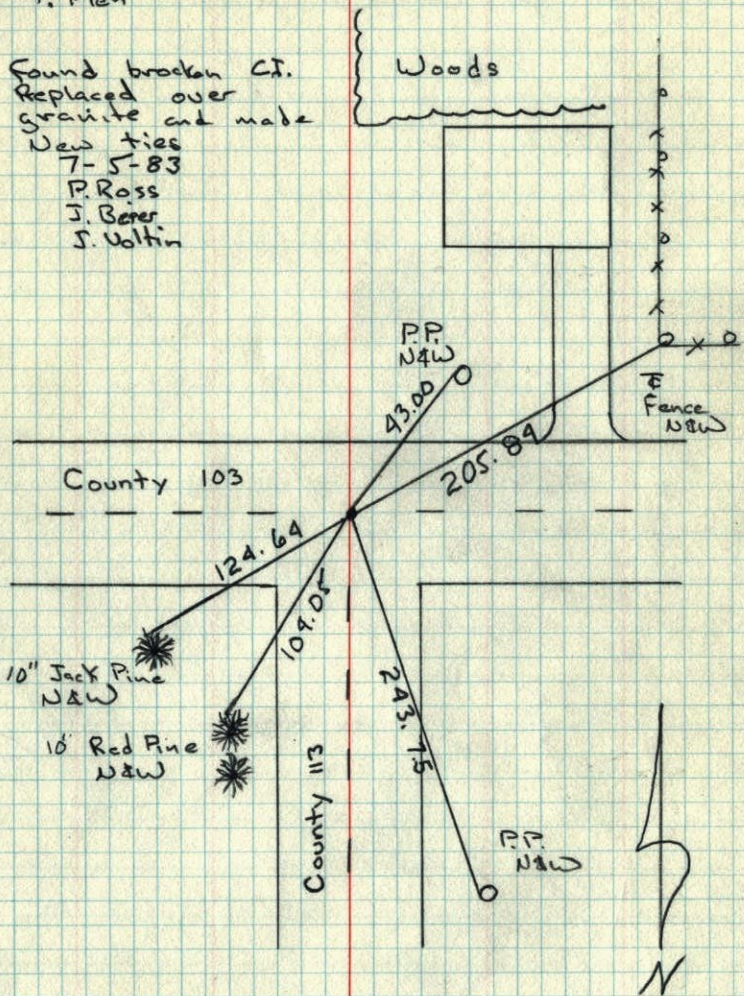
TIE CHECK  
8-7-84  
C. LIPS  
D. ROSS  
D. VOGEL

TEMPERATURE CORRECTED  
AND HORIZONTALLY  
TAPED MEASUREMENTS

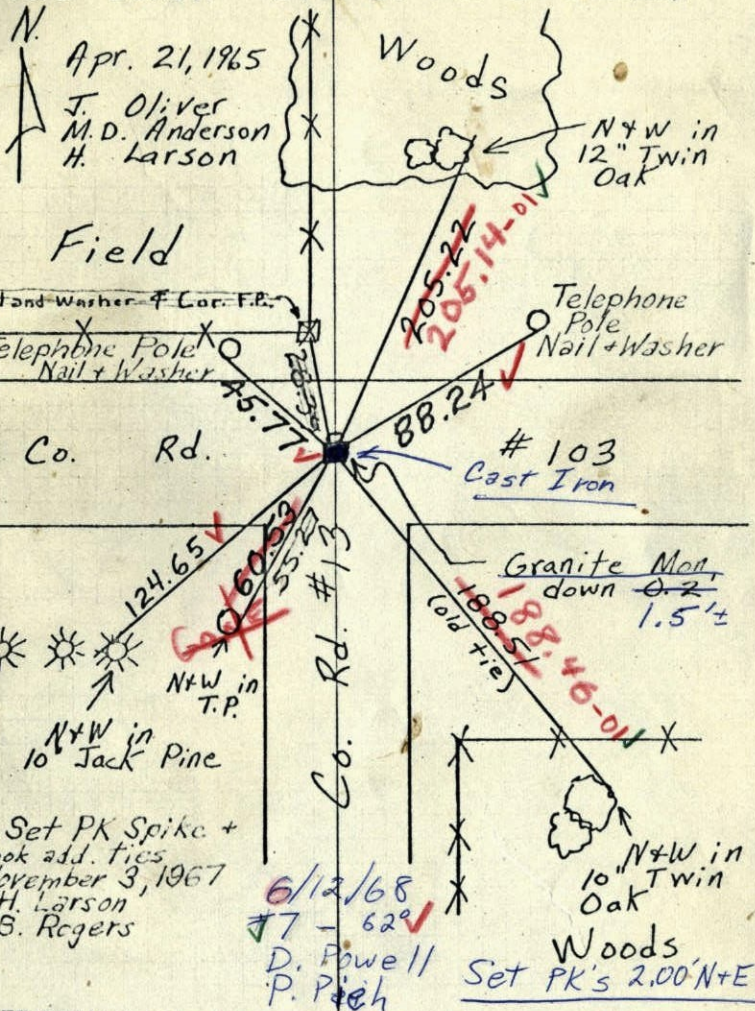
ROLAND W. ANDERSON  
COUNTY SURVEYOR  
'ANOKA COUNTY, MINNESOTA

NE Cor. Sec. 2 T-33 R-24  
 Set C.I. in place over granite Monument  
 June 12 1968  
 D. Powell  
 P. Pieh

Found broken C.I.  
 Replaced over  
 granite and made  
 New ties  
 7-5-83  
 P. Ross  
 J. Bener  
 J. Volthin



N.E. Cor. Sec. 2, T 33, R24  
 Retie Granite Monument because of  
 road const. I.P. on No. side Gran.



Apr. 21, 1965  
 J. Oliver  
 M.D. Anderson  
 H. Larson

Set PK Spike +  
 took add. ties  
 November 3, 1967  
 H. Larson  
 B. Rogers

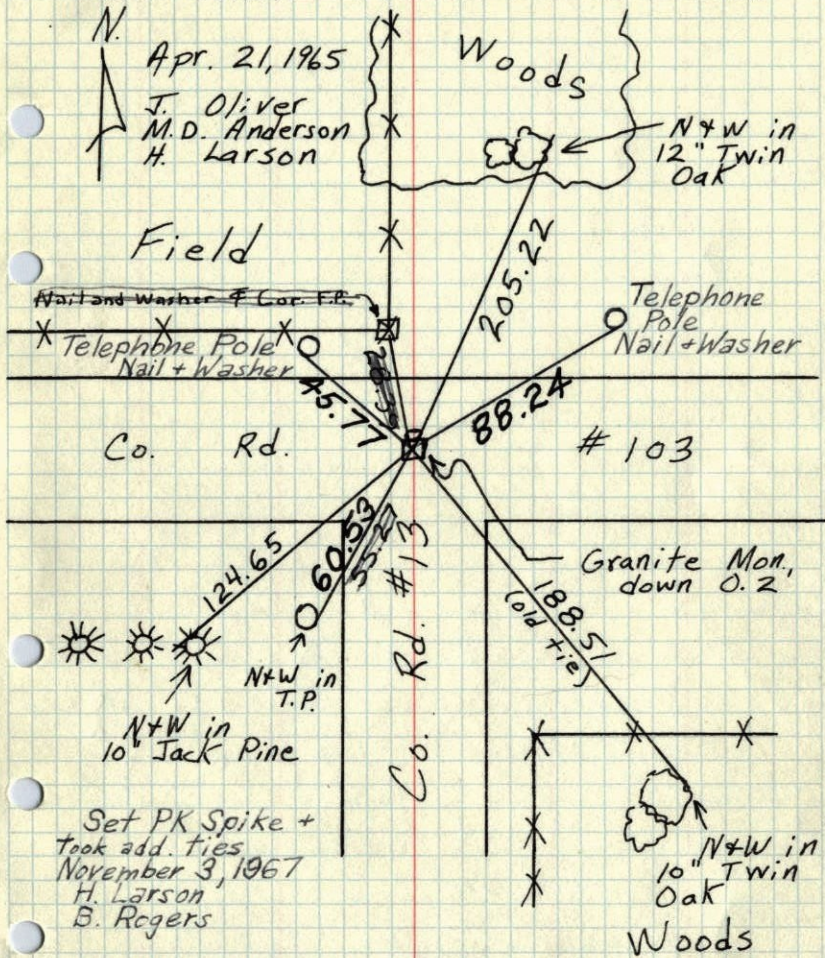
6/12/68  
 #7 - 62°  
 D. Powell  
 P. Pieh

TEMPERATURE CORRECTED  
 AND HORIZONTALLY  
 TAPED MEASUREMENTS  
 ROLAND W. ANDERSON  
 COUNTY SURVEYOR  
 ANOKA COUNTY, MINNESOTA

Should Set C.I. <sup>Flush</sup> on top  
 of Granite

N. E. Cor. Sec. 2, T 33, R24

Retie Granite Monument because of road const. I. P. on No. side Gran.

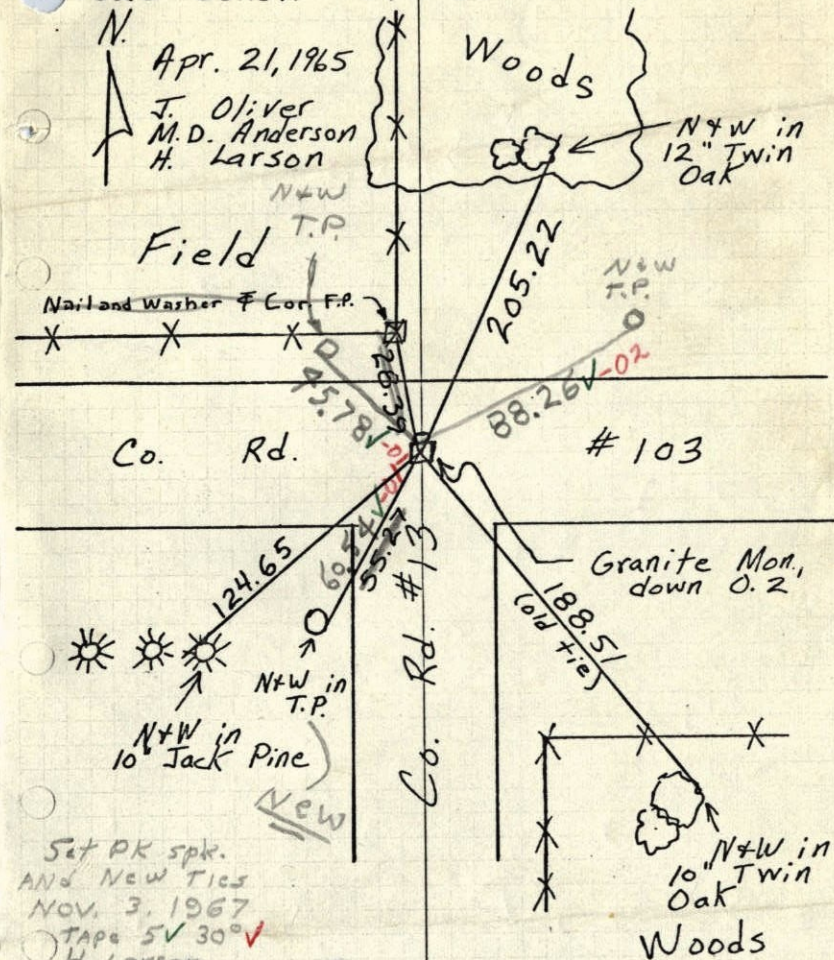


TEMPERATURE CORRECTED  
AND HORIZONTALLY  
TAPED MEASUREMENTS

ROLAND W. ANDERSON  
COUNTY SURVEYOR  
ANOKA COUNTY, MINNESOTA

N. E. Cor. Sec. 2, T 33, R24

Retie Granite Monument because of road const. I. P. on No. side Gran.



TEMPERATURE CORRECTED  
AND HORIZONTALLY  
TAPED MEASUREMENTS

ROLAND W. ANDERSON  
COUNTY SURVEYOR  
ANOKA COUNTY, MINNESOTA

NE Cor. Sec. 2, T33, R24

Retie Gran. Mon. because of road

Const. I.P. on N. Side Gran.

N Apr. 21, 1965

57° #5

J. Oliver

M.D. Anderson

H. Larson

Field

Co. Rd.

#103

Gran. Mon  
down 0.2'

N&W in  
10" Jack  
Pine

N&W in  
T.P.

Co. Rd.  
#13

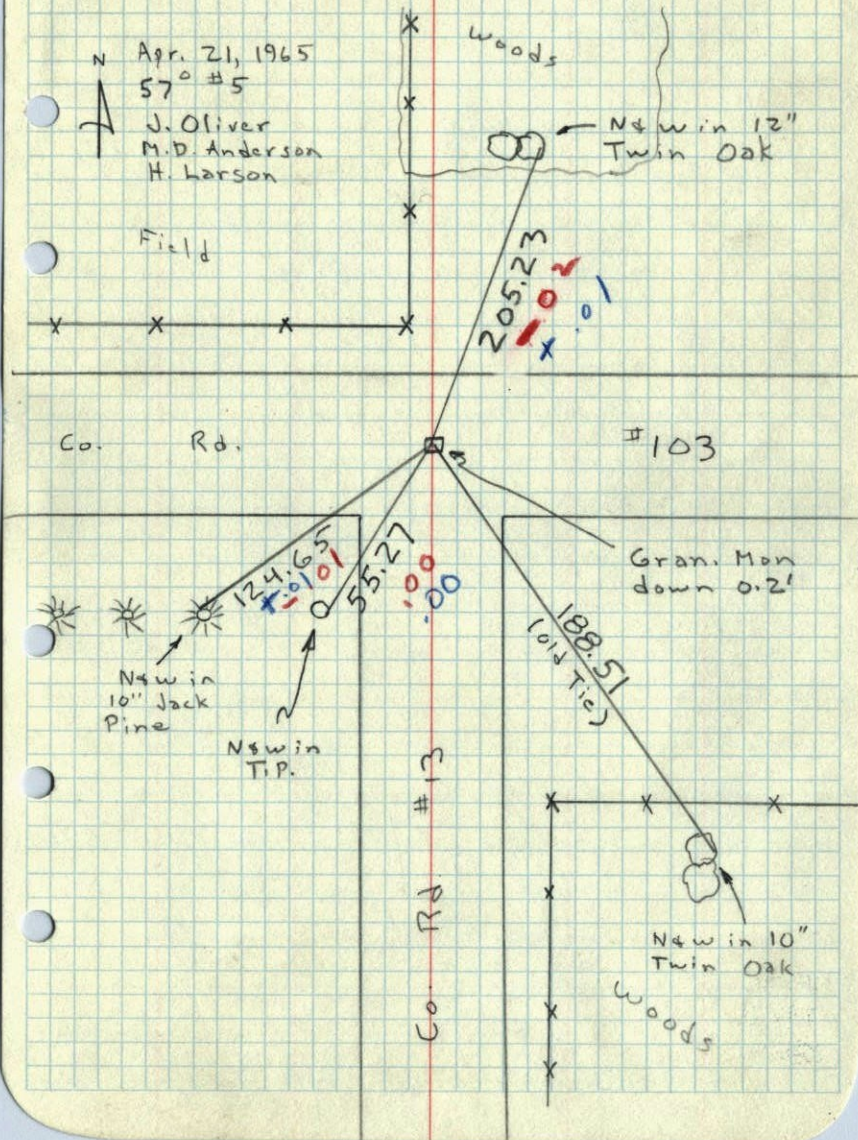
N&W in 10"  
Twin Oak

Woods

N&W in 12"  
Twin Oak

205.23  
101.01  
101.01

188.51  
(old tie)



N.E. Cor. Sec. 2-33-24

Found 6"x6" Granite Monument

Granite down 0.3'

Set iron pipe on north face

Nail and Washer in T.P.

Nail and Washer  
in T.P.

TOWN  
ROAD

COUNTY  
ROAD #13

Nail and Washer  
in 6" Jack Pine

Nail and  
Washer  
in T.P.

COUNTY  
ROAD #13

Nail and Washer  
in 10" Twin Oak

Woods

N

22 Nov. 63

J. Oliver

M.D. Anderson

E. Madson

Retie 9/3/64

M.D. Anderson  
J. Dunlop

TEMPERATURE CORRECTED  
AND HORIZONTALLY  
TAPED MEASUREMENTS

ROLAND W. ANDERSON  
COUNTY SURVEYOR  
ANOKA COUNTY, MINNESOTA

