

CERTIFICATE OF LOCATION OF GOVERNMENT CORNER

County of Anoka

State of Minnesota

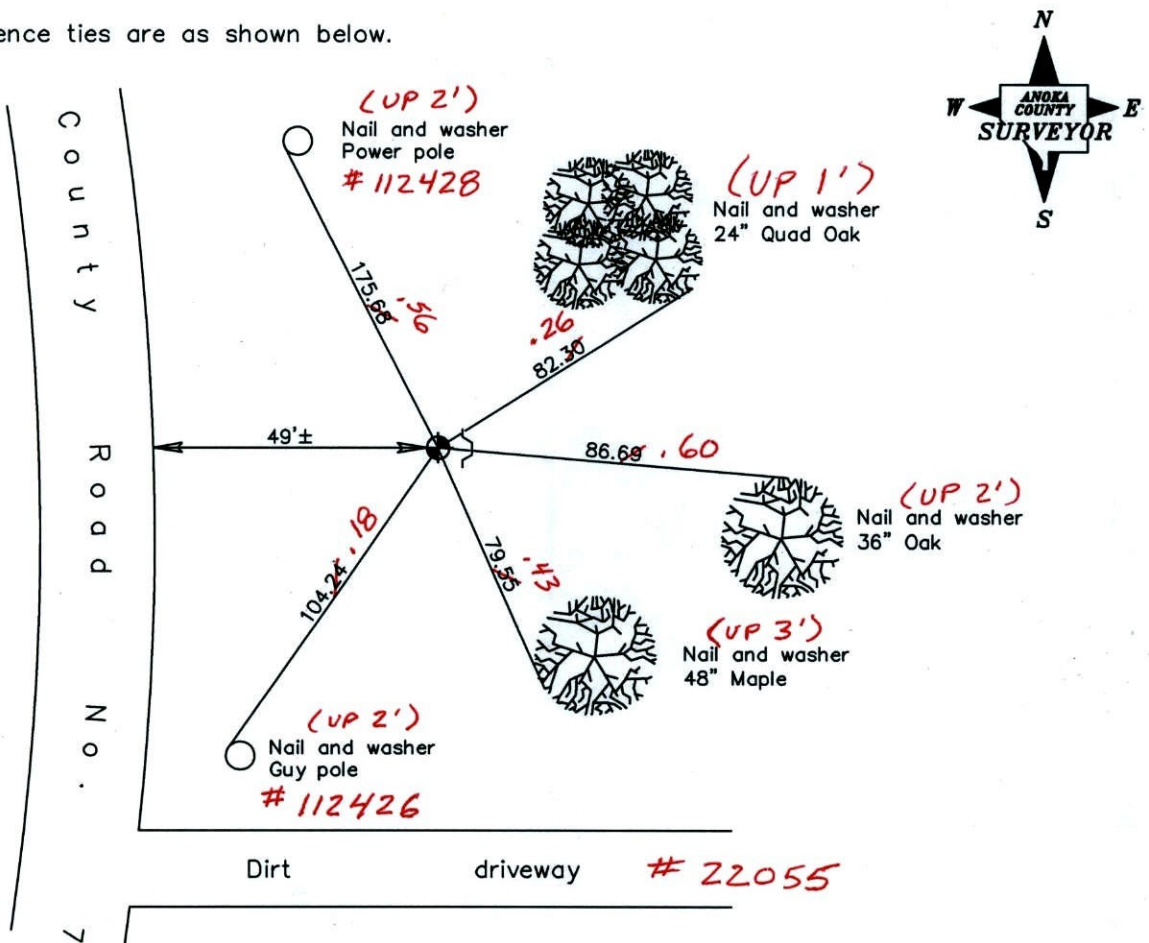
Northwest Corner of Sec. 8 Township 33 Range 24

On the 19th day of July, 1960, the described corner was evidenced by a concrete monument

and to perpetuate the location of said corner, at the exact location thereof, a permanent marker was placed consisting of a cast iron monument on top of broken concrete monument with sign and post on the east side (DOWN 0.3'±)

AND on the ___ day of _____, _____, said permanent marker was _____

Updated reference ties are as shown below.



12/30/11
SS - JB
T/T - VRS

Revised date
7/06/92
10/14/97
3/29/01

N.A.D. 1983 Coordinates (1996 Adjustment)	
County Project Coordinates	
Northing	<u>222327.3577</u>
Easting	<u>473925.5762</u>
Date	<u>3/29/01</u>

I hereby certify that this United States public land survey monument record is correct and complete to the best of my knowledge and belief.

_____ Date _____

_____, Anoka County Surveyor

Minnesota License Number _____

VRS 3D = 0.05 N = 222327.326 E = 473925.521

CERTIFICATE OF LOCATION OF GOVERNMENT CORNER

County of Anoka

State of Minnesota

NORTHWEST Corner of Sec. 8 Township 33 Range 24

I hereby certify that on the 19TH day of July, 19 60, I found the described corner which was evidenced by Concrete Monument

and I further certify that to perpetuate the location of said corner, I did, at the exact location thereof, place a permanent marker consisting of CAST IRON MONUMENT SIGN & POST E. SIDE
ON TOP OF BROKEN CONCRETE MONUMENT

which reference or witness monuments are located in the manner following:

N.A.D. 1983 Co-ordinates

County Project Co-ordinates

Northing 222327.3577

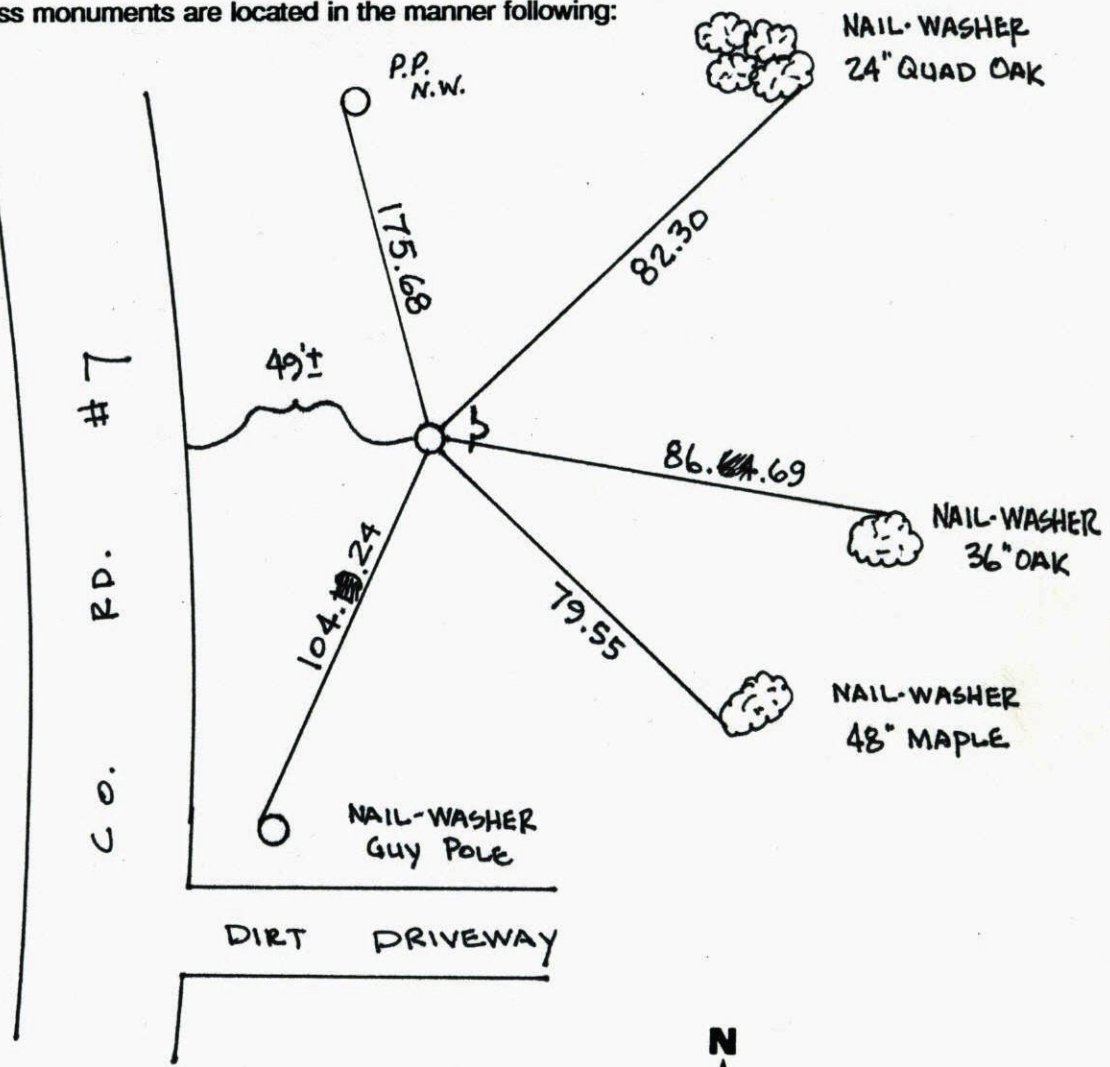
Easting 473925.5762

State Plane Co-ordinates

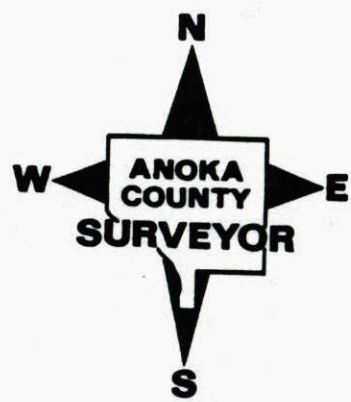
Y _____

X _____

Date _____



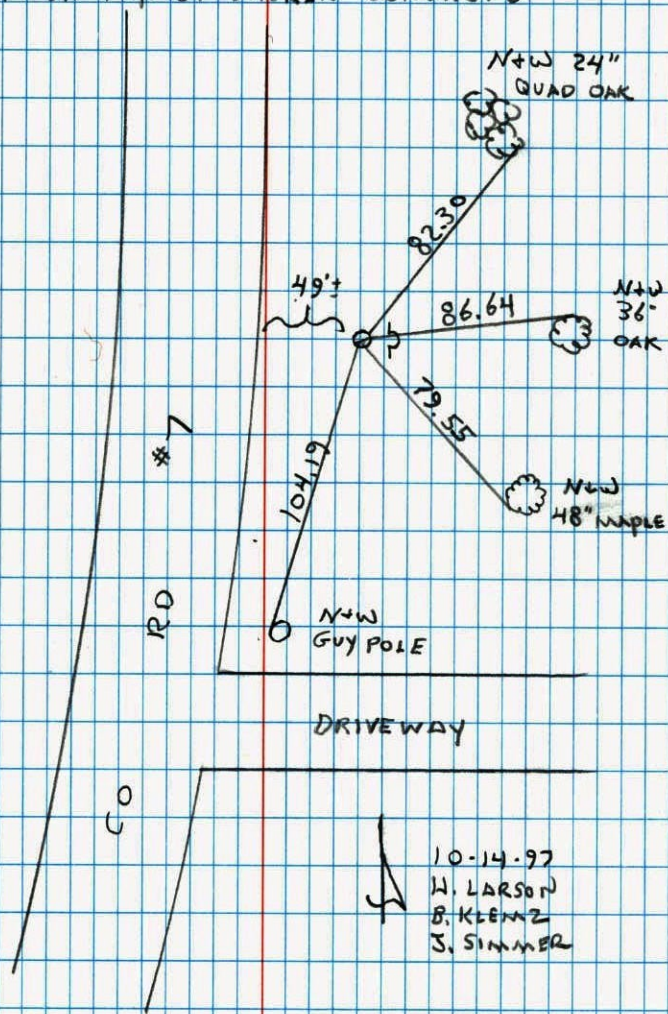
Revised date	Revised date	Revised date
8-10-84		
7-22-89		
7-6-92		
10-14-97		
3-29-01		



NW COR SEC. 8 T33 R24

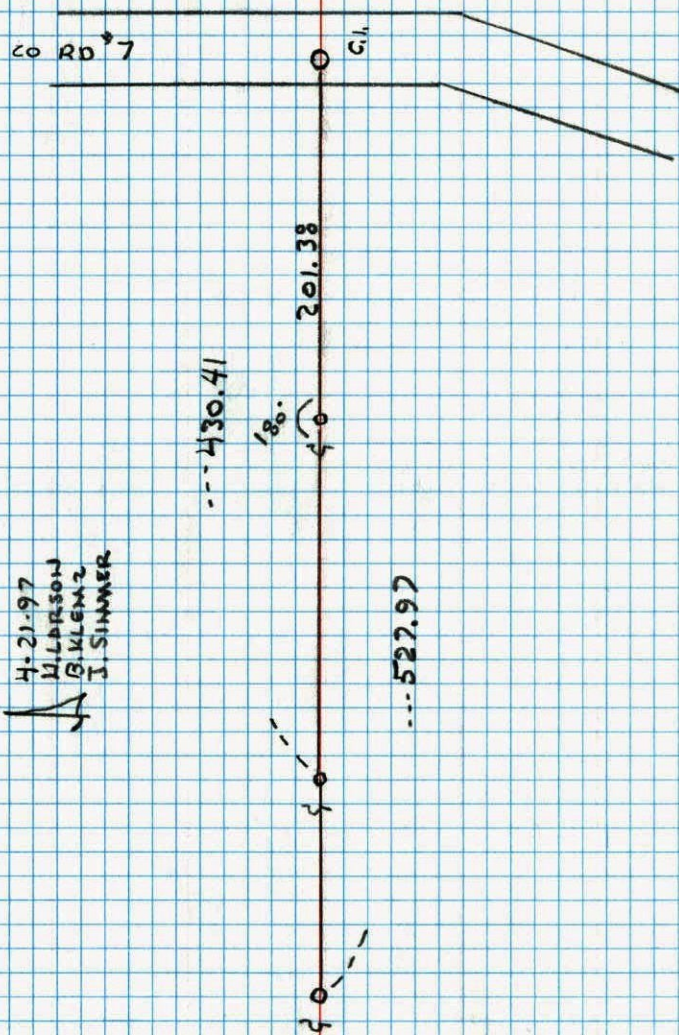
RESET AND RETIED AFTER
CONSTRUCTION

C.I. ON TOP OF BROKEN CONCRETE



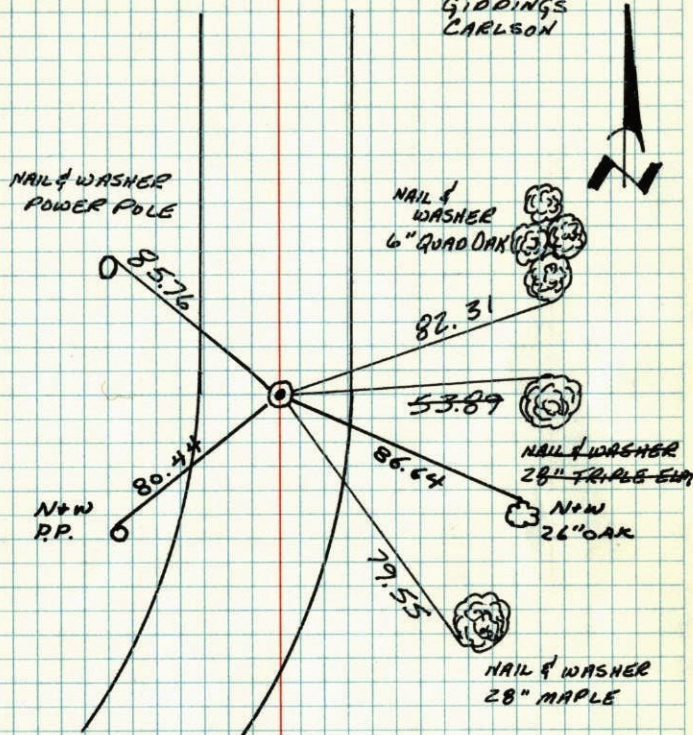
CONSTRUCTION TIES

NW COR. SECTION 8 T33 R24

SET 1/2" IRON PIPES AS TRANSIT TIES
SIGN + POSTS ON WEST SIDES

N.W. CORNER SECTION 8-T33-R24

SET CAST IRON MONUMENT ON TOP OF CONCRETE MONUMENT.

19 JUL 60
GIDDINGS
CARLSON

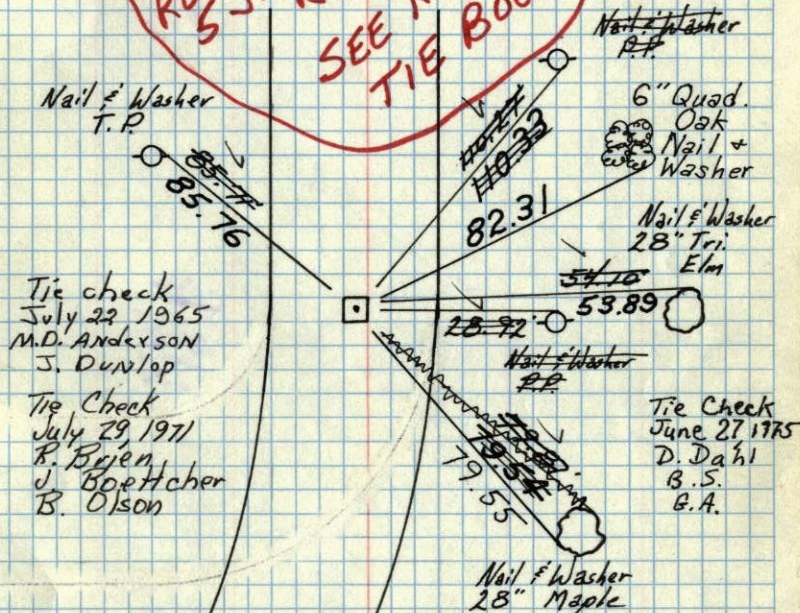
TIE CHECK 27 JUN 75 D. DAHL B. SANNERUD S. ADAMS	TIE CHECK 7-22-81 P. ROSS P. HORNBY G. NEFFINGER
TIE CHECK 6-29-78 D. DAHL B. STEPHENS M. KISSEND	TIE CHECK 8-10-84 G. LIPS D. ROSS D. VOGEL

TEMPERATURE CORRECTED
AND HORIZONTALLY
TAPED MEASUREMENTSROLAND W. ANDERSON
COUNTY SURVEYOR
ANOKA COUNTY, MINNESOTA

NW Cor. Sec 8-T33-R24

Cone. Mon.
down 2'

Placed cast iron monument over top.

REDRAWN
5 JAN 79
RMS
SEE NEW
TIE BOOKTie check
July 22 1965
M.D. ANDERSON
J. DunlopTie Check
July 29 1971
R. Bjorn
J. Boettcher
B. Olson

7/19/60

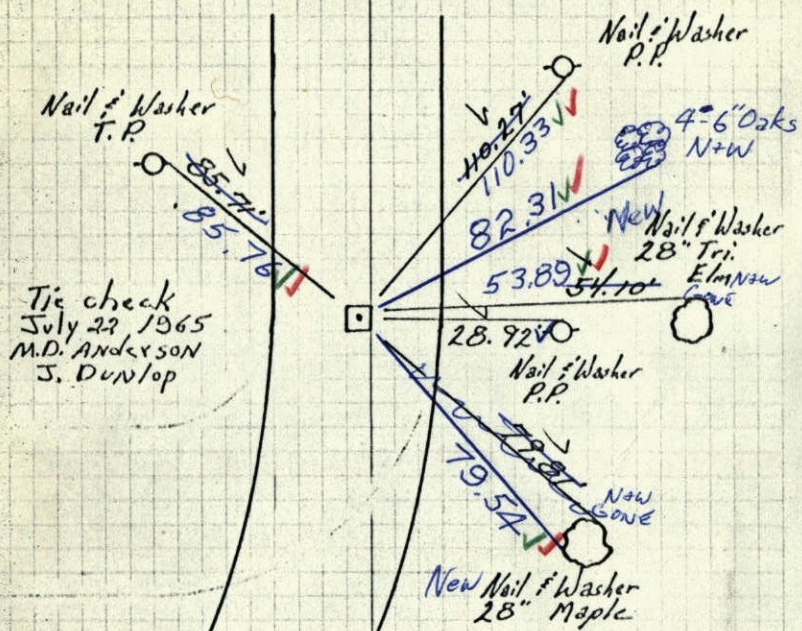
Giddings
CarlsonTie Check
June 21 1968
D. Powell
P. Pieh
R. OlsonTEMPERATURE CORRECTED
AND HORIZONTALLY
TAPED MEASUREMENTSROLAND W. ANDERSON
COUNTY SURVEYOR
ANOKA COUNTY, MINNESOTA

14 17
NW Cor. Sec 8-T33-R24

Conc. Mon.

down 2'

Placed cast iron monument over top.



Tie check
July 22, 1965
M.D. Anderson
J. Dunlop

7/19/60
Giddings
Carlson

6/21/68
#7-620
D. Powell
P. Pich
R. Olson

TEMPERATURE CORRECTED
AND HORIZONTALLY
TAPED MEASUREMENTS

ROLAND W. ANDERSON
COUNTY SURVEYOR
ANOKA COUNTY, MINNESOTA

14 17
NW Cor. Sec 8-T33-R24

~~Conc. Mon.~~

~~down 2'~~

found Conc. Mon. down 2.0'±
Placed Cast Iron Mon. over top

All ties O.K.



Tie check
July 22, 1965
M.D. Anderson
J. Dunlop

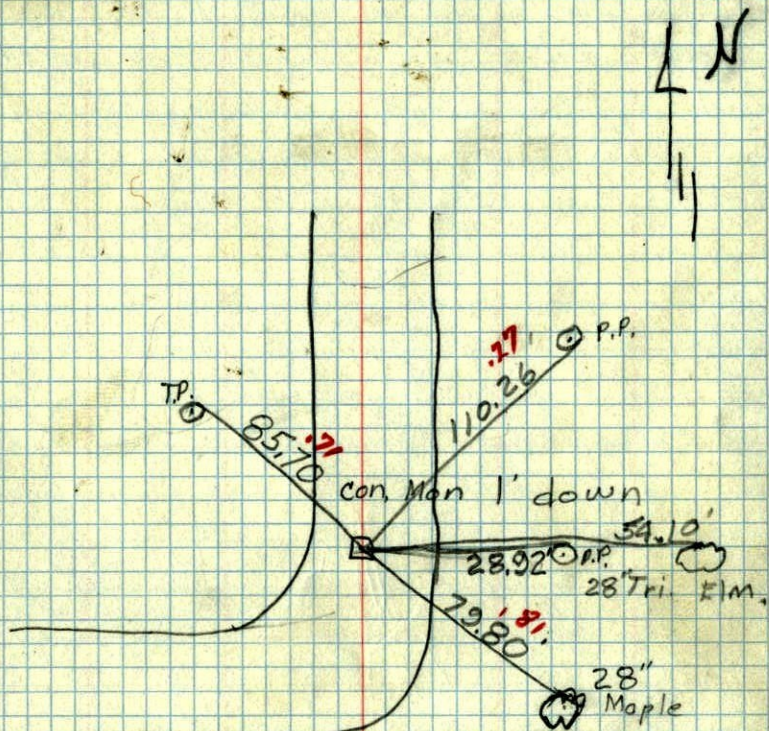
7/19/60
Giddings
Carlson

Entered
H.L.

TEMPERATURE CORRECTED
AND HORIZONTALLY
TAPED MEASUREMENTS

ROLAND W. ANDERSON
COUNTY SURVEYOR
ANOKA COUNTY, MINNESOTA

NW Corn. Sec. 8, T. 33 R. 24

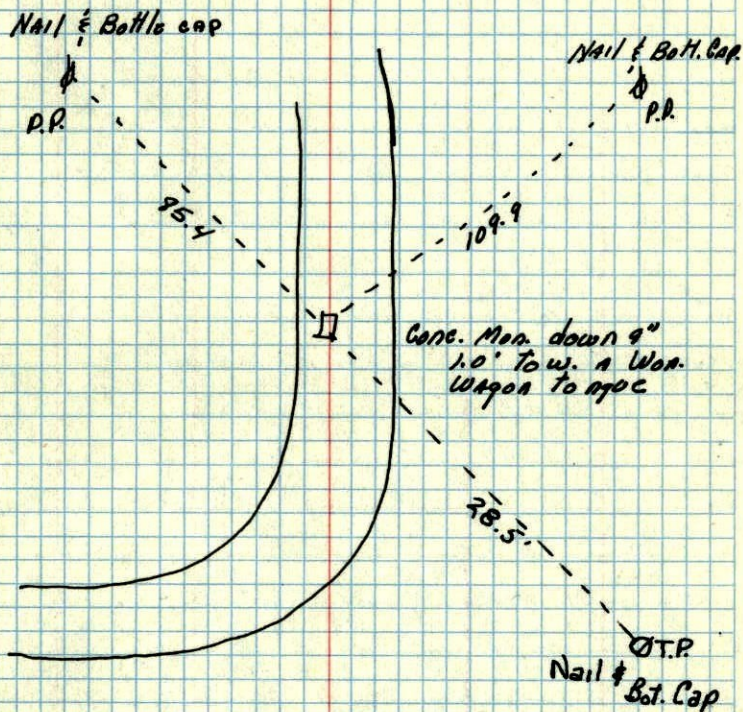


2/21/60

TC

July 19, 1960
Temp. 85°
Giddings
Carlson

NW. Cor. of Sec. 8 T. 33 R. 24



May 1958
Minn. State Hwy Dept.

NW Corn. sec. 8, T 33, R 24

May 1958

