

CERTIFICATE OF LOCATION OF GOVERNMENT CORNER

County of Anoka

State of Minnesota

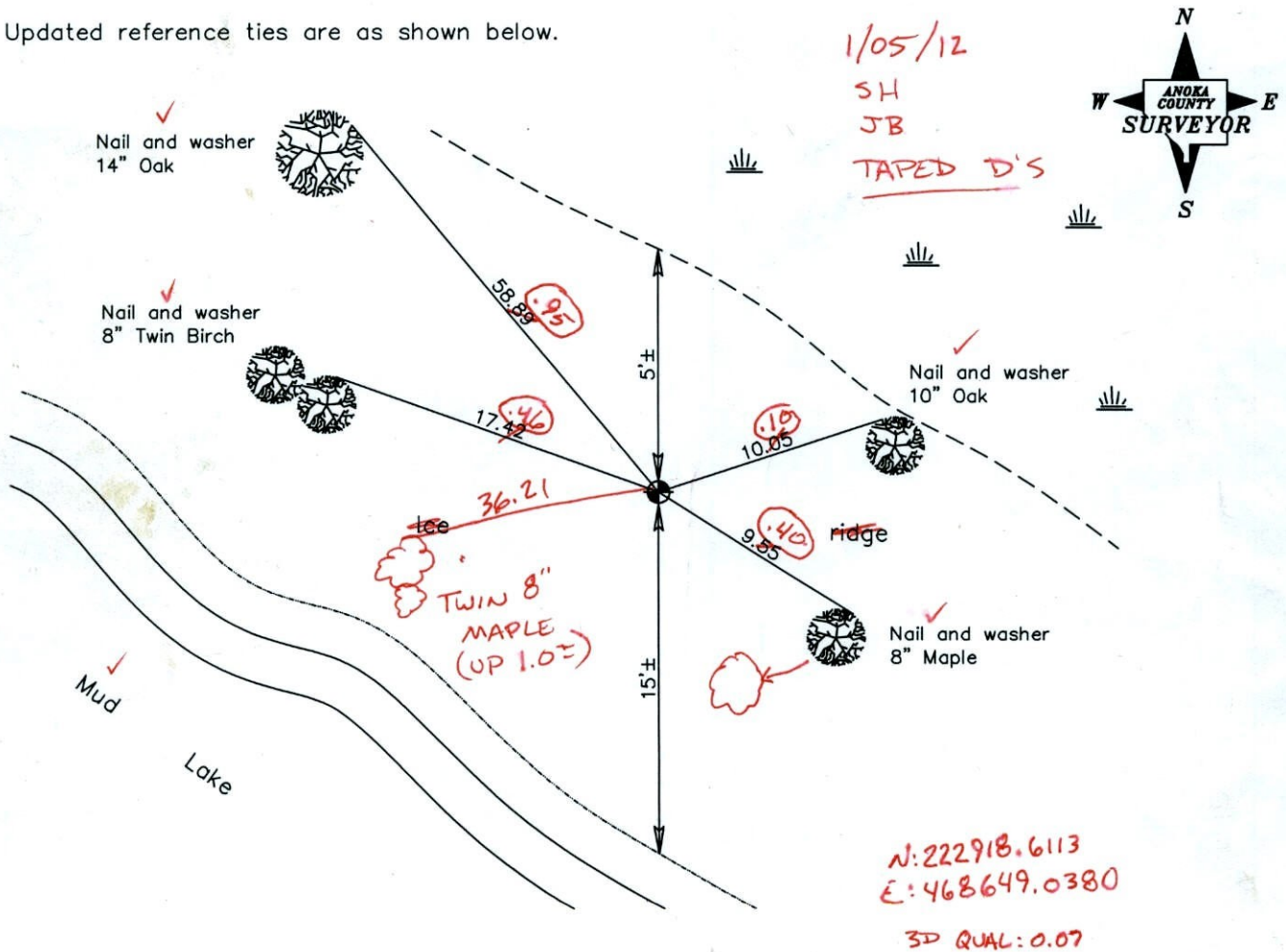
Witness Corner of Sec. 6 Township 33 Range 24
 (on west line of section)

On the 15th day of June, 1967, the described corner was evidenced by area resurvey

and to perpetuate the location of said corner, at the exact location thereof, a permanent marker was placed consisting of a cast iron monument

AND on the ___ day of _____, _____, said permanent marker was _____

Updated reference ties are as shown below.



Revised date
7/01/97
5/08/01

N.A.D. 1983 Coordinates (1996 Adjustment)	
County Project Coordinates	
Northing	<u>222918.5943</u>
Easting	<u>468649.0440</u>
Date	<u>5/08/01</u>

I hereby certify that this United States public land survey monument record is correct and complete to the best of my knowledge and belief.

_____, Anoka County Surveyor

Minnesota License Number _____

CERTIFICATE OF LOCATION OF GOVERNMENT CORNER

County of Anoka

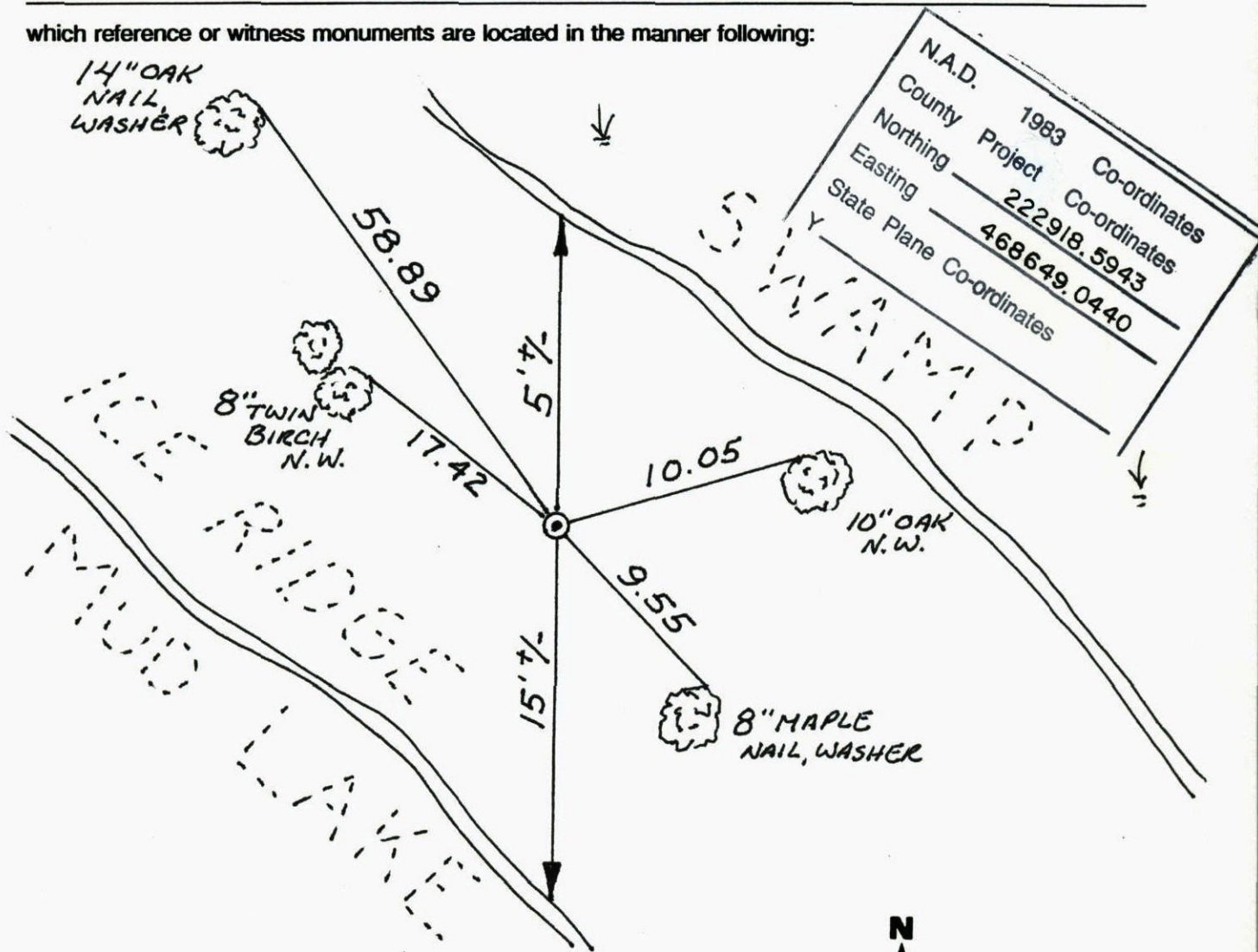
State of Minnesota

WITNESS TO S.E. CORNER OF WEST LINE Corner of Sec. 6 Township 33 Range 24

I hereby certify that on the 15 day of JUNE, 1967, I found the described corner which was evidenced by AREA RESURVEY

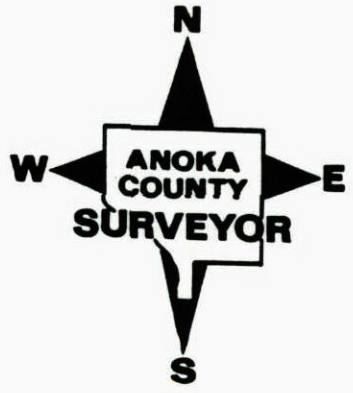
and I further certify that to perpetuate the location of said corner, I did, at the exact location thereof, place a permanent marker consisting of C.I.M.

which reference or witness monuments are located in the manner following:



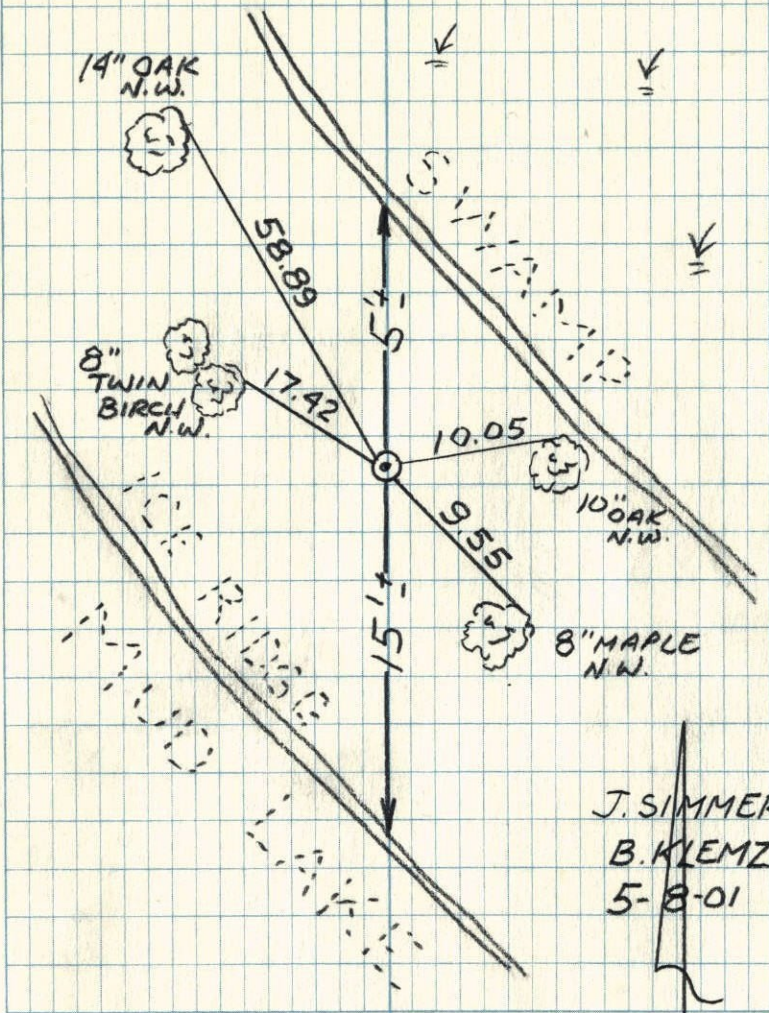
N.A.D. 1983 Co-ordinates
 County Project Co-ordinates
 Northing 222918.5943
 Easting 468649.0440
 State Plane Co-ordinates

Revised date	Revised date	Revised date
7-1-97		
5-8-01		



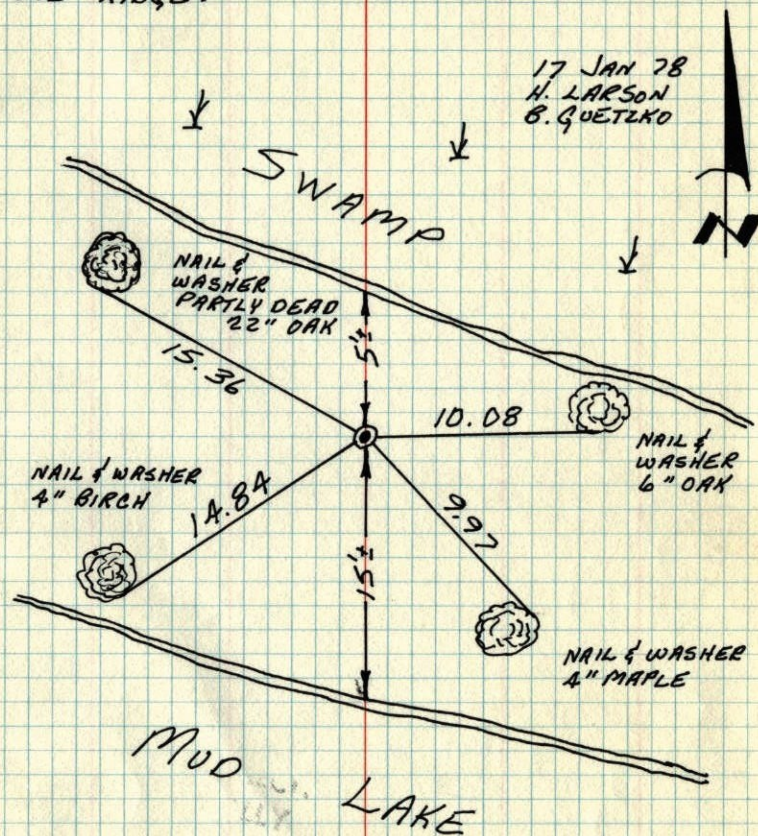
WITNESS TO SEC. 6 T33 R24
WEST LINE

GPS & RETIED C.I.M.



W.C. ON WEST LINE SECTION 6
T33 - R24

RETIED CAST IRON MONUMENT SET IN 1967
BY M. D. ANDERSON. CAST IRON FLUSH ON
ICE RIDGE.



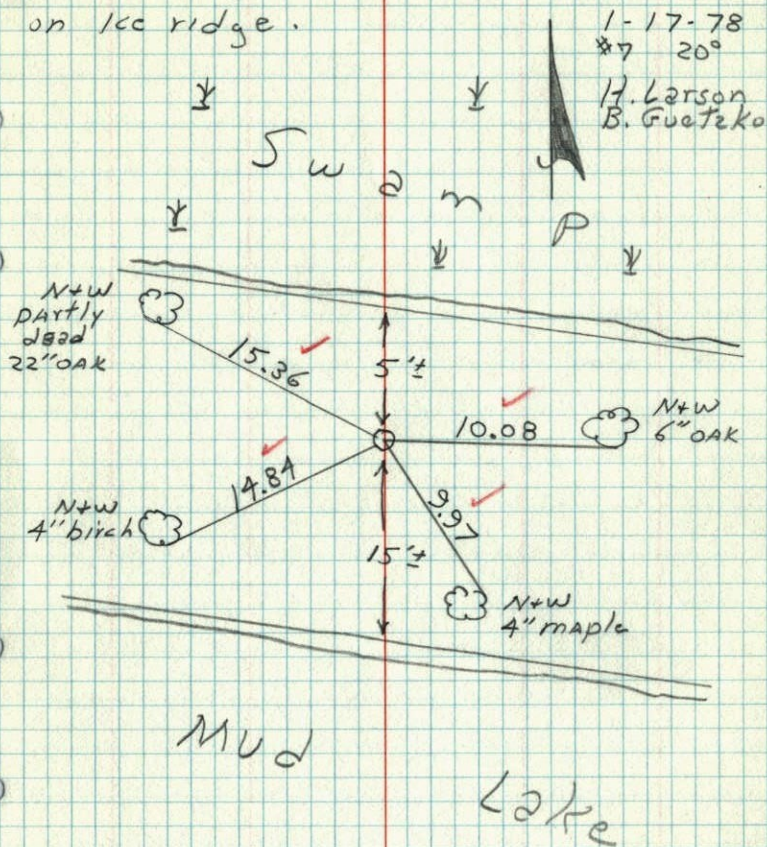
TEMPERATURE CORRECTED
AND HORIZONTALLY
TAPED MEASUREMENTS

ROLAND W. ANDERSON
COUNTY SURVEYOR
ANOKA COUNTY, MINNESOTA

W.C. on West line Section 6 T33R24

Retied cast iron monument set

in 1967 by M.D. Anderson. C.I. Flush
on 1cc ridge.

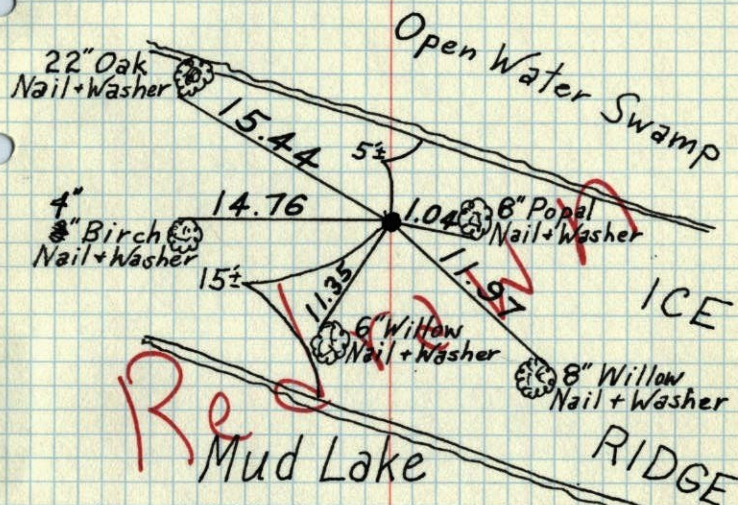


W.C. on West line Sec. 6 - T33-R24

North side Mud Lake

Set Cast Iron Monument flush

Set corner from area resurvey



June 15, 1967
M.D. Anderson
H. J. Larson
D. L. Powell
P. A. Fredrickson

checked
1-23-74
H. Larson

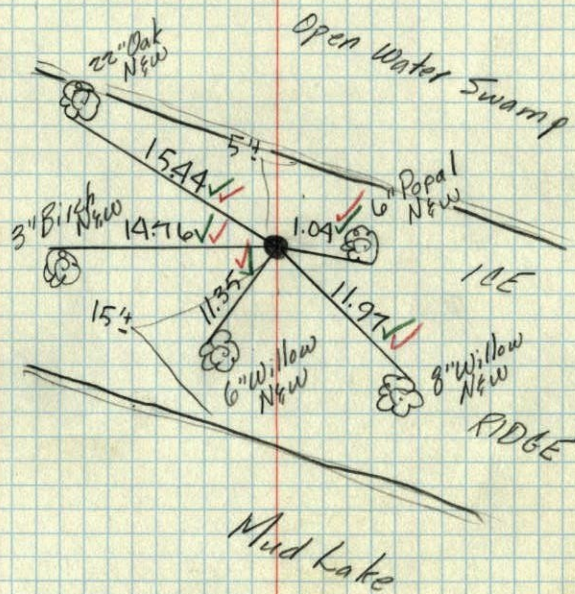
Wet - 6/21/68
Wet - 9/6/71

1-17-78
H. Larson
B. Guetzko

TEMPERATURE CORRECTED
AND HORIZONTALLY
TAPED MEASUREMENTS

ROLAND W. ANDERSON
COUNTY SURVEYOR
ANOKA COUNTY, MINNESOTA

W.C. on West line Sec. 6-T 33-R24
on North side Mud Lake
set C.I. Mon. Flush
set Cor. from area resurvey



June 15, 1967
M.D. Anderson
H.J. Larson
D.L. Jewell
P.A. Fredrickson

Temp 80 (with checkmark)
Tide 5 (with checkmark)