

CERTIFICATE OF LOCATION OF GOVERNMENT CORNER

County of Anoka State of Minnesota

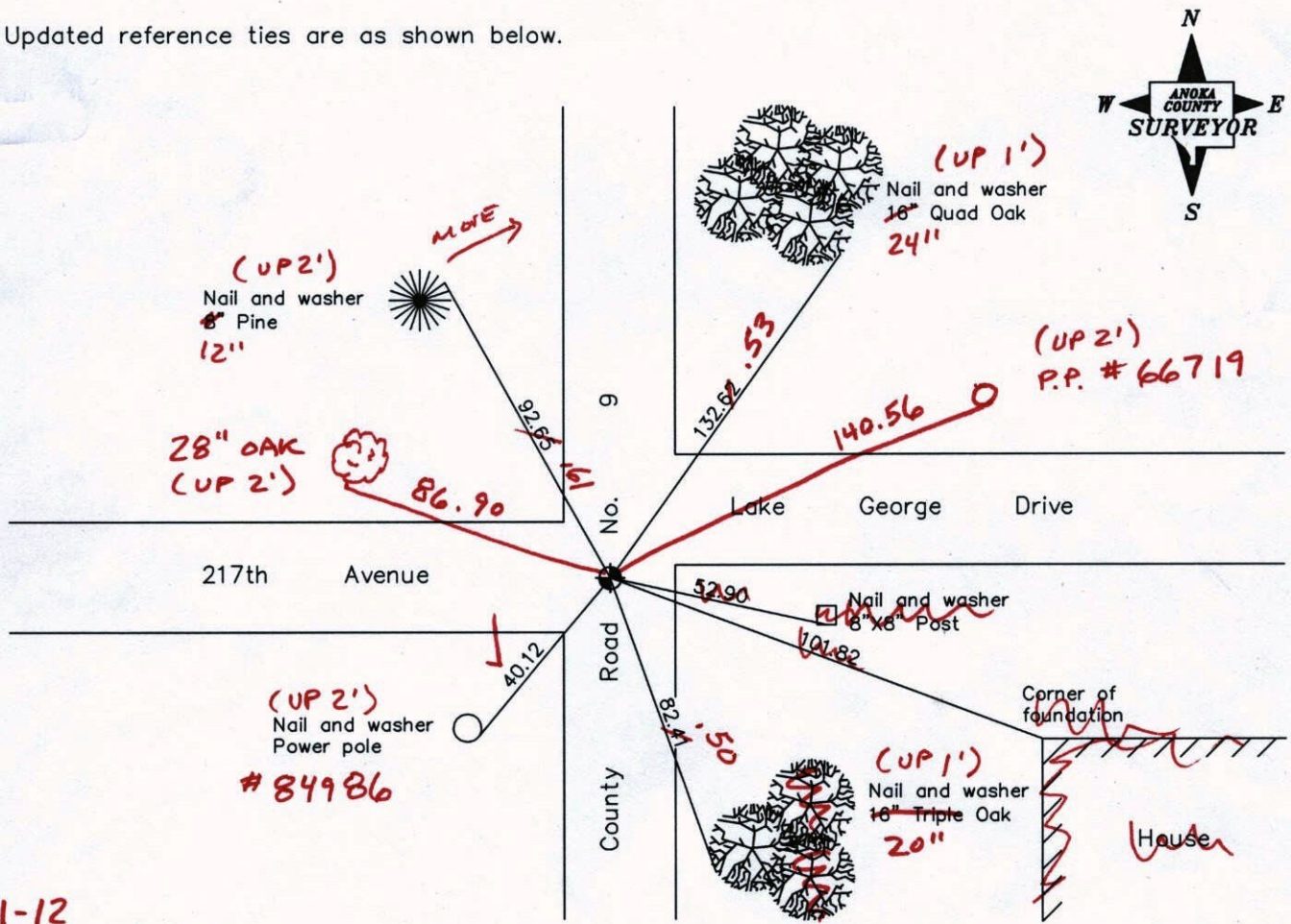
West 1/4 Corner of Sec. 9 Township 33 Range 24

On the 8th day of May, 1963, the described corner was evidenced by area resurvey

and to perpetuate the location of said corner, at the exact location thereof, a permanent marker was placed consisting of a cast iron monument (4' ± W. OF E)

AND on the ___ day of _____, _____, said permanent marker was _____

Updated reference ties are as shown below.



1-31-12
BK-SS
T/4 - VRS

Revised date
7/07/92
6/03/97
5/10/01

N.A.D. 1983 Coordinates (1996 Adjustment)	
County Project Coordinates	
Northing	219620.4507
Easting	479148.0607
Date	5/10/01

I hereby certify that this United States public land survey monument record is correct and complete to the best of my knowledge and belief.

_____, Anoka County Surveyor

Minnesota License Number _____

VRS 30 = 0.14 N = 219620.3337 E = 479147.9909

CERTIFICATE OF LOCATION OF GOVERNMENT CORNER

County of Anoka

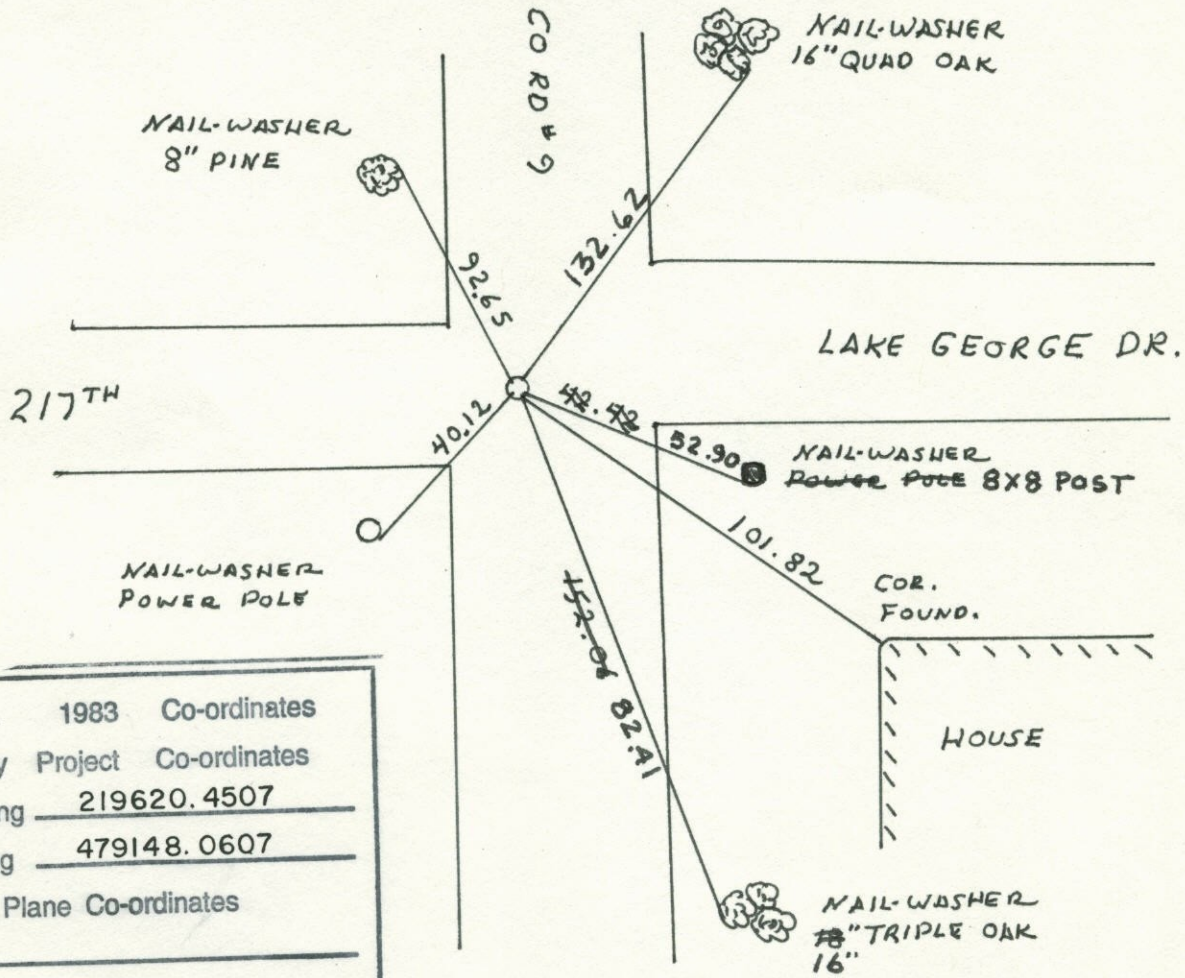
State of Minnesota

WEST 1/4 Corner of Sec. 9 Township 33 Range 24

I hereby certify that on the 8TH day of MAY, 19 63, I found the described corner which was evidenced by AREA RESURVEY

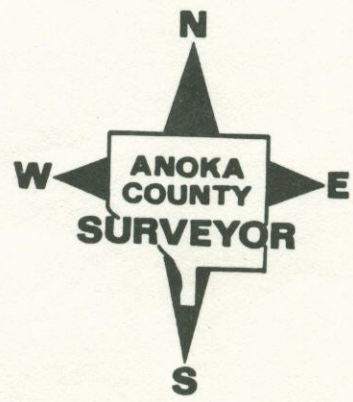
and I further certify that to perpetuate the location of said corner, I did, at the exact location thereof, place a permanent marker consisting of CAST IRON MONUMENT

which reference or witness monuments are located in the manner following:



N.A.D.	1983	Co-ordinates
County	Project	Co-ordinates
Northing	<u>219620.4507</u>	
Easting	<u>479148.0607</u>	
State Plane Co-ordinates		
Y	_____	
X	_____	
Date	_____	

Revised date	Revised date	Revised date
7-21-87		
7-7-92		
6-3-97		
5-10-01		

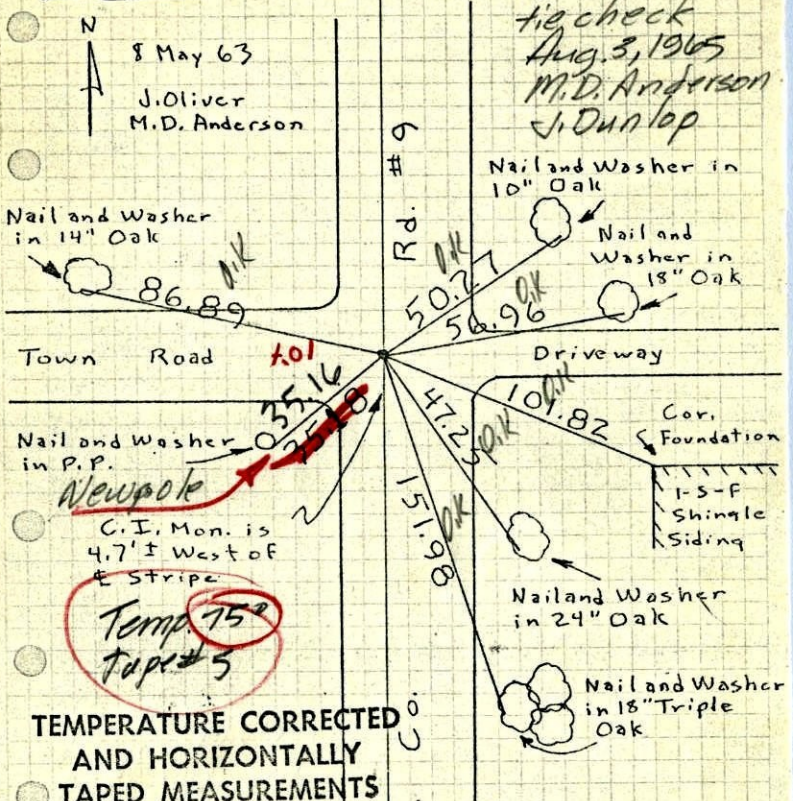


W 1/4 Cor. Sec. 9, T33, R24

Found 1" I.P. down 18" - Checks remaining

- Cartwright Ties to Conc. Mon by 0.15' each way. Drove I.P. down and Set Cast Iron Monument Flush with Blacktop.

Monument Flush with Blacktop.



TEMPERATURE CORRECTED AND HORIZONTALLY TAPED MEASUREMENTS

Entered H.L.

ROLAND W. ANDERSON
COUNTY SURVEYOR
ANOKA COUNTY, MINNESOTA

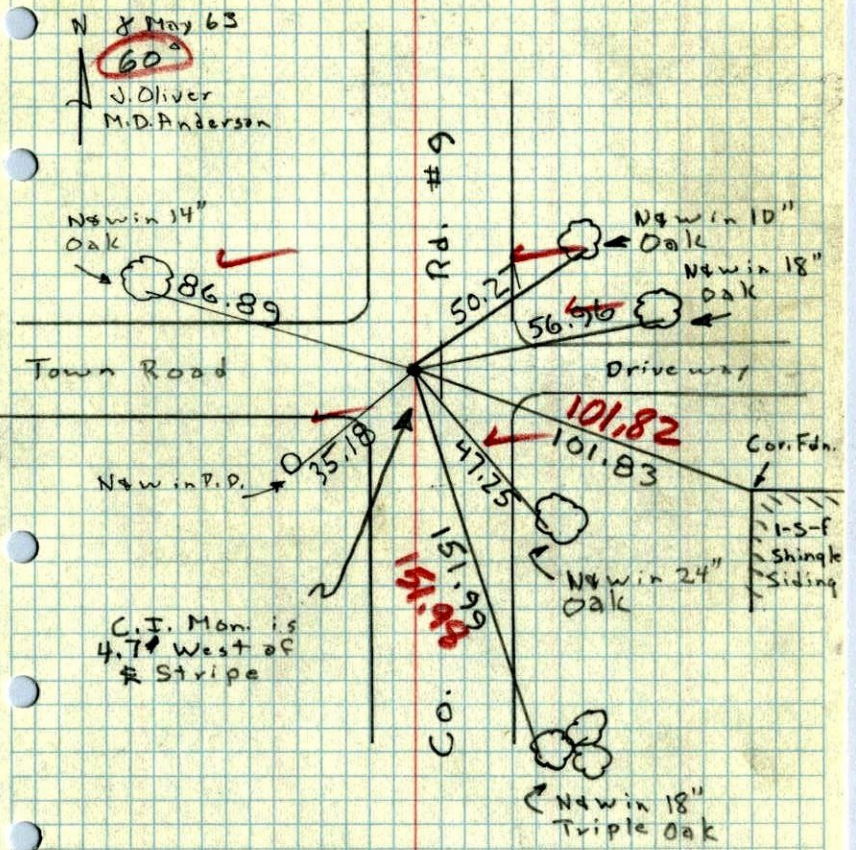
tie check
Aug. 3, 1965
M.D. Anderson
J. Dunlop

W 1/4 Cor. Sec. 9, T33, R24

Found 1" I.P. down 18" - Checks ^{remaining} Cartwrights

- ties to Conc. Mon by 0.15' each way. Drove I.P. down and Set Cast Iron Monument Flush with Blacktop.

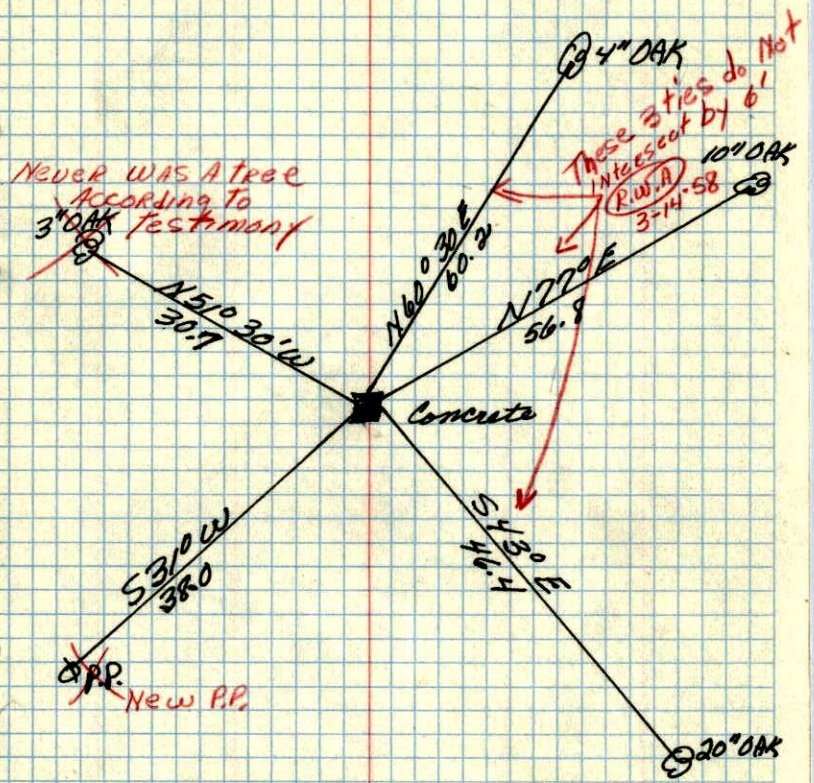
Flush with Blacktop.



C.I. Mon. is 4.7' West of # Stripe

W 1/4 cor. of Sec 9 T. 33. R. 24

Conc. Mon.



Aug 24, 1946
Cartwright