

CERTIFICATE OF LOCATION OF GOVERNMENT CORNER

County of Anoka

State of Minnesota

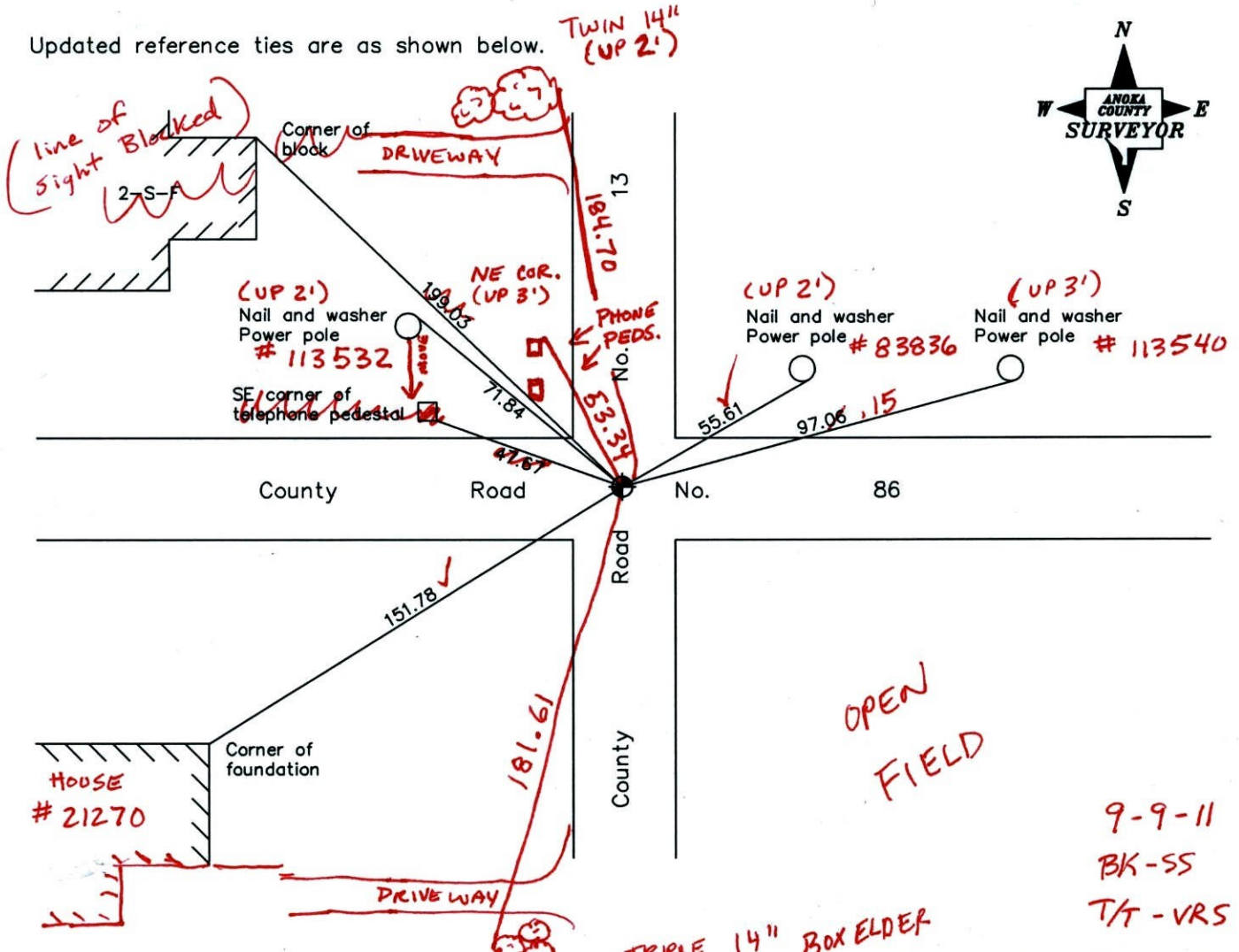
Northwest Corner of Sec. 13 Township 33 Range 24

On the 17th day of July, 1962, the described corner was evidenced by a 16" diameter flat rock with a faint cross on top

and to perpetuate the location of said corner, at the exact location thereof, a permanent marker was placed consisting of a cast iron monument ✓

AND on the ___ day of _____, _____, said permanent marker was _____

Updated reference ties are as shown below.



Revised date

7/17/81
5/27/97
4/18/01

N.A.D. 1983 Coordinates (1996 Adjustment) (UP 2')

County Project Coordinates	
Northing	<u>216907.9211</u>
Easting	<u>494971.7166</u>
Date	<u>4/18/01</u>

I hereby certify that this United States public land survey monument record is correct and complete to the best of my knowledge and belief.

_____, Anoka County Surveyor

Minnesota License Number _____

VRS 3D = 0.05

N = 216907.877

E = 494971.730

CERTIFICATE OF LOCATION OF GOVERNMENT CORNER

County of Anoka

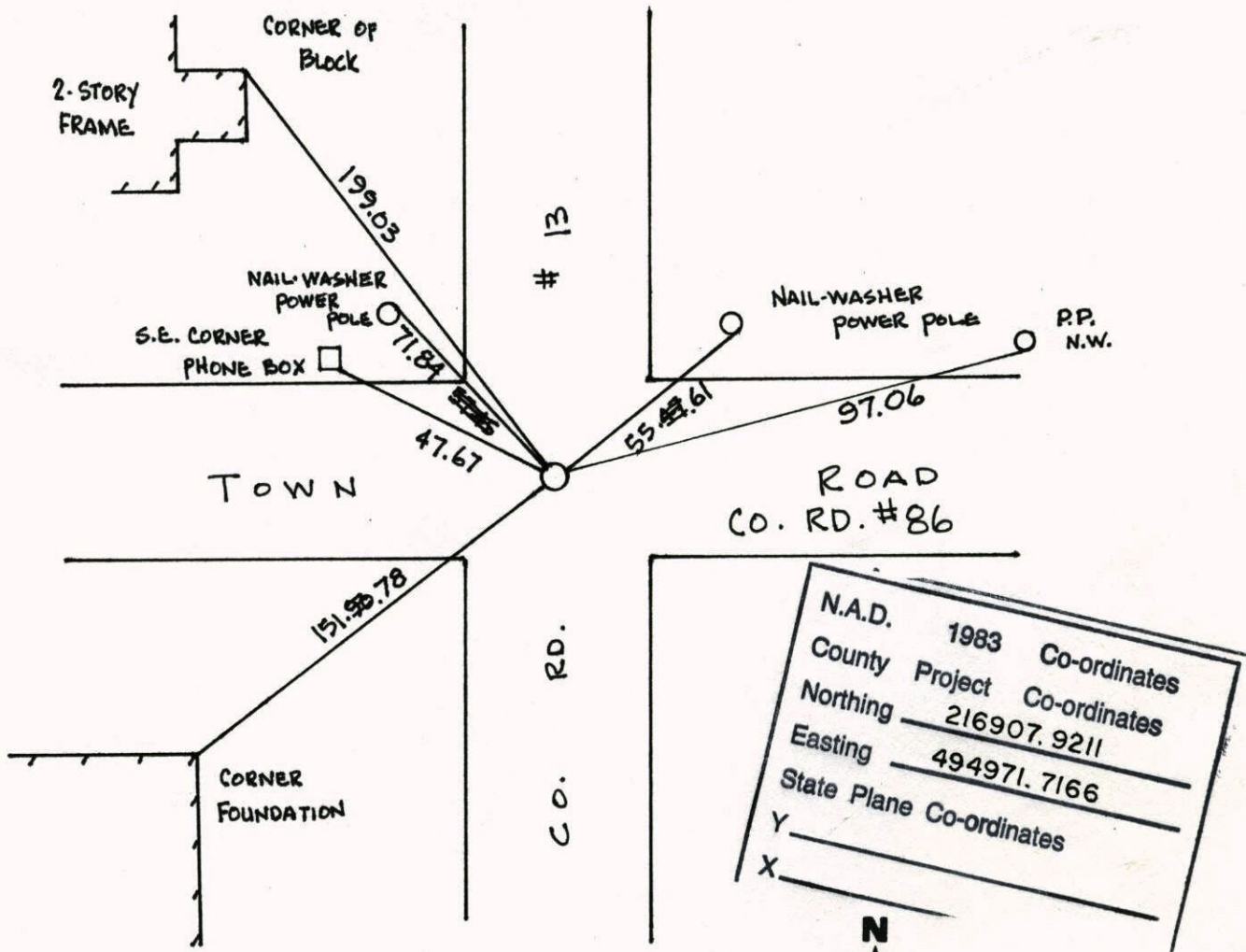
State of Minnesota

NORTHWEST Corner of Sec. 13 Township 33 Range 24

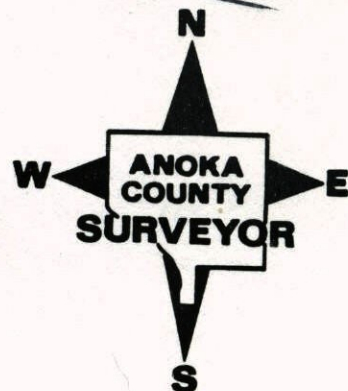
I hereby certify that on the 17TH day of JULY, 1962, I found the described corner which was evidenced by A 16" DIAMETER FLAT ROCK WITH A FAINT CROSS ON TOP

and I further certify that to perpetuate the location of said corner, I did, at the exact location thereof, place a permanent marker consisting of CAST IRON MONUMENT

which reference or witness monuments are located in the manner following:



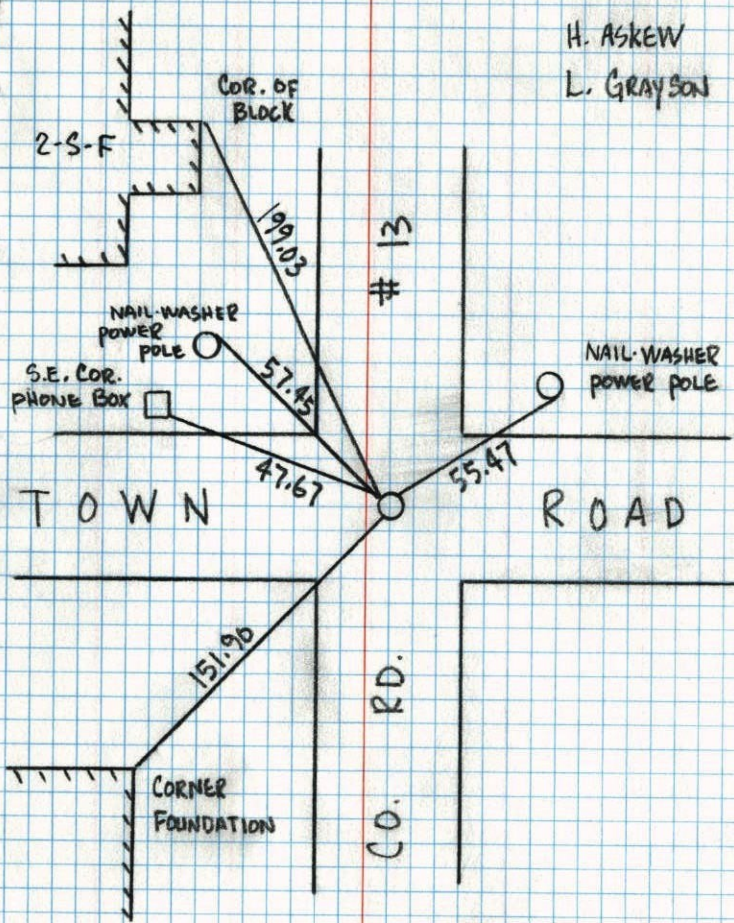
Revised date	Revised date	Revised date
9-3-64	5-27-97	
6-11-65	4-18-01	
9-11-68		
7-22-71		
7-1-75		
6-30-78		
7-17-81		



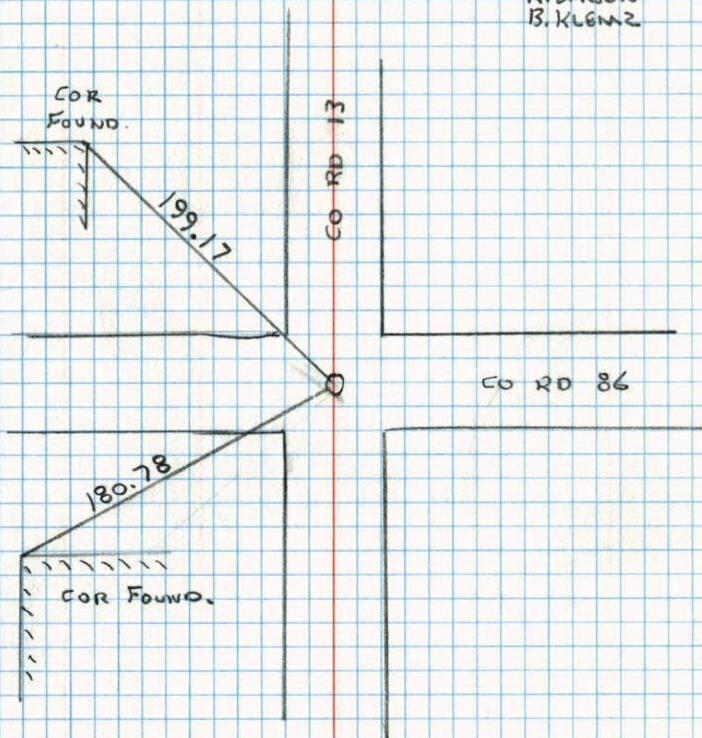
NORTHWEST COR. SEC 13 T33 R 24

RETIED CAST IRON MON.

5-27-97

H. ASKEW
L. GRAYSON

NW COR SEC, 13 T33 R24

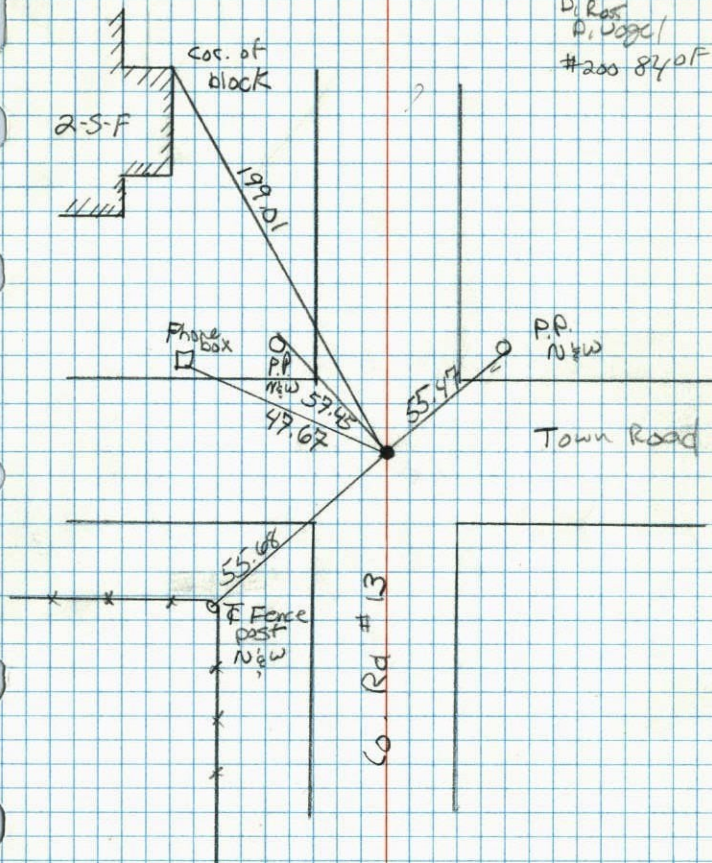
8-26-96
N. LARSON
B. KLENZ

N.W. Cor. Sec. 13, T33, R24

48

C.I. Flush with Blacktop, Tie check
8-8-84

G. LIPS
D. ROSS
D. VOGEL
#200 84 pf



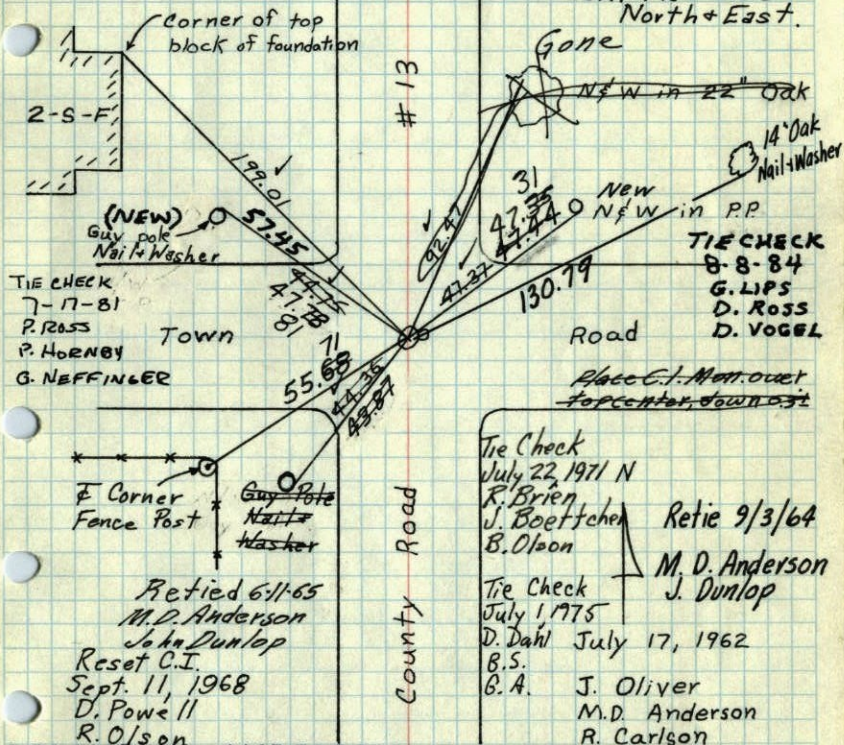
NW Cor. Sec. 13, T33, R24

48

Found 16" diameter flat rock down 6" with
faint cross on top. Punched hole with star
drill at cross and set 3/4" Iron pipe on East
Face of Stone and 0.78' East of hole in rock.

Stone is down 3.5 ft after Const
all poles were moved

Set Cast Iron Monument
Flush, PK's 2.00'
North + East.



ROLAND W. ANDERSON
COUNTY SURVEYOR
ANOKA COUNTY, MINNESOTA
Monument Raised
August 29, 1972
B. Olson J. Boettcher

TEMPERATURE CORRECTED
AND HORIZONTALLY
TAPED MEASUREMENTS

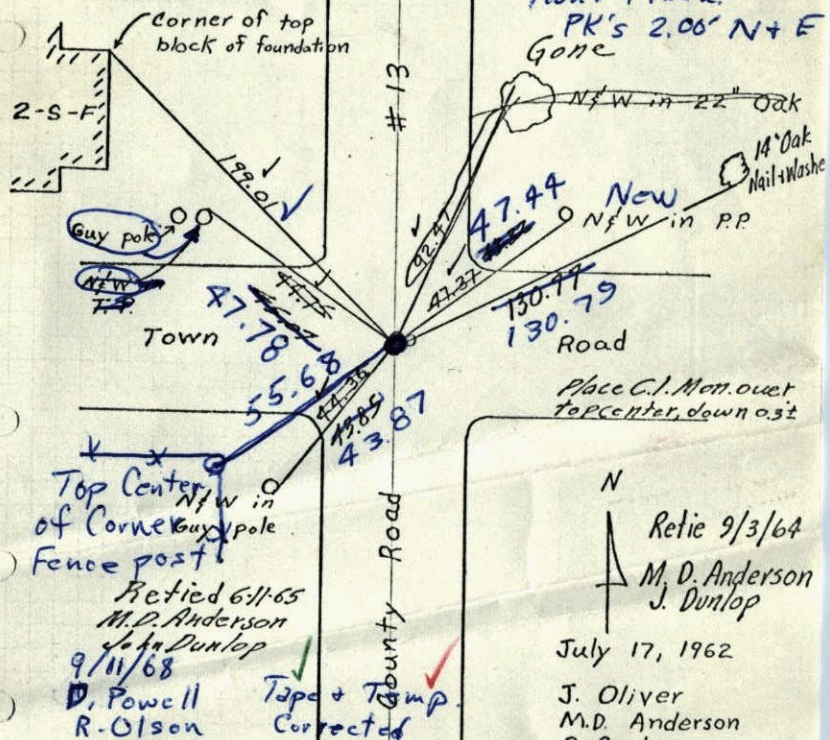
TIE CHECK
6-30-78
D. DAHL

NW Cor. Sec. 13, T33, R24

Found 16" diameter flat rock down 6" with faint cross on top. Punched hole with star drill at cross and set 3/4" Iron pipe on East face of Stone and 0.78' East of hole in rock

Stone is down 3.5' after const
all poles were moved

Set C.I.
Mon. flush
PK's 2.00' N + E
Gone



Place C.I. Mon. over
to center, down 0.3'

N
Retie 9/3/64
M. D. Anderson
J. Dunlop

July 17, 1962
J. Oliver
M. D. Anderson
R. Carlson

ROLAND W. ANDERSON
COUNTY SURVEYOR
ANOKA COUNTY, MINNESOTA

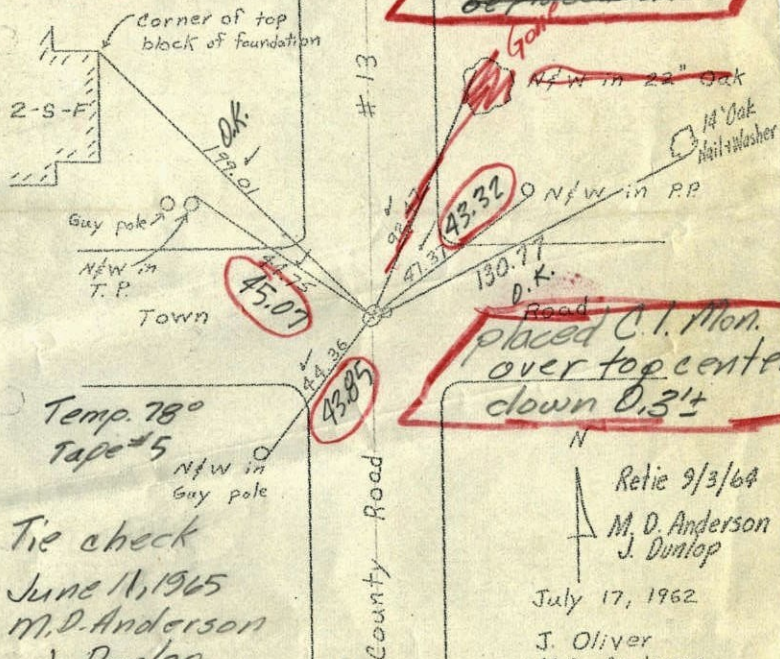
TEMPERATURE CORRECTED
AND HORIZONTALLY
TAPED MEASUREMENTS

NW Cor. Sec. 13, T33, R24

Found 16" diameter flat rock down 6" with faint cross on top. Punched hole with star drill at cross and set 3/4" Iron pipe on East face of Stone and 0.78' East of hole in rock

Stone is down 3.5' after const.

all poles were moved - East Iron should
be placed here



Temp 78°
Tape #5

Tie check
June 11, 1965
M. D. Anderson
J. Dunlop

ROLAND W. ANDERSON
COUNTY SURVEYOR
ANOKA COUNTY, MINNESOTA

TEMPERATURE CORRECTED
AND HORIZONTALLY
TAPED MEASUREMENTS

Retie 9/3/64
M. D. Anderson
J. Dunlop

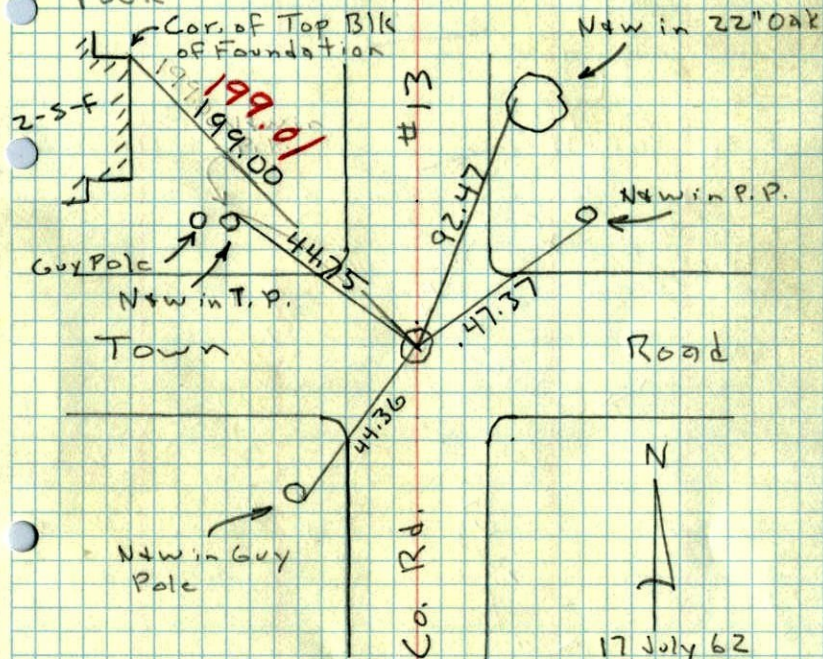
July 17, 1962
J. Oliver
M. D. Anderson
R. Carlson

Entered

NW Cor. Sec. 13, T33, R24

Found 16" Dia. Flat Rock ^{down 6"} with Faint

- Cross on Top - Punched hole with Star drill at cross and - Set 3/4" I.P. on E. Face of Stone & 0.78' E. of Hole in rock



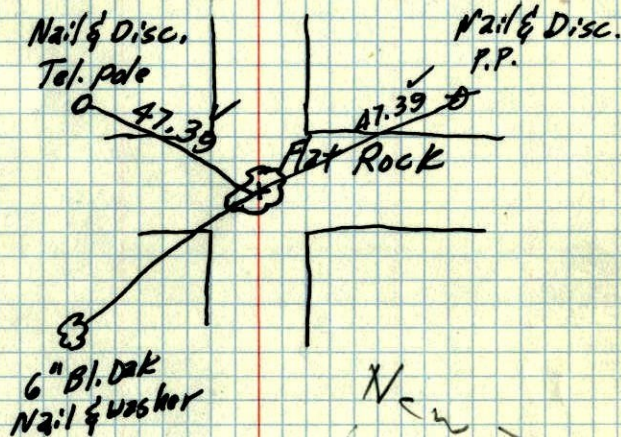
17 July 62
76°
J. Oliver
M.D. Anderson
R. Carlson

Temp
Corr

5/7/59 21

NW Corner Sec. 13, T33, R24

Wayne Ridge had one Bearing tree to this corner from 1915. Swinging an arc from the tree, we dug down 6" in \pm of Roads (Dirt) and found a stone 16" in diameter being fairly level on top. Could determine that some one had tried to chisel a cross on top.



New Tics
in New Tic
Book