

# CERTIFICATE OF LOCATION OF GOVERNMENT CORNER

County of Anoka                      State of Minnesota

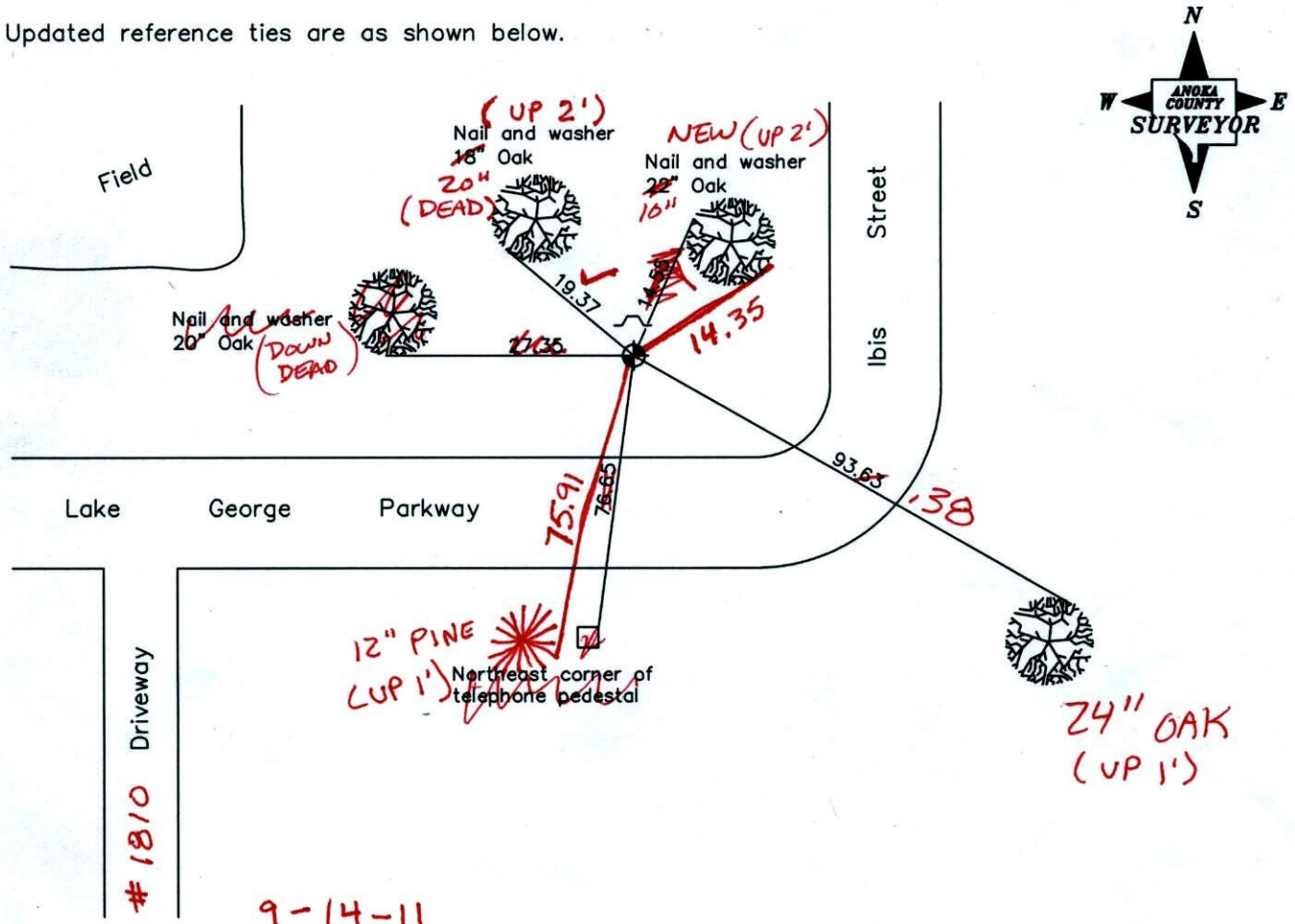
Witness Corner of Sec. 15 Township 33 Range 24  
 (on north line of section)

On the 19th day of March, 1977, the described corner was evidenced by area resurvey

and to perpetuate the location of said corner, at the exact location thereof, a permanent marker was placed consisting of a cast iron monument with a sign and post on the north side  
(MON. DOWN 1.5' ±)

AND on the \_\_\_ day of \_\_\_\_\_, \_\_\_\_\_, said permanent marker was \_\_\_\_\_

Updated reference ties are as shown below.



9-14-11  
BK-SS  
TAPED

Revised date
7/13/92
6/23/97
5/14/01

N.A.D. 1983 Coordinates (1996 Adjustment)	
County Project Coordinates	
Northing	<u>216896.8426</u>
Easting	<u>488383.9561</u>
Date	<u>5/14/01</u>

I hereby certify that this United States public land survey monument record is correct and complete to the best of my knowledge and belief.

\_\_\_\_\_ Date \_\_\_\_\_

\_\_\_\_\_, Anoka County Surveyor

Minnesota License Number \_\_\_\_\_



# CERTIFICATE OF LOCATION OF GOVERNMENT CORNER

County of Anoka

State of Minnesota

Witness                      Corner of Sec. 15 Township 33 Range 24  
 ON NORTH LINE

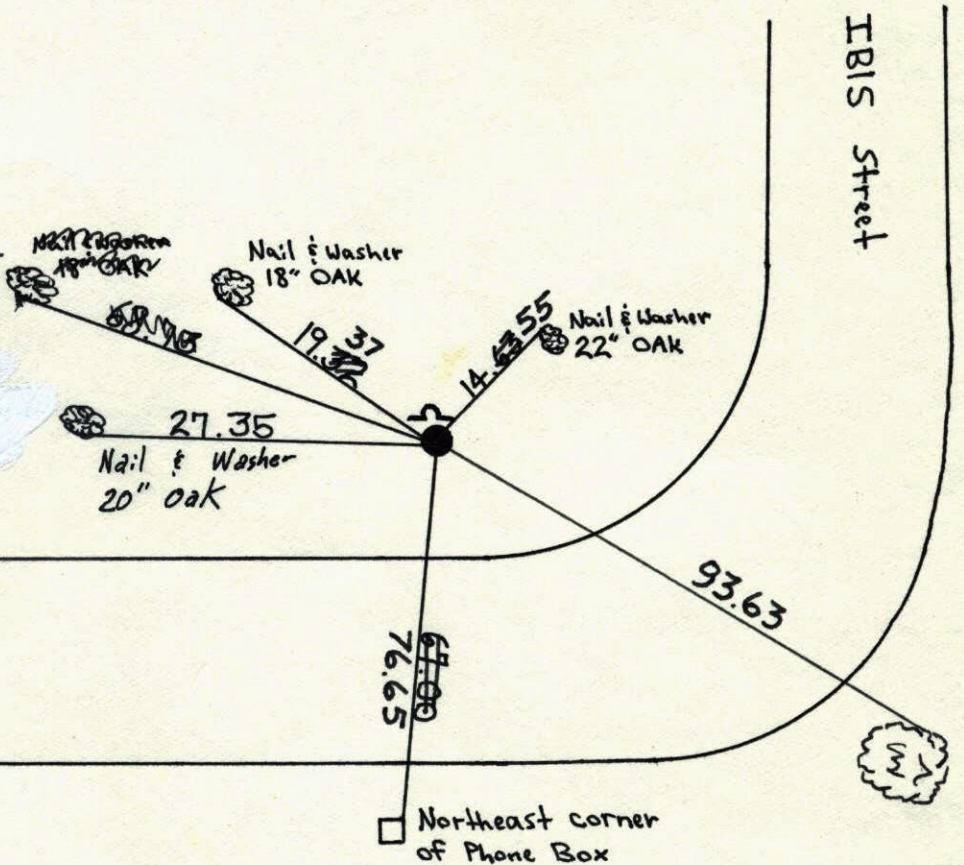
I hereby certify that on the 19<sup>th</sup> day of March, 1977, I found the described corner which was evidenced by Area Resurvey

and I further certify that to perpetuate the location of said corner, I did, at the exact location thereof, place a permanent marker consisting of CAST IRON MONUMENT SIGN AND POST ON NORTH SIDE

which reference or witness monuments are located in the manner following:

Field

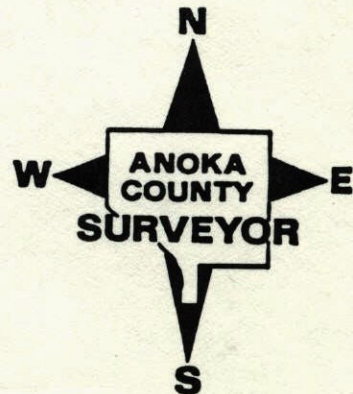
N.A.D.	1983	Co-ordinates
County Project		Co-ordinates
Northing	<u>216896.8426</u>	
Easting	<u>488383.9561</u>	
State Plane Co-ordinates		
Y		
X		



LAKE GEORGE PARKWAY

DRIVEWAY

Revised date	Revised date	Revised date
7-29-87		
7-13-92		
6-23-97		
5-14-01		

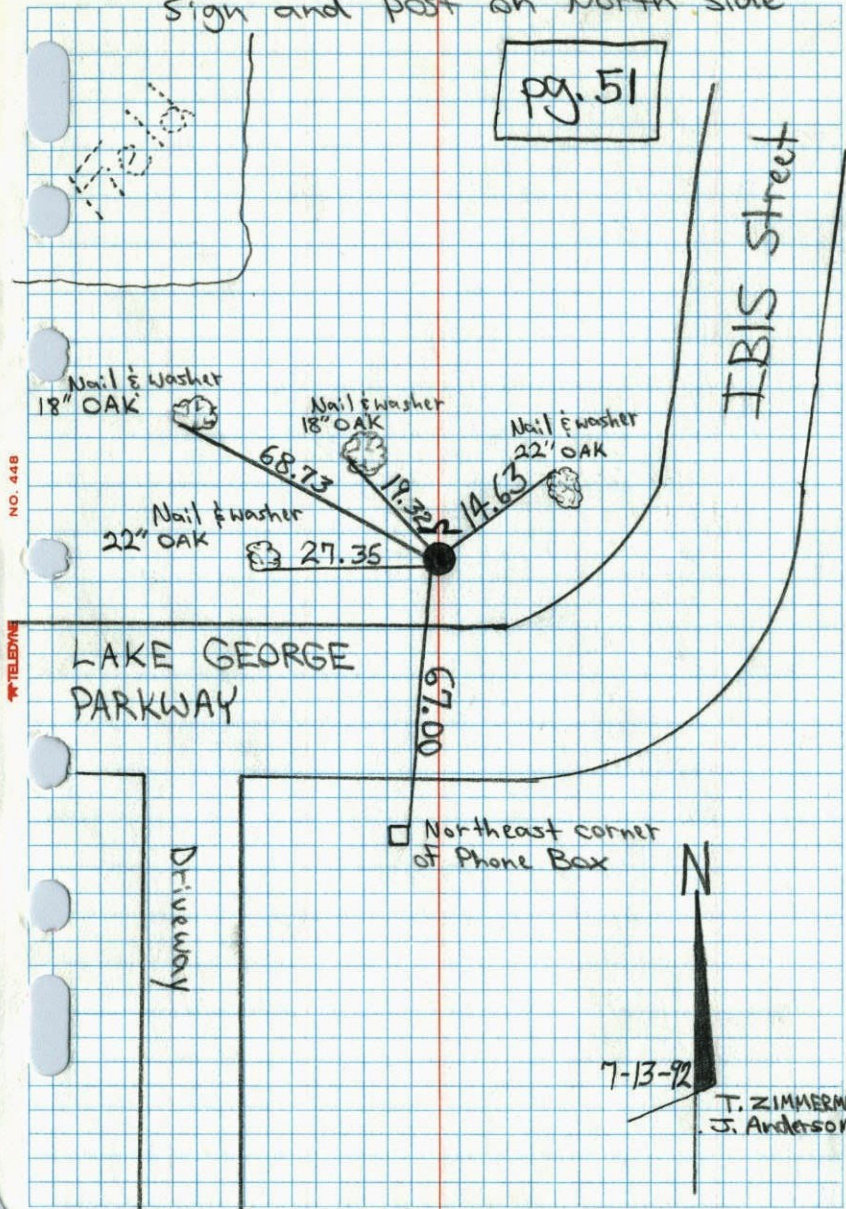




Witness corner of Sec. 15 T. 33 R. 24  
 on NORTH LINE (west side of Grass Lake)  
 Area Resurvey, Cast Iron Monument  
 Sign and post on North Side

pg. 51

IBIS Street



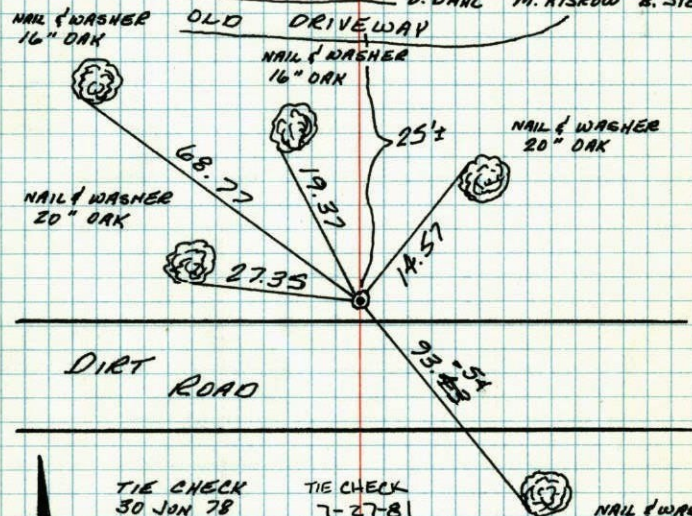
7-13-92

T. ZIMMERMAN  
 J. Anderson

WITNESS CORNER ON NORTH LINE  
 SECTION 15-T33-R24 ON WEST  
 SIDE OF GRASS LAKE

SET CAST IRON MONUMENT FROM AREA RESURVEY  
 SET STEEL SIGN POST AND WARNING SIGN 1/2' NORTN.  
 19 MAR 77  
 M.O. ANDERSON +  
 H.J. LARSON +

RESET CAST IRON AFTER ROAD CONSTRUCTION. CAST IRON  
 DOWN 1'  
 30 JUN 78  
 O. DANL M. KISROW B. STEPHENS



TIE CHECK  
 30 JUN 78  
 O. DANL  
 M. KISROW  
 B. STEPHENS

TIE CHECK  
 7-27-81  
 P. ROSS  
 P. HORNBY  
 G. NEFFINGER

TIE CHECK  
 8-13-84  
 G. LIPS  
 D. ROSS  
 D. VOGEL

NAIL & WASHER  
 10" OAK

TEMPERATURE CORRECTED  
 AND HORIZONTALLY  
 TAPED MEASUREMENTS

ROLAND W. ANDERSON  
 COUNTY SURVEYOR  
 ANOKA COUNTY, MINNESOTA



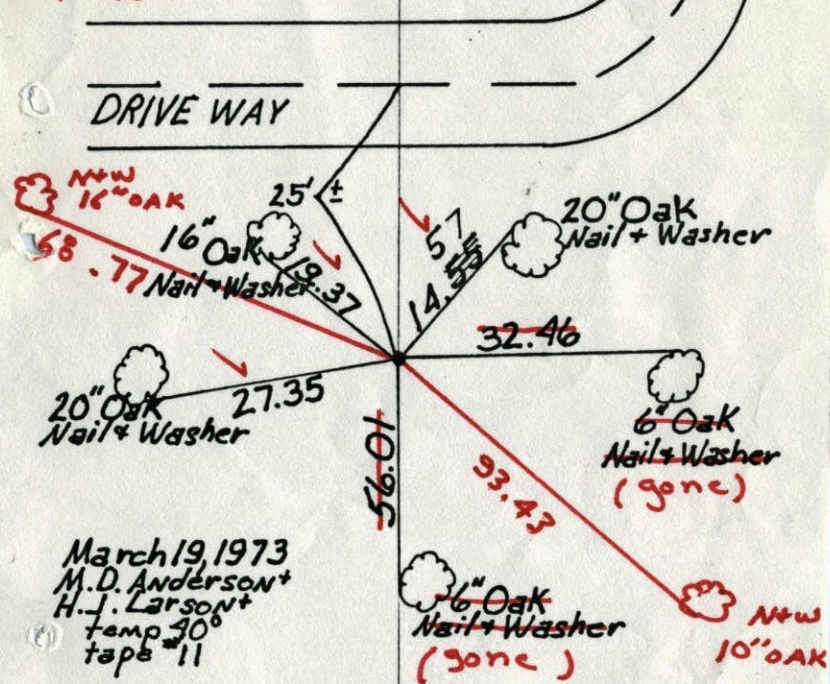
Witness Corner on North line Sec. 15-T33-R24

On W. Side Grass Lake

Set Cast Iron Mon. from area resurvey  
Set Steel sign post & warning sign  $\frac{1}{2}' \pm$  North

Cor. removed For New Road construction

9-14-77 H. Larson, B. Guetzko, J. Boettcher  
#7 75°



March 19, 1973  
M.D. Anderson +  
H.J. Larson +  
temp 40°  
tape #11

Tie Check  
June 30 1975  
D. Dahl  
B. S.  
G. A.

TEMPERATURE CORRECTED  
AND HORIZONTALLY  
TAPED MEASUREMENTS

ROLAND W. ANDERSON  
COUNTY SURVEYOR  
ANOKA COUNTY, MINNESOTA

WITNESS CORNER ON NORTH LINE  
SECTION 15-T33-R24 ON  
WEST SIDE OF GRASS LAKE

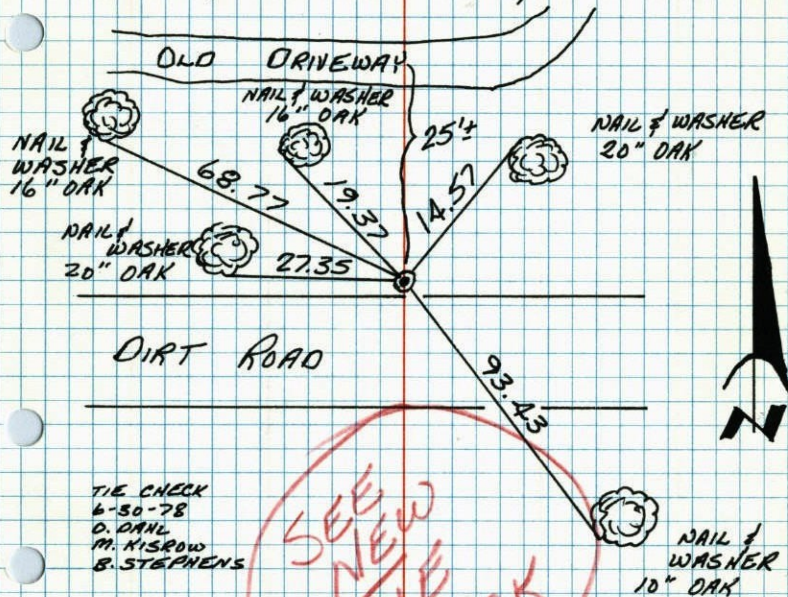
SET CAST IRON MONUMENT FROM AREA RESURVEY.

SET STEEL SIGN POST & WARNING SIGN  $\frac{1}{2}' \pm$

NORTH. MARCH 19, 1977 M.D. ANDERSON + H. LARSON +

CORNER REMOVED FOR NEW ROAD CONSTRUCTION

SEPT. 14, 1977 H. LARSON B. GUETZKO J. BOETTCHER



TIE CHECK  
6-30-78  
D. DAHL  
M. KISROW  
B. STEPHENS

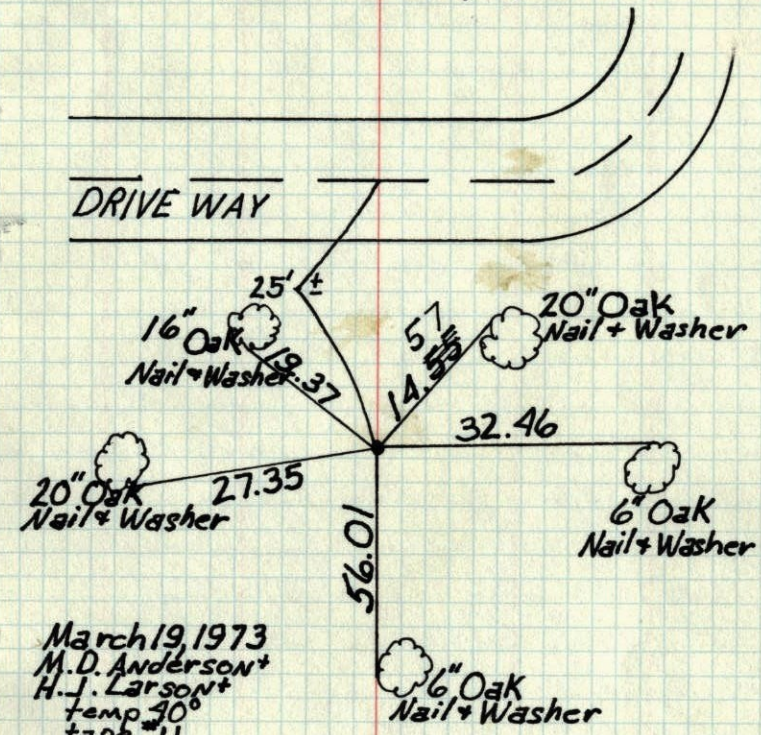
SEE NEW  
TIE  
BOOK

TEMPERATURE CORRECTED  
AND HORIZONTALLY  
TAPED MEASUREMENTS

ROLAND W. ANDERSON  
COUNTY SURVEYOR  
ANOKA COUNTY, MINNESOTA



W.C. Corner on North line Sec. 15-T33-R24  
On W. Side Grass Lake  
Set Cast Iron Mon. from area resurvey  
Set Steel sign post & warning sign 1/2' ± North



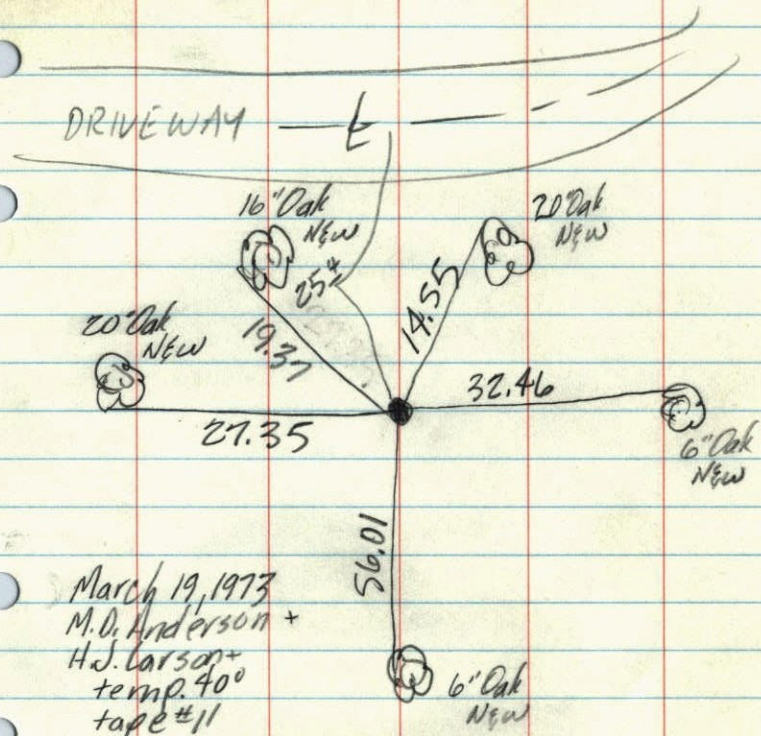
March 19, 1973  
M.D. Anderson +  
H.J. Larson +  
temp. 40°  
tape #11

Tie Check  
June 30, 1975  
D. Dahl  
B. S.  
G. A.

TEMPERATURE CORRECTED  
AND HORIZONTALLY  
TAPED MEASUREMENTS

ROLAND W. ANDERSON  
COUNTY SURVEYOR  
ANOKA COUNTY, MINNESOTA

W.C. on North line Sec. 15-T33-R24  
On West Side Grass Lake  
Set Cast Iron Mon. from area resurvey  
Set steel sign post & warning sign 1/2' ± N.



March 19, 1973  
M.D. Anderson +  
H.J. Larson +  
temp. 40°  
tape #11

P.K.



