

CERTIFICATE OF LOCATION OF GOVERNMENT CORNER

County of Anoka

State of Minnesota

Meander Corner of Sec. 10 Township 33 Range 24
 (on south line of southwest 1/4)

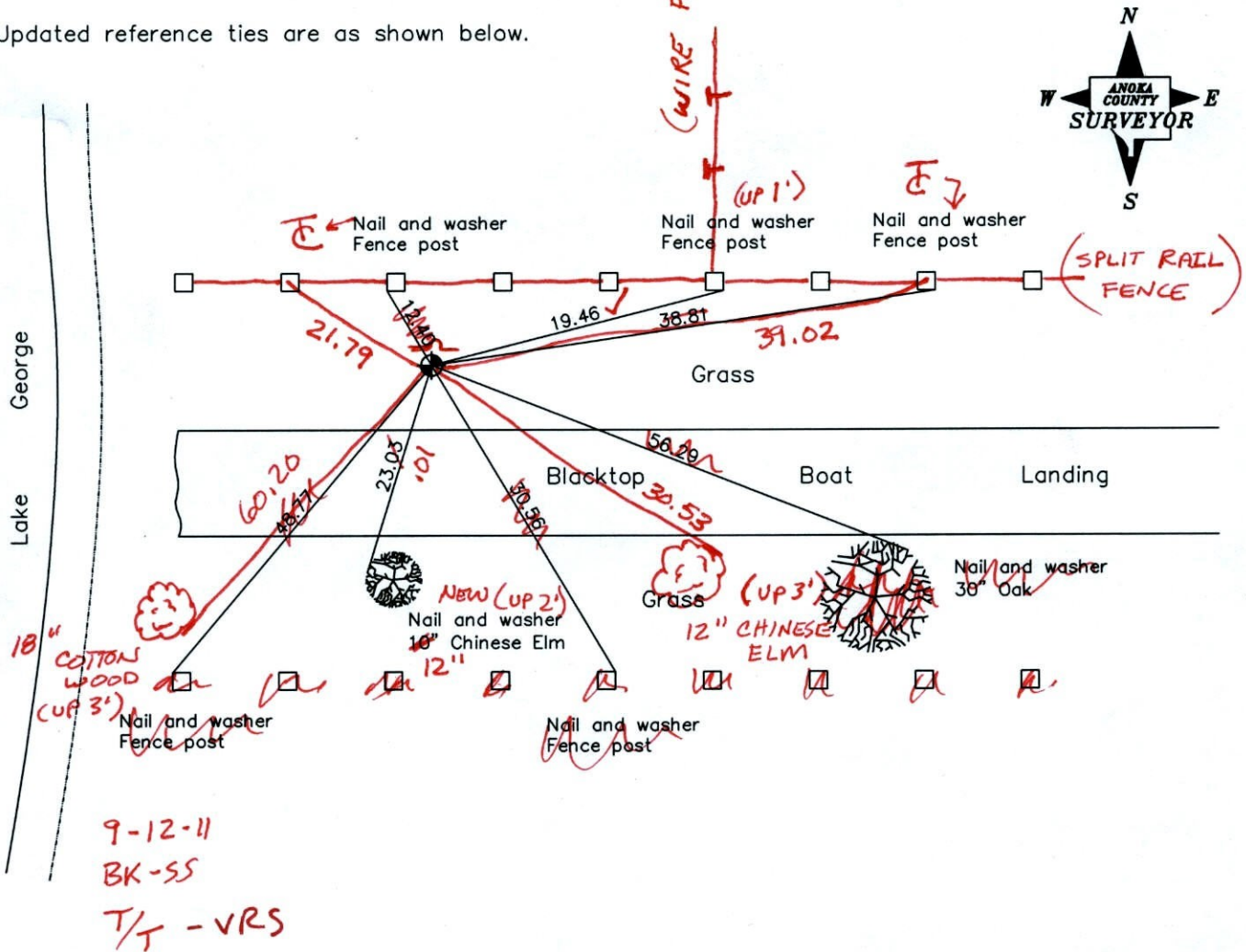
On the 3rd day of December, 1963, the described corner was evidenced by a concrete monument

and to perpetuate the location of said corner, at the exact location thereof, a permanent marker was placed consisting of a cast iron monument ✓ COULD USE SIGN & POST

ADDED SIGN & POST ON NORTH SIDE OF MON. FACING SOUTH
 (4-6-12)

AND on the ___ day of _____, _____, said permanent marker was _____

Updated reference ties are as shown below.



Revised date
7/09/92
6/10/97
5/14/01

N.A.D. 1983 Coordinates (1996 Adjustment)	
County Project Coordinates	
Northing	216904.4114
Easting	484936.9887
Date	5/14/01

I hereby certify that this United States public land survey monument record is correct and complete to the best of my knowledge and belief.

_____ Date _____

_____, Anoka County Surveyor

Minnesota License Number _____

VRS 3D = 0.08 N = 216904.4212 E = 484936.9366

CERTIFICATE OF LOCATION OF GOVERNMENT CORNER

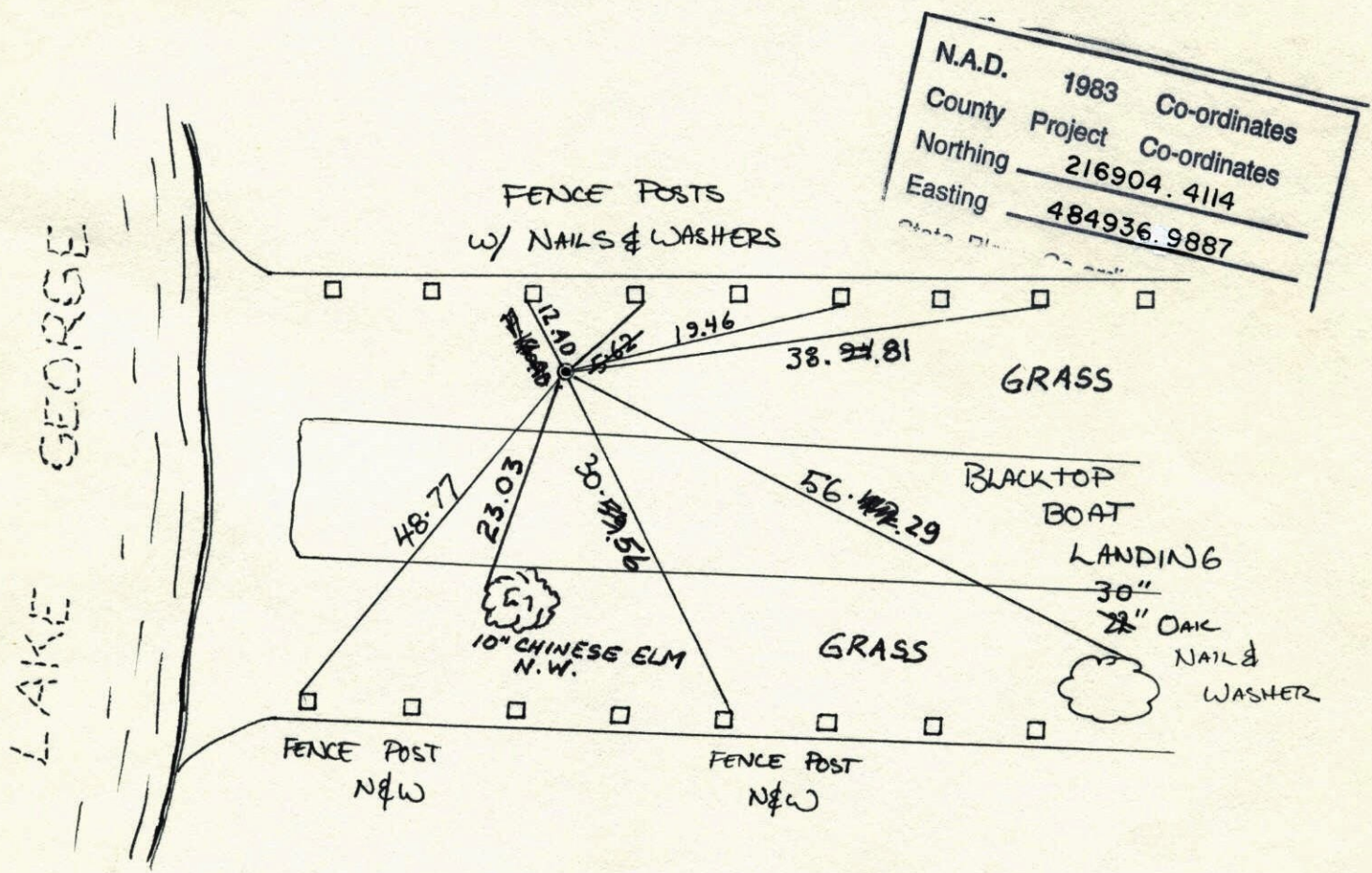
County of Anoka State of Minnesota

MEANDER SOUTH LINE
SOUTHEAST QUARTER Corner of Sec. 10 Township 33 Range 24

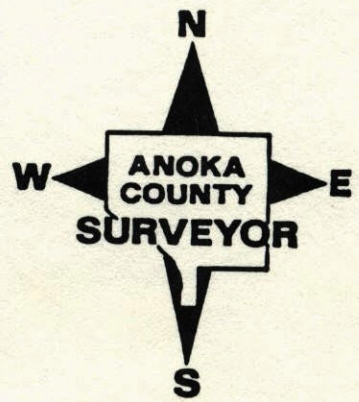
I hereby certify that on the 3 day of DECEMBER, 1963, I found the described corner which was evidenced by CONCRETE MONUMENT

and I further certify that to perpetuate the location of said corner, I did, at the exact location thereof, place a permanent marker consisting of CAST IRON MONUMENT

which reference or witness monuments are located in the manner following:



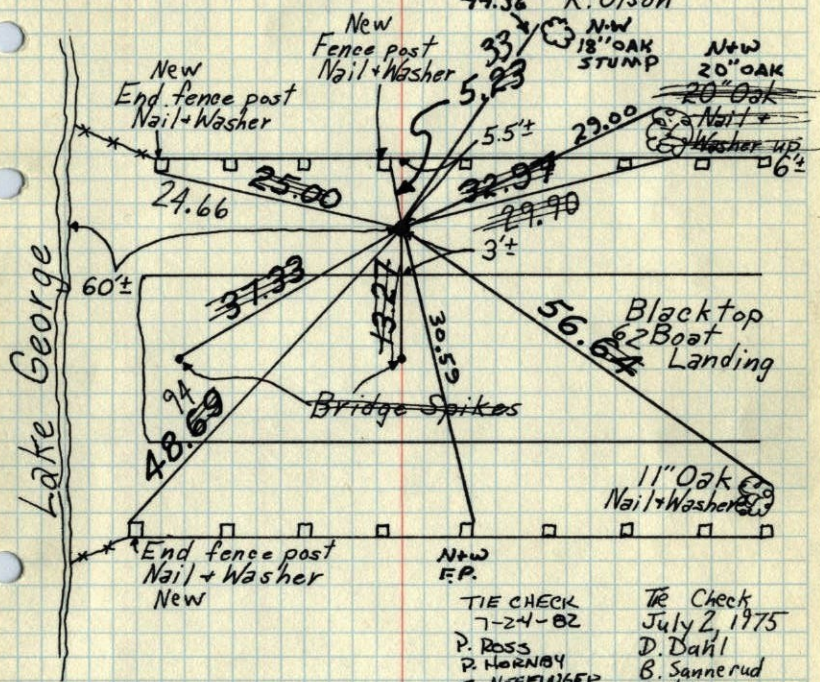
Revised date	Revised date	Revised date
7-22-87		
7-		
7-9-92		
6-10-97		
5-14-01		



M.C. on So. line of SW $\frac{1}{4}$ of Sec. 10-T33-R24

Replaced Iron Pipe with Cast Iron Monument
down 0.3'±

June 27, 1968

D. Powell
P. Pieh
R. Olson

TIE CHECK
7-24-82
P. ROSS
P. HORNBY
G. NEFFINGER

TIE CHECK
8-14-84
G. LIPS
D. ROSS
D. YOGEL

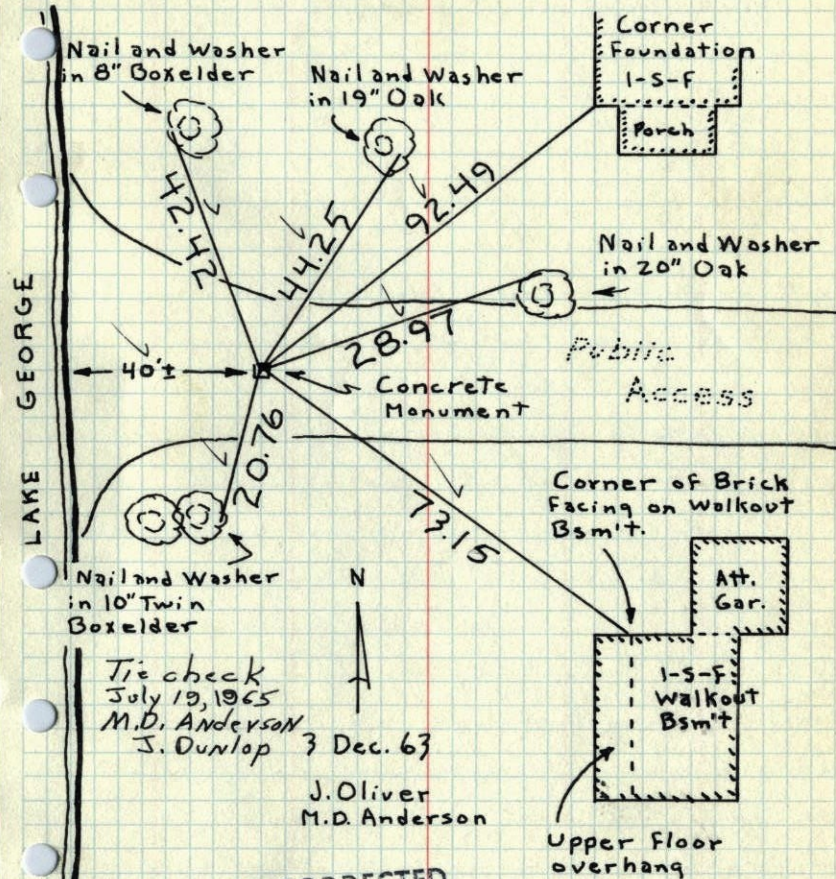
TIE CHECK
July 2, 1975
D. Dahl
B. Sannerud
G. Adams

TIE CHECK
7-5-78
O. DAHL
B. STEPHENS
M. KISROW

TEMPERATURE CORRECTED AND HORIZONTALLY TAPED MEASUREMENTS
ROLAND W. ANDERSON
COUNTY SURVEYOR
ANOKA COUNTY, MINNESOTA

M.C. on So. line of SW $\frac{1}{4}$ of Sec. 10,
T33, R 24

Found 4" Sq. Concrete Monument down 1.7'.
Set I.P. on East side of Conc.



Tie check
July 19, 1965
M.D. Anderson
J. Dunlop 3 Dec. 63

J. Oliver
M.D. Anderson

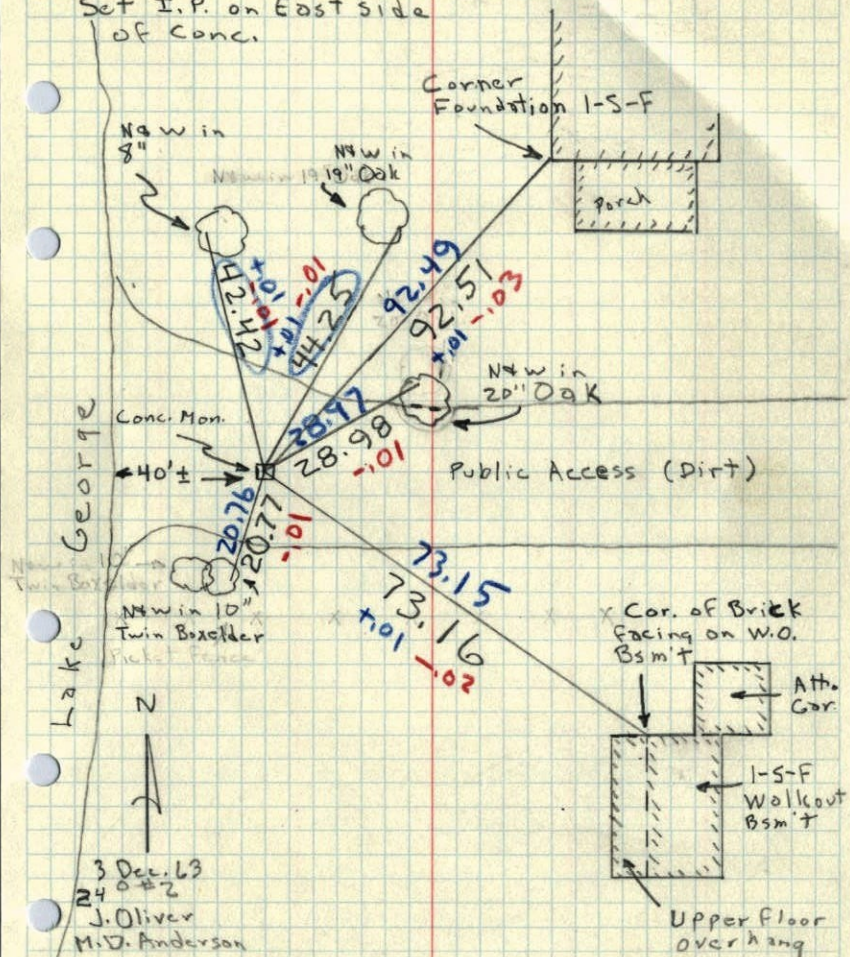
TEMPERATURE CORRECTED
AND HORIZONTALLY
TAPED MEASUREMENTS

ROLAND W. ANDERSON
COUNTY SURVEYOR
ANOKA COUNTY, MINNESOTA

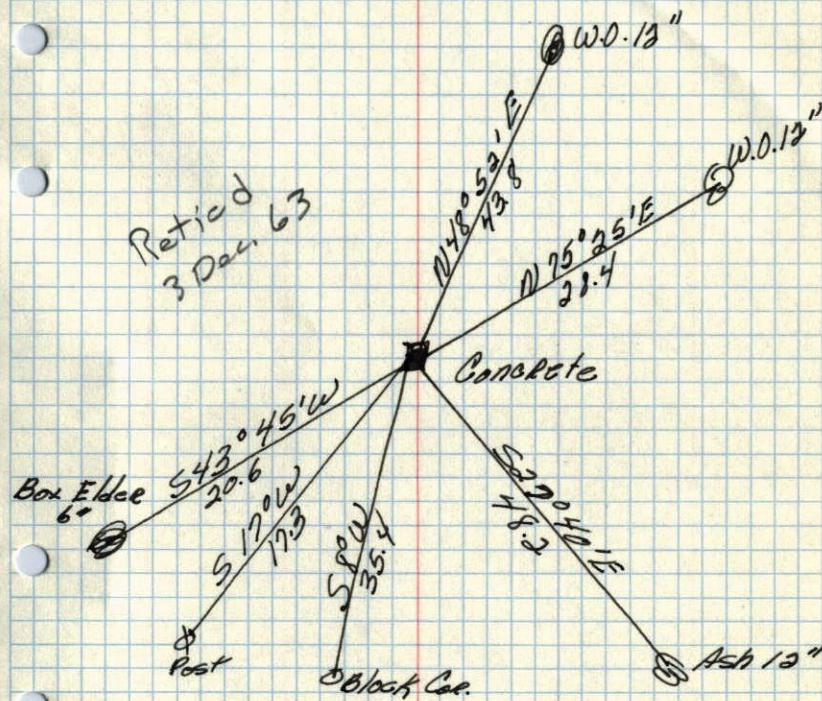
Meander Corner on So. line of SW¹/₄
of Sec. 10, T33, R24

Found 4" Sq. Concrete Monument down 1.7'

Set I.P. on East side
of Conc.



23 74 ✓
M.C. on S line of Sec. 10 T33, R24
Concrete Mon.



1945
Sept. 20, 1945
Cretwright