

CERTIFICATE OF LOCATION OF GOVERNMENT CORNER

County of Anoka

State of Minnesota

Witness Corner of Sec. 16 Township 33 Range 24

(witness to northeast corner on east line of section)

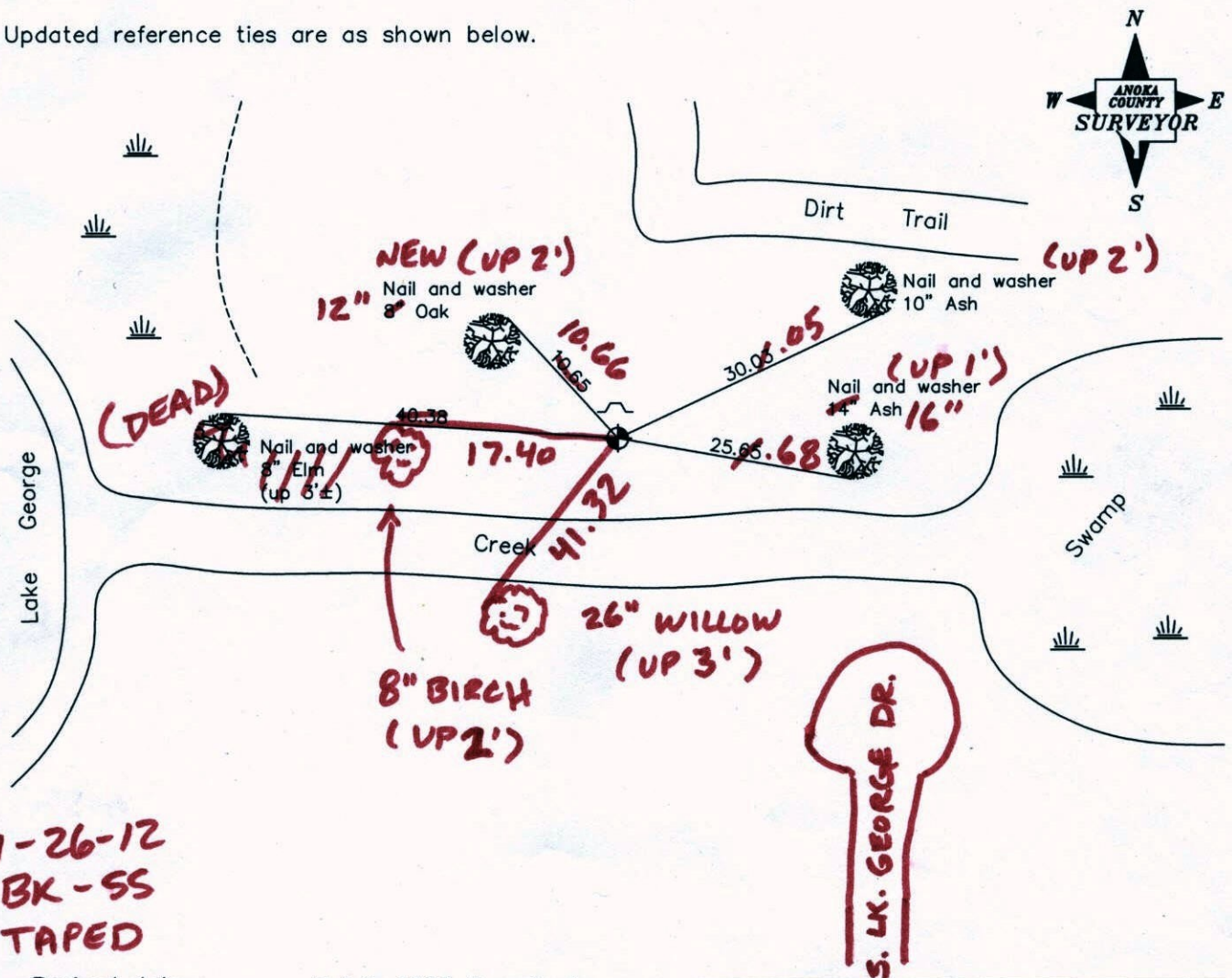
On the 29th day of October, 1965, the described corner was evidenced by area resurvey

and to perpetuate the location of said corner, at the exact location thereof, a permanent marker was placed consisting of a cast iron monument with a sign and post on the north side

(MON. DOWN 1' ±)

AND on the ___ day of _____, _____, said permanent marker was _____

Updated reference ties are as shown below.



1-26-12
BK-SS
TAPED

Revised date
6/10/97
5/14/01

N.A.D. 1983 Coordinates (1996 Adjustment)	
County Project Coordinates	
Northing	215426.2458
Easting	484437.7581
Date	5/14/01

I hereby certify that this United States public land survey monument record is correct and complete to the best of my knowledge and belief.

Date _____

_____, Anoka County Surveyor

Minnesota License Number _____

CERTIFICATE OF LOCATION OF GOVERNMENT CORNER

County of Anoka

State of Minnesota

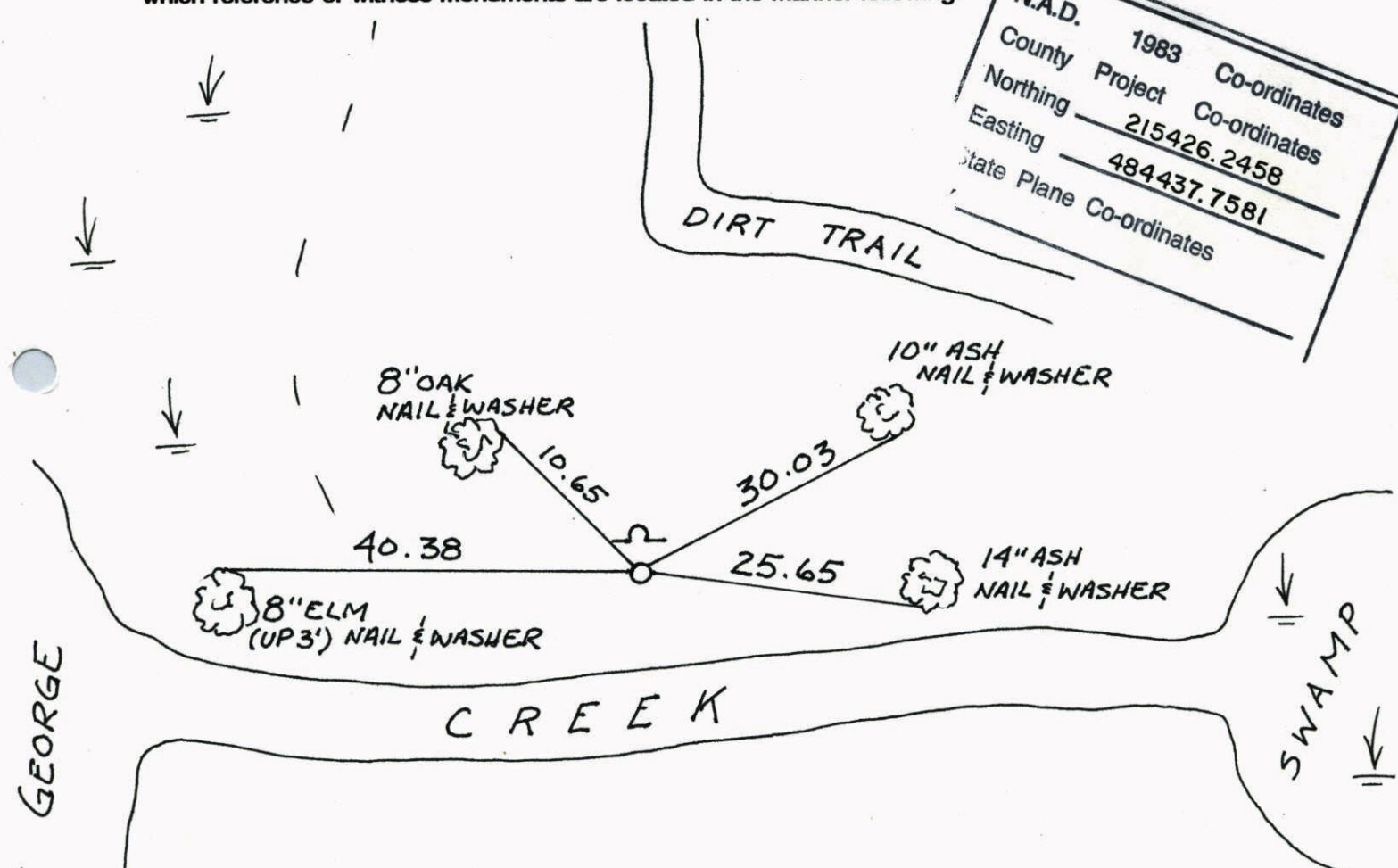
WITNESS TO NORTH EAST
COR. ON EAST LINE Corner of Sec. 16 Township 33 Range 24

I hereby certify that on the 29 day of OCT., 1965, I found the described corner which was evidenced by AREA RESURVEY

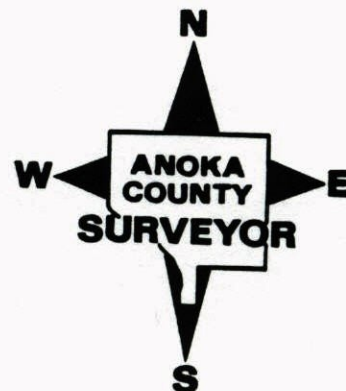
and I further certify that to perpetuate the location of said corner, I did, at the exact location thereof, place a permanent marker consisting of CAST IRON MON. W. SIGN AND POST ON NORTH SIDE

which reference or witness monuments are located in the manner following:

N.A.D. 1983 Co-ordinates
 County Project Co-ordinates
 Northing 215426.2458
 Easting 484437.7581
 State Plane Co-ordinates

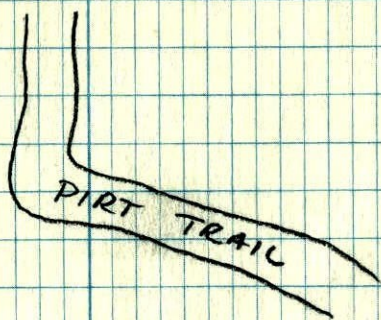


Revised date	Revised date	Revised date
6-10-97		
5-14-01		

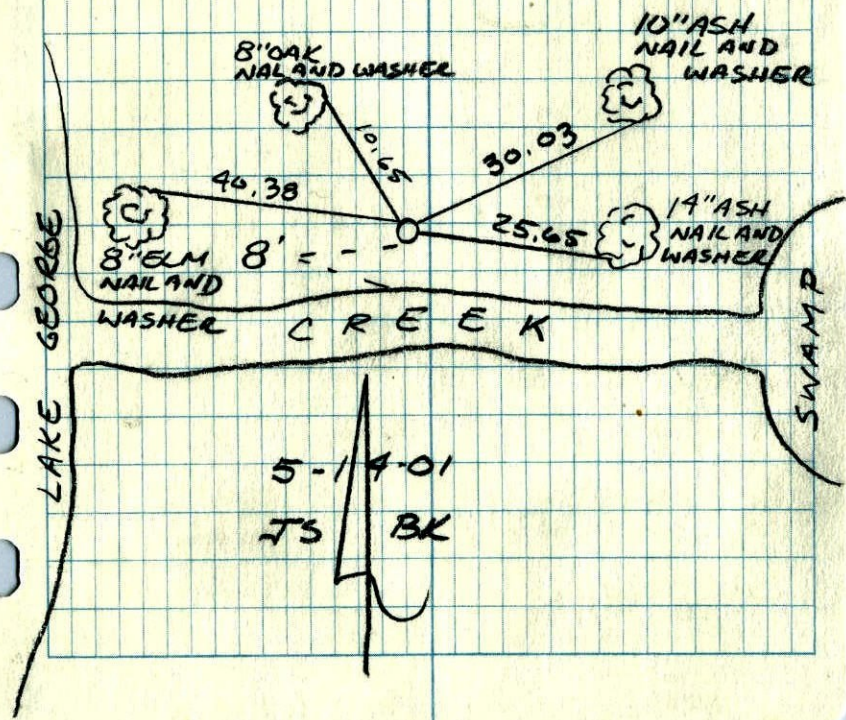


WITNESS TO
NORTHEAST COR. SEC 16 T33 R24
ON EAST LINE

RETIED, GPS'D C.I.M.



DIRT TRAIL



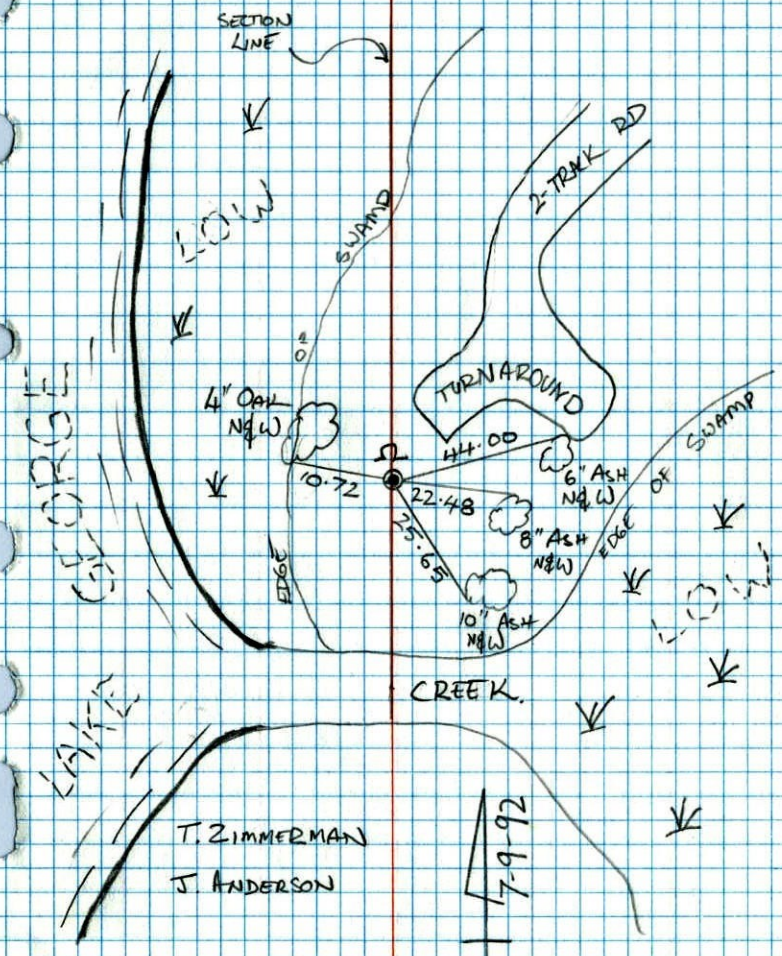
5-14-01
JS BK

WITNESS TO NORTHEAST
CORNER ON

RETIE EAST LINE SEC 16 T33 R 24

CAST IRON MONUMENT
W/ SIGN & POST ON NTH SIDE

NO. 448
TELEPHONE



T. ZIMMERMAN
J. ANDERSON

7-9-92

Witness Cor. on E. line Sec. 16, T33, R24

Set Cast Iron Monument from Resurvey.

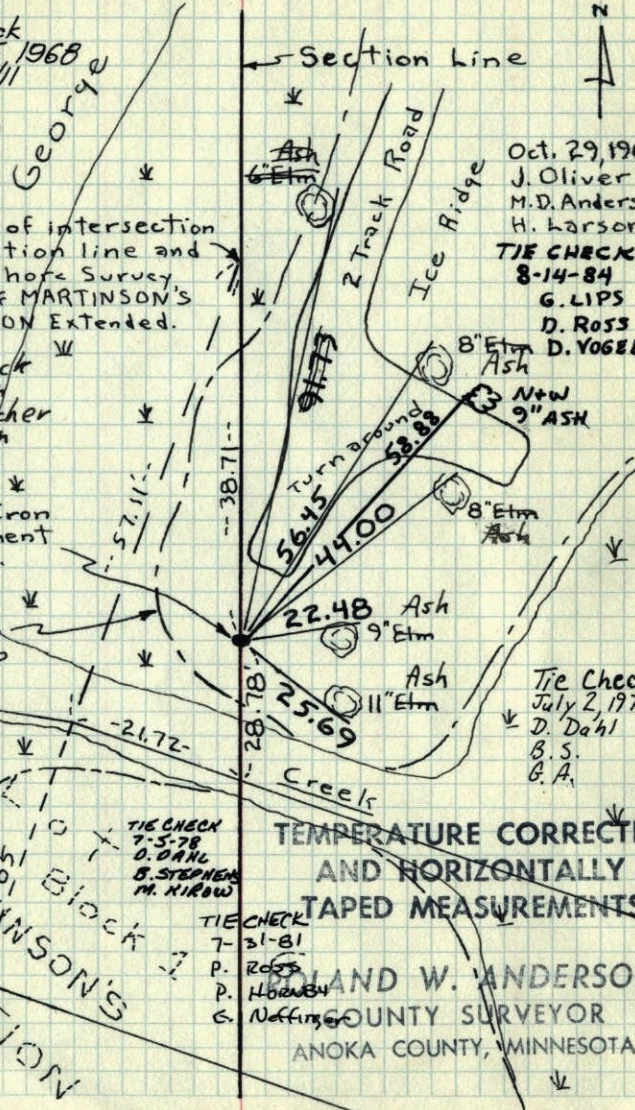
Down 0.5'

Nails and washers in all tie trees.

Tie Check

June 25, 1968

D. Powell
P. Pich
R. Olson



Point of intersection of Section line and lake shore Survey line of MARTINSON'S ADDITION Extended.

Tie Check

R. Brieh
J. Boettcher
B. Olson

Cast Iron Monument Flush.

Edge of Swamp

TEMPERATURE CORRECTED AND HORIZONTALLY TAPED MEASUREMENTS

ROLAND W. ANDERSON
COUNTY SURVEYOR
ANOKA COUNTY, MINNESOTA

Witness Cor. on E. line Sec. 16, T33, R24

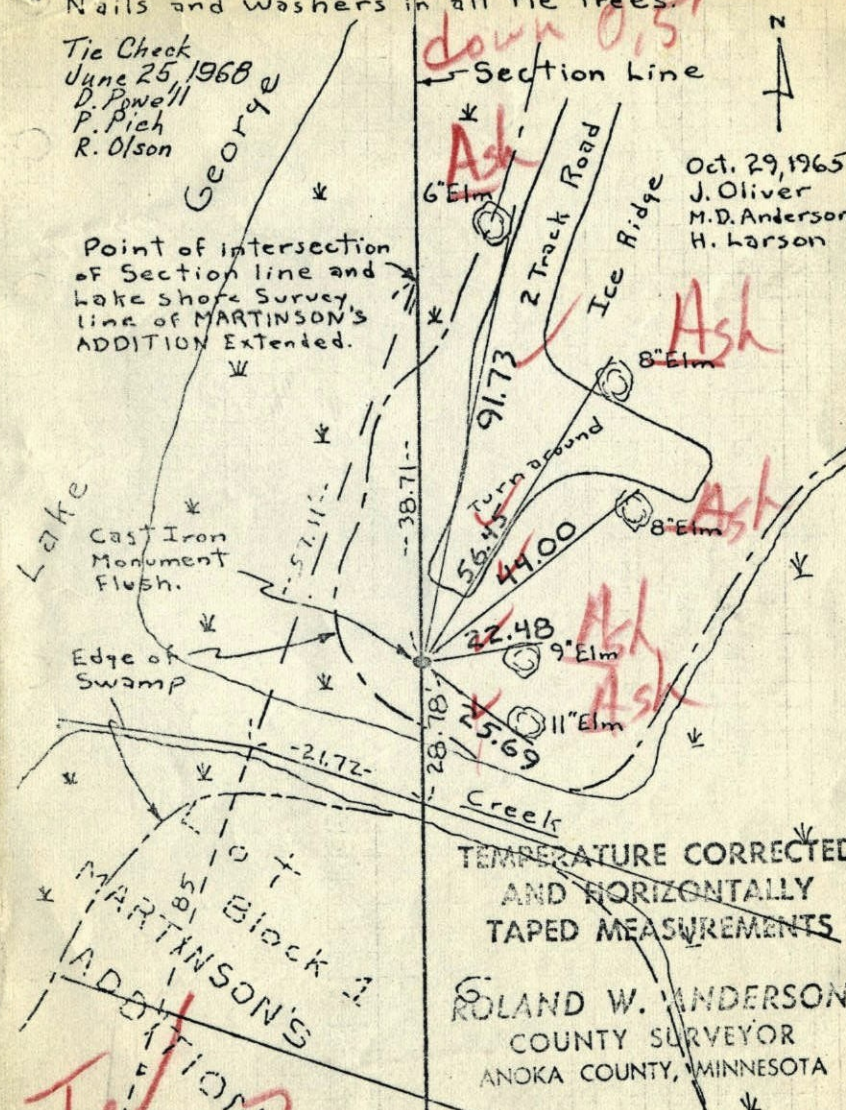
Set Cast Iron Monument from Resurvey.

Nails and washers in all tie trees.

Tie Check

June 25, 1968

D. Powell
P. Pich
R. Olson



Point of intersection of Section line and lake shore Survey line of MARTINSON'S ADDITION Extended.

Cast Iron Monument Flush.

Edge of Swamp

TEMPERATURE CORRECTED AND HORIZONTALLY TAPED MEASUREMENTS

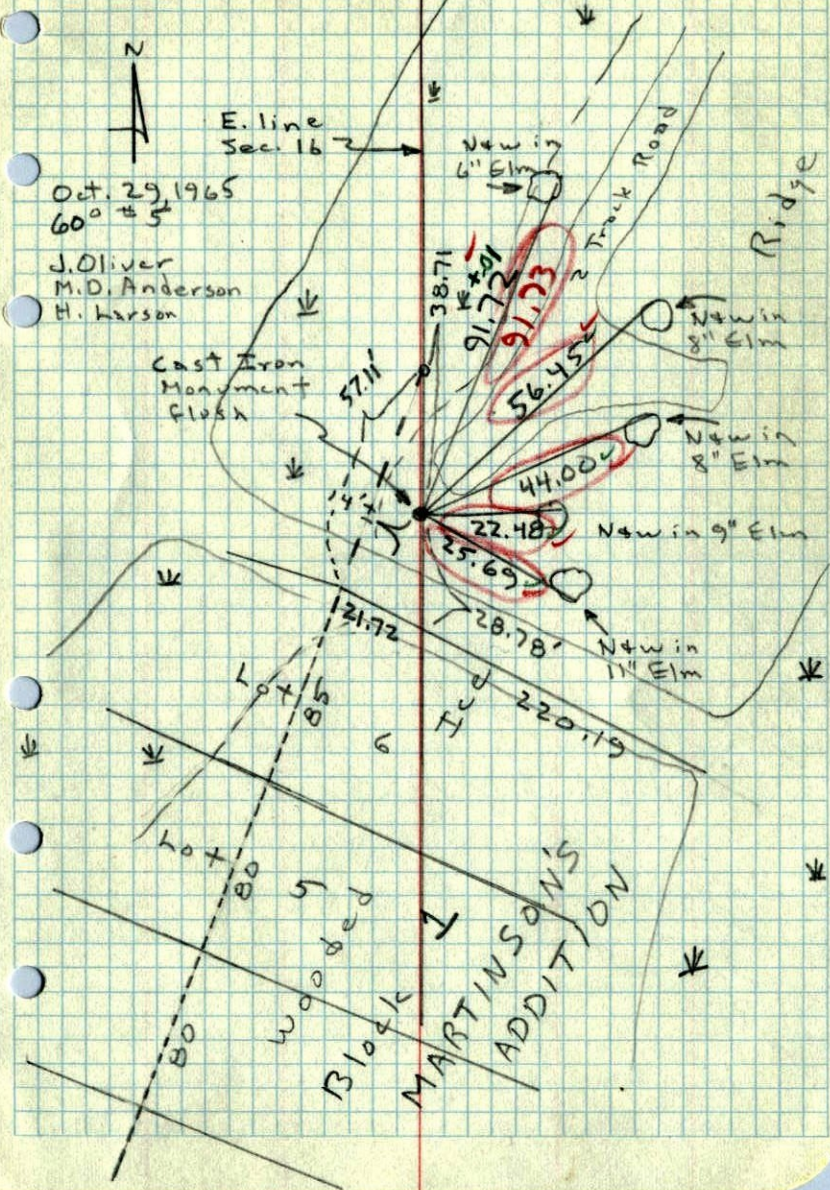
ROLAND W. ANDERSON
COUNTY SURVEYOR
ANOKA COUNTY, MINNESOTA

Tie Check July 2, 1975
R. Brieh
J. Boettcher
B. Olson

Revised

Witness Corner on E. line Sec. 16, T33, R24

Set Cast Iron Monument from Resurvey

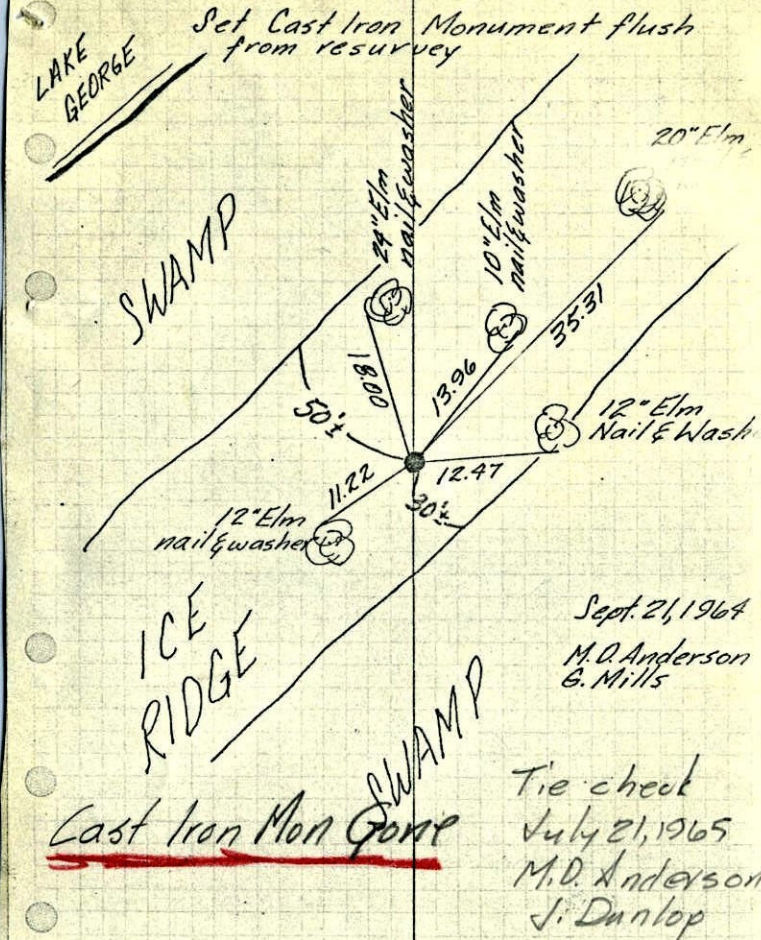


32

Witness Cor. on E. line Sec. 16-T33-R24

on South side Lake George

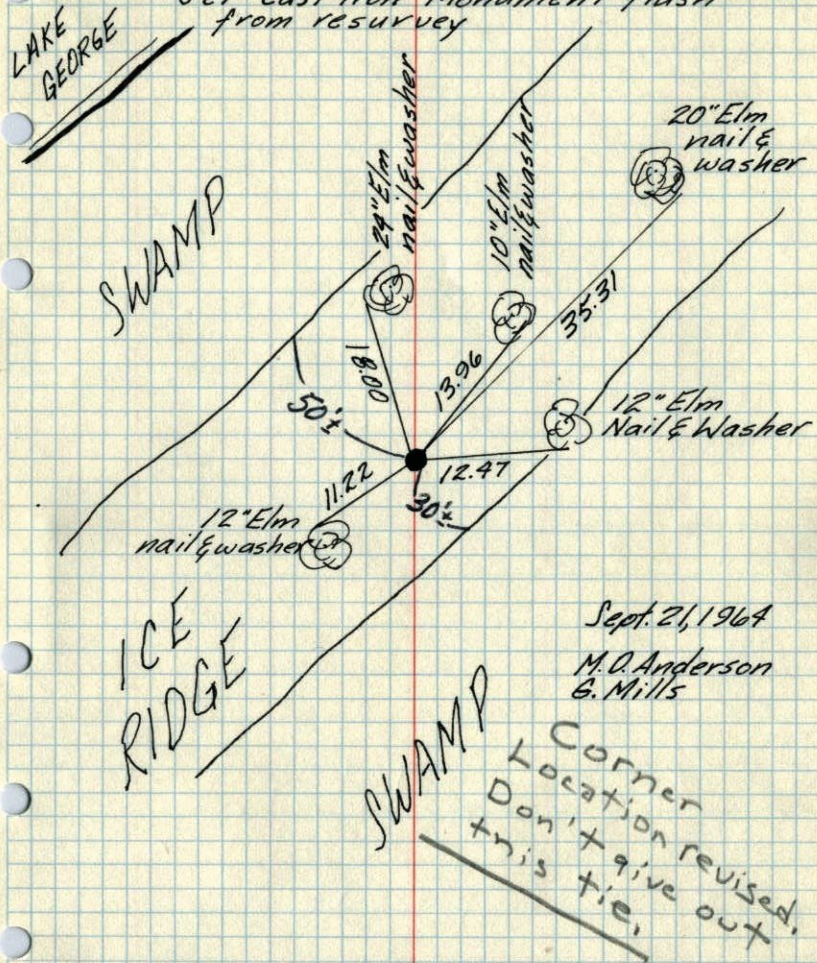
Set Cast Iron Monument flush from resurvey



TEMPERATURE CORRECTED ROLAND W. ANDERSON
AND HORIZONTALLY COUNTY SURVEYOR
TAPED MEASUREMENTS ANOKA COUNTY, MINNESOTA

Witness Cor. on E. line Sec. 16-T33-R24
on South side Lake George

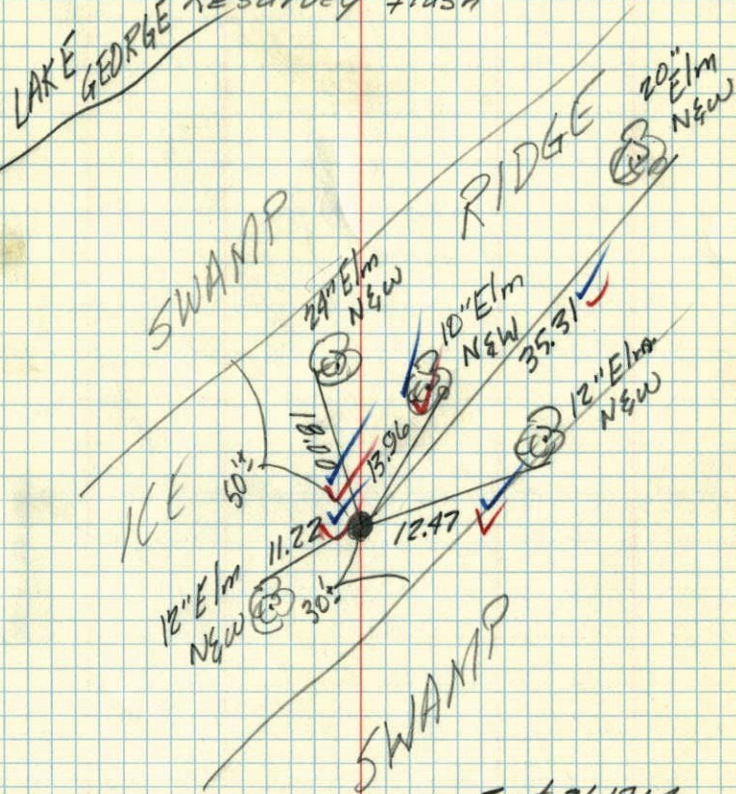
Set Cast Iron Monument flush
from resurvey



TEMPERATURE CORRECTED ROLAND W. ANDERSON
AND HORIZONTALLY COUNTY SURVEYOR
TAPED MEASUREMENTS ANOKA COUNTY, MINNESOTA

Witness Cor. on E. line Sec. 16-T33-R24
on South side Lake George R 24

Set Cast Iron Monument from
Resurvey flush



Sept. 21, 1964
M. P. Anderson
G. Mills
Temp. 68°
Tape 1