

CERTIFICATE OF LOCATION OF GOVERNMENT CORNER

County of Anoka

State of Minnesota

Southwest Corner of Sec. 8 Township 33 Range 24

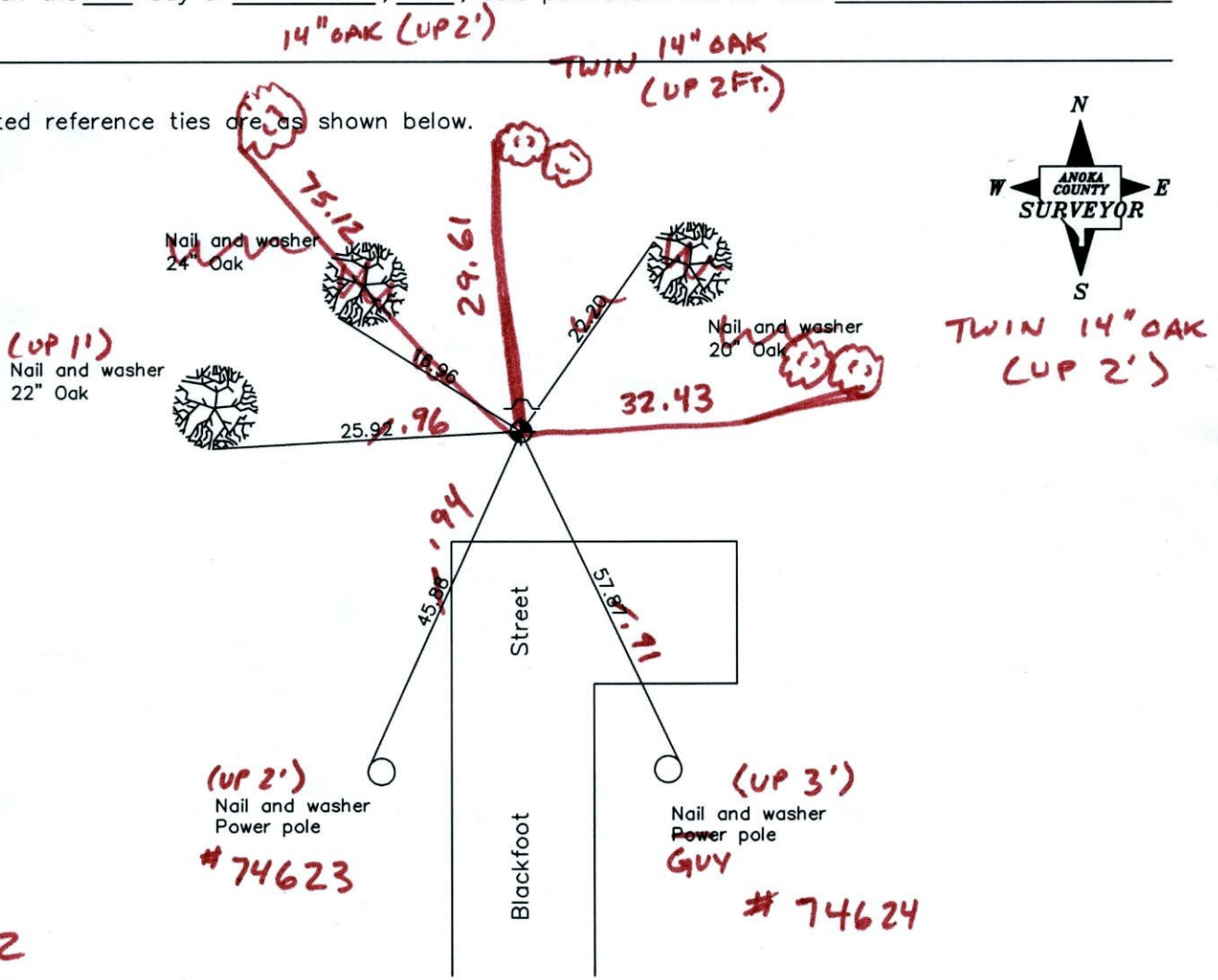
On the 19th day of June, 1961, the described corner was evidenced by a concrete monument

and to perpetuate the location of said corner, at the exact location thereof, a permanent marker was placed consisting of a cast iron monument with a sign and post on the north side

(MON. DOWN 0.5' ±)

AND on the ___ day of _____, _____, said permanent marker was _____

Updated reference ties are as shown below.



1-17-12
BK-SS
T/T - VRS

Revised date

4/04/95
6/17/97
4/30/01

N.A.D. 1983 Coordinates
(1996 Adjustment)

County Project Coordinates	
Northing	<u>217123.5989</u>
Easting	<u>473905.3598</u>
Date	<u>3/30/01</u>

I hereby certify that this United States public land survey monument record is correct and complete to the best of my knowledge and belief.

_____, Anoka County Surveyor
Minnesota License Number _____

VRS 3D = 0.07 N = 217123.6122 E = 473905.3406

CERTIFICATE OF LOCATION OF GOVERNMENT CORNER

County of Anoka

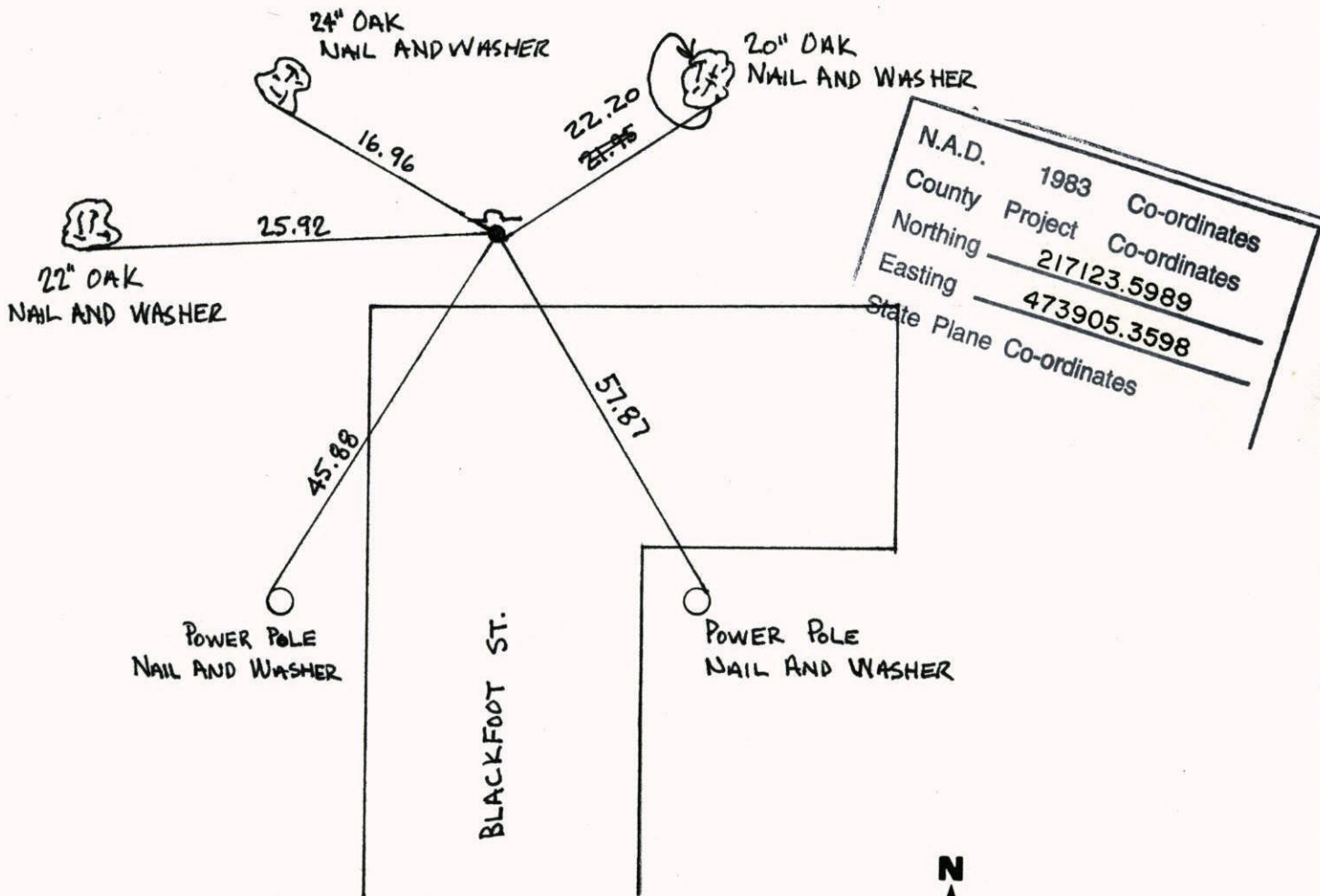
State of Minnesota

SOUTHWEST Corner of Sec. 8 Township 33 Range 24

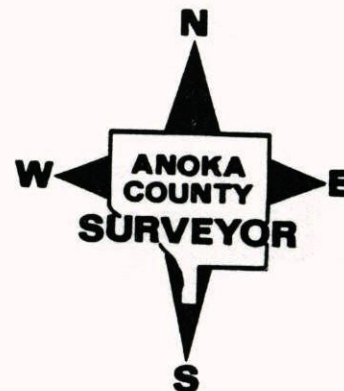
I hereby certify that on the 19TH day of JUNE, 19 61, I found the described corner which was evidenced by CONCRETE MONUMENT

and I further certify that to perpetuate the location of said corner, I did, at the exact location thereof, place a permanent marker consisting of CAST IRON MONUMENT
SIGN AND POST ON NORTH SIDE

† which reference or witness monuments are located in the manner following:

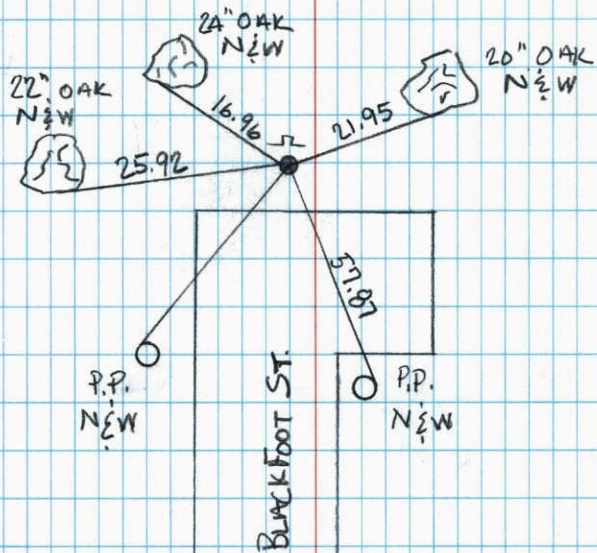


Revised date	Revised date	Revised date
7-24-87		
7-7-92		
4-4-95 HL		
6-17-97		
4-30-01		



SOUTHWEST COR. SEC. 8, T. 33, R. 24

REPLACED BROKEN MONUMENT



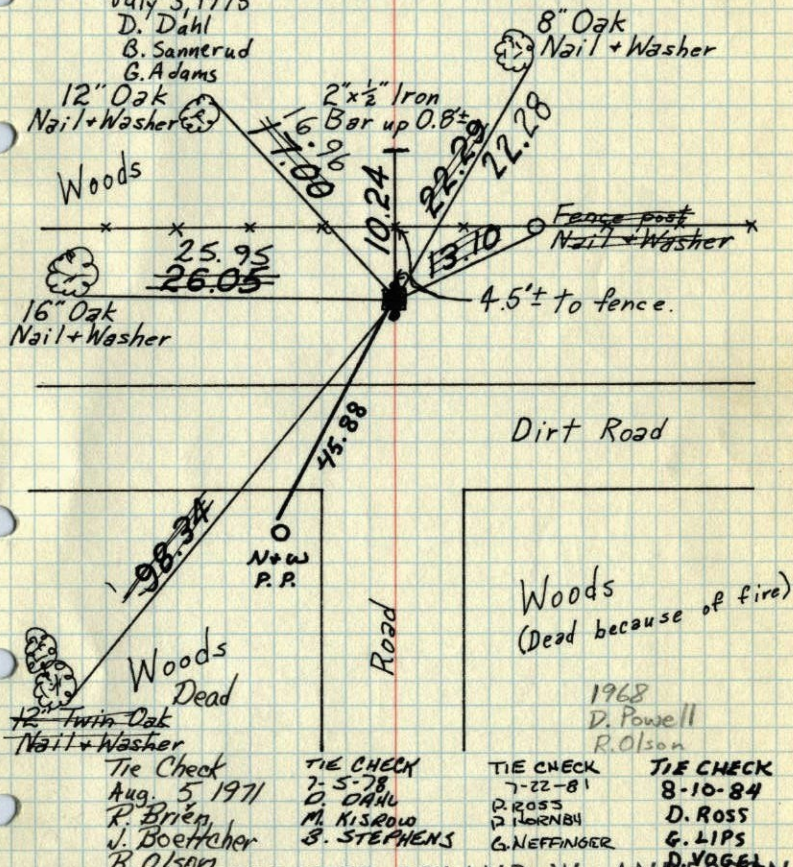
8-2-99
J. SIMMER
T. SCHWAB



SW Cor. Sec. 8-T33-R24

Concrete Monument down 0.3±. 1/2" Iron Rod with cap on North Side. 1" Iron Pipe on South Side. Both irons flush with ground. Found by Anoka Co. Surveyor June 19, 1961. Replaced Con. Mon. with Cast Iron Mon. flush.

July 3, 1975
D. Dahl
B. Sannerud
G. Adams



1968
D. Powell
R. Olson

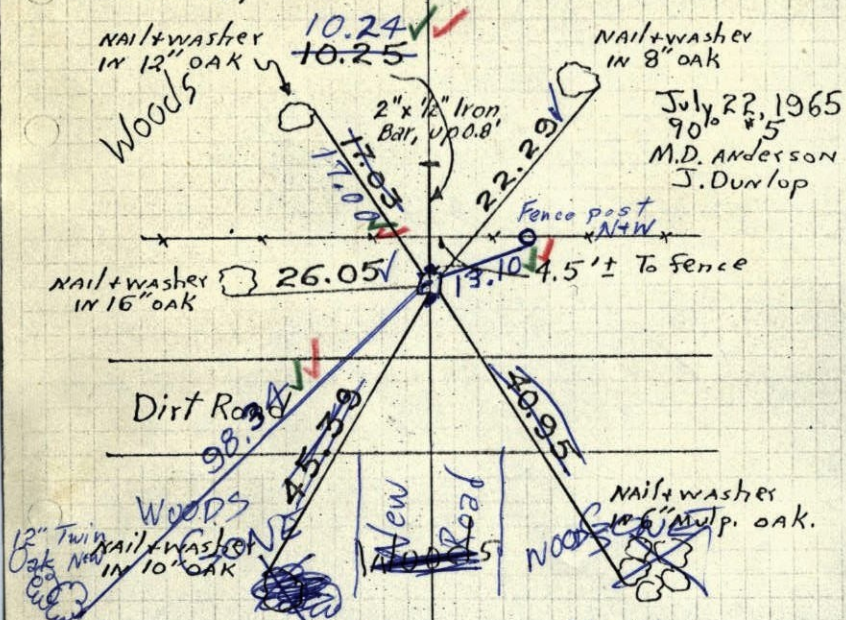
TIE CHECK 7-5-78 D. DAHL M. KISROW S. STEPHENS	TIE CHECK 7-22-81 P. ROSS P. HORNBY G. NEFFINGER	TIE CHECK 8-10-84 D. ROSS G. LIPS D. VOGEL
--	--	--

TEMPERATURE CORRECTED ROLAND W. ANDERSON
AND HORIZONTALLY
TAPED MEASUREMENTS
COUNTY SURVEYOR
ANOKA COUNTY, MINNESOTA

NATIONAL PRINTFAST NO. 446

S.W. Cor. Sec. 8 T33 R24

Found conc. monument down $0.5' \pm$
 IRON PIPE ON N.E. + IRON PIPE ON S.
 both Flush with conc. Found from
 remaining ties by A.C. surveyor of
 June 19, 1961.



$\frac{1}{2}$ " Iron rod with cap on N. side
 1" Iron pipe on S. side. Both flush
 with ground.

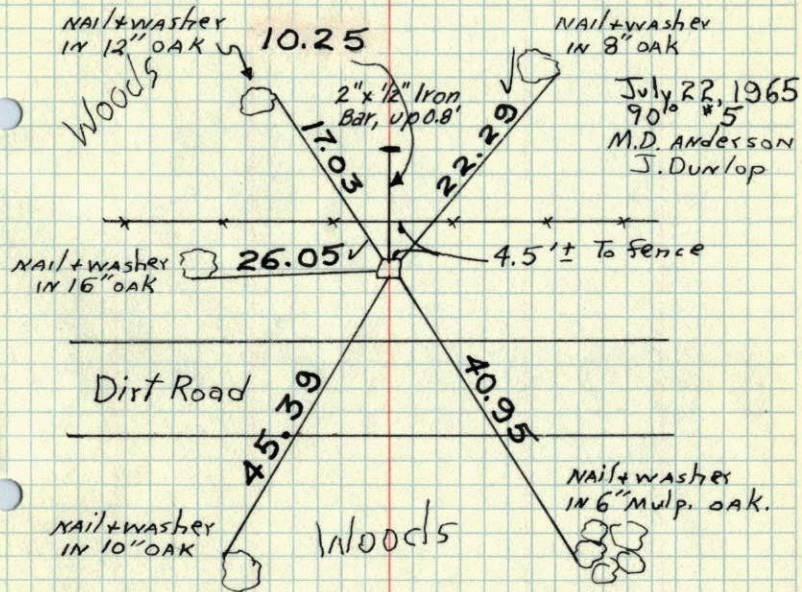
6/24/68
 #7-65
 D. Powell
 P. Pich
 R. Olson

TEMPERATURE CORRECTED
 AND HORIZONTALLY
 TAPED MEASUREMENTS

ROLAND W. ANDERSON
 COUNTY SURVEYOR
 ANOKA COUNTY, MINNESOTA

S.W. Cor. Sec. 8 T33 R24

Found conc. monument down $0.5' \pm$
 IRON PIPE ON N.E. + IRON PIPE ON S.
 both Flush with conc. Found from
 remaining ties by A.C. surveyor of
 June 19, 1961.



TEMPERATURE CORRECTED
 AND HORIZONTALLY
 TAPED MEASUREMENTS

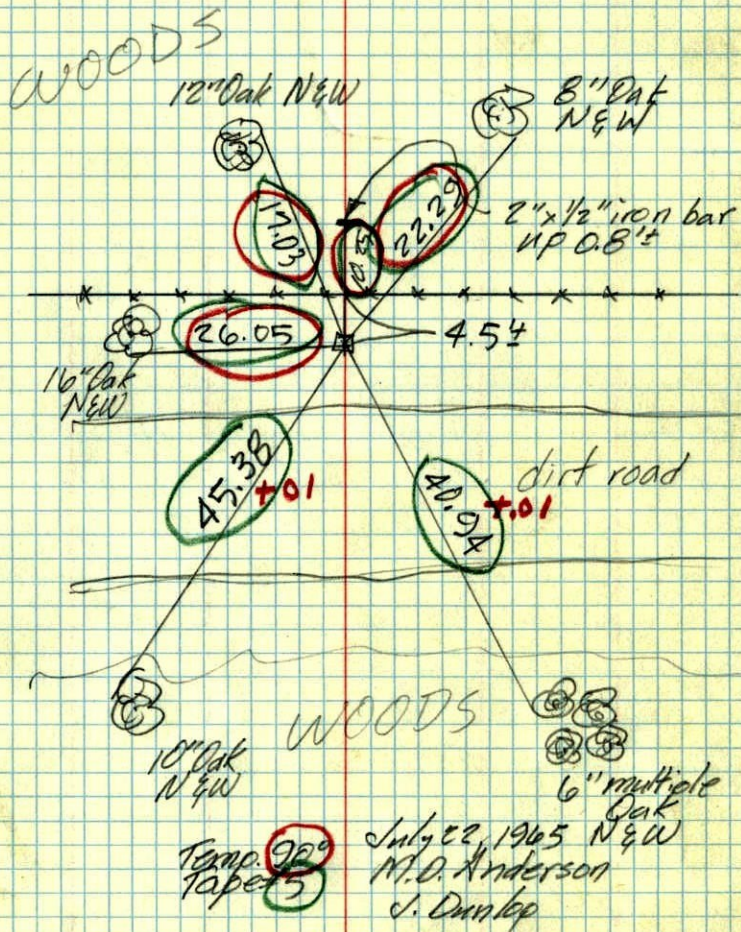
ROLAND W. ANDERSON
 COUNTY SURVEYOR
 ANOKA COUNTY, MINNESOTA

S.W. Cor. Sec. 8-33-R24

found Conc. Mon down 0.5'

Iron pipe on N & iron bar on S.
both flush with conc.

found from remaining ties by
Anoka County Surveyor of June 19, 1961



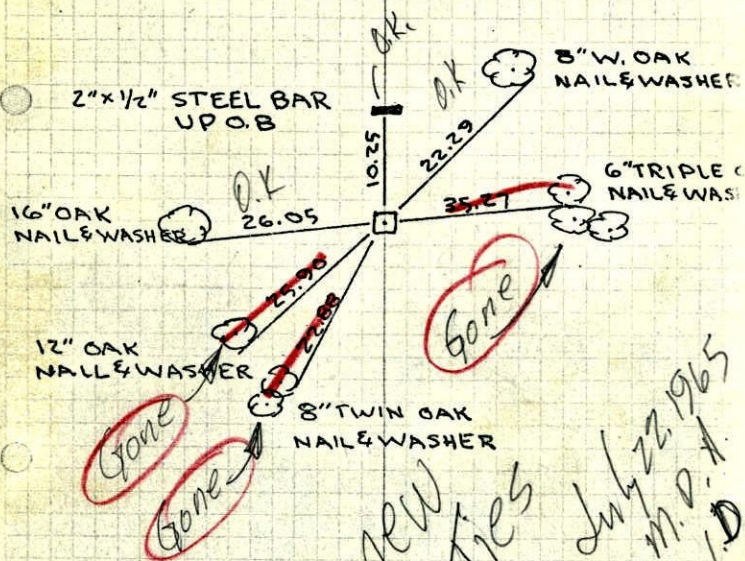
26

S.W. Cor. Sec. 8-33-24

FOUND CONC. MON DOWN 0.5'
IRON PIPE ON N & IRON BAR ON S.
BOTH FLUSH WITH CONC.

JUNE 19, 1961

R.O. FREEMAN
M.D. ANDERSON



Took new ties July 22, 1965
M.D. Anderson
J.D.

ROLAND W. ANDERSON
COUNTY SURVEYOR
ANOKA COUNTY, MINNESOTA

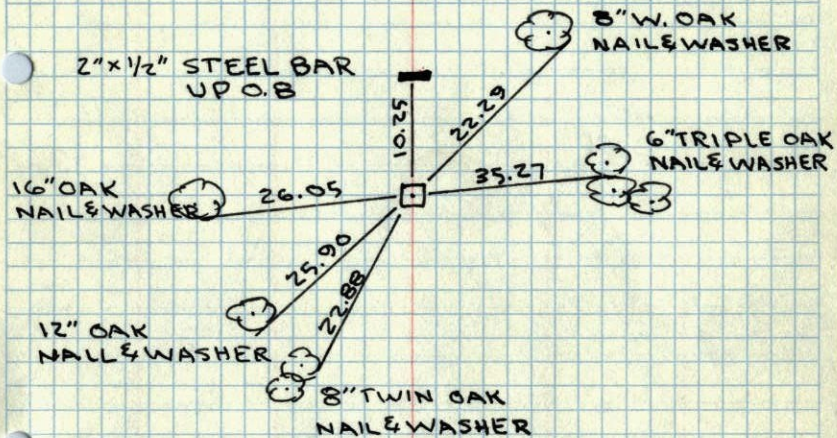
TEMPERATURE CORRECTED
AND HORIZONTALLY
TAPED MEASUREMENT

S.W. COR. SEC. 8-33-24

FOUND CONC. MON DOWN 0.5'
IRON PIPE ON NE IRON BAR ON S.
BOTH FLUSH WITH CONC.

JUNE 19, 1961

R.O. FREEMAN
M.D. ANDERSON



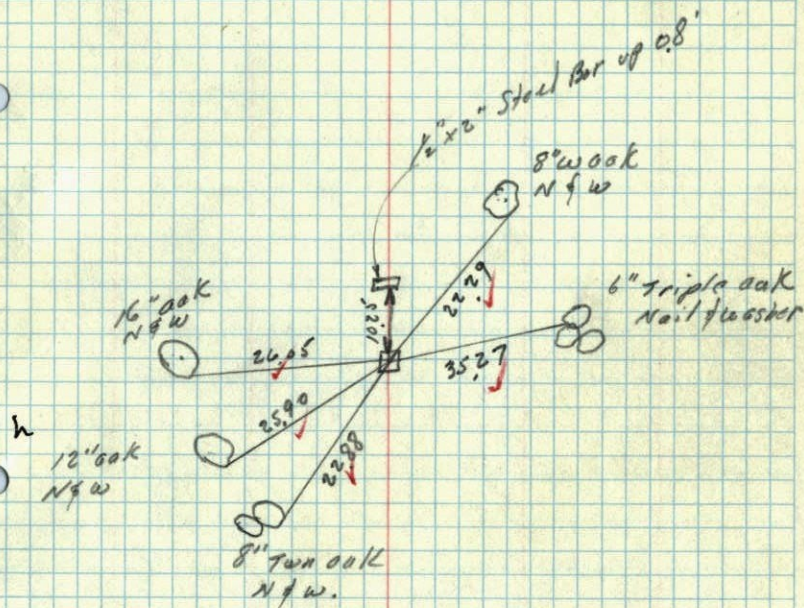
ROLAND W. ANDERSON
COUNTY SURVEYOR
ANOKA COUNTY, MINNESOTA

TEMPERATURE CORRECTED
AND HORIZONTALLY
TAPED MEASUREMENTS

19 June 1961
Freeman Anderson
+ 75°

SW Cor Sec 8-33-24 Oak Grove

Found Conc. Mon down 0.5' w 1" iron
Flush on So face of 30 Solid iron
Bar on N. face.



TEMP CORR.
00455 + 75°