

CERTIFICATE OF LOCATION OF GOVERNMENT CORNER

County of Anoka

State of Minnesota

East 1/4 Corner of Sec. 16 Township 33 Range 24

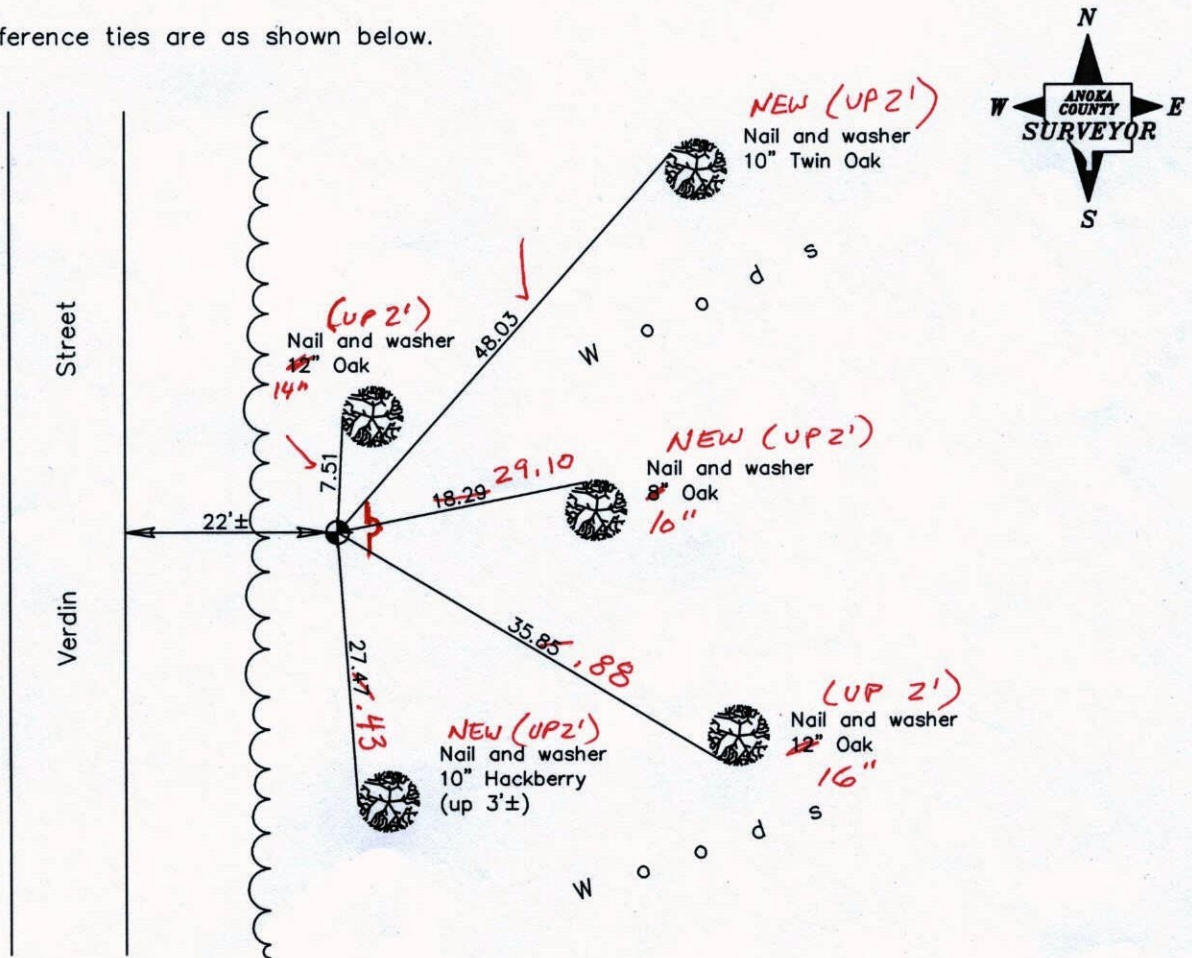
On the 29th day of October, 1965, the described corner was evidenced by area resurvey

and to perpetuate the location of said corner, at the exact location thereof, a permanent marker was placed consisting of a cast iron monument ✓

(COULD USE SIGN & POST)
ADDED SIGN & POST FACING WEST (4/6/12)

AND on the ___ day of _____, _____, said permanent marker was _____

Updated reference ties are as shown below.



11/10/11
BK-SS
TAPED

Revised date

7/09/92
6/26/97
5/15/01

N.A.D. 1983 Coordinates
(1996 Adjustment)

County Project Coordinates	
Northing	<u>214230.9194</u>
Easting	<u>484442.6795</u>
Date	<u>5/15/01</u>

I hereby certify that this United States public land survey monument record is correct and complete to the best of my knowledge and belief.

_____, Anoka County Surveyor
Minnesota License Number _____

VRS 3D = 0.10

N = 241231.0031

E = 484442.6366

CERTIFICATE OF LOCATION OF GOVERNMENT CORNER

County of Anoka

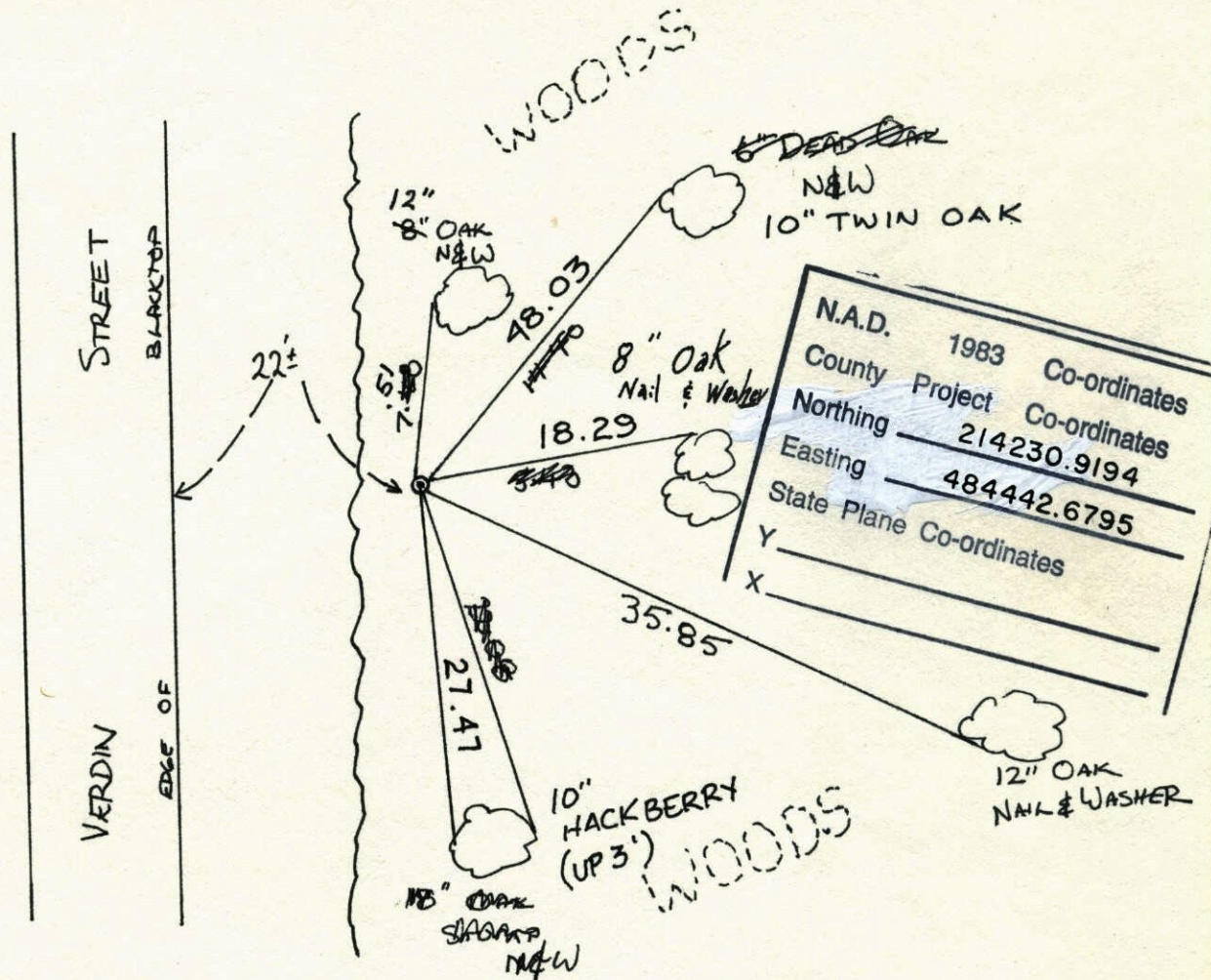
State of Minnesota

EAST QUARTER Corner of Sec. 16 Township 33 Range 24

I hereby certify that on the 29 day of OCTOBER, 1965, I found the described corner which was evidenced by AREA RESURVEY

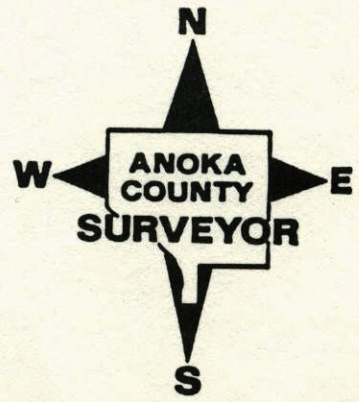
and I further certify that to perpetuate the location of said corner, I did, at the exact location thereof, place a permanent marker consisting of CAST IRON MONUMENT

which reference or witness monuments are located in the manner following:



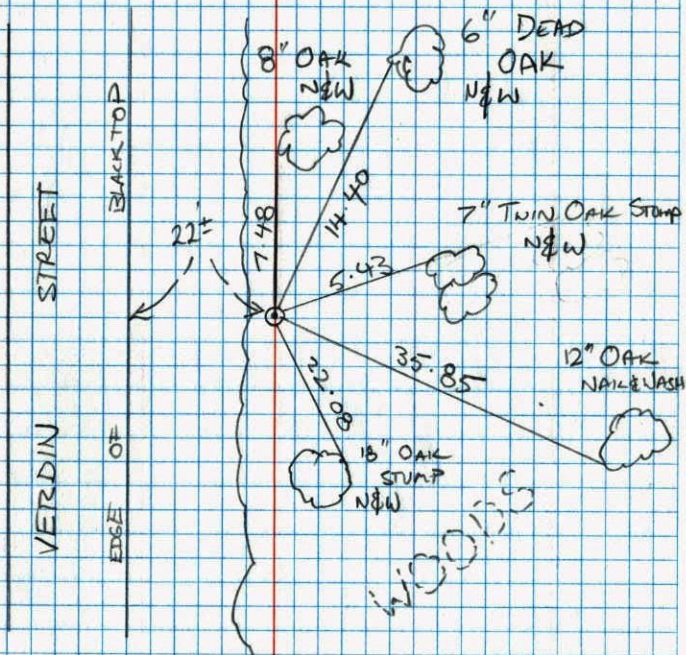
N.A.D.	1983	Co-ordinates
County	Project	Co-ordinates
Northing	214230.9194	
Easting	484442.6795	
State Plane Co-ordinates	Y	X

Revised date	Revised date	Revised date
7-3-73		
7-30-87		
7-9-92		
6-26-97		
5-15-01		



REITE EAST 1/4 SEC 16 T 33 R 24

CAST IRON MONUMENT



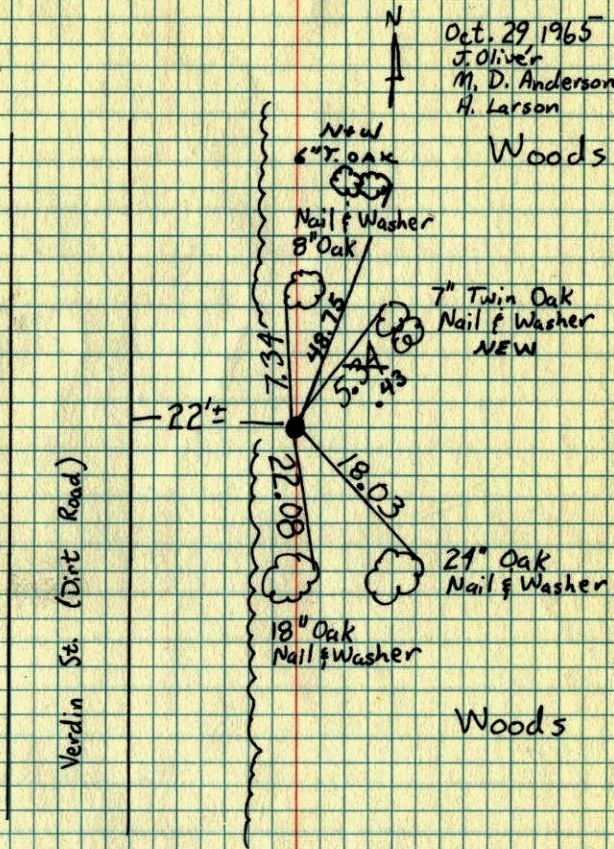
T. ZIMMERMANN
J. ANDERSON



E 1/4 Cor. Sec. 16 T 33, R 24

Revised Cast Iron Monument at
Revised position from resurvey adjustment

Oct. 29, 1965
J. Oliver
M. D. Anderson
H. Larson

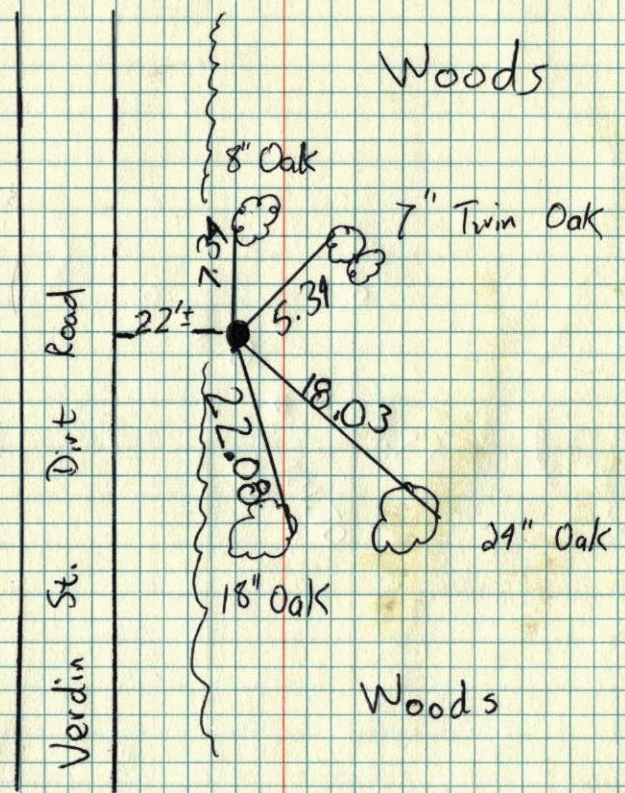


TIE CHECK	TIE CHECK	TIE CHECK	Tie Check
7-5-78	7-24-81	8-14-84	July 3, 1975
D. DAHL	P. ROSS	G. LIPS	D. Dahl
M. HIRSH	P. HORNBY	D. ROSS	G. Sannerud
B. STEPHENS	G. NEFFINGER	D. VOGEL	G. Adams
			89°
			tape #10

TEMPERATURE CORRECTED ROLAND W. ANDERSON
AND HORIZONTALLY COUNTY SURVEYOR
TAPED MEASUREMENTS ANOKA COUNTY, MINNESOTA

E 1/4 Cor Sec. 16 T33R24⁶⁵

Reset Cast Iron Monument at Revised position from resurvey



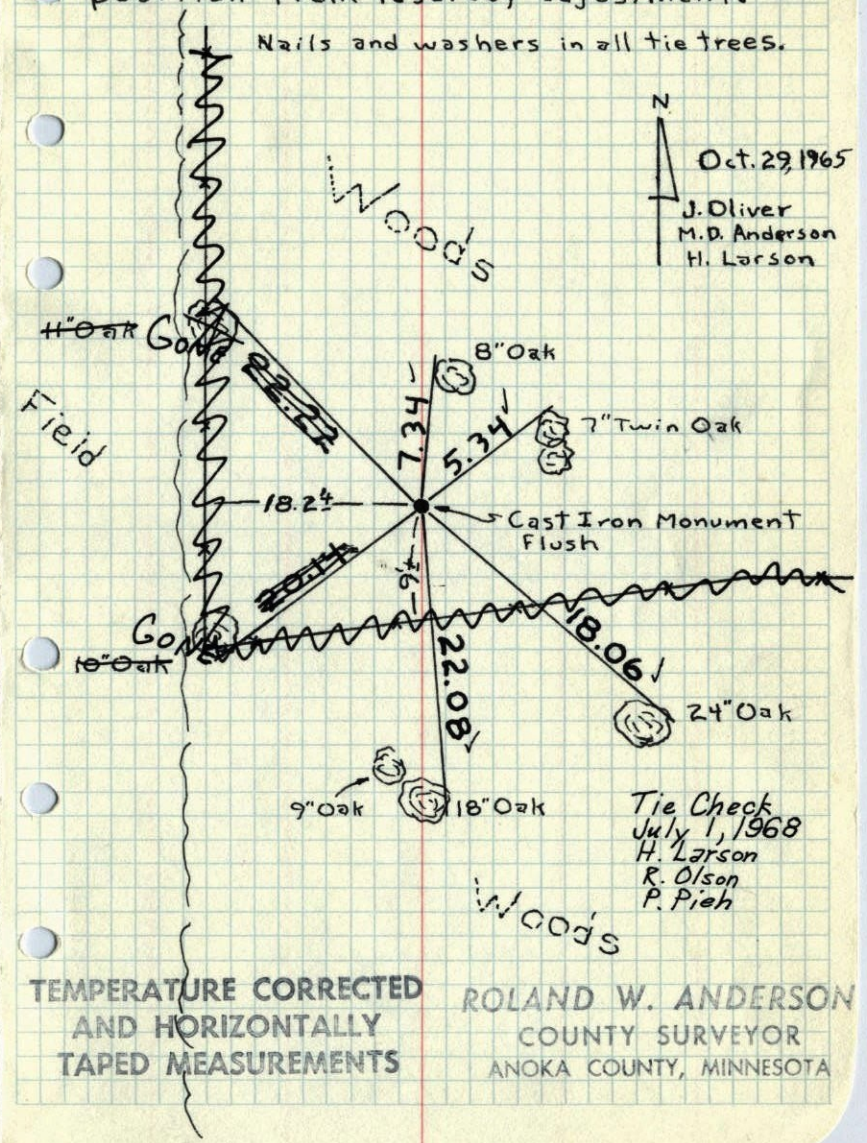
Tie Check
7-3-75
D. Daw
B. Sannerud
G. Adams
870
Tape #10

65

E 1/4 Cor. Sec. 16, T33, R24

Reset Cast Iron monument at revised position from resurvey adjustment.

Nails and washers in all tie trees.



N
Oct. 29, 1965
J. Oliver
M. D. Anderson
H. Larson

Tie Check
July 1, 1968
H. Larson
R. Olson
P. Pieh

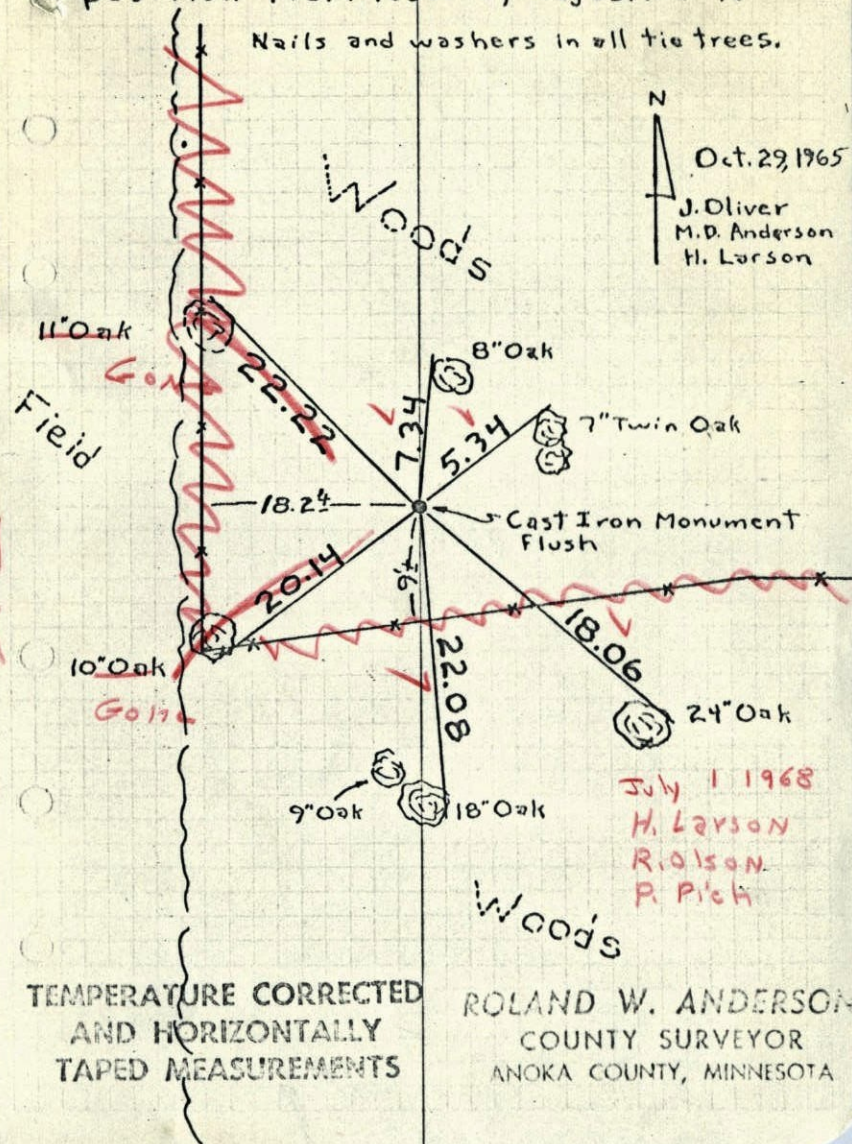
TEMPERATURE CORRECTED
AND HORIZONTALLY
TAPED MEASUREMENTS

ROLAND W. ANDERSON
COUNTY SURVEYOR
ANOKA COUNTY, MINNESOTA

E 1/4 Cor. Sec. 16, T33, R24

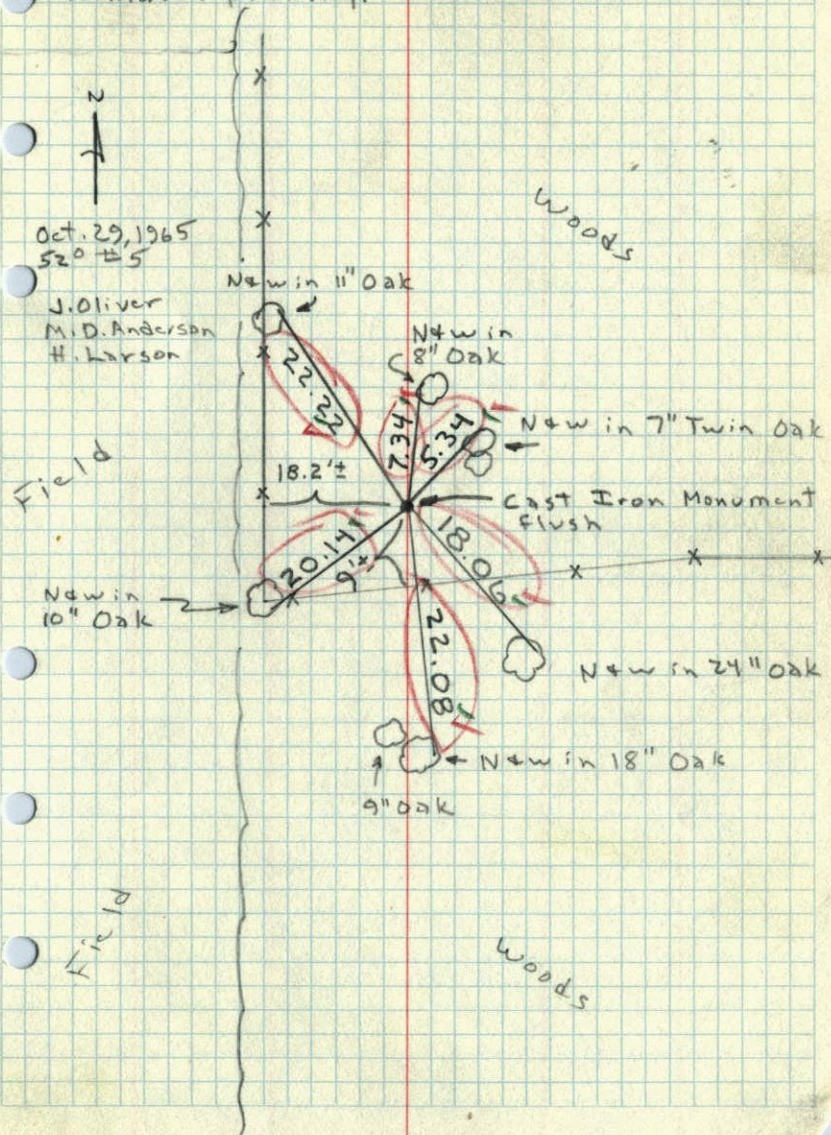
Reset Cast Iron monument at revised position from resurvey adjustment.

Nails and washers in all tie trees.



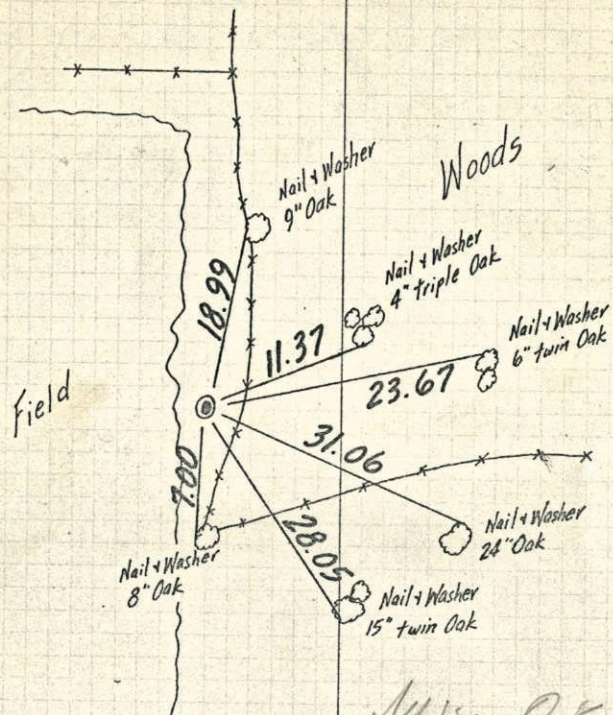
E 1/4 Cor. Sec. 16, T33, R24

Reset Cast Iron Monument at new position to match platting.



E 1/4 Cor. Sec. 16, T33, R24

Set Cast Iron Monument From Resurvey up 0.1'



All ties O.K.

Tie check

Sept. 21, 1965

M.D. Anderson

J. Dunlop

TEMPERATURE CORRECTED
AND HORIZONTALLY
TAPED MEASUREMENTS

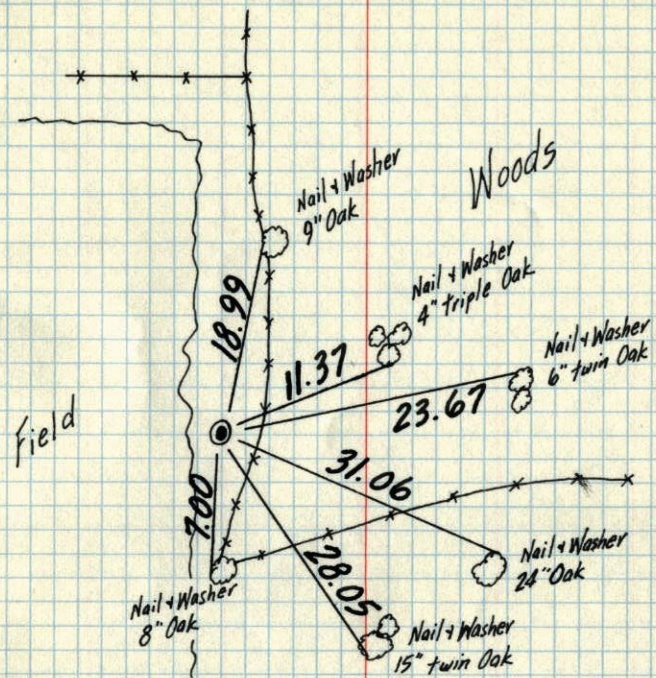
Sept. 8, 64

J. Oliver
J. Dunlop
M. Nordin

ROLAND W. ANDERSON
COUNTY SURVEYOR
ANOKA COUNTY, MINNESOTA

E 1/4 Cor. Sec. 16, T33, R24

Set Cast Iron Monument From Resurvey up 0.1'



Cor. location
revised. Don't
give out this
tie!

Sept. 8, 64

J. Oliver
J. Dunlop
M. Nordin

TEMPERATURE CORRECTED
AND HORIZONTALLY
TAPED MEASUREMENTS

ROLAND W. ANDERSON
COUNTY SURVEYOR
ANOKA COUNTY, MINNESOTA

E 1/4 Cor. Sec. 16, T33, R24

Set Cast Iron Monument from Resurvey

