

CERTIFICATE OF LOCATION OF GOVERNMENT CORNER

County of Anoka

State of Minnesota

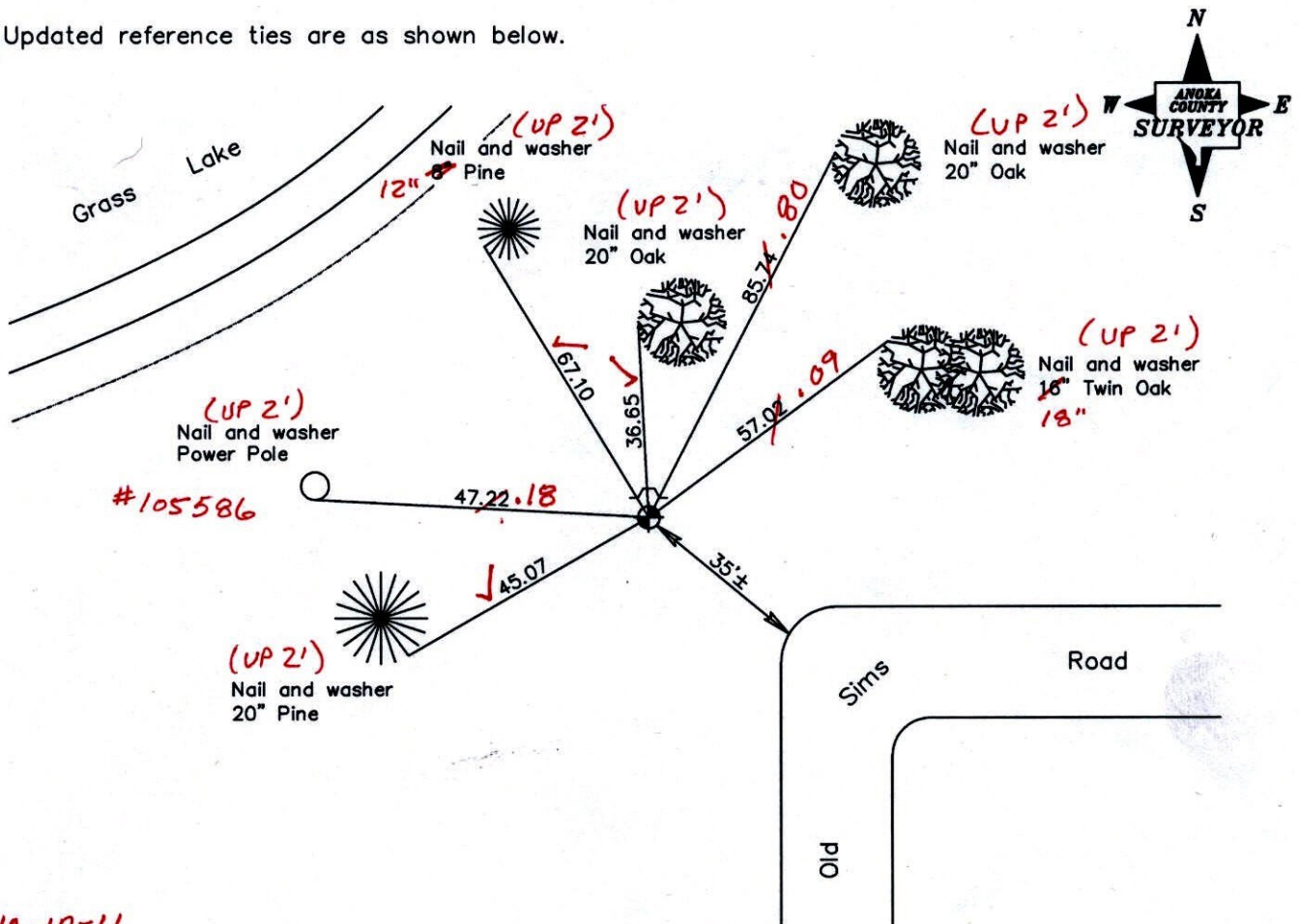
Witness Corner of Sec. 15 Township 33 Range 24
 (on east line of Northeast 1/4)

On the 19th day of March, 1973, the described corner was evidenced by area resurvey

and to perpetuate the location of said corner, at the exact location thereof, a permanent marker was placed consisting of a cast iron monument with a sign and post on the north side ✓
(MON. UP 0.10' ±)

AND on the ___ day of _____, _____, said permanent marker was _____

Updated reference ties are as shown below.



10-10-11
 BK-SS
 T/T-VRS
 Revised date

7/13/92
6/09/97
6/07/01

N.A.D. 1983 Coordinates
 (1996 Adjustment)

County Project Coordinates	
Northing	<u>216474.2168</u>
Easting	<u>489703.2052</u>
Date	<u>6/07/01</u>

I hereby certify that this United States public land survey monument record is correct and complete to the best of my knowledge and belief.

_____, Anoka County Surveyor

Minnesota License Number _____

VRS 3DQ = 0.08 N = 216474.131 E = 489703.113

CERTIFICATE OF LOCATION OF GOVERNMENT CORNER

County of Anoka

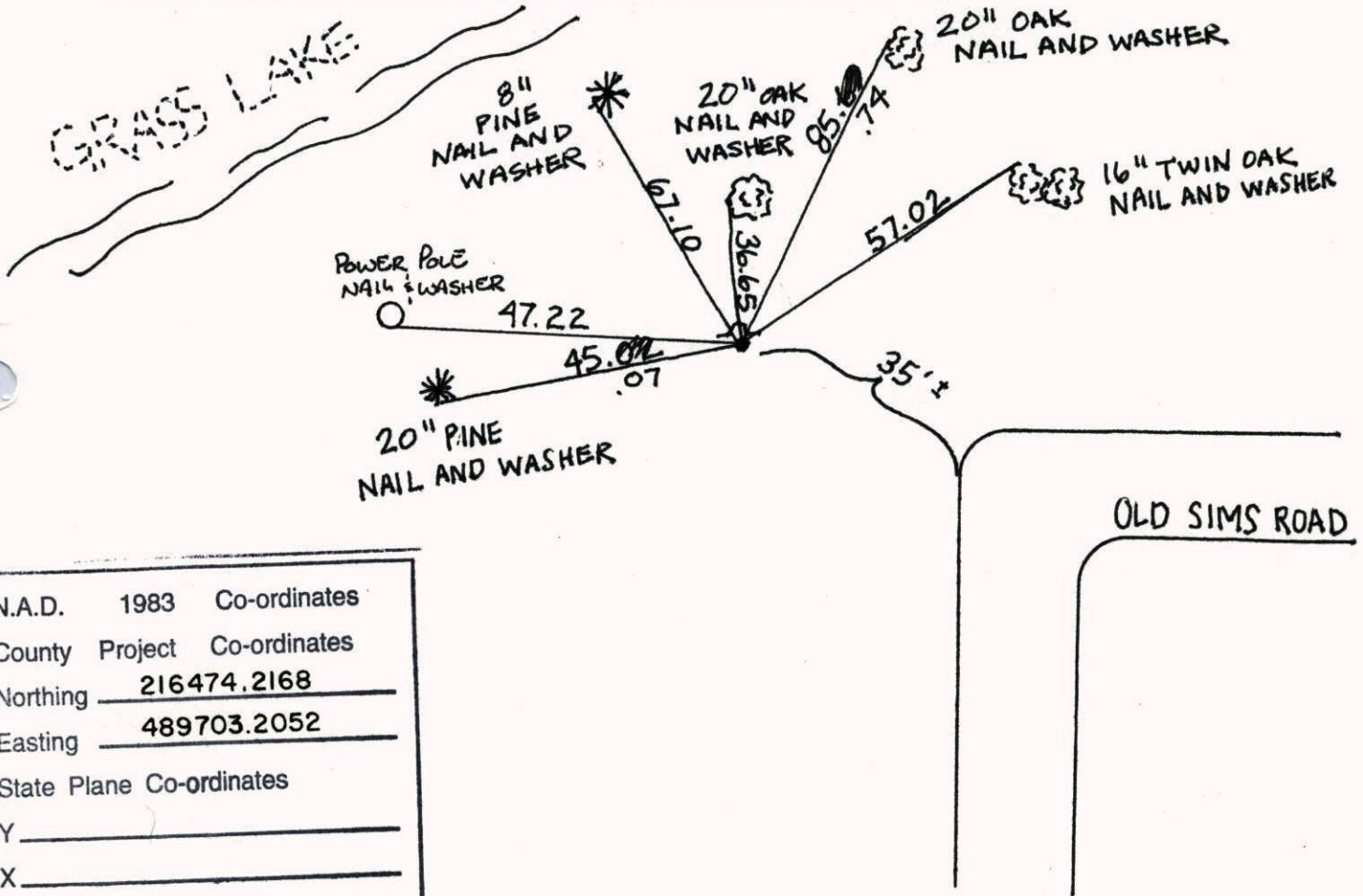
State of Minnesota

WITNESS ON Corner of Sec. 15 Township 33 Range 24
 EAST LINE OF NE QTR.

I hereby certify that on the 19 day of MARCH, 19 73, I found the described corner which was evidenced by AREA RESURVEY

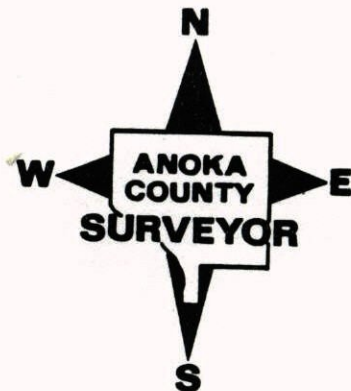
and I further certify that to perpetuate the location of said corner, I did, at the exact location thereof, place a permanent marker consisting of CAST IRON MON. SIGN AND POST ON NORTH SIDE

which reference or witness monuments are located in the manner following:



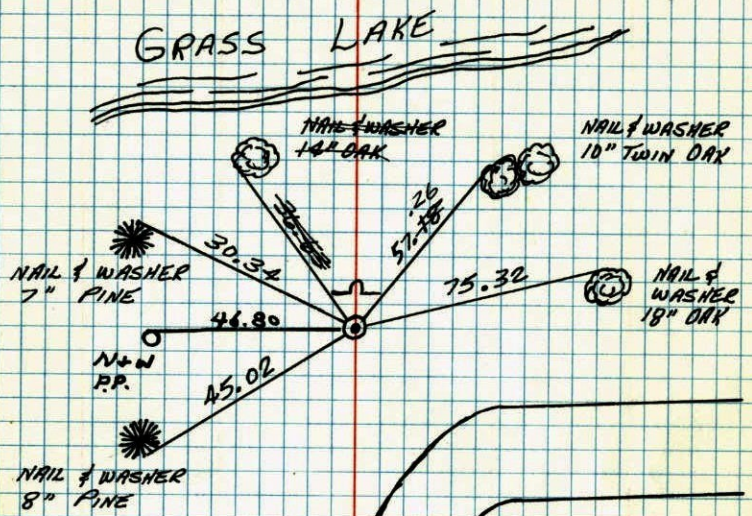
N.A.D.	1983	Co-ordinates
County	Project	Co-ordinates
Northing	<u>216474.2168</u>	
Easting	<u>489703.2052</u>	
State Plane Co-ordinates		
Y	_____	
X	_____	
Date	_____	

Revised date	Revised date	Revised date
<u>7-20-81</u>		
<u>8-13-84</u>		
<u>7-13-92</u>		
<u>6-9-97</u>		
<u>6-7-01</u>		



W.C. ON EAST LINE OF NE 1/4 SECTION 15 - T33-R24

RESET CAST IRON MONUMENT IN NEW LOCATION
AND RETIED. CAST IRON FLUSH WITH SIGN AND
POST ON NORTH SIDE. MAR. 19, 1977



Oct. 6-1977
H. LARSON
B. QUETZKO
J. BOETTCHER

TIE CHECK
7-5-78
O. DAHL
B. STEPHENS
M. NISROW

TIE CHECK
7-20-81
P. ROSS
R. HOENEN
G. NEFFNER

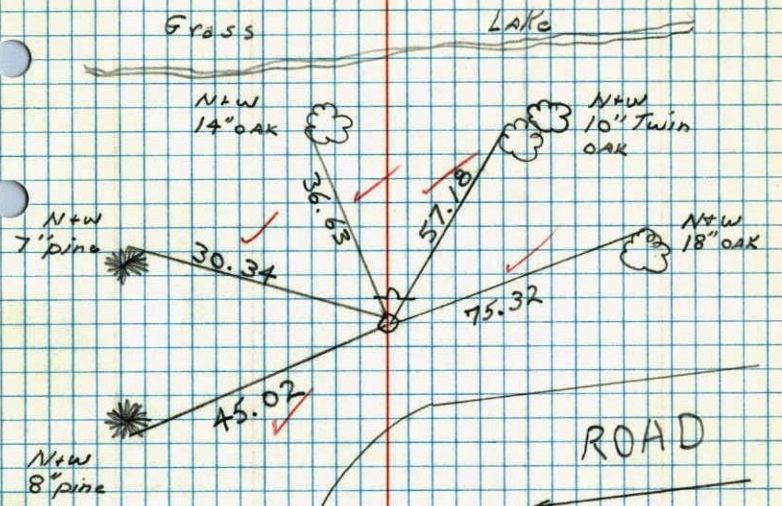
TIE CHECK
8-13-84
G. LIPS
D. ROSS
D. VOGEL

ROLAND W. ANDERSON
COUNTY SURVEYOR
ANOKA COUNTY, MINNESOTA

TEMPERATURE CORRECTED
AND HORIZONTALLY
TAPED MEASUREMENTS

W.C. on East Line of NE 1/4 Sec. 15 T33R24

Reset east iron monument in new
location and retied, cast flush with
sign and post on N side.



*7 55°
10-6-77
H. Larson
B. Quetzko
J. Boettcher

DIRT

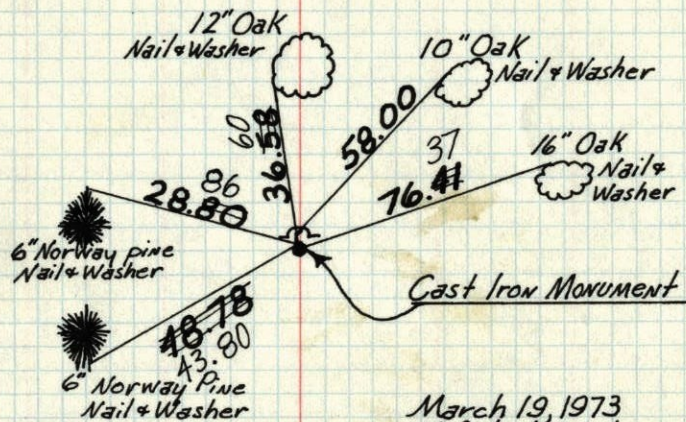
East

115

66

Wit. Corner on West line Sec. 14-T33-R24

On South side Grass Lake

Set Cast Iron Monument from area resurvey
Set steel sign & warning $\frac{1}{2}$ ' N. of Monument

March 19, 1973
M. D. Anderson +
H. J. Larson +
temp 30°
tape #11

Tie Check
July 1, 1975
D. Dahl
B. S.
G. A.

CORNER
MOVED
NEW
SEE
TIES

ROLAND W. ANDERSON COUNTY SURVEYOR
ANOKA COUNTY, MINNESOTA

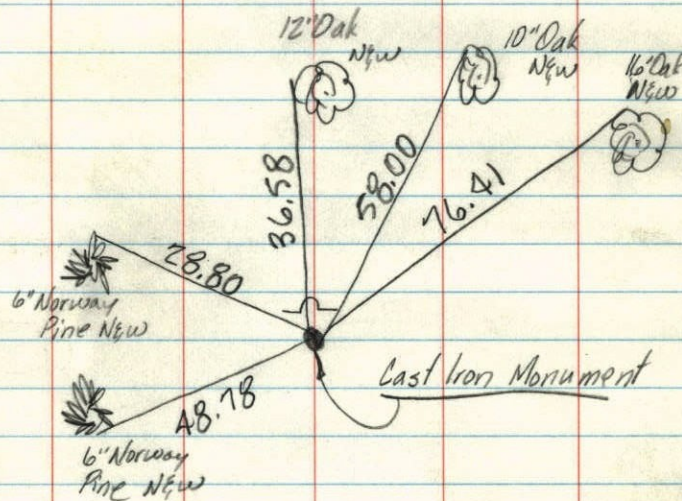
TEMPERATURE CORRECTED
AND HORIZONTALLY
TAPED MEASUREMENTS

East

151(?)

W.C. on West line Sec. 11-T33-R24

On S. side Grass Lake

Set Cast Iron Mon. from area resurvey
Set Steel sign & warning $\frac{1}{2}$ ' N. of Mon.

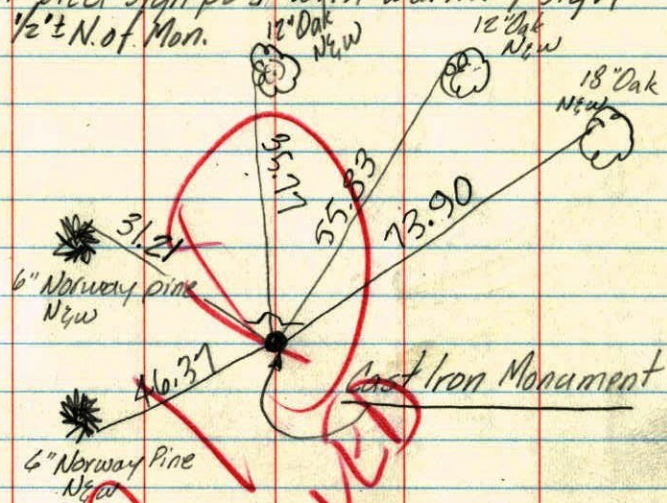
March 19, 1973
M. D. Anderson +
H. J. Larson +
temp 30°
tape #11

O.K.

W.C. on E. line Sec. 15-T33-R24
on S. side Grass Lake

set & tied Cast Iron Monument from
area resurvey

Set steel sign post with warning sign
1/2[±] N. of Mon.



NO MORE

March 14, 1973
M. D. Anderson
H. J. Larson
temp. 55°
tape #11