

CERTIFICATE OF LOCATION OF GOVERNMENT CORNER

County of Anoka

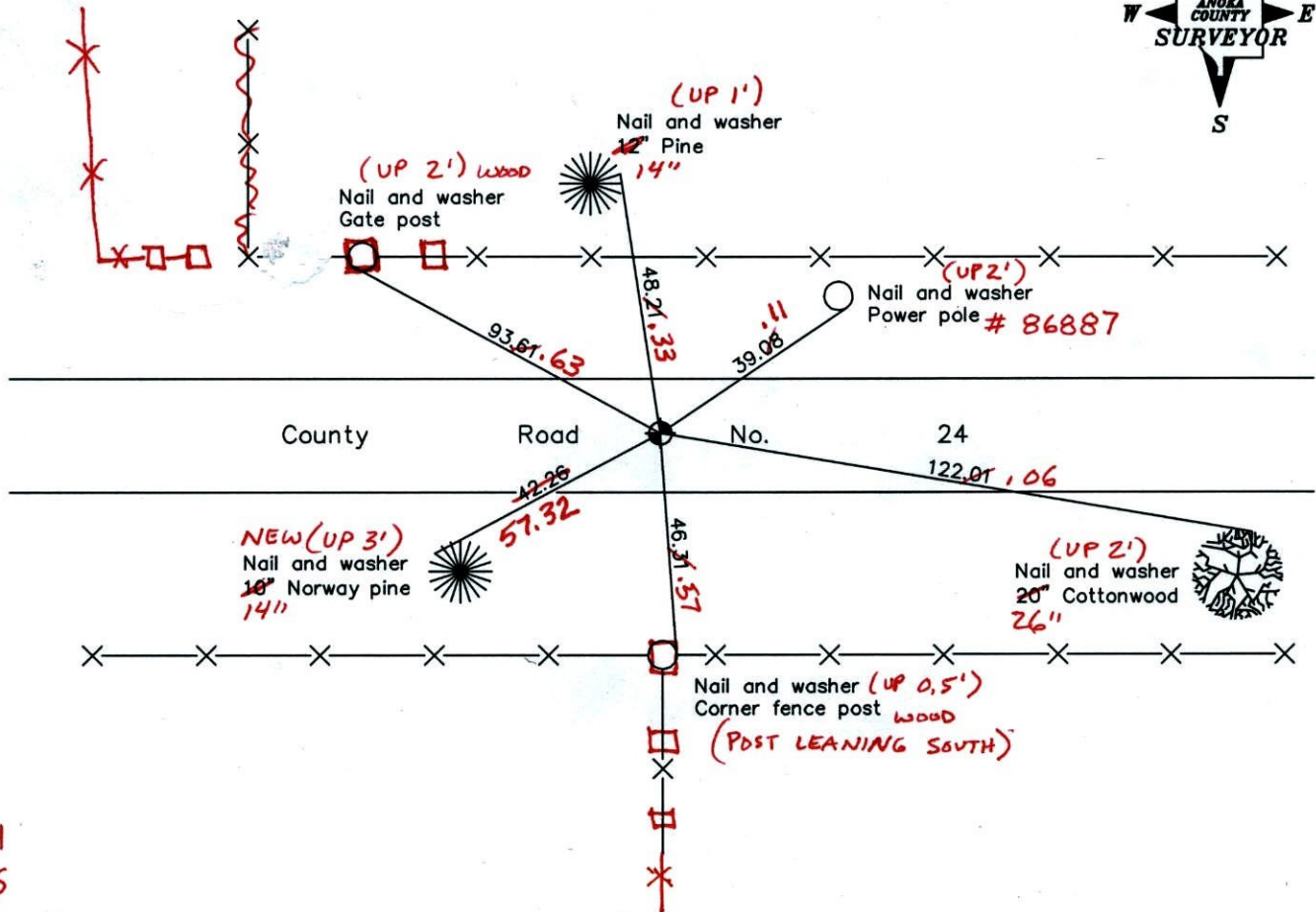
State of Minnesota

Northeast Corner of Sec. 4 Township 33 Range 24

I hereby certify that on the 25th day of May, 1961, I found the described corner which was evidenced by area resurvey

and I further certify that to perpetuate the location of said corner, I did, at the exact location thereof, place a permanent marker consisting of a cast iron monument ✓

which reference or witness monuments are located in the manner following:



9-6-11
BK-SS
T/T - VRS

Revised date

7/02/92
6/02/97
3/23/01

VRS3D = 0.06'
N = 227437.794
E = 484533.881

N.A.D. 1983 Coordinates
(1996 adjustment)

County Project Coordinates	
Northing	227437.8147
Easting	484533.9262

Date 3/23/01

CERTIFICATE OF LOCATION OF GOVERNMENT CORNER

County of Anoka

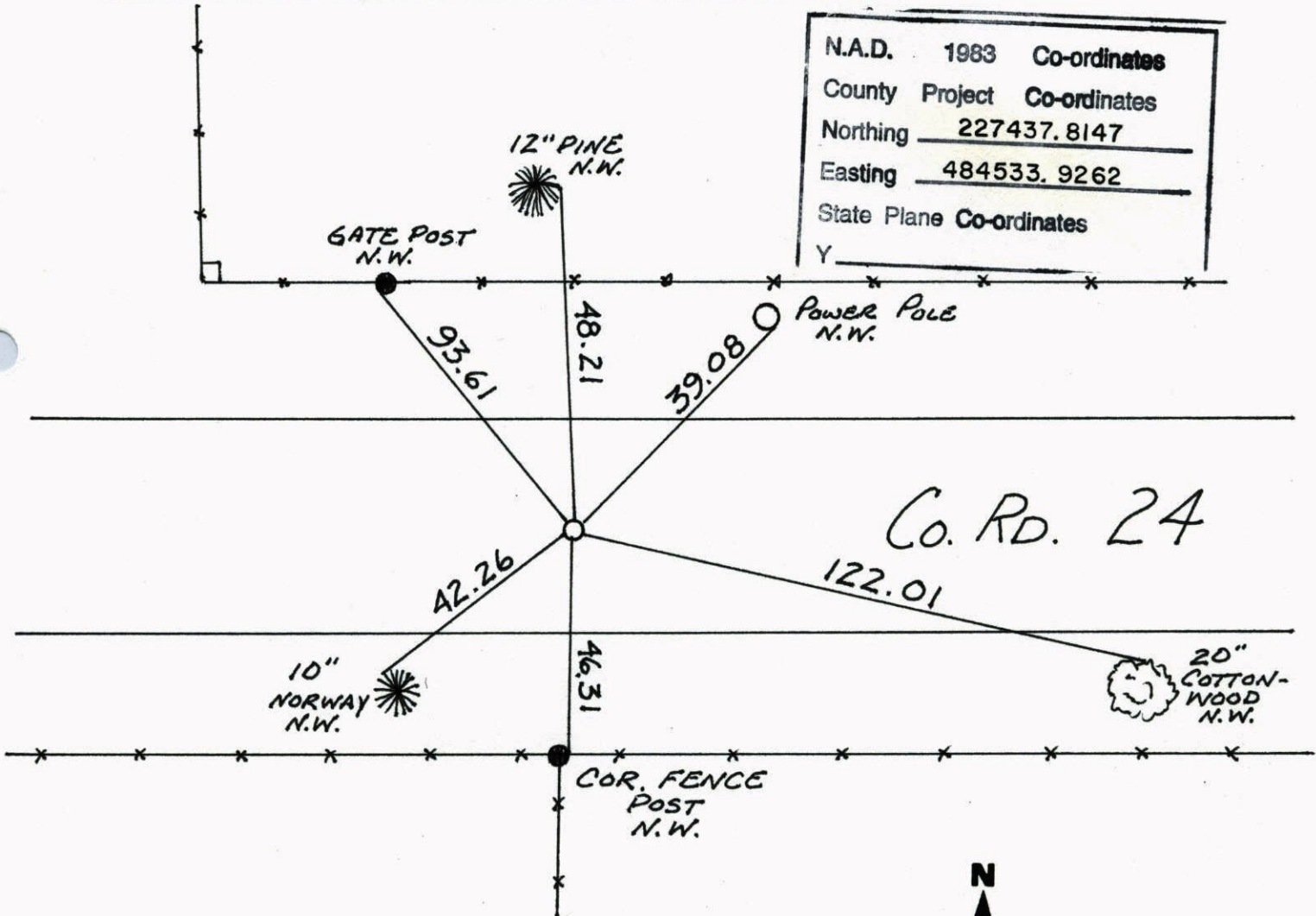
State of Minnesota

NORTHEAST Corner of Sec. 4 Township 33 Range 24

I hereby certify that on the 25 day of MAY, 1961, I found the described corner which was evidenced by AREA RESURVEY

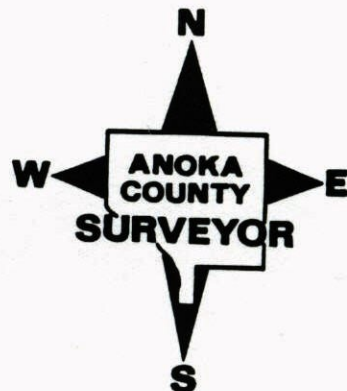
and I further certify that to perpetuate the location of said corner, I did, at the exact location thereof, place a permanent marker consisting of CAST IRON MON.

which reference or witness monuments are located in the manner following:



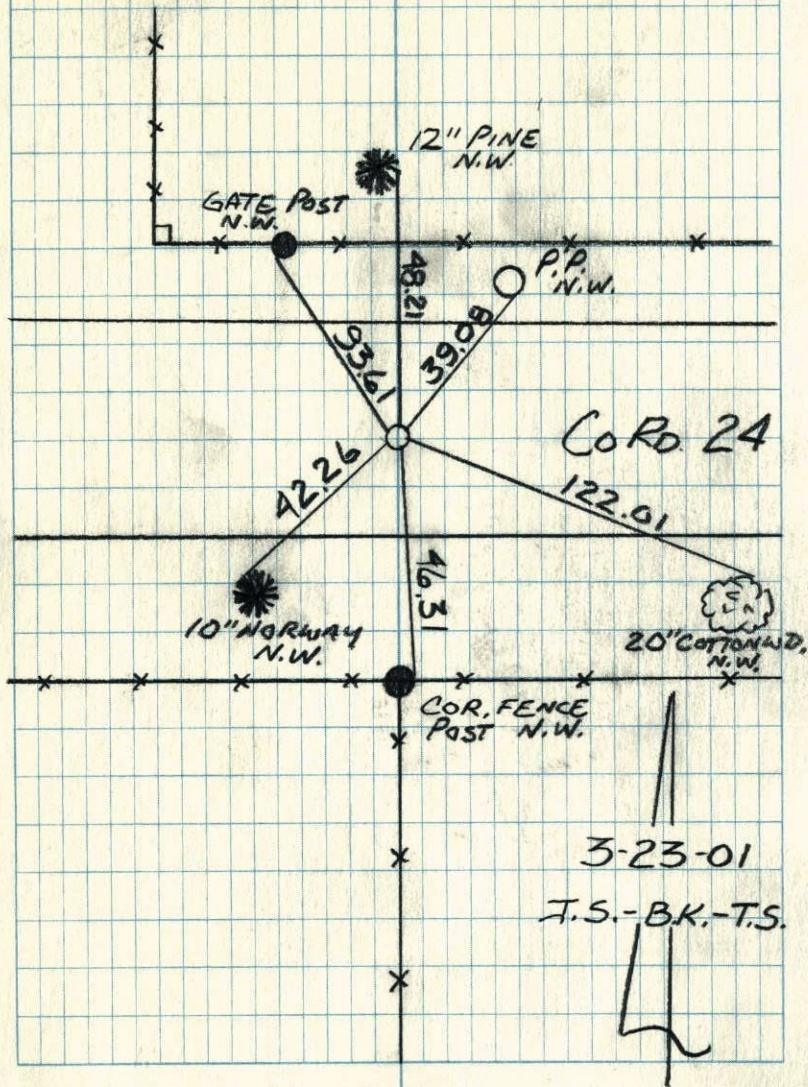
N.A.D.	1983	Co-ordinates
County Project		Co-ordinates
Northing	227437.8147	
Easting	484533.9262	
State Plane	Co-ordinates	
Y		

Revised date	Revised date	Revised date
7-2-92		
6-2-97		
3-23-01		



NORTHEAST SEC. 4 T 33 R 24

GPS AND RETIRED C.I.M.

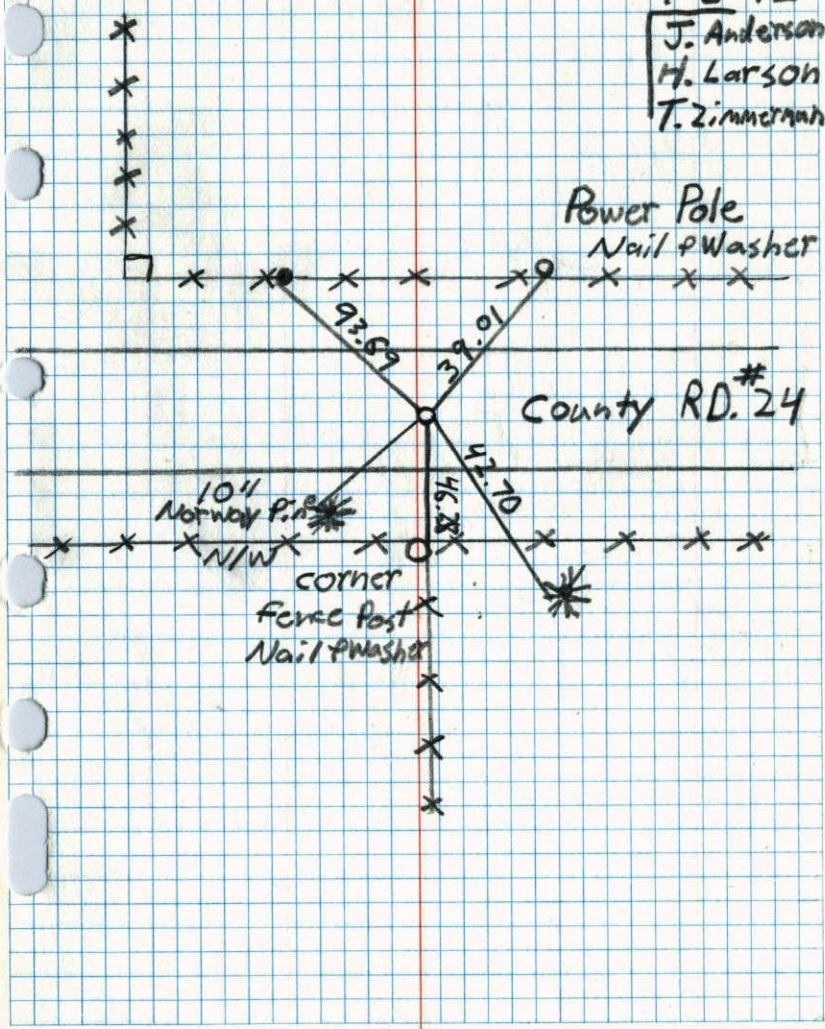


NORTHEAST of Sec 4 T 33 R 24
CAST IRON MON

7-2-92

J. Anderson
H. Larson
T. Zimmerman

NO. 448 TELEPHONE



NE Cor. Sec. 4-T33-R24

Set Cast Iron Monument from remaining

ties by H.A. Cartwright

May 25, 1961

R. Freeman
M. Anderson

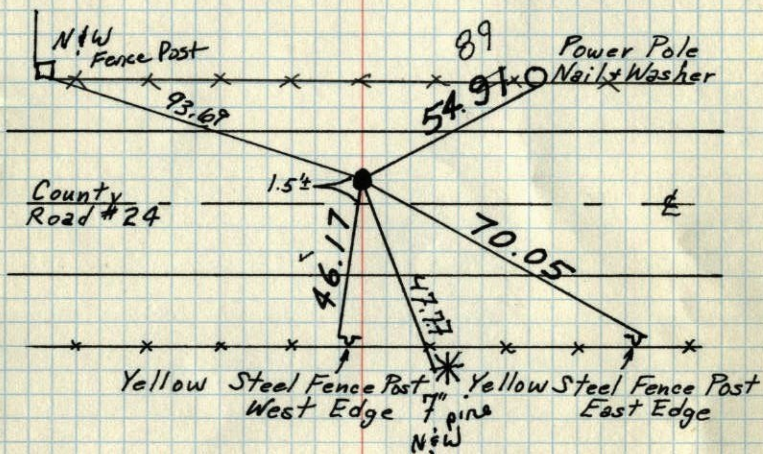
Set removeable Cast Iron Plush

1.5'± North of Centerline.

PK's 2.00' North + East

June 17, 1968

D. Powell
P. Pieh



Tie Check
Sept. 17, 1969
D. Powell
R. Olson

Tie Check
July 19, 1971
R. Brien
J. Boettcher
B. Olson

Tie Check
June 25, 1975
D. Dahl
B. Sannerud
G. Adams

Raised 10.24.77
H. Larson
B. Guetzko

TIE CHECK
6-23-78
D. DAHL
B. STEPHENS
M. KISFOW

Tie check Tie check
8-7-84 7-15-81
D. ROSS P. ROSS
G. LIPS P. HORNBY
D. Vogel G. NEFFINGER

TEMPERATURE CORRECTED AND HORIZONTALLY TAPED MEASUREMENTS #200 71°

NE. COR SEC. 4-33-24

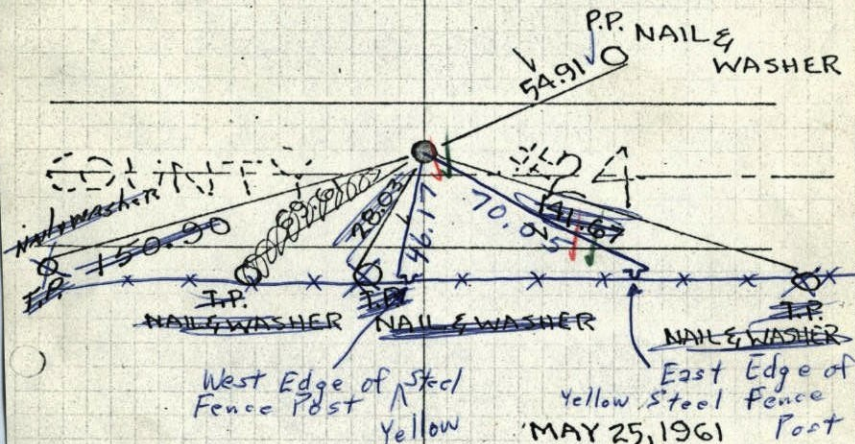
SET CAST IRON MONUMENT FROM REMAINING TIES BY H.A. CARTWRIGHT

1.5'± North of Traveled Road.

Set removeable top Cast Iron Plush

PK's 2.00' North + East. June 17, 1968

D. Powell
P. Pieh



R. FREEMAN
M. ANDERSON

Raised 9/17/69 #9-70°
D. Powell
R. Olson

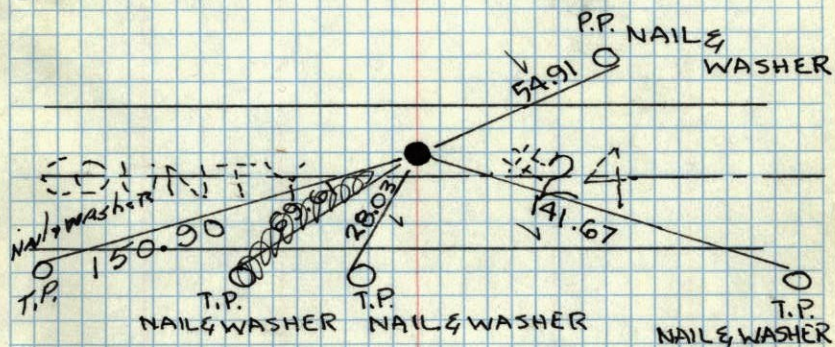
ROLAND W. ANDERSON
COUNTY SURVEYOR
ANOKA COUNTY, MINNESOTA
MA.

TEMPERATURE CORRECTED AND HORIZONTALLY TAPED MEASUREMENTS MA

NE. COR SEC. 4-33-24

SET CAST IRON MONUMENT FROM
REMAINING TIES BY H.A. CARTWRIGHT
1.5'± North of Traveled Road.

Set removeable top Cast Iron flush
PK's 2.00' North + East. June 17, 1968
D. Powell
P. Pich



MAY 25, 1961
R. FREEMAN
M. ANDERSON

ROLAND W. ANDERSON COUNTY SURVEYOR ANOKA COUNTY, MINNESOTA
TEMPERATURE CORRECTED AND HORIZONTALLY TAPED MEASUREMENTS

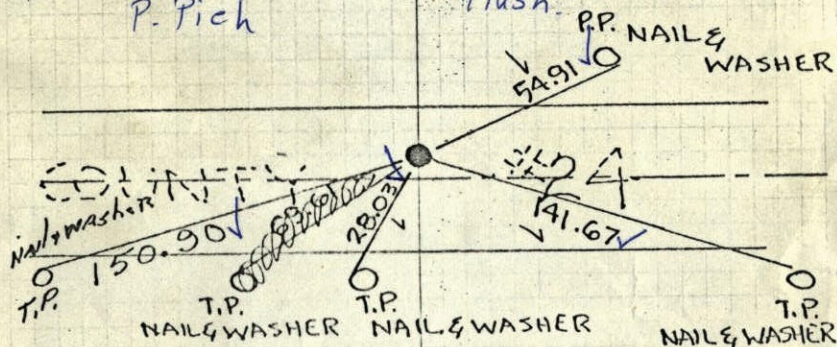
MA.

MA

NE. COR SEC. 4-33-24

SET CAST IRON MONUMENT FROM
REMAINING TIES BY H.A. CARTWRIGHT
1.5'± North of Traveled Road.

~~Down C.I.~~
Set removeable
Top C.I. PK's 2.00'
N + E
flush. June 17, 1968
D. Powell
P. Pich



MAY 25, 1961
R. FREEMAN
M. ANDERSON

ROLAND W. ANDERSON COUNTY SURVEYOR ANOKA COUNTY, MINNESOTA
TEMPERATURE CORRECTED AND HORIZONTALLY TAPED MEASUREMENTS

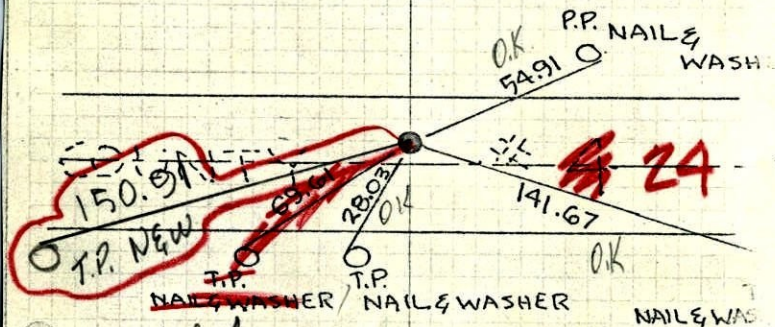
MA.

MA

2
NE. COR SEC. 4-33-24

SET CAST IRON MONUMENT FROM
REMAINING TIES BY H.A. CARTWRIGHT
1.5'± north of traveled

Entered
H.L.



Gone

tape #5
temp 78°

Tie check

July 16, 1965

M. O. Anderson

J. Dunlop

ROLAND W. ANDERSON
COUNTY SURVEYOR
ANOKA COUNTY, MINNESOTA

MA

MAY 25, 1961

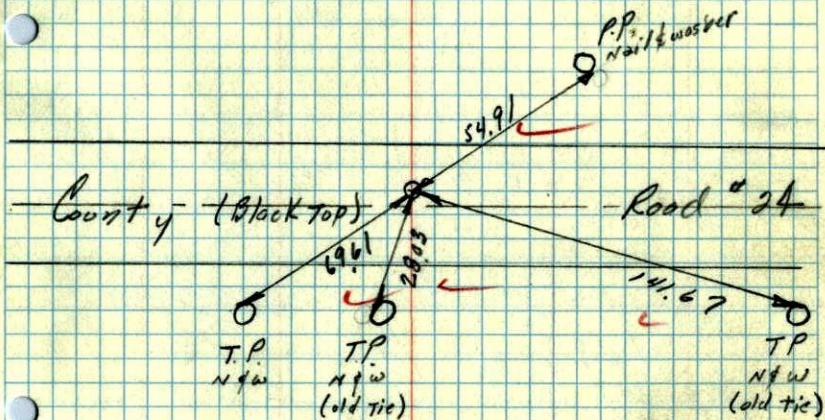
R. FREEMAN
M. ANDERSON

TEMPERATURE CORRECTED
AND HORIZONTALLY
TAPED MEASUREMENT

MA

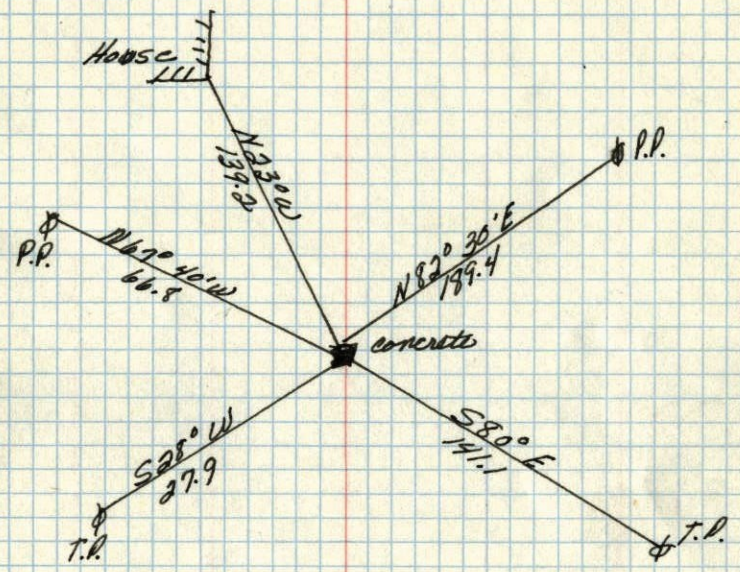
25 May 1961
Freeman & Anderson
+60°

NE Cor. Sec 4-33-24 - Oak Grove
Two of H.A. Cartwrights Ties Remain
One Mon Gone we dug 40' down in
Road. Set Cast Iron Mon from Remain-
ing Ties



TEMP. CORR
for 60°

NE corner of Sec. 4 T.33. R.24
Conc. Mon.



Sept. 30, 1946
Cartwright