

CERTIFICATE OF LOCATION OF GOVERNMENT CORNER

County of Anoka

State of Minnesota

Northwest Corner of Sec. 19 Township 33 Range 24

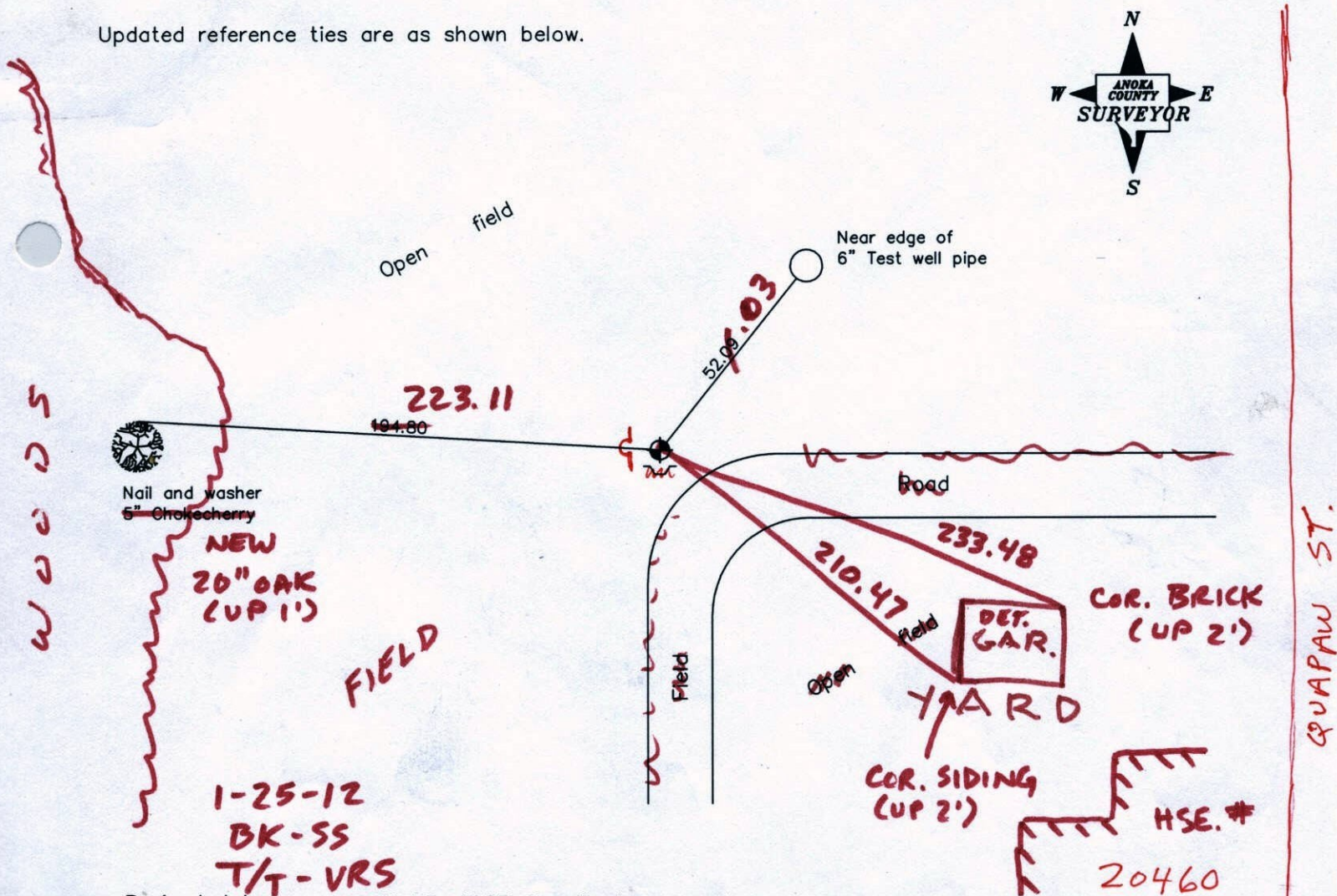
On the 6th day of April, 1964, the described corner was evidenced by a 4" square concrete monument

and to perpetuate the location of said corner, at the exact location thereof, a permanent marker was placed consisting of a cast iron monument with a sign and post on the south side

(MON. DOWN 0.5' ±) ██████████ COULD USE NEW SIGN & POST
 NEW SIGN & POST ADDED FACING EAST (4/5/12)

AND on the ___ day of _____, _____, said permanent marker was _____

Updated reference ties are as shown below.



Revised date

6/17/92
6/30/97

N.A.D. 1983 Coordinates
(1996 Adjustment)

County Project Coordinates	
Northing	<u>211914.8930</u>
Easting	<u>468647.5992</u>
Date	<u>6/28/01</u>

I hereby certify that this United States public land survey monument record is correct and complete to the best of my knowledge and belief.

_____, Anoka County Surveyor
 Minnesota License Number _____

VRS 3D = 0.05 N = 211914.9145 E = 468647.5416

CERTIFICATE OF LOCATION OF GOVERNMENT CORNER

County of Anoka

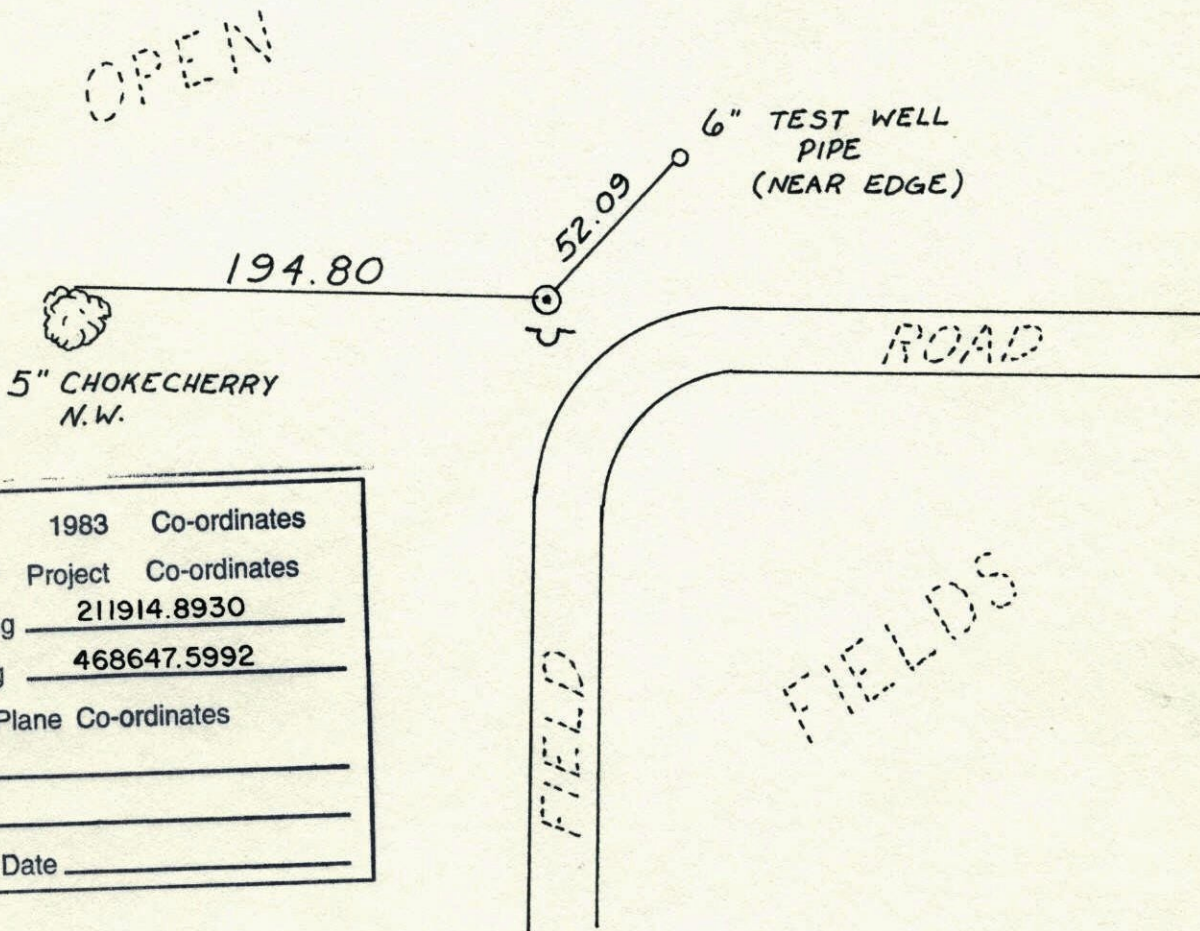
State of Minnesota

NORTHWEST Corner of Sec. 19 Township 33 Range 24

I hereby certify that on the 6 day of APRIL, 1964, I found the described corner which was evidenced by 4" SQUARE CONCRETE MON.

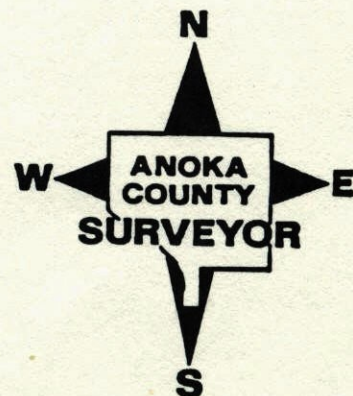
and I further certify that to perpetuate the location of said corner, I did, at the exact location thereof, place a permanent marker consisting of CAST IRON SIGN AND POST ON SOUTH SIDE

which reference or witness monuments are located in the manner following:

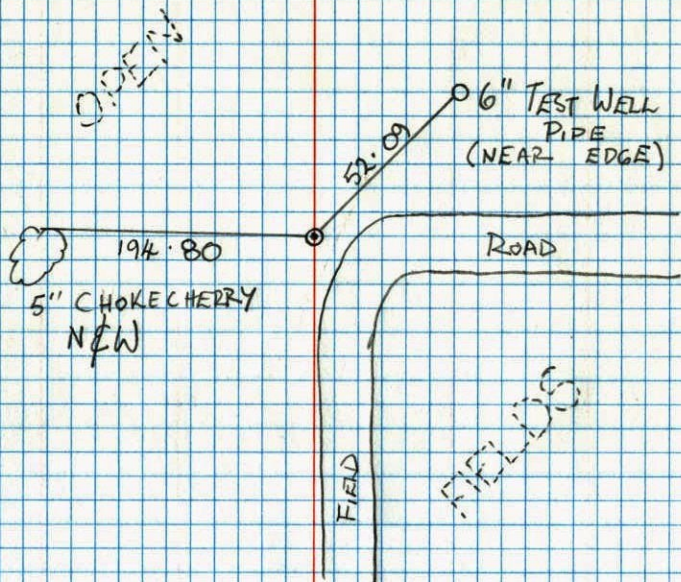


N.A.D.	1983	Co-ordinates
County	Project	Co-ordinates
Northing	<u>211914.8930</u>	
Easting	<u>468647.5992</u>	
State Plane Co-ordinates		
Y	_____	
X	_____	
Date	_____	

Revised date	Revised date	Revised date
<u>6-17-92</u>		
<u>6-30-97</u>		

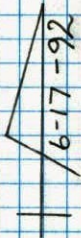


RETIE CAST IRON MONUMENT
NORTHWEST SEC 19 T 33 R 24



194.80
5" CHOKECHERRY
NEW

FIELD
FIELDS



T. ZIMMERMAN
J. ANDERSON
H. LARSON

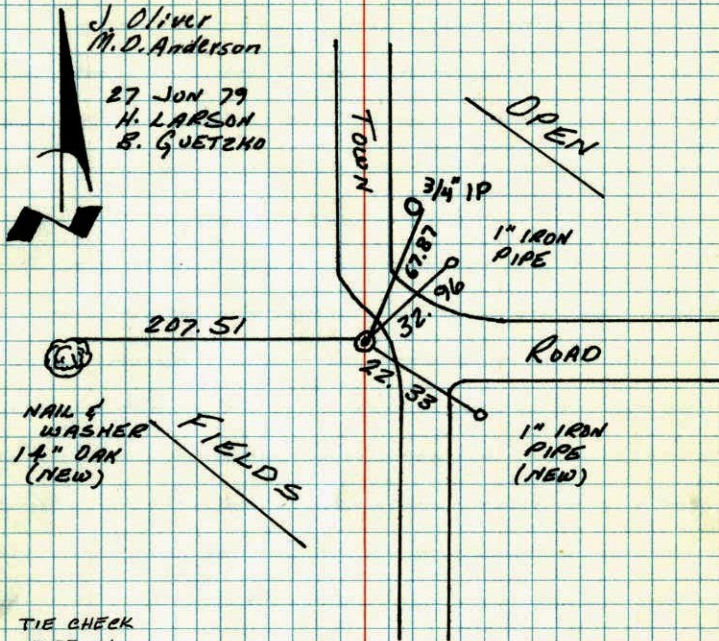
N.W. CORNER SECTION 19-T33-R24

RETIED CAST IRON MONUMENT SET IN 1971 BY
BRIEN, ROETTMER, AND OLSON. CAST IRON FLUSH,
WITH STEEL FENCE POST AND SIGN ON NORTH SIDE.

April 6, 1964

J. OLIVER
M. D. ANDERSON

27 JUN 79
H. LARSON
E. G. JETZHO



NAIL &
WASHER
1 1/2" OAK
(NEW)

1" IRON
PIPE
(NEW)

TIE CHECK
7-22-81
P. ROSS
P. HORNBY
G. NEFFINGER

TIE CHECK
8-6-84
G. LIPS
D. ROSS
D. VOGEL

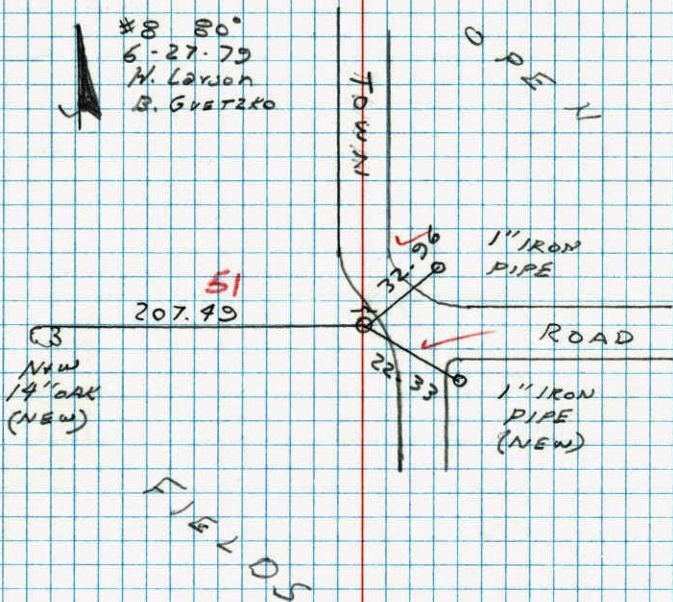
TEMPERATURE CORRECTED
AND HORIZONTALLY
TAPED MEASUREMENTS

ROLAND W. ANDERSON
COUNTY SURVEYOR
ANOKA COUNTY, MINNESOTA

NW COR. SECTION 19 T33 R24

RETIRED CAST IRON MONUMENT SET
IN 1971 BY BRIEN, BOETTCHER & OLSON.
C.I. FLUSH WITH STEEL POST & SIGN
ON N SIDE.

#8 80°
6-27-79
H. Larson
B. Gvetzko



N.W. Cor. Sec. 19-33-24

found 4"x4" concret monument
with top broken off

Placed steel fence post on west
side

Steel fence post down - replaced concrete
with Cast Iron Mon. flush. placed steel fence
post with Gort. Survey Corner Sign up 3" ±
April 6, 1964

J. Oliver
M.D. Anderson

OPEN FIELD

3/4" IRON BAR on
N.W. cor and 1"
IRON PIPE on SE.
cor. of conc.

OPEN FIELD

brush & ridge row

Tie Check
July 7 1975
D. Dahl
B. Sannerud
G. Adams

Hole drilled
in Rock

OPEN FIELD

Tie check
July 22 1965
M.D. Anderson
J. Dunlop

Tie Check
June 28 1968
D. Powell
P. Pich
R. Olson

OPEN FIELD

July 27 1971
R. Brien
J. Boettcher
B. Olson

ROLAND W. ANDERSON
COUNTY SURVEYOR
ANOKA COUNTY, MINNESOTA

TEMPERATURE CORRECTED
AND HORIZONTALLY
TAPED MEASUREMENTS

N.W. Cor. Sec. 19-33-24

found 4"x4" concret monument
with top broken off

Placed steel fence post on we.
side

April 6, 1964

J. Oliver
M. D. Anderson

OPEN FIELD

OPEN FIELD

3/4" iron bar on N.W.
cor. & 1" iron pipe
on S.E. Cor. CONC.

brush & ridge row

ROAD

OPEN FIELD

OPEN FIELD

tie check

Cor. in place

July 22, 1965

M. D. Anderson

J. Duvlop

ROLAND W. ANDERSON
COUNTY SURVEYOR
ANOKA COUNTY, MINNESOTA

TEMPERATURE CORRECTED
AND HORIZONTALLY
TAPED MEASUREMENTS

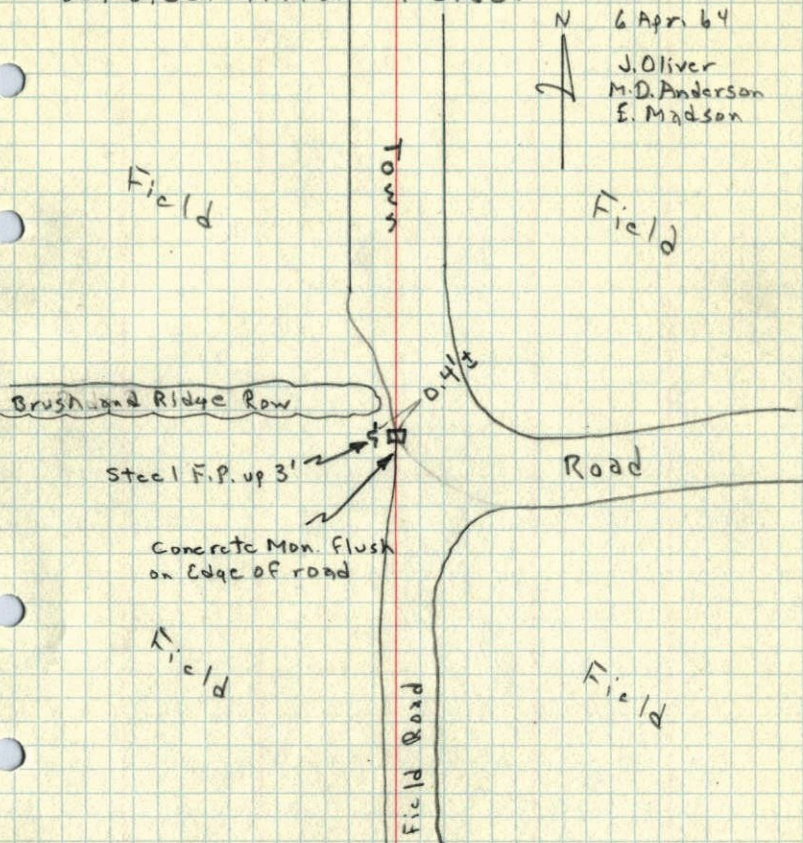
NW Cor. Sec. 19, T33, R24

Found 4" Sq. Concrete Monument with top
broken off. I.P.'s on NW and SW corners.

Set Steel F.P. on W. Side.

6 Apr 64

J. Oliver
M. D. Anderson
E. Madson



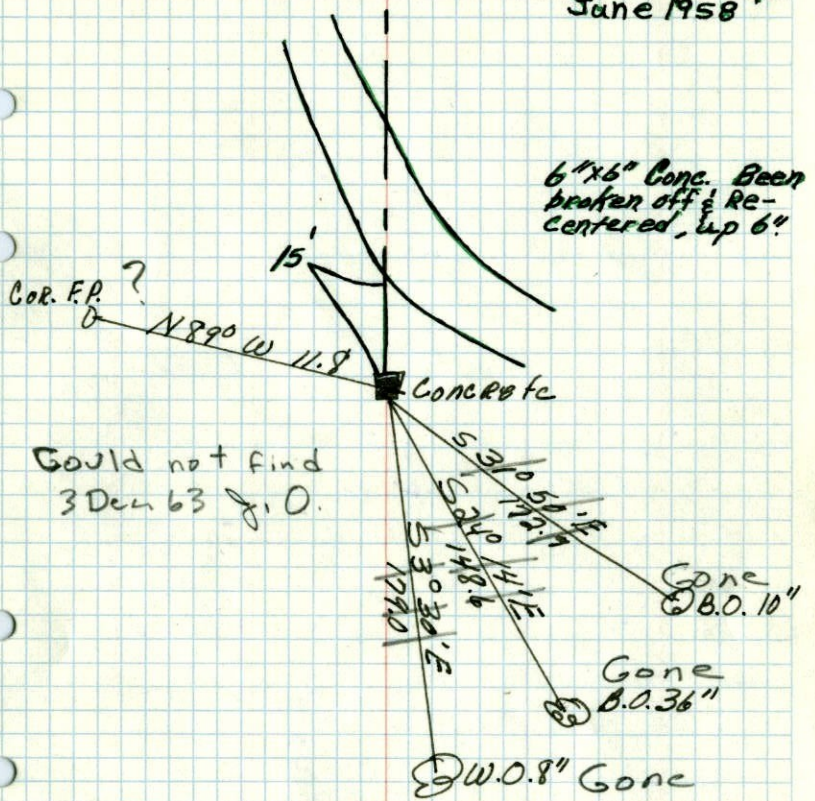
TEMP. & TAPE
CORR. IN RED

31 29

NW corner of Sec. 19 T33 R24 ✓

Con. Mon.

Minn. Hwy. Dept.
June 1958



Could not find
3 Dec 63 J.O.

MAR 27 1944
Cartwright

5 NW Corn. Sec. 19, T33, R24

Minn. Hwy. Dept.

June 1958

