

CERTIFICATE OF LOCATION OF GOVERNMENT CORNER

County of Anoka

State of Minnesota

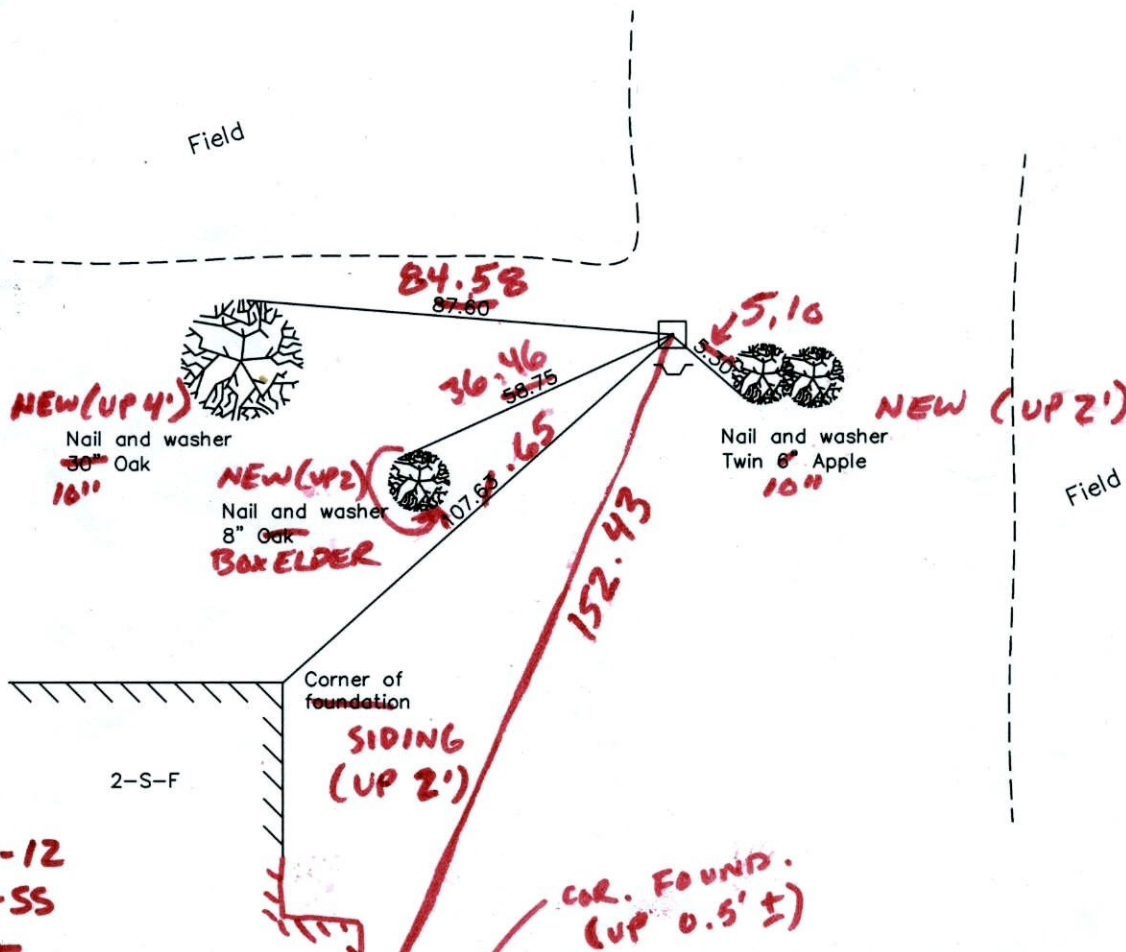
West 1/4 Corner of Sec. 19 Township 33 Range 24

On the 22nd day of July, 1960, the described corner was evidenced by a concrete monument

and to perpetuate the location of said corner, at the exact location thereof, a permanent marker was placed consisting of the concrete monument with a sign and post on the south side

AND on the ___ day of _____, _____, said permanent marker was _____

Updated reference ties are as shown below.



**1-23-12
BK-SS
T/T**

Revised date
6/17/92
7/09/97

N.A.D. 1983 Coordinates (1996 Adjustment)	
County Project Coordinates	
Northing	<u>209281.8305</u>
Easting	<u>468642.0424</u>
Date	<u>11/07/01</u>

I hereby certify that this United States public land survey monument record is correct and complete to the best of my knowledge and belief.

_____ Date _____

_____, Anoka County Surveyor

Minnesota License Number _____

CERTIFICATE OF LOCATION OF GOVERNMENT CORNER

County of Anoka

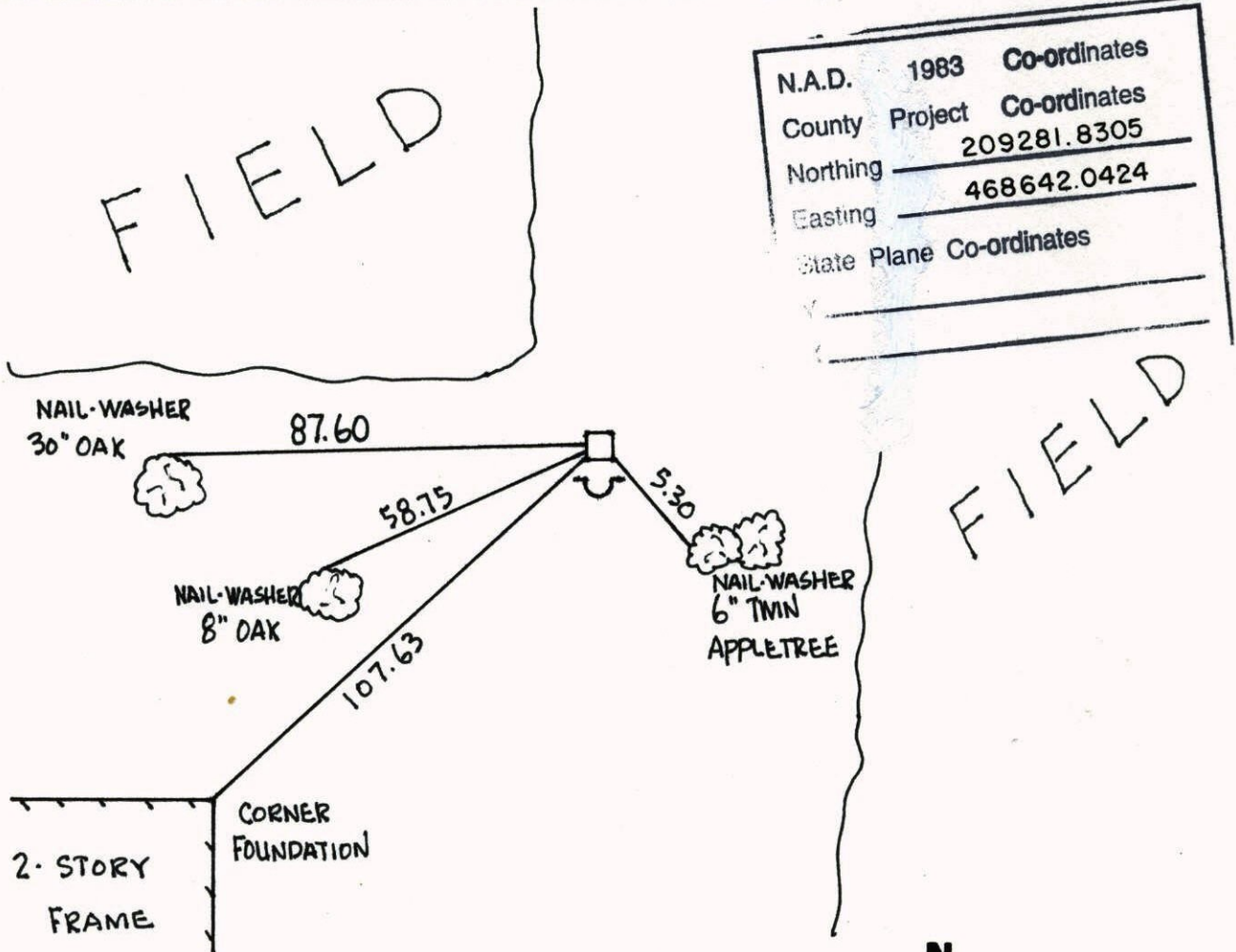
State of Minnesota

WEST QTR. Corner of Sec. 19 Township 33 Range 24

I hereby certify that on the 22ND day of JULY, 19 60, I found the described corner which was evidenced by CONCRETE MONUMENT

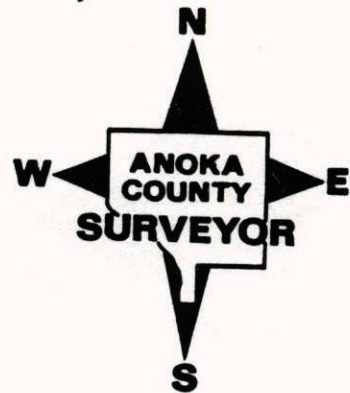
and I further certify that to perpetuate the location of said corner, I did, at the exact location thereof, place a permanent marker consisting of SAME
SIGN & POST ON SOUTH SIDE.

which reference or witness monuments are located in the manner following:



N.A.D.	1983	Co-ordinates
County	Project	Co-ordinates
Northing	209281.8305	
Easting	468642.0424	
State Plane Co-ordinates		

Revised date	Revised date	Revised date
6-17-92		
7-9-97		



WEST QTR COR. SEC 19 T 33 R. 24

RETIED CONG. MON.

7-9-97

SIGN & POST ON SOUTH

H. ASKEW

L. GRAYSON

FIELD

FIELD

NAIL-WASHER
30" OAK 87.60NAIL-WASHER
8" OAKNAIL-WASHER
6" TWIN
APPLE TREECORNER
FOUNDATION

2-S-F

58.75

5.30

107.63

NO. 448

TELEPHONE

RETIED CONCRETE MON.

WEST $\frac{1}{4}$ S 19 T 33 R 24

FIELD

FIELD

30" OAK
N&W

87.60

5.30

127.25

12" BLACK OAK
N&W16" OAK
N&W6" TWIN
APPLE
N&W

106.60

WOODS

T. ZIMMERMAN

J. ANDERSON

H. LARSON

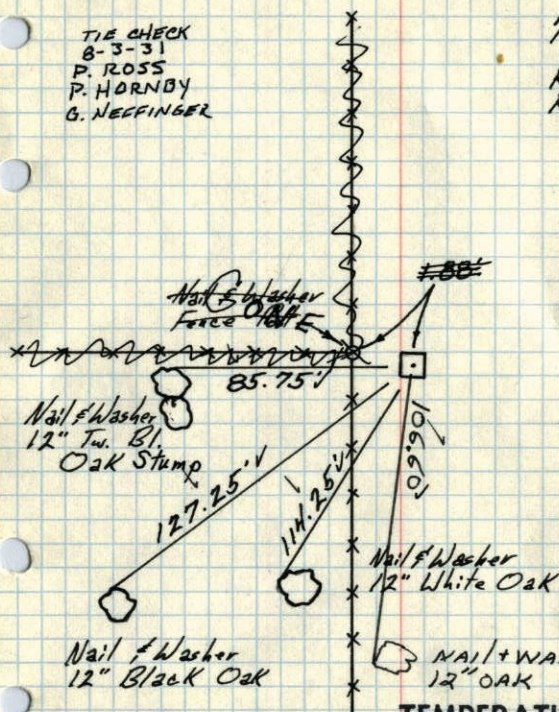
6-17-92

NO. 448

TELEPHONE

32 84
W 1/4 Cor Sec 19-T33-R24
Cone. Mon. 9' Up 6"

TIE CHECK
8-3-31
P. ROSS
P. HORNBY
G. NEFFINGER



7/22/60

R. Giddings
R. Carlson

Tie Check
July 1, 1968
H. Larson
R. Olson
P. Pieh

Tie Check
Aug. 6, 1971
R. Brien
J. Boettcher
D. Olson

Tie Check
July 17, 1975
D. Dahl
B. Sannerud
G. Adams

TEMPERATURE CORRECTED
AND HORIZONTALLY
TAPED MEASUREMENTS

Tie check
Sept. 7 1965
H. Larson
J. Dunlop

TIE CHECK
8-30-84
D. VOGEL

TIE CHECK
7-17-78
D. DAHL
B. STEPHENS

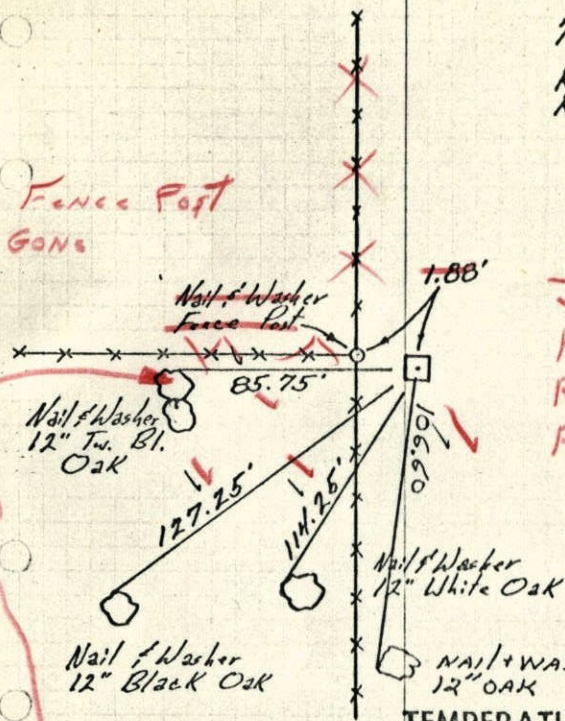
ROLAND W. ANDERSON
COUNTY SURVEYOR
ANOKA COUNTY, MINNESOTA

43
W 1/4 Cor Sec 19-T33-R24
Cone. Mon. 9' Up 6"

7/22/60

R. Giddings
R. Carlson

July 1, 1968
H. Larson
R. Olson
P. Pieh



Fence Post
GONE

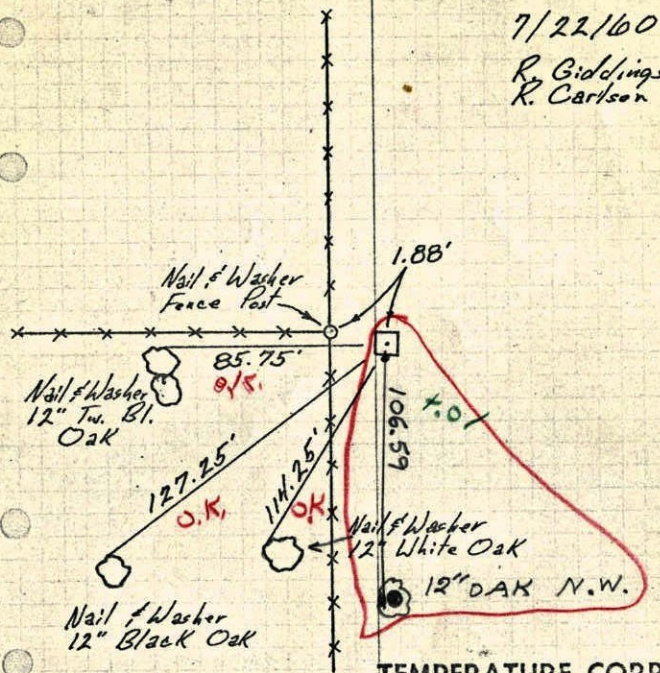
Tie check
Sept. 7 1965
H. Larson
J. Dunlop

Stump

TEMPERATURE CORRECTED
AND HORIZONTALLY
TAPED MEASUREMENTS

ROLAND W. ANDERSON
COUNTY SURVEYOR
ANOKA COUNTY, MINNESOTA

43
W $\frac{1}{4}$ Cor. Sec. 19 - T33 - R24
Conc. Mon. 9' up 6"



checked:
Sept. 7 1965
H. LARSON
J. Dunlop

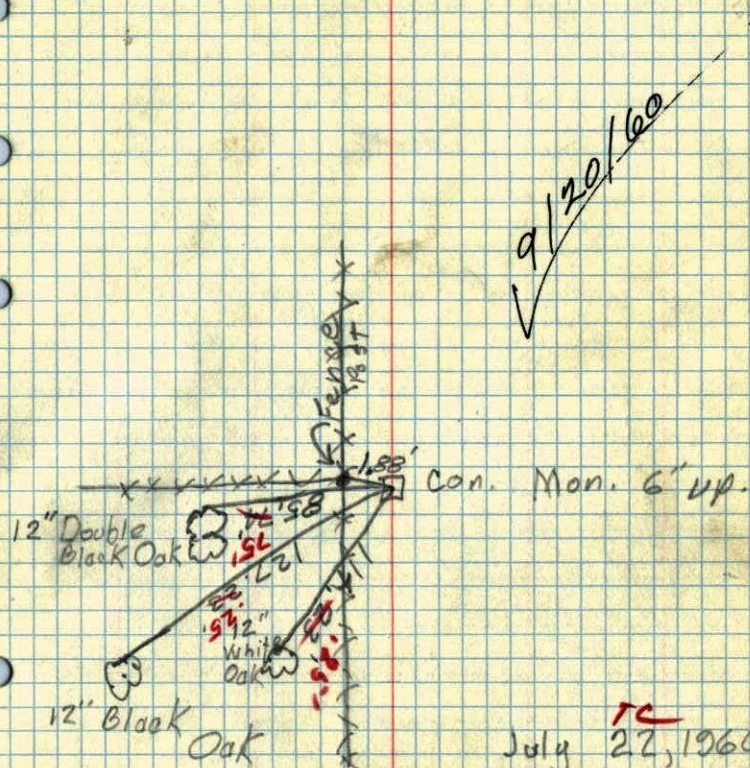
Tape 5 5

TEMPERATURE CORRECTED
AND HORIZONTALLY
TAPED MEASUREMENTS

ROLAND W. ANDERSON
COUNTY SURVEYOR
ANOKA COUNTY, MINNESOTA

Entered
H/L

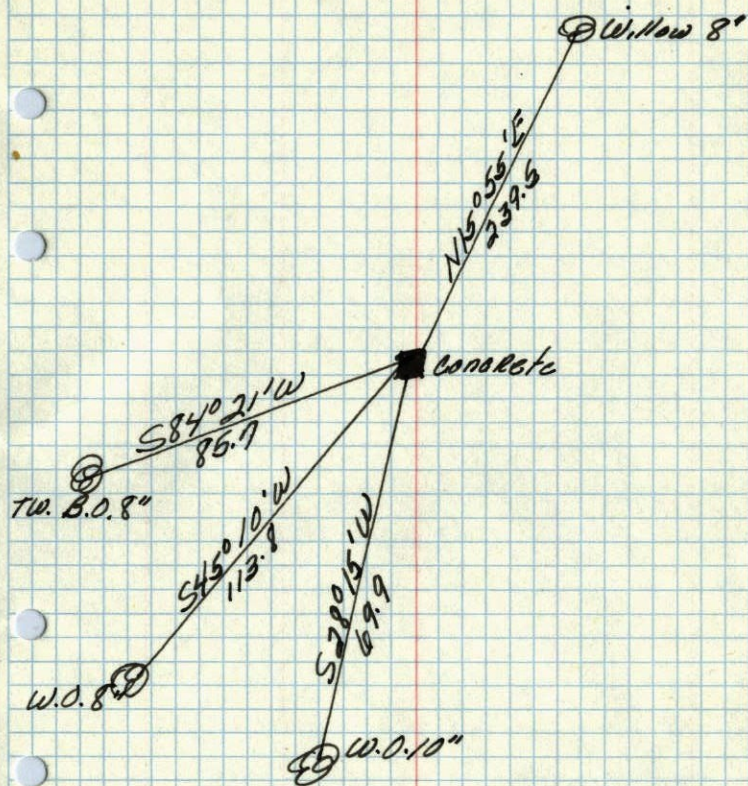
W $\frac{1}{4}$ Corn. Sec. 19 T.33, R. 24.
(Oak Grove)



July 27, 1960
Temp 91°
R. Giddings
R. Carlson

W¹/₄ corner of Sec. 19 + 33 R24 ✓

Concrete Monument



Mar. 27, 1944
Gartwright