

CERTIFICATE OF LOCATION OF GOVERNMENT CORNER

County of Anoka

State of Minnesota

East 1/4 Corner of Sec. 19 Township 33 Range 24

On the 2nd day of December, 1963, the described corner was evidenced by a 4" square concrete monument

and to perpetuate the location of said corner, at the exact location thereof, a permanent marker was placed consisting of the concrete monument with a sign and post on the west side

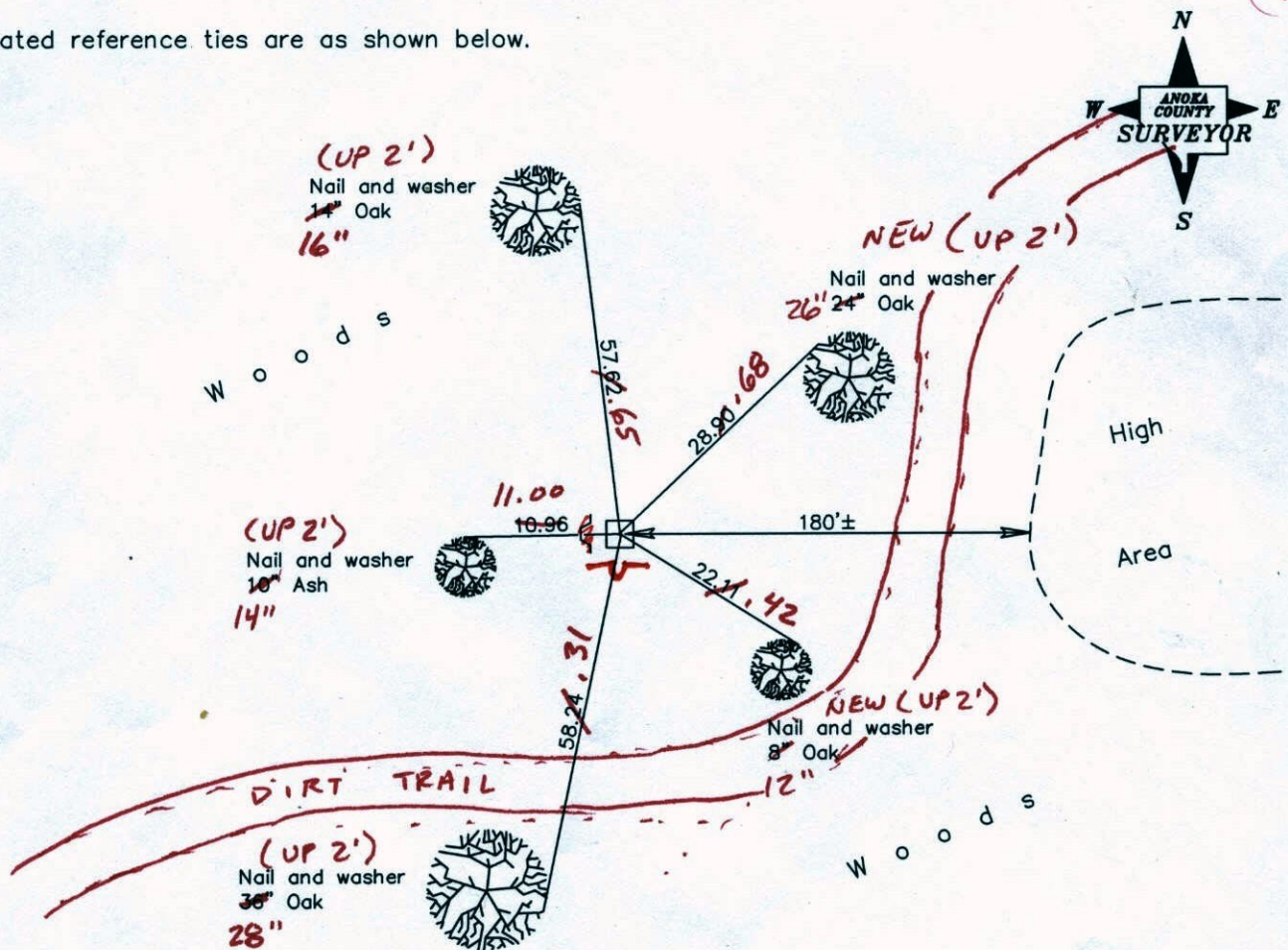
(MON. UP 0.2' ±)

SIGN & POST 8' ± NW OF MON.

* NEEDS TO BE MOVED

AND on the ___ day of _____, _____, said permanent marker was MOVED SIGN & POST NEXT TO MON. FACING NORTH (4/5/12)

Updated reference ties are as shown below.



2-9-12
BK-SS
TAPED

Revised date
10/26/98

N.A.D. 1983 Coordinates (1996 Adjustment)	
County Project Coordinates	
Northing	209263.7188
Easting	473946.6120
Date	3/19/02

I hereby certify that this United States public land survey monument record is correct and complete to the best of my knowledge and belief.

_____ Date _____

_____, Anoka County Surveyor

Minnesota License Number _____

CERTIFICATE OF LOCATION OF GOVERNMENT CORNER

County of Anoka

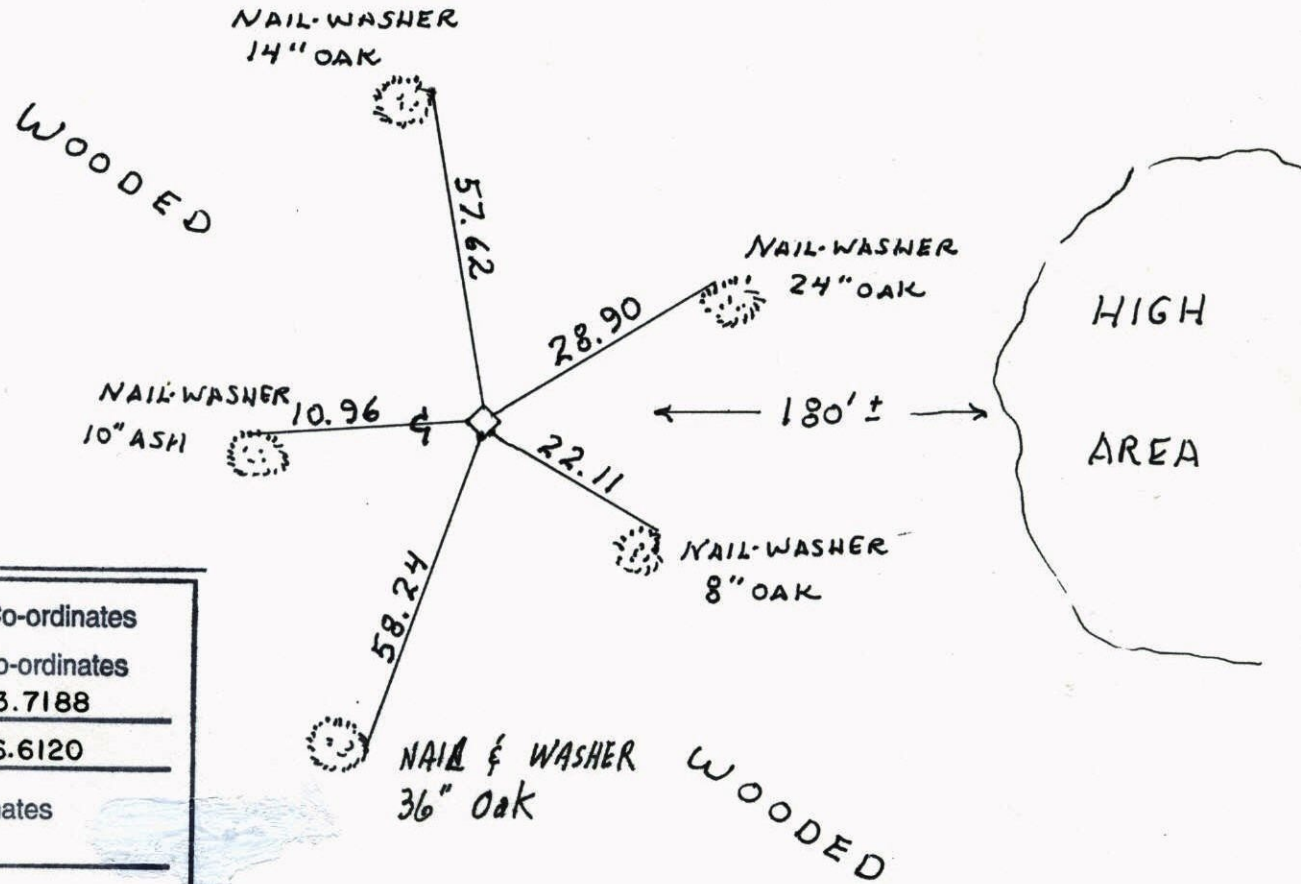
State of Minnesota

EAST QTR. Corner of Sec. 19 Township 33 Range 24

I hereby certify that on the 2 day of DEC., 1963, I found the described corner which was evidenced by 4" SQUARE CONC.

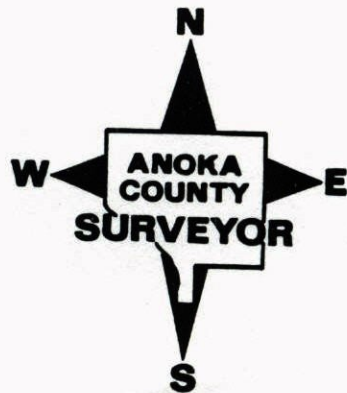
and I further certify that to perpetuate the location of said corner, I did, at the exact location thereof, place a permanent marker consisting of CONCRETE MONUMENT WITH SIGN AND POST ON WEST SIDE

which reference or witness monuments are located in the manner following:



N.A.D.	1983	Co-ordinates
County	Project	Co-ordinates
Northing	<u>209263.7188</u>	
Easting	<u>473946.6120</u>	
State Plane Co-ordinates		
Y	_____	
X	_____	
Date	_____	

Revised date	Revised date	Revised date
<u>10-26-98</u>		



E
 W 1/4 COR SEC 20 T33 R24

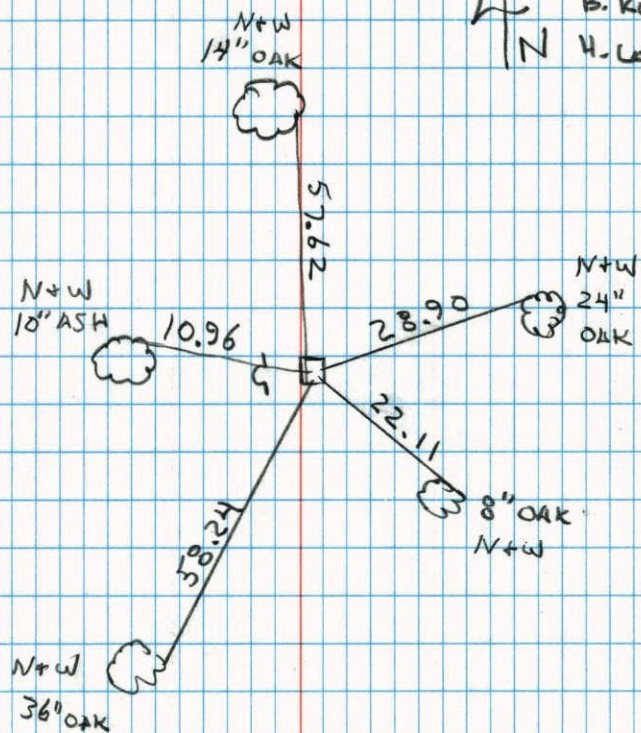
FOUND & RETIED CONK. MON.
 SIGN & POST ON WEST SIDE

10-26-98

J. SIMMER

B. KLEMZ

N. H. LARSON



EAST 1/4 CORNER SEC. 19 T33 R24

RETIED CONCRETE MONUMENT. PLACED
 SIGHT POST ON SOUTH SIDE.

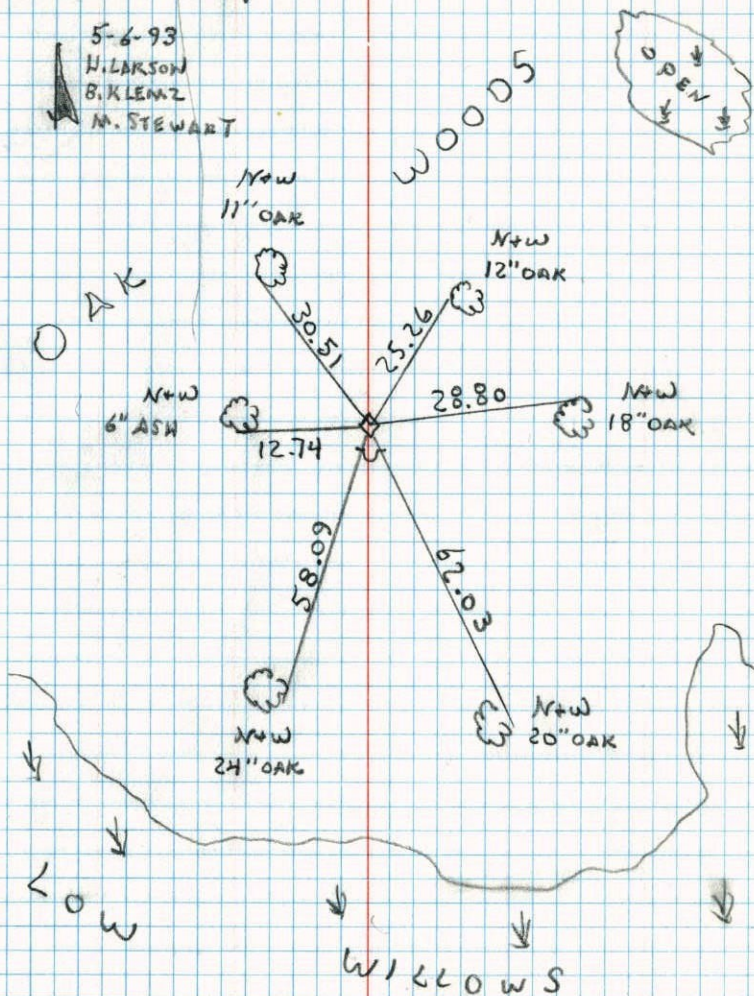
CONCRETE UP .2'

5-6-93

H. LARSON

B. KLEMZ

M. STEWART

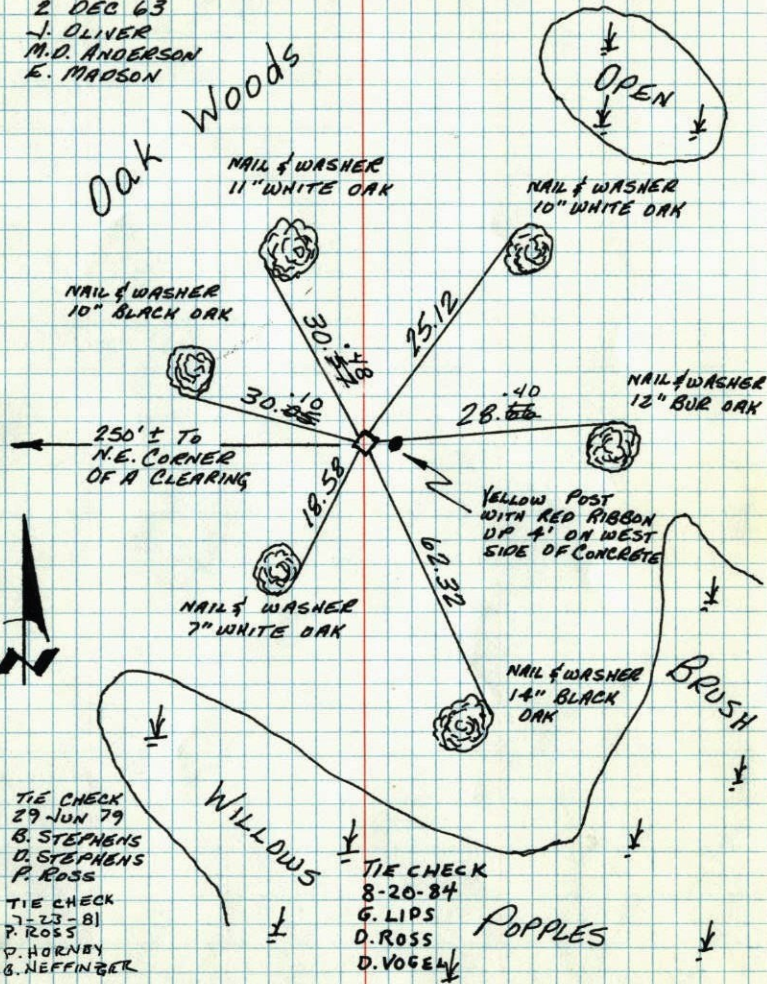


E 1/4 CORNER SECTION 19-T33-R24

FOUND 4" SQUARE CONCRETE MONUMENT. 1 1/2" WELL.
POINT STICKS UP 1' ON WEST SIDE OF CONCRETE. X'S
CARVED IN THE NEAR FACE OF ALL TIE TREES.

2 DEC 63

J. OLIVER
M.D. ANDERSON
E. MADSON



TIE CHECK
29-JUN 79
B. STEPHENS
D. STEPHENS
P. ROSS

TIE CHECK
7-23-81
P. ROSS
P. HORNBY
G. NEFFINBER

TEMPERATURE CORRECTED
AND HORIZONTALLY
TAPED MEASUREMENTS

ROLAND W. ANDERSON
COUNTY SURVEYOR
ANOKA COUNTY, MINNESOTA.

FOUND!!

E 1/4 Cor. Sec. 19, T33, R24

Found 4" Sq. Concrete Monument. 1 1/2" Well
point sticks up 1' on west side of Concrete.

Nails and Washers asties, and carved "X's" in
the near face of all tie trees.

6-27-79

B. Stephens

D. Stephens

P. Ross

950

1 year #2

2 Dec. 63

J. Oliver
M.D. Anderson
E. Madson



Tie check
Sept. 7 1965
H. Larson
J. Dunlop

Tie Check
Aug 9 1971
R. Brien
J. Boettcher
B. Olson

Tie Check
July 1 1968
H. Larson
R. Olson
P. Pieh

TEMPERATURE CORRECTED
AND HORIZONTALLY
TAPED MEASUREMENTS

ROLAND W. ANDERSON
COUNTY SURVEYOR
ANOKA COUNTY, MINNESOTA.

Enjoy and have fun
8/11

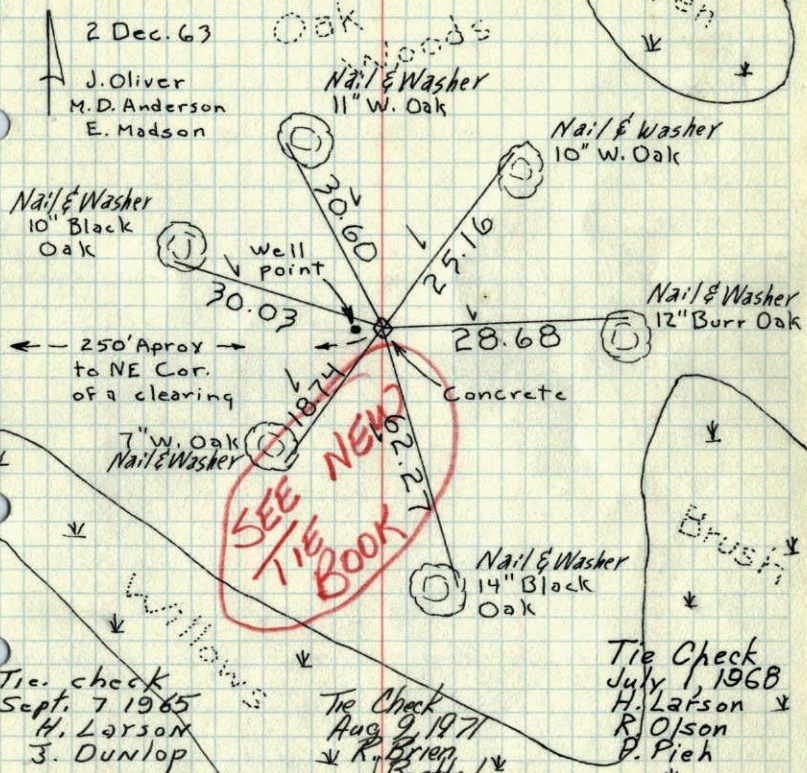
E 1/4 Cor. Sec. 19, T33, R24

Found 4" Sq. Concrete Monument. 1 1/2" Well point sticks up 1' on west side of Concrete.
Nails and Washers asties, and carved "X"s in the near face of all tie trees.

N

2 Dec. 63

J. Oliver
M.D. Anderson
E. Madson



TEMPERATURE CORRECTED
AND HORIZONTALLY
TAPED MEASUREMENTS

ROLAND W. ANDERSON
COUNTY SURVEYOR
ANOKA COUNTY, MINNESOTA

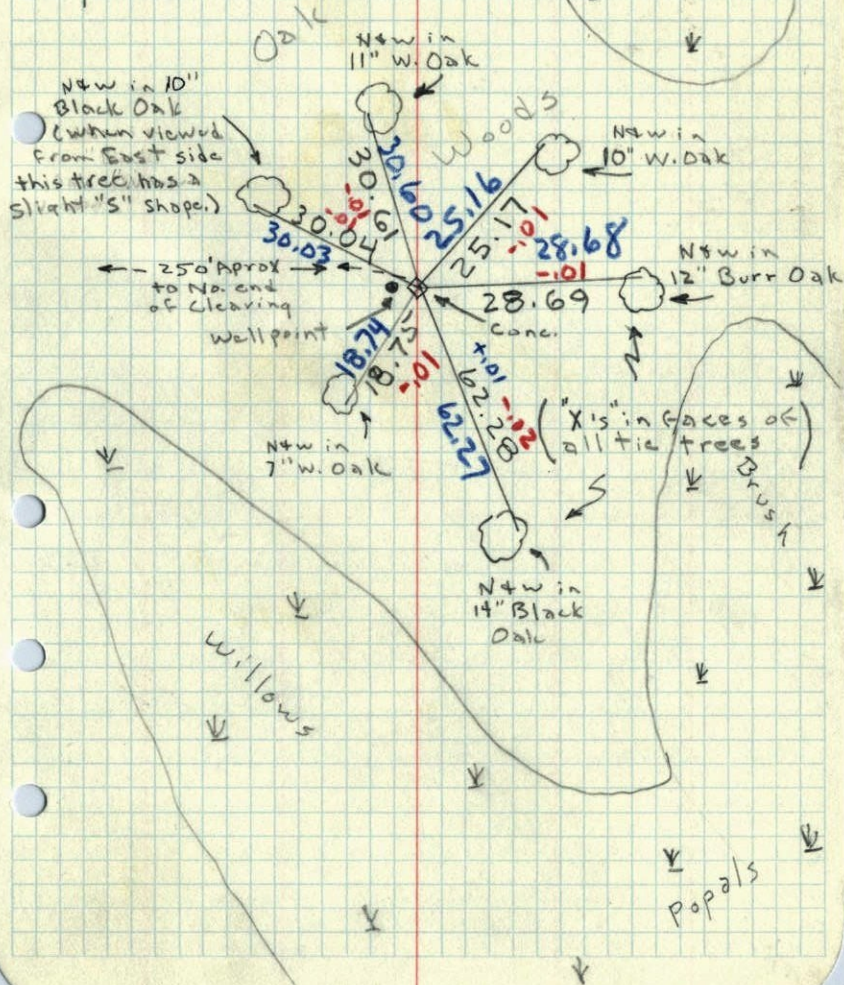
E 1/4 Sec. 19, T33, R24

Found 4" Sq. Conc. Mon. down 0.3'.

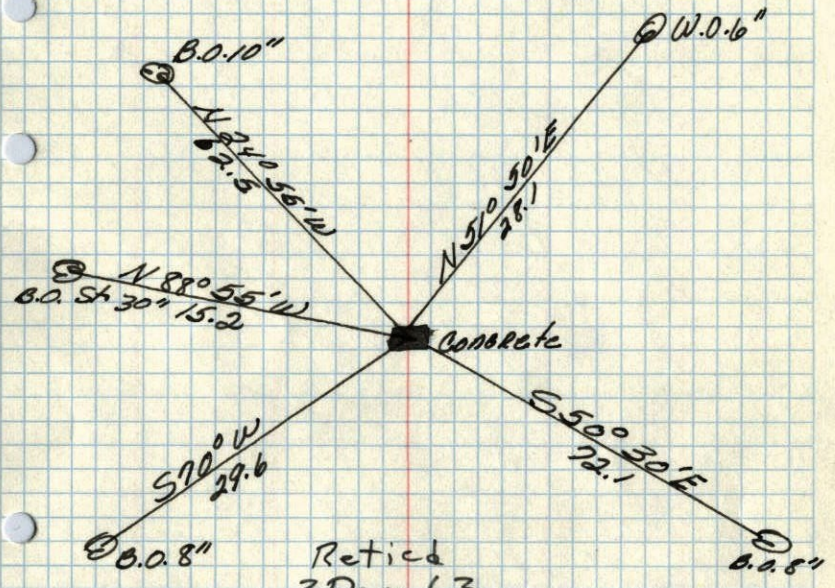
1 1/2" Well point Sticking up 1' on West Side.

N 2 Dec. 63
24 #2
J. Oliver
M.D. Anderson
E. Madson

(Dug Pit around
Conc. so that
it is exposed.)



E 1/4 corner of Sec. 19 + 33 R24
Concrete Monument



Retied
3 Dec 63

Mar. 27, 1944
Cartwright