

CERTIFICATE OF LOCATION OF GOVERNMENT CORNER

County of Anoka

State of Minnesota

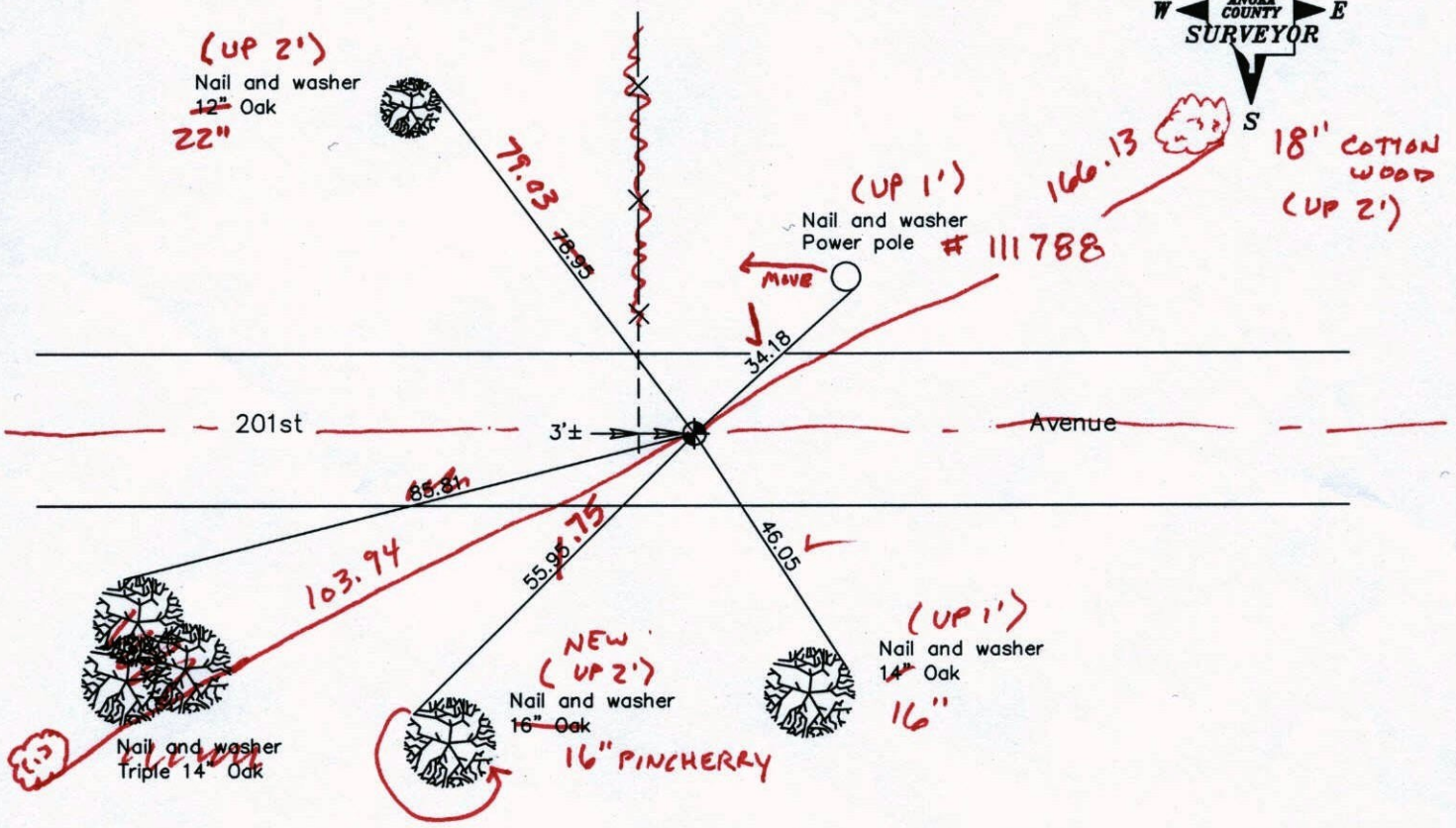
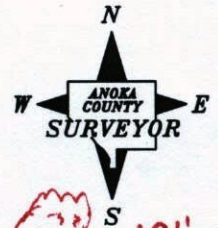
West 1/4 Corner of Sec. 22 Township 33 Range 24

On the 29th day of June, 1960, the described corner was evidenced by a concrete monument

and to perpetuate the location of said corner, at the exact location thereof, a permanent marker was placed consisting of a cast iron monument (ON E)

AND on the ___ day of _____, _____, said permanent marker was _____

Updated reference ties are as shown below.



12" OAK
(UP 2')

2-2-12
BK-SS T/T - VRS

Revised date
8/17/94
5/27/97
4/18/01

N.A.D. 1983 Coordinates (1996 Adjustment)	
County Project Coordinates	
Northing	<u>209024.2553</u>
Easting	<u>484513.8228</u>
Date	<u>4/18/01</u>

I hereby certify that this United States public land survey monument record is correct and complete to the best of my knowledge and belief.

Date _____
_____, Anoka County Surveyor
Minnesota License Number _____

VRS 3D = 0.04

N = 209024.2292

E = 484513.7731

CERTIFICATE OF LOCATION OF GOVERNMENT CORNER

County of Anoka

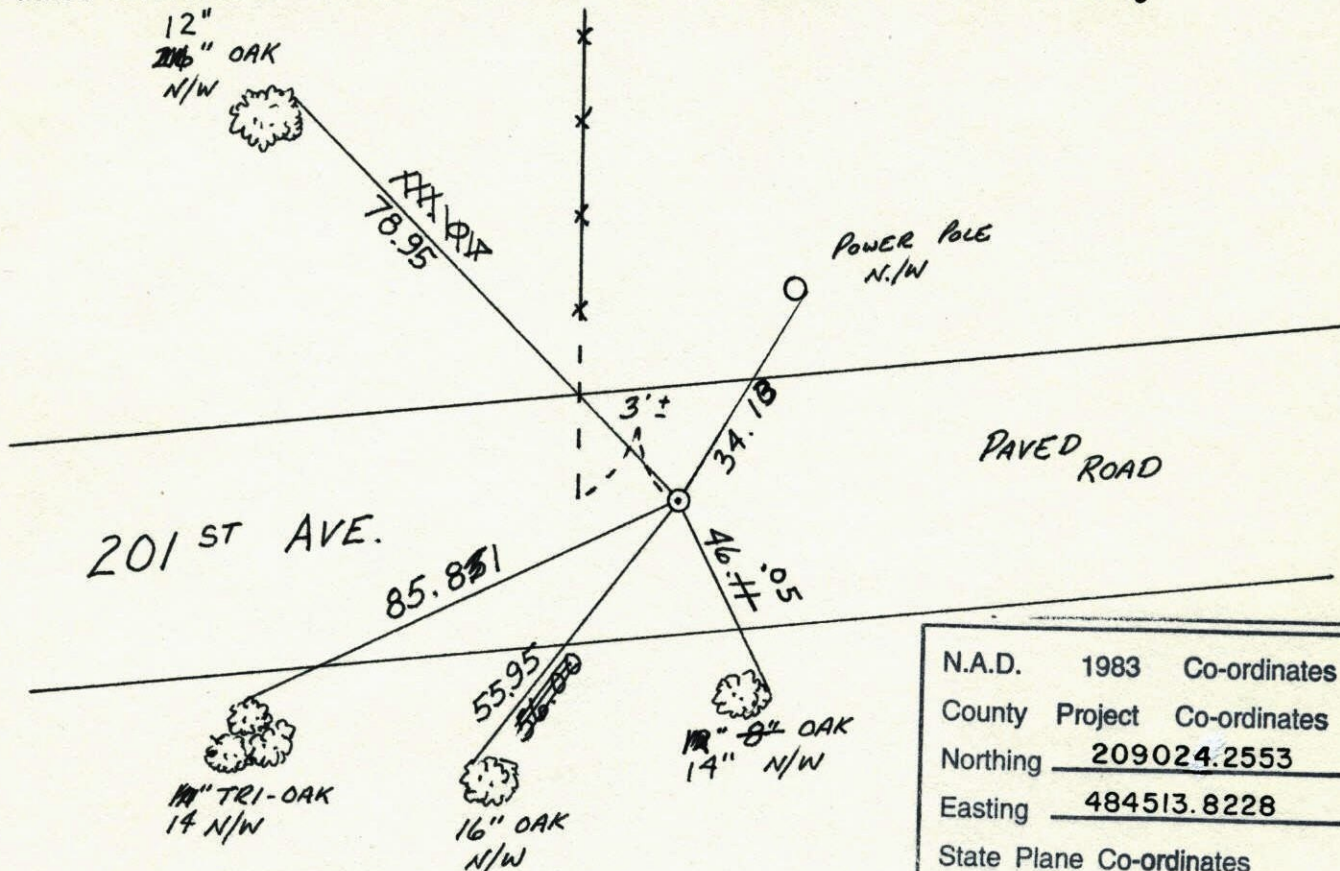
State of Minnesota

WEST QTR. Corner of Sec. 22 Township 33 Range 24

I hereby certify that on the 29 day of JUNE, 1960, I found the described corner which was evidenced by CONCRETE MON.

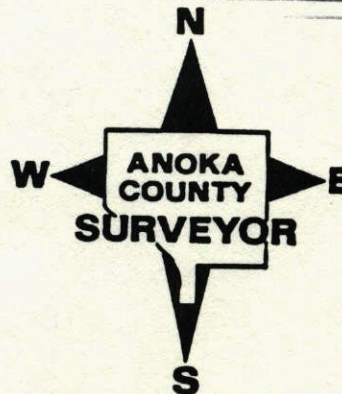
and I further certify that to perpetuate the location of said corner, I did, at the exact location thereof, place a permanent marker consisting of CAST IRON.

which reference or witness monuments are located in the manner following:



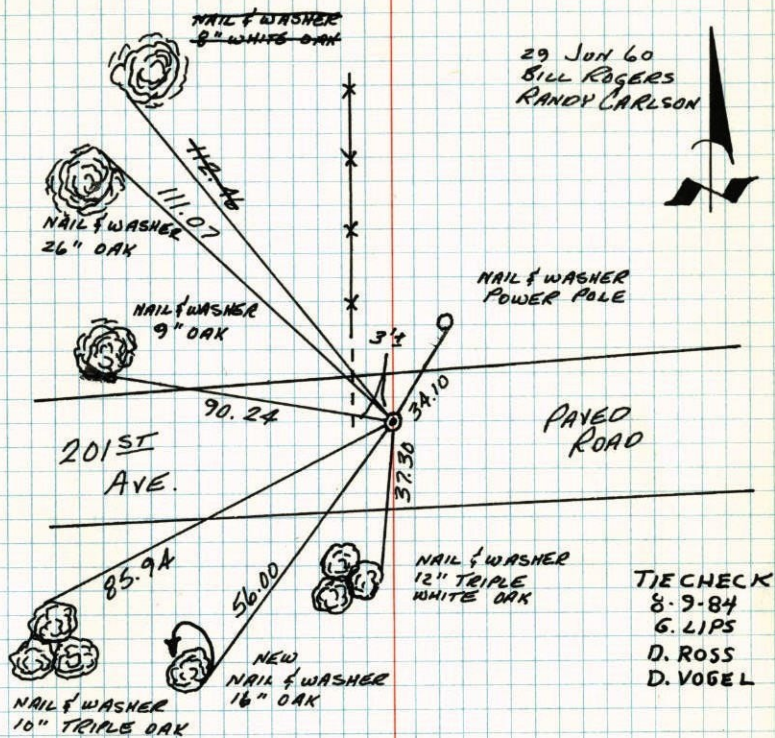
N.A.D.	1983	Co-ordinates
County	Project	Co-ordinates
Northing		<u>209024.2553</u>
Easting		<u>484513.8228</u>
State Plane Co-ordinates		
Y		_____
X		_____
Date _____		

Revised date	Revised date	Revised date
8-4-78	4-18-01	
7-22-81		
8-9-84		
7-17-87		
12-30-91		
RAISED 8-17-94 HL		
5-27-97		



W 1/4 CORNER SECTION 22-T33-R24

SET CAST IRON MONUMENT IN PLACE OF CONCRETE MONUMENT. PK'S 2.00' NORTH AND EAST.



29 JUN 60
BILL ROGERS
RANDY CARLSON

NAIL & WASHER
POWER POLE

TIE CHECK
8-9-84
G. LIPS
D. ROSS
D. VOGEL

NAIL & WASHER
12\"/>

NEW
NAIL & WASHER
16\"/>

TIE CHECK
8-4-78
P. DANL
M. KISROD
B. STEPHENS

TIE CHECK
7-22-81
P. ROSS
P. HORNBY
G. NEFFINGER

TEMPERATURE CORRECTED
AND HORIZONTALLY
TAPED MEASUREMENTS

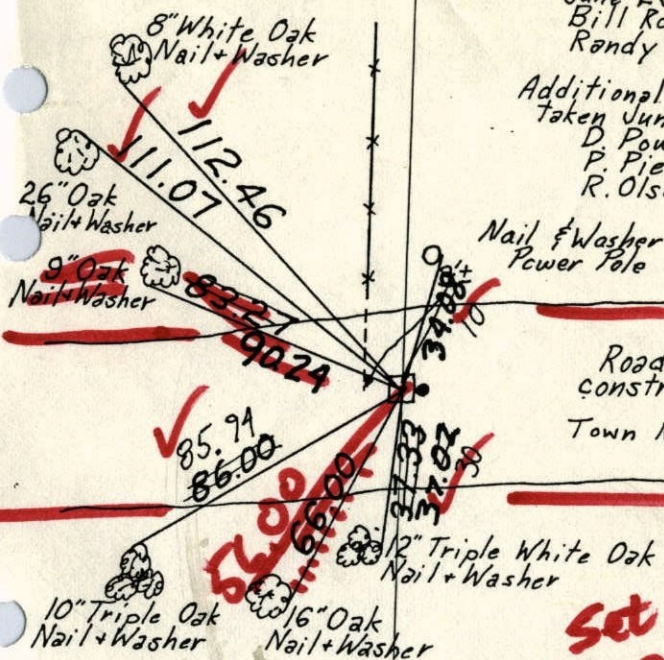
ROLAND W. ANDERSON
COUNTY SURVEYOR
ANOKA COUNTY, MINNESOTA

W 1/4 Cor. Sec. 22-T33-R24

Concrete Monument with iron axel on East side.

June 29, 1960
Bill Rogers
Randy Carlson

Additional ties
Taken June 26, 1968
D. Powell
P. Pieh
R. Olson



Nail & Washer
Power Pole

Road being
constructed
Town Road

paved road

found Concrete Mon. down
2.2' Set Broken Cast Iron
Mon. down .3'
July 23, 1971
R. Brien
J. Boettcher
B. Olson

Set C.I. this
with PK's 2.00' N/S

Tie Check
July 3, 1975
D. Dahl
B.S.
G.A.

8-4-78

D. Dahl
B. Stephen

#2
75°

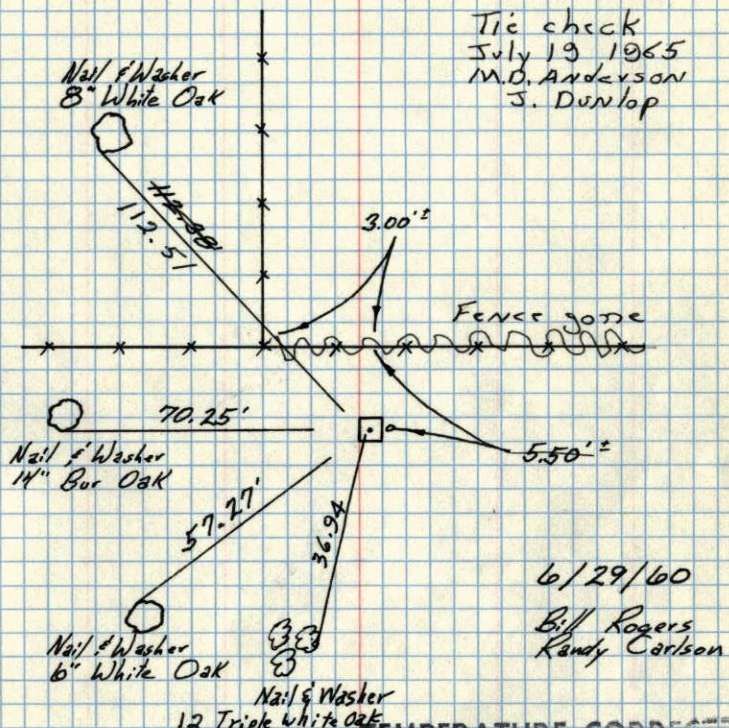
M. Kisrod

TEMPERATURE CORRECTED
AND HORIZONTALLY
TAPED MEASUREMENTS

ROLAND W. ANDERSON
COUNTY SURVEYOR
ANOKA COUNTY, MINNESOTA

34 46
W 1/4 Cor. Sec 22-T33-R24

Conc. Mon. Flush
Iron Axel on E. Side



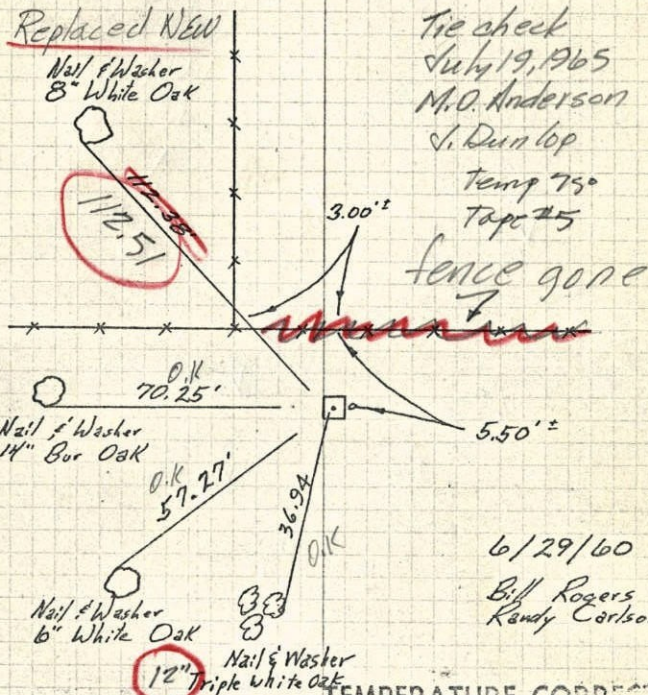
TEMPERATURE CORP.
AND HORIZONTALLY
TAPED MEASUREMENTS

ROLAND W. ANDERSON
COUNTY SURVEYOR
ANOKA COUNTY, MINNESOTA

46

W 1/4 Cor. Sec 22-T33-R24

Conc. Mon. Flush
Iron Axel on E. Side

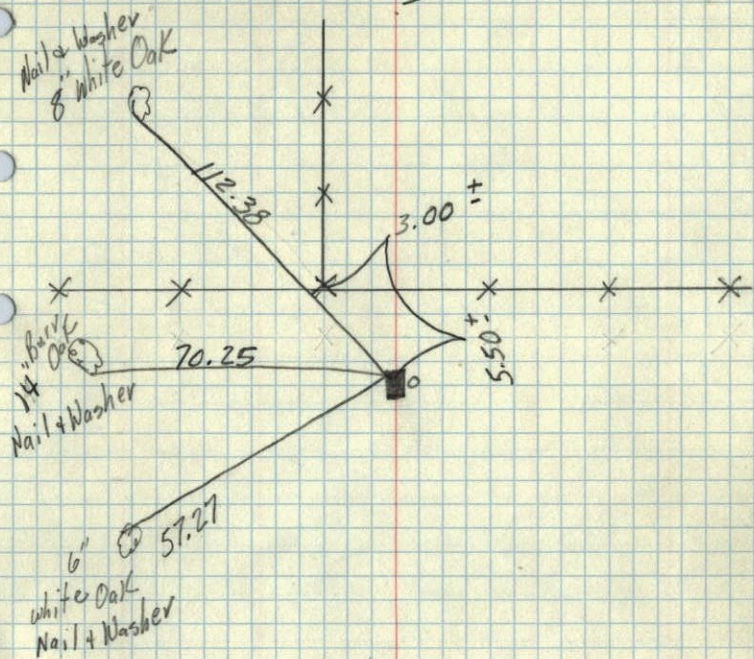


TEMPERATURE CORP.
AND HORIZONTALLY
TAPED MEASUREMENTS

ROLAND W. ANDERSON
COUNTY SURVEYOR
ANOKA COUNTY, MINNESOTA

Entered
H.L.

W 1/4 Cor. of Sec. 22 T33 R24
 Conv. Mon. flush Iron Axel on E. Side



9/10/60

TC
 temp. 77°
 6/29/60
 Bill Rogers
 Randy Carlson

W
 E 1/4 Corn. Sec. 22, T33, R24

22 A
 4/30/59

Wayne Ridge said he knew of something at this corner

