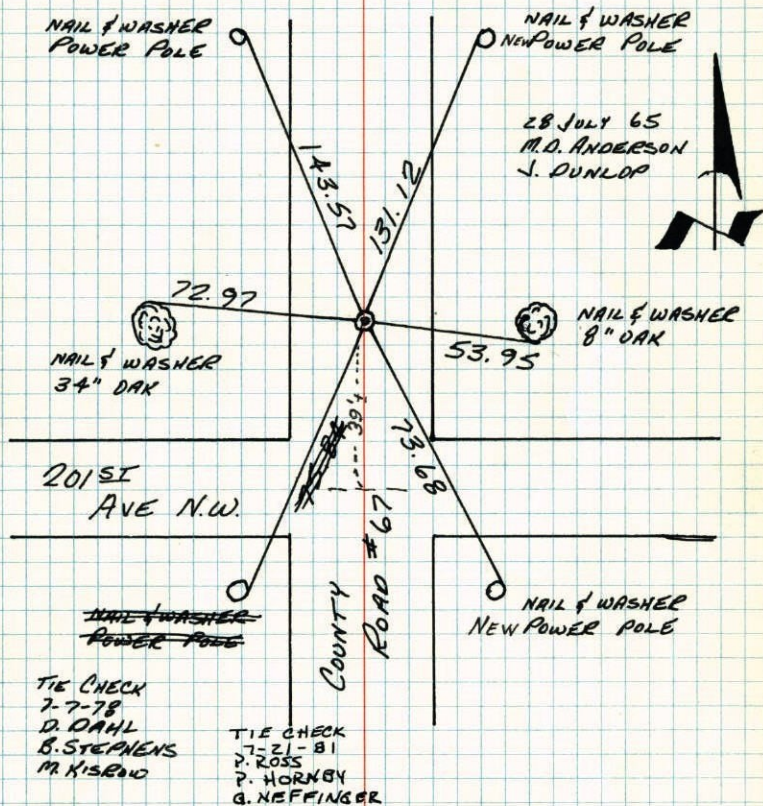


Not True Center
3/4/75 RWA

88

CENTER SECTION 22 - T33 - R24

FOUND 6" SQUARE GRANITE MONUMENT DOWN 1.6'± FROM 1960 TIES FROM THIS OFFICE. (JULY 28, 1965) SET CAST IRON MONUMENT IN PLACE OF GRANITE. (JUNE 26, 1968) SUBURBAN ENGINEERING STATES GRANITE IS 8.3' WEST AND 0.5' NORTH OF INTERSECTION OF QUARTER LINES. MEYER-ROHLIN SAYS 8.17' WEST AND 0.61' NORTH IN 1975.



TEMPERATURE CORRECTED
AND HORIZONTALLY
TAPED MEASUREMENTS

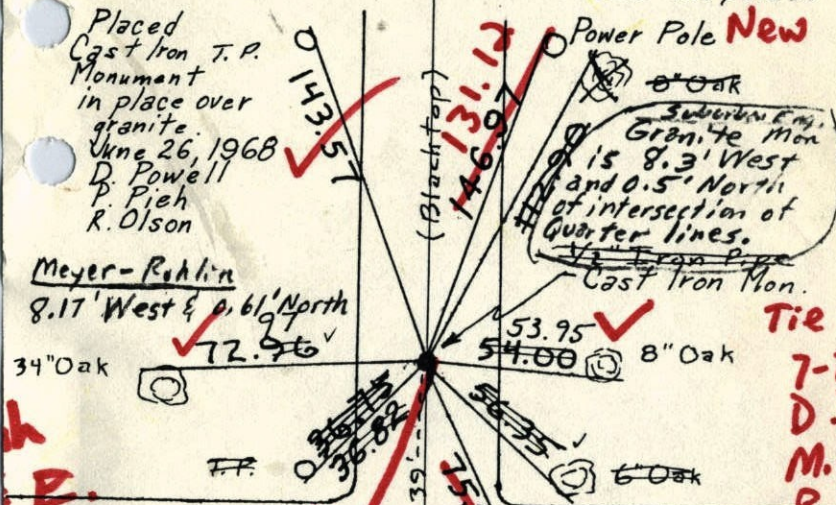
ROLAND W. ANDERSON
COUNTY SURVEYOR
ANOKA COUNTY, MINNESOTA

Not a true Center 3/4/75 R.W.A. 88 Center Sec. 22, T33, R24

Found 6" Sq. Granite Mon. down 1.6'± From 1960 ties From this office. Placed 1/2" Iron Pipe Flush over top center of Granite.

Nails and Washers in all tie trees and poles.

Placed Cast Iron T.P. Monument in place over granite. June 26, 1968 D. Powell P. Pieh R. Olson



Meyer-Rohlin
8.17' West & 0.61' North

Town Rd. (Dirt) #2

N.P.P. N.E.W.
July 28, 1965
M.D. Anderson
J. Dunlop

Tie Check
July 7 1975
D. Dahl B.S. G.A.

TEMPERATURE CORRECTED;
AND HORIZONTALLY
TAPED MEASUREMENTS

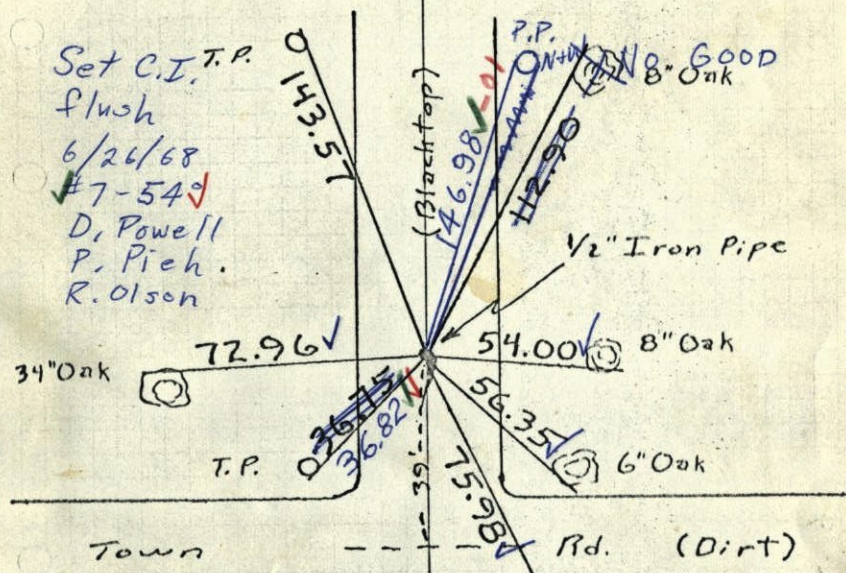
Tie Check
July 23 1971
R. Brien
J. Boettcher
B. Olson

AND W. ANDERSON
COUNTY SURVEYOR
ANOKA COUNTY, MINNESOTA

Tie Chec
7-7-78
D. Dahl
M. Kisin
B. Steph
#2
76

Center Sec. 22, T33, R24

Found 6" Sq. Granite Mon. down 1.6' from 1960 ties From this office. Placed 1/2" Iron Pipe Flush over top center of Granite.
 Nails and Washers in all tie trees and poles.



Set C.I. T.P. flush 6/26/68 #7-54 ✓
 D. Powell
 P. Pieh.
 R. Olson

July 28, 1965
 M. D. Anderson
 J. Dunlop

Tie Check July 23, 1971
 R. Brien
 V. Boettcher
 B. Olson

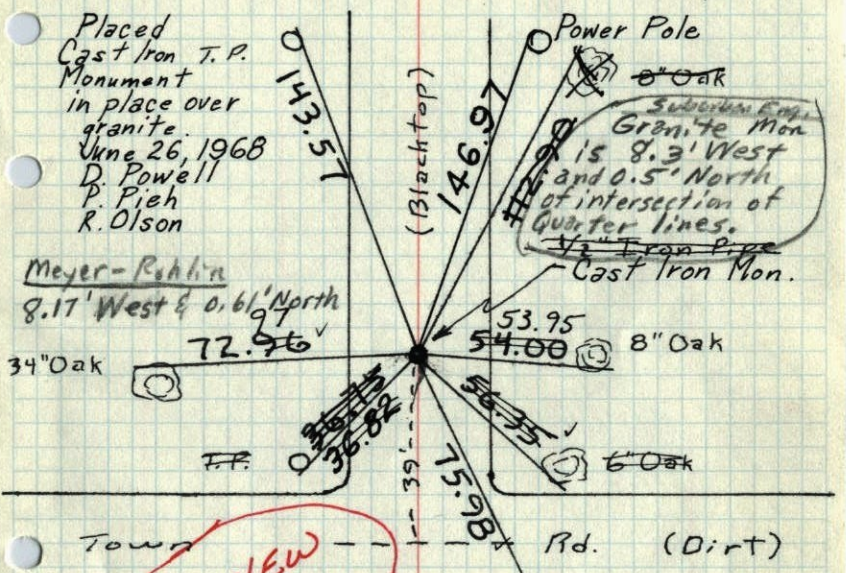
TEMPERATURE CORRECTED AND HORIZONTALLY TAPED MEASUREMENTS

ROLAND W. ANDERSON
 COUNTY SURVEYOR
 ANOKA COUNTY, MINNESOTA

Not a true Center 3/4/75 R.W.A.

Center Sec. 22, T33, R24

Found 6" Sq. Granite Mon. down 1.6' from 1960 ties From this office. Placed 1/2" Iron Pipe Flush over top center of Granite.
 Nails and Washers in all tie trees and poles.



Placed Cast Iron T.P. Monument in place over granite. June 26, 1968
 D. Powell
 P. Pieh
 R. Olson

Meyer-Ruhlin
 8.17' West & 0.61' North
 72.96 ✓
 34" Oak

SEE NEW TIE BOOK

July 28, 1965
 M. D. Anderson
 J. Dunlop

Tie Check July 7, 1975
 D. Dahl B.S. G.A.

TEMPERATURE CORRECTED AND HORIZONTALLY TAPED MEASUREMENTS

ROLAND W. ANDERSON
 COUNTY SURVEYOR
 ANOKA COUNTY, MINNESOTA

Center Sec 22-T33-R24

found Granite Mon. (6"x6")

down 1.6'

found from Anoka Co. ties of

10/20/60

Placed 1/2 iron pipe over E

T.P. N&W

N&W

8" Oak N&W

34" Oak N&W

72.96

54.00

8" Oak N&W

T.P. N&W

36.75

56.35

6" Oak N&W

Town Rd dirt

39'±

Town Rd dirt

County Rd #67 Blacktop

P.P. N&W

July 28, 1965

M. D. Anderson

J. Dunlop

Temp. 78°

Tap # 5

47

Center Section 22, T33, R24

6" x 6" Granite

Down .5'

Nail & Washer 6" Burr Oak

~~GONE~~
SW Corner Horse

112.90

96.35

96.25

Nail & Washer

32" Burr Oak

72.97

Nail & Washer 7" Burr Oak

53.99

54.00

N & Disc 36" Oak

72.3

May 3, 1957

Co. Hwy. Dept.

TOOK NEW TIES
M.D.A.
J.D. 2/28/1965

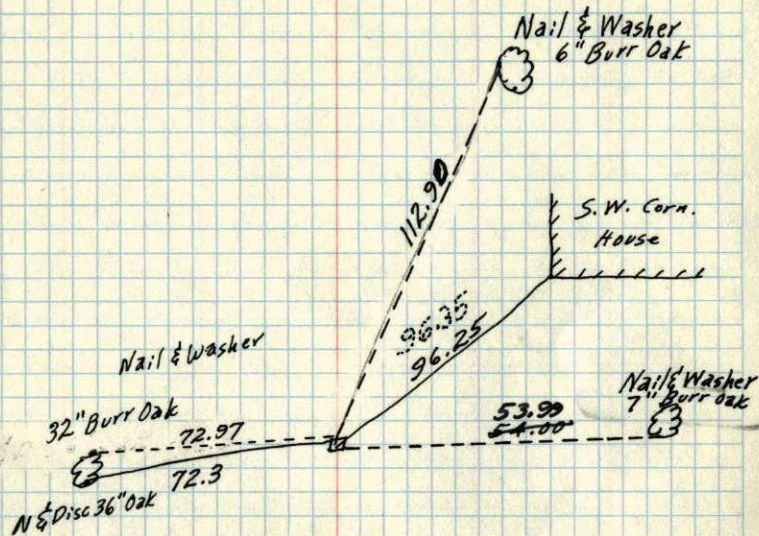
Co. Surveyor

10/20/60

ROLAND W. ANDERSON
COUNTY SURVEYOR
ANOKA COUNTY, MINNESOTA

Center Section 22, T33, R24

6" x 6" Granite
Down .5'

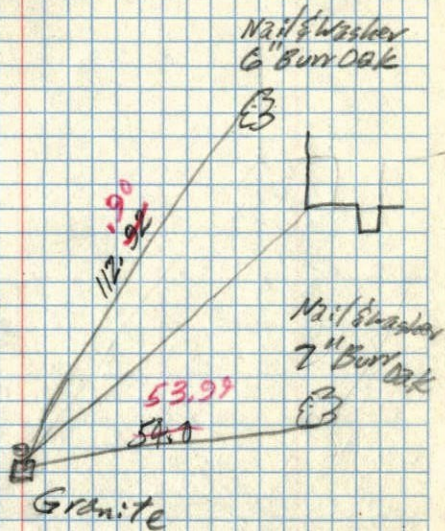


May 3, 1957
Co. Hwy. Dept.

Co. Surveyor
10/20/60

ROLAND W. ANDERSON
COUNTY SURVEYOR
ANOKA COUNTY, MINNESOTA

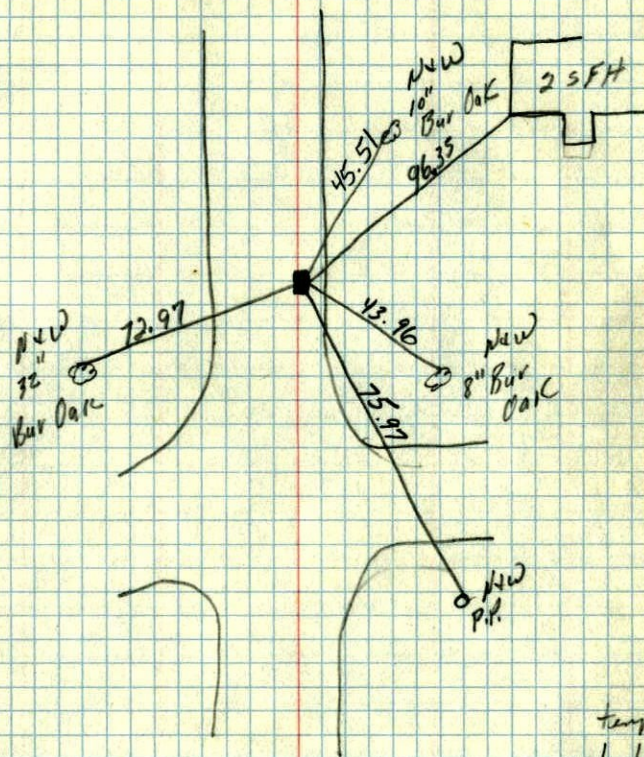
Center Section 22, T33, R24



P.P.
10/20/60
R. Anderson
D. Potter
35°

Temp. Cor.

Center Sec. 20 733 R24,
Grainite down 6"



Temp
10/11/60
B. H. Rogers
Jimmy Potter