

CERTIFICATE OF LOCATION OF GOVERNMENT CORNER

County of Anoka

State of Minnesota

East 1/16 Corner of Sec. 21 Township 33 Range 24

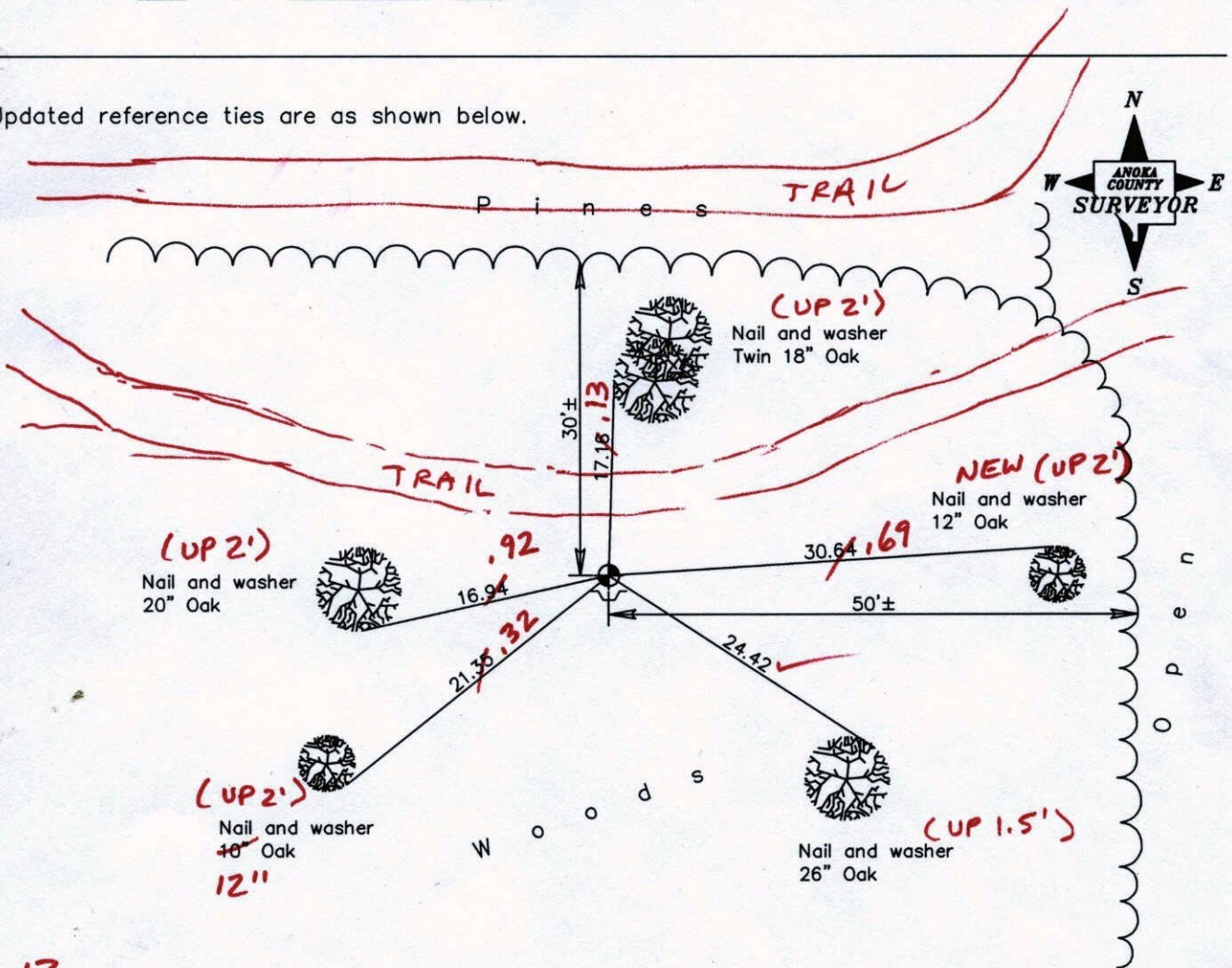
(on east line of SE1/4)

On the 24th day of April, 1973, the described corner was evidenced by area resurvey

and to perpetuate the location of said corner, at the exact location thereof, a permanent marker was placed consisting of a cast iron monument with a sign and post on the south side

AND on the ___ day of _____, _____, said permanent marker was _____

Updated reference ties are as shown below.



2-1-12
BK-SS
TAPED

Revised date

5/04/93
7/09/97
2/21/02

N.A.D. 1983 Coordinates
(1996 Adjustment)

County Project Coordinates

Northing	<u>207709.2353</u>
Easting	<u>484500.4897</u>
Date	<u>2/21/02</u>

I hereby certify that this United States public land survey monument record is correct and complete to the best of my knowledge and belief.

Date _____
_____, Anoka County Surveyor
Minnesota License Number _____

CERTIFICATE OF LOCATION OF GOVERNMENT CORNER

County of Anoka

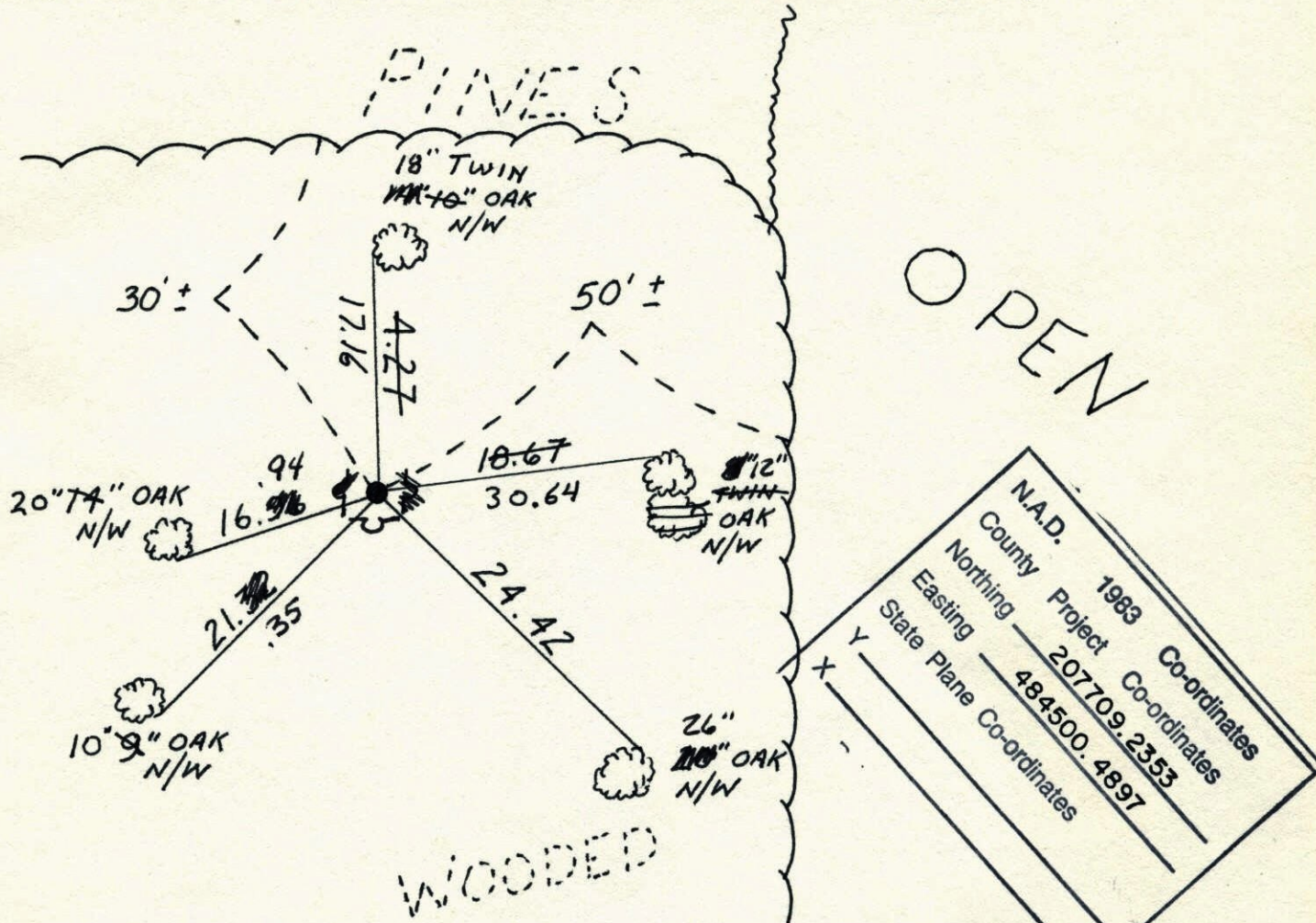
State of Minnesota

EAST 16TH Corner of Sec. 21 Township 33 Range 24
ON S.E. QTR.

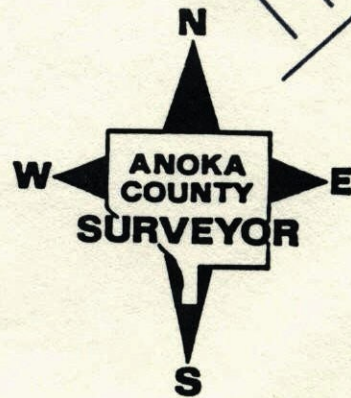
I hereby certify that on the 24 day of APRIL, 1973, I found the described corner which was evidenced by AREA RESURVEY

and I further certify that to perpetuate the location of said corner, I did, at the exact location thereof, place a permanent marker consisting of CAST IRON MON. SIGN AND POST ON ~~VARIABLE~~ SIDE

which reference or witness monuments are located in the manner following:



Revised date	Revised date	Revised date
7-9-75	2-21-02	
7-11-78		
7-27-81		
8-17-84		
7-31-87		
5-4-93 ^{HL}		
7-9-97		



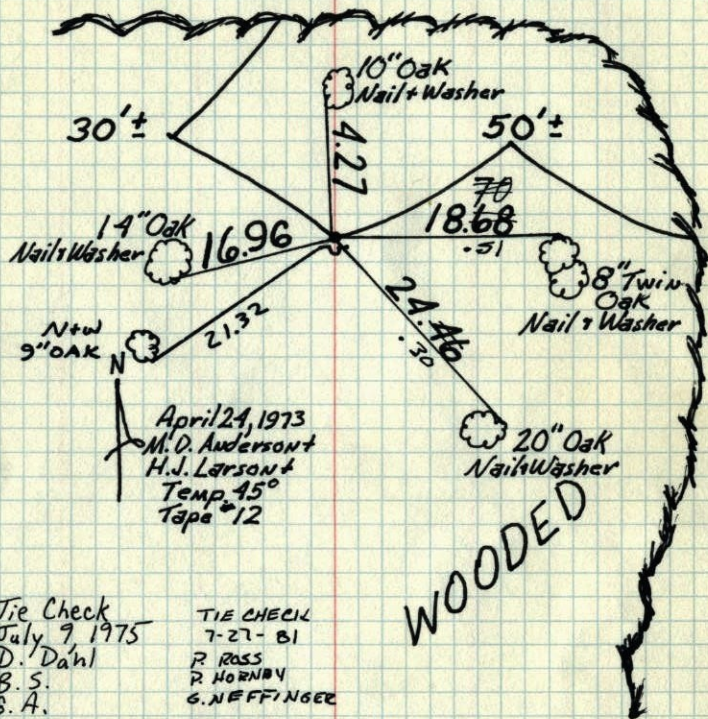
1/4 Cor. E. Wit. Cor.

97

E. 1/4 Cor. S.E. 1/4 Sec. 21-T33-R24

Set Cast Iron Mon. from area resurvey
Set Steel sign post with warning sign
1 1/2 S. of Monument

PINES



TIE CHECK
July 9, 1975
D. Dahl
B.S.
G.A.

TIE CHECK
7-27-81
R. ROSS
P. HORNBY
G. NEFFINGER

TIE CHECK
7-11-78
D. DAHL
B. STEPHENS
M. HISELOW

TIE CHECK
8-17-84
G. LIPS
D. ROSS
D. VOGEL

TEMPERATURE CORRECTED
AND HORIZONTALLY
TAPED MEASUREMENTS

ROLAND W. ANDERSON
COUNTY SURVEYOR
ANOKA COUNTY, MINNESOTA

1/4 Cor. E. W. C.

E. 1/4 Cor. S.E. 1/4 Sec. 21-T33-R24

Set Cast Iron Mon. from area resurvey
Set steel sign post with warning sign
1 1/2 S. of Mon.

PINES

