

# CERTIFICATE OF LOCATION OF GOVERNMENT CORNER

County of Anoka

State of Minnesota

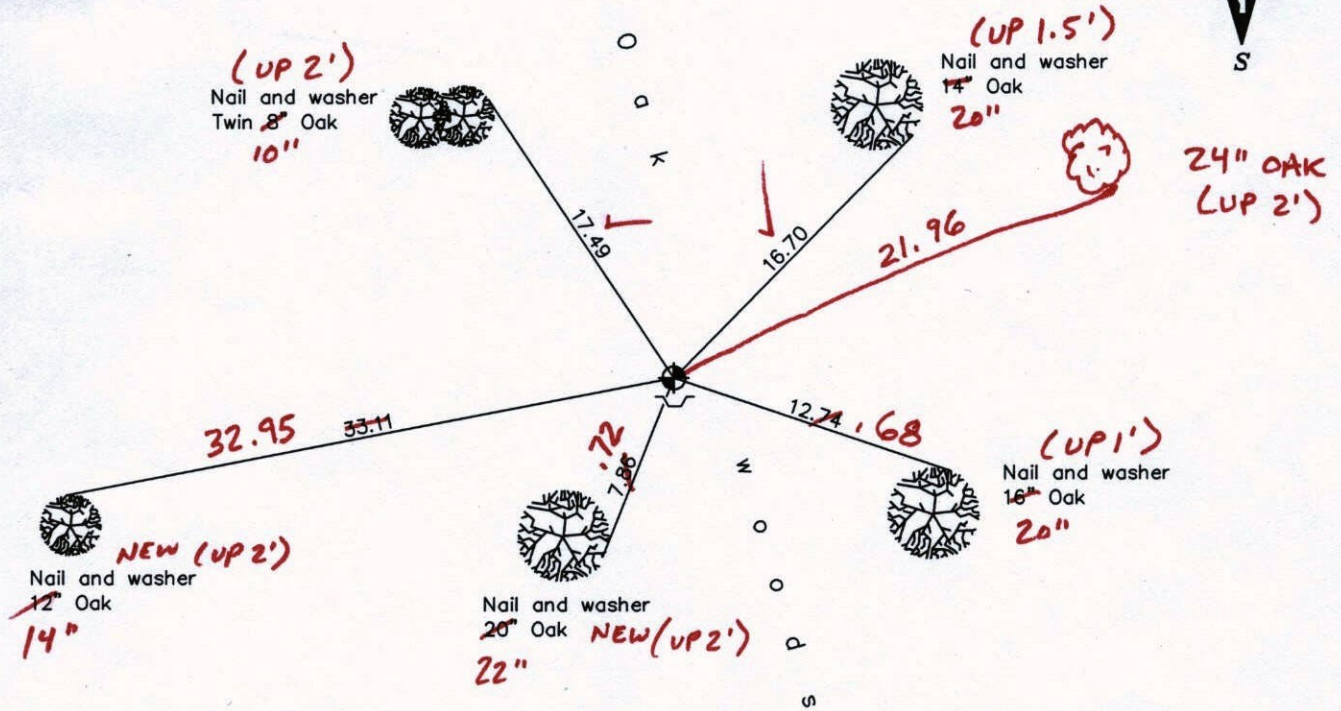
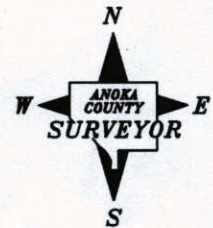
South  $\frac{1}{4}$  Corner of Sec. 21 Township 33 Range 24

On the 4th day of April, 1973, the described corner was evidenced by a sandstone monument

and to perpetuate the location of said corner, at the exact location thereof, a permanent marker was placed consisting of a cast iron monument with a sign and post on the south side

AND on the \_\_\_ day of \_\_\_\_\_, \_\_\_\_\_, said permanent marker was \_\_\_\_\_

Updated reference ties are as shown below.



2-13-12  
BK-SS  
TAPED

Revised date

5/07/93
7/07/97
2/21/02

N.A.D. 1983 Coordinates  
(1996 Adjustment)

County Project Coordinates

Northing	<u>206437.5915</u>
Easting	<u>481932.7765</u>
Date	<u>2/21/02</u>

I hereby certify that this United States public land survey monument record is correct and complete to the best of my knowledge and belief.

\_\_\_\_\_  
\_\_\_\_\_, Anoka County Surveyor  
Minnesota License Number \_\_\_\_\_



# CERTIFICATE OF LOCATION OF GOVERNMENT CORNER

County of Anoka

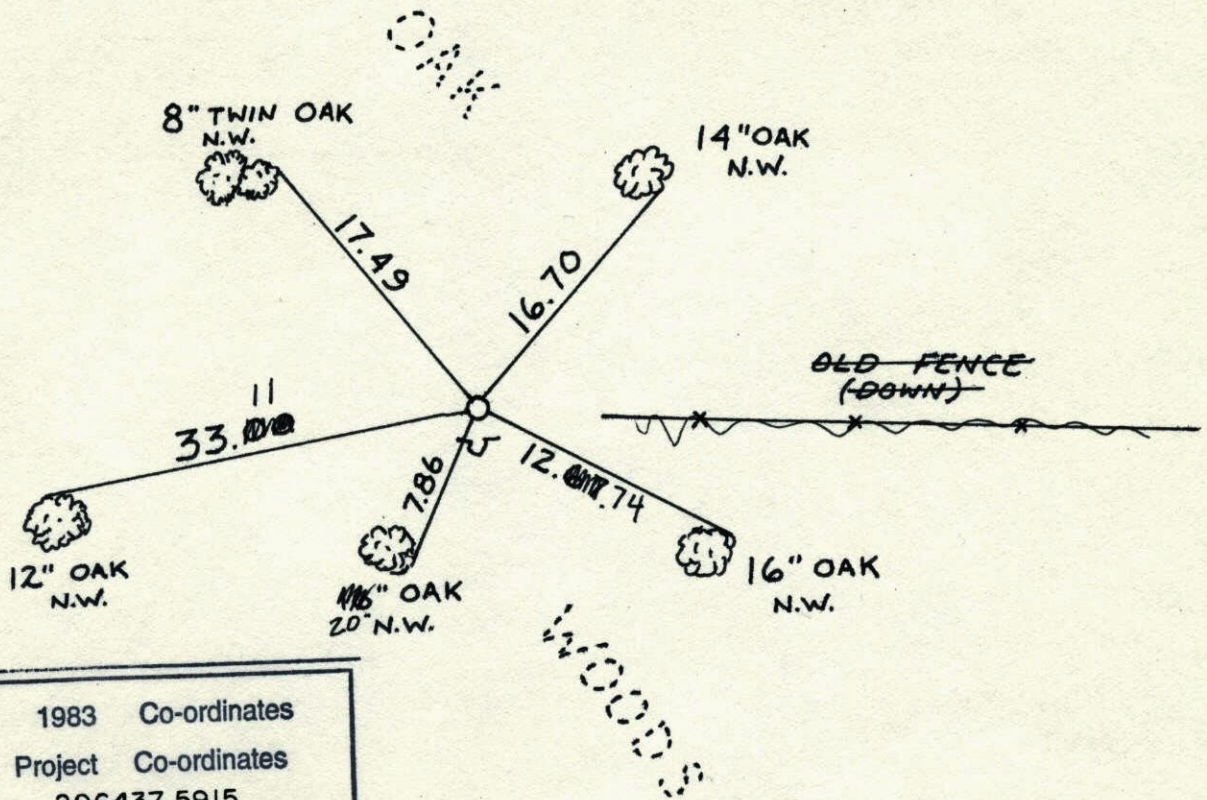
State of Minnesota

SOUTH QTR Corner of Sec. 21 Township 33 Range 24

I hereby certify that on the 4 day of APRIL, 19 73, I found the described corner which was evidenced by SANDSTONE

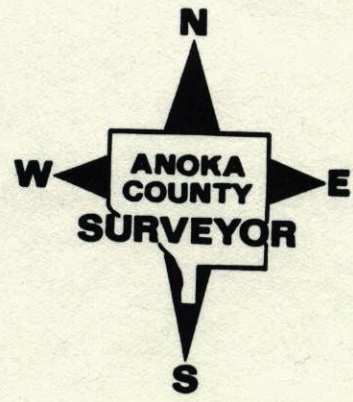
and I further certify that to perpetuate the location of said corner, I did, at the exact location thereof, place a permanent marker consisting of CAST IRON MONUMENT  
SIGN AND POST ON SOUTH SIDE

which reference or witness monuments are located in the manner following:



N.A.D.	1983	Co-ordinates
County	Project	Co-ordinates
Northing	<u>206437.5915</u>	
Easting	<u>481932.7765</u>	
State Plane Co-ordinates		
Y	_____	
X	_____	

Revised date	Revised date	Revised date
<u>7-31-87</u>		
<u>5-7-93</u>		
<u>7-7-97</u>		
<u>2-21-02</u>		

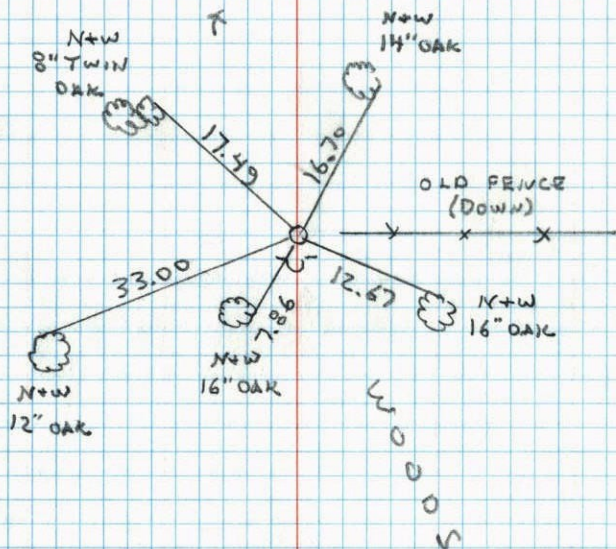




SOUTH 1/4 COR. SECTION 21 T33 R24

REPLACED SANDSTONE MON. WITH  
CAST IRON C.I. FLUSH WITH SIGN AND  
POST ON SOUTH SIDE.

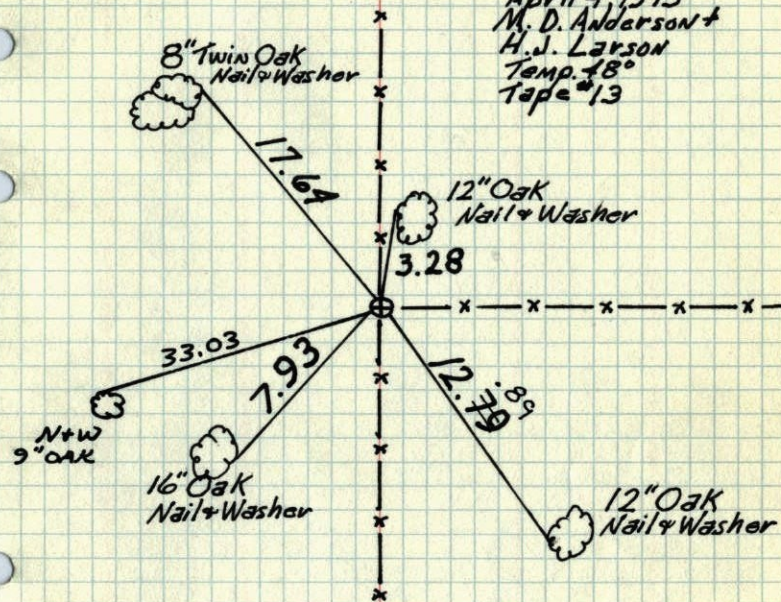
5-7-93  
W. LARSON  
B. KLEINZ  
M. STEWART



S 1/4 Cor. Sec. 21-T33-R24

found 6" x 12" x 1'6" Sandstone Monument on  
South side Cor. fence post "x" mark in Top Center  
Sandstone.

April 4, 1913  
M. D. Anderson +  
H. J. Larson  
Temp. 48°  
Tape #13



Possible Cor. until new trees are way

TIE CHECK  
7-11-78  
D. ORL  
B. STEPHENS  
M. KISROW

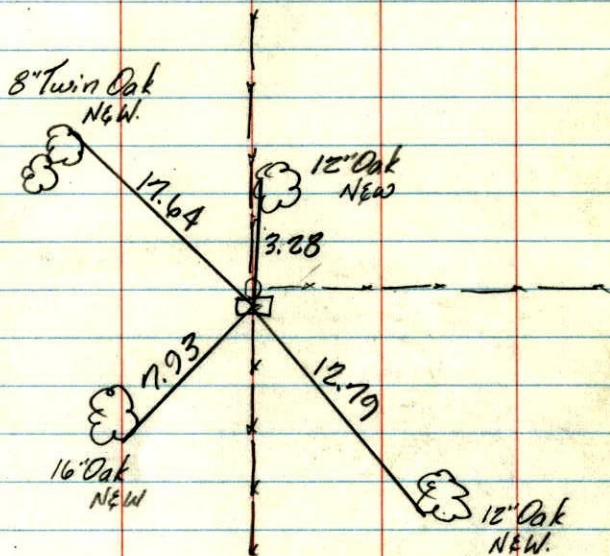
TIE CHECK  
7-28-81  
P. ROOS  
P. HOENBY  
G. NEFFINGER

TIE CHECK  
8-17-84  
G. LIPS  
D. ROSS  
D. VOGEL

TEMPERATURE CORRECTED ROLAND W. ANDERSON  
AND HORIZONTALLY COUNTY SURVEYOR  
TAPED MEASUREMENTS ANOKA COUNTY, MINNESOTA



S. 1/4 Cor. Sec. 21-T33-R24  
found 6" x 12" x 1'6" Sandstone Mon.  
on S. side Cor. fence post  
+ mark in Top Center Sandstone



Possible Cor. until Proven by Area resurvey

April 4, 1973  
M. D. Anderson +  
H. J. Larson +  
temp. 48°  
tape # 13

O.K.