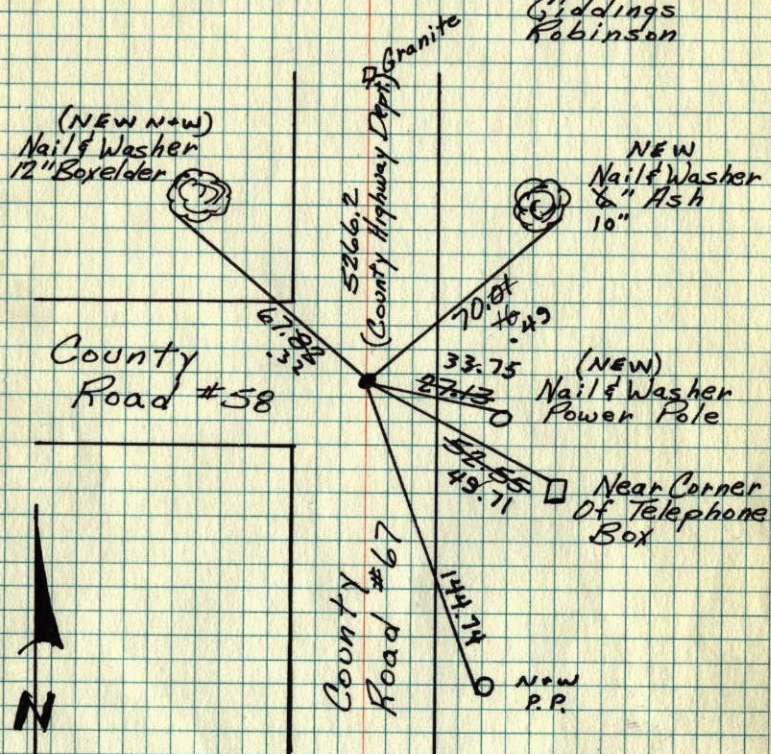


## S.E. Cor. Sec. 35-T33-R24

Replaced Iron Pipe With Cast Iron  
Monument Flush. PK's 2.00 N. & E.

July 14, 1960  
Giddings  
Robinson



Tie Check  
July 22, 1971  
R. Brien  
J. Boettcher  
B. Olson

TIE CHECK  
7-21-81  
D. ROSS  
G. NEEFINGER

TIE CHECK  
8-7-84  
G. LIPS  
D. ROSS  
D. VOGEL

Raised Cast Iron  
Tie Check  
July 16, 1975  
D. Dahl  
B. Sannerud  
G. Adams

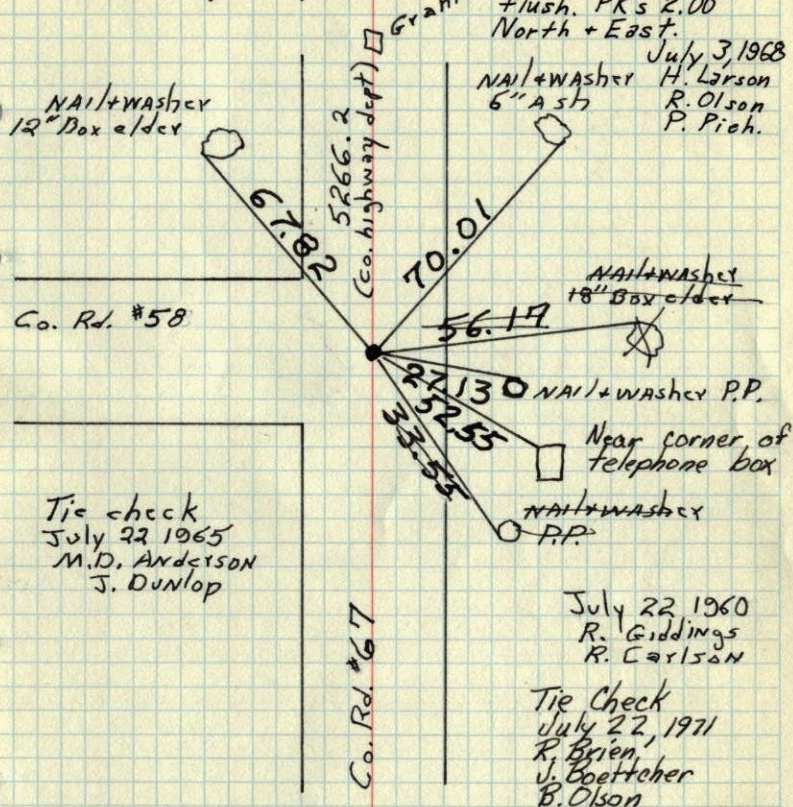
TEMPERATURE CORRECTED AND HORIZONTALLY TAPED MEASUREMENTS  
ROLAND W. ANDERSON  
COUNTY SURVEYOR  
ANOKA COUNTY, MINNESOTA

## S.E. Cor. Sec. 35 T33 R24

~~1/2" iron pipe over top. Flush in~~

~~black top. Replaced with~~ Cast Iron Monument  
Flush. PK's 2.00  
North + East.

July 3, 1968  
H. Larson  
R. Olson  
P. Pich.



Tie check  
July 22 1965  
M.D. Anderson  
J. Dunlop

July 22 1960  
R. Giddings  
R. Carlson

Tie Check  
July 22, 1971  
R. Brien  
J. Boettcher  
B. Olson

TEMPERATURE CORRECTED  
AND HORIZONTALLY  
TAPED MEASUREMENTS

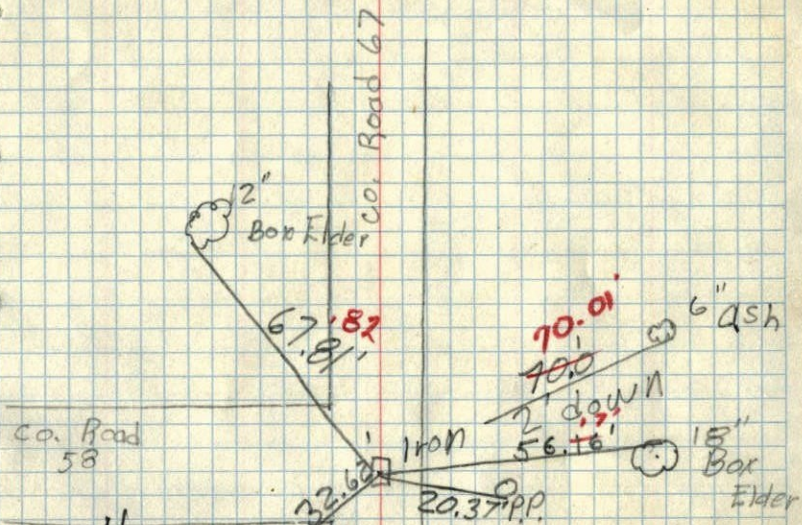
ROLAND W. ANDERSON  
COUNTY SURVEYOR  
ANOKA COUNTY, MINNESOTA





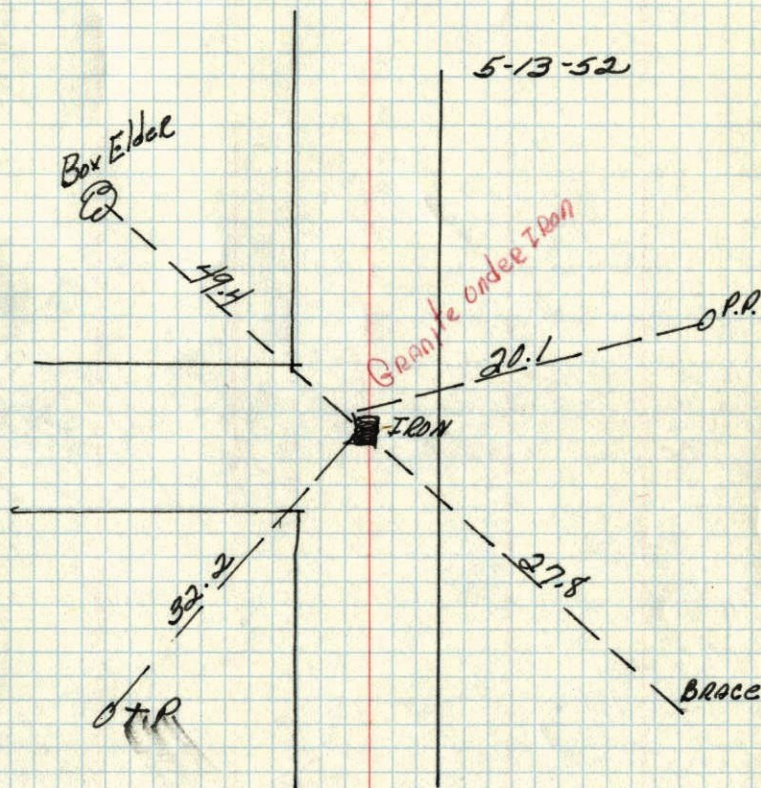


SE. Corn. Sec. 35, T. 33, R. 24  
(Oak Grove)



No Mon. For at least July 22, 1960  
7' down  
per Skip  
R. Giddings  
R. Carlson  
TC  
Granite Under Iron

SE corner of Sec. 35 T. 33 R. 24



Conc. Down 3 1/2 ft. Iron on top  
Put in stake on abrad. &  
Dug up by County Hwy. Dept  
6/60  
Crosby Co. Hwy. Dept  
5/13/52