

## W.C. on S. Line Sec. 8-T33-R24

West side of Rum River

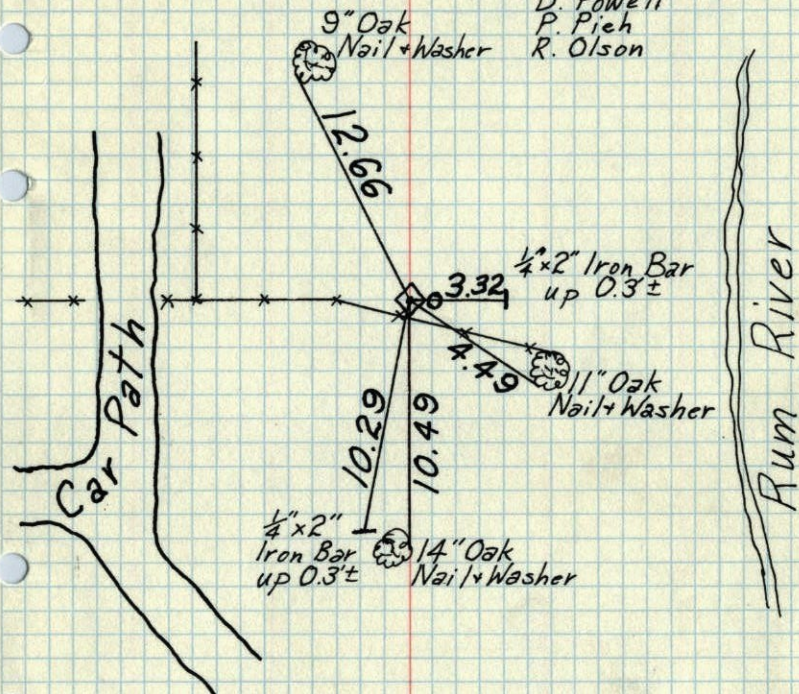
Found Concrete Monument up 0.3± with 1"  
Iron Pipe on East side.

June 24, 1968

D. Powell

P. Pieh

R. Olson



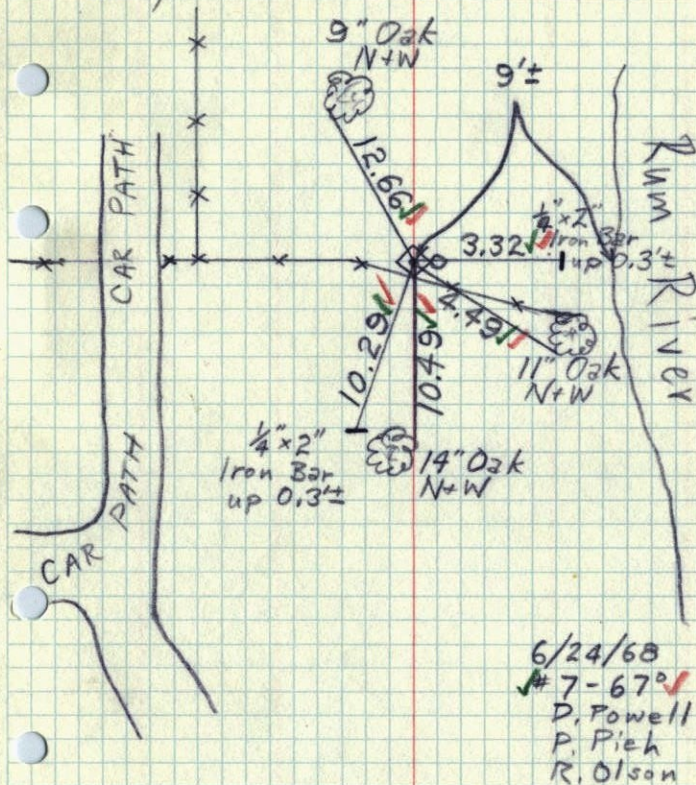
TEMPERATURE CORRECTED  
AND HORIZONTALLY  
TAPED MEASUREMENTS

ROLAND W. ANDERSON  
COUNTY SURVEYOR  
ANOKA COUNTY, MINNESOTA

## W.C. on S. line Sec. 8-T33-R24

West side of Rum River

Found Concrete Mon. up 0.3± with 1" Iron  
Pipe on East side



6/24/68  
#7-67  
D. Powell  
P. Pieh  
R. Olson

TEMPERATURE CORRECTED  
AND HORIZONTALLY  
TAPED MEASUREMENTS

ROLAND W. ANDERSON  
COUNTY SURVEYOR  
ANOKA COUNTY, MINNESOTA