

# CERTIFICATE OF LOCATION OF GOVERNMENT CORNER

County of Anoka

State of Minnesota

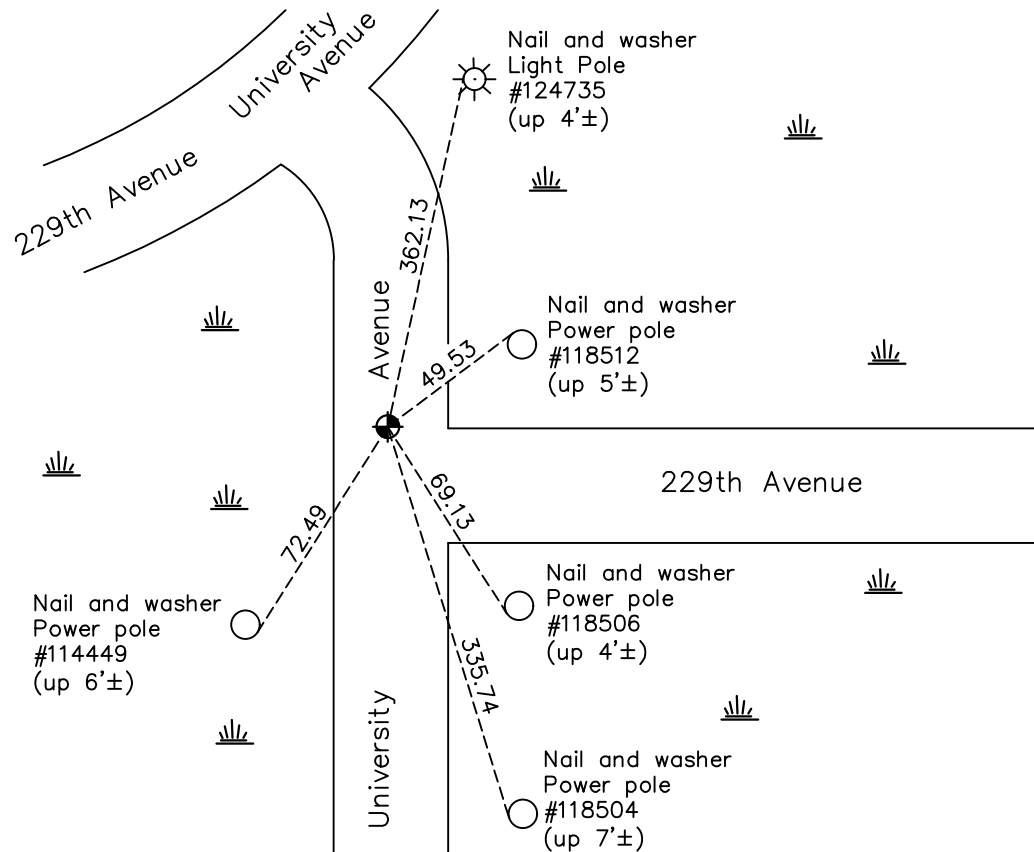
## Northeast Corner of Sec. 1 Township 33 Range 24

On the 7th day of April, 1969, the described corner was evidenced by area resurvey

and to perpetuate the location of said corner, at the exact location thereof, a permanent marker was placed consisting of a cast iron monument

AND on the 18th day of November, 2020, said permanent marker was found flush with the surface and the ties were updated

Updated reference ties are as shown below.



Revision Date

04/05/2021

N.A.D. 1983 Coordinates  
(1996 Adjustment)

County Project Coordinates	
Northing	<u>227444.2341</u>
Easting	<u>500342.5301</u>
Date	<u>2/23/01</u>

I hereby certify that this United States public land survey monument record is correct and complete to the best of my knowledge and belief.

*David M Zieglmeier* Date 7/27/21

David Zieglmeier Anoka County Surveyor  
Minnesota License Number 46179

# HISTORY OF GOVERNMENT CORNER

Page No. 1

County of Anoka

State of Minnesota

## Northeast Corner of Sec. 1 Township 33 Range 24

### **CORNER HISTORY:**

April 7, 1969 - Set cast iron monument down 0.4'± using area resurvey. Established ties to monument.

July 19, 1971 - Found cast iron monument and updated ties.

June 25, 1975 - Found cast iron monument and updated ties.

May 24, 1978 - Found cast iron monument and updated ties.

July 14, 1981 - Found cast iron monument and updated ties.

August 8, 1984 - Found cast iron monument and updated ties.

June 16, 1992 - Found cast iron monument and updated ties.

May 30, 1997 - Found cast iron monument and updated ties.

June 5, 2000 - Found cast iron monument down 3.5'± due to road being raised. Set construction ties and updated corner ties.

August 30, 2005 - Found cast iron monument and updated ties.

February 23, 2001 - Established NAD 1983 (1996 adj.) Anoka County project coordinates by static GPS methods.

July 21, 2011 - Found cast iron monument flush and updated ties.

March 27, 2017 - Found cast iron monument flush. Verified position by VRS GPS methods. Updated ties.

November 18, 2020 - Found cast iron monument flush. Verified position by VRS GPS methods. Updated ties.