

CERTIFICATE OF LOCATION OF GOVERNMENT CORNER

County of Anoka

State of Minnesota

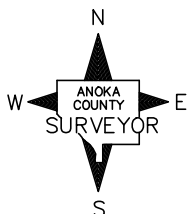
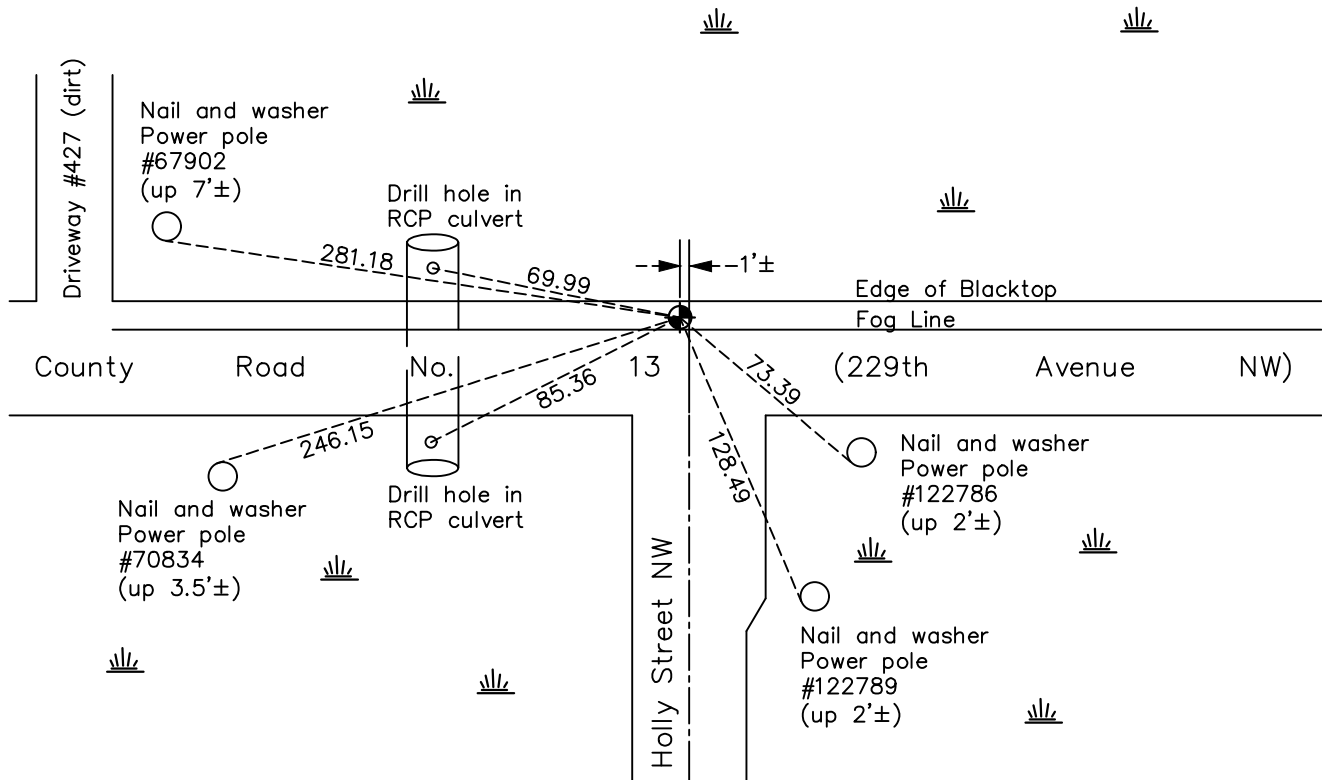
North 1/4 Corner of Sec. 1 Township 33 Range 24

On the 8th day of April, 1969, the described corner was evidenced by area resurvey

and to perpetuate the location of said corner, at the exact location thereof, a permanent marker was placed consisting of a cast iron monument

AND on the 19th day of November, 2020, said permanent marker was found flush to surface and the ties were updated

Updated reference ties are as shown below.



Revision Date

04/08/2021

N.A.D. 1983 Coordinates
(1996 Adjustment)

County Project Coordinates	
Northing	<u>227435.4718</u>
Easting	<u>497707.4677</u>
Date	<u>2/21/01</u>

I hereby certify that this United States public land survey monument record is correct and complete to the best of my knowledge and belief.

David M Zieglmeier Date 7/27/21

David Zieglmeier Anoka County Surveyor
Minnesota License Number 46179

HISTORY OF GOVERNMENT CORNER

Page No. 2

County of Anoka

State of Minnesota

North 1/4 Corner of Sec. 1 Township 33 Range 24

CORNER HISTORY:

April 8, 1969 - Set cast iron monument using area resurvey. Established ties to monument.

July 19, 1971 - Found cast iron monument and updated ties.

June 25, 1975 - Found cast iron monument and updated ties.

June 23, 1978 - Found cast iron monument and updated ties.

July 14, 1981 - Found cast iron monument and updated ties.

August 8, 1984 - Found cast iron monument and updated ties.

July 29, 1987 - Found cast iron monument and updated ties.

June 16, 1992 - Found cast iron monument and updated ties.

May 30, 1997 - Found cast iron monument and updated ties.

February 21, 2001 - Found cast iron monument and updated ties. Established NAD 1983 (1996 adj.) Anoka County project coordinates by static GPS methods.

July 21, 2011 - Found cast iron monument down 0.4'± and updated ties.

May 13, 2013 - Found cast iron monument. Verified position by VRS GPS methods and updated corner ties prior to road construction. Removed monument.

August 20, 2013 - Set cast iron monument after road construction using static GPS methods. Verified position by VRS GPS methods. Updated ties.

March 28, 2017 - Found cast iron monument. Verified position by VRS GPS methods. Updated ties.

November 19, 2020 - Found cast iron monument. Verified position by VRS GPS methods. Updated ties.